

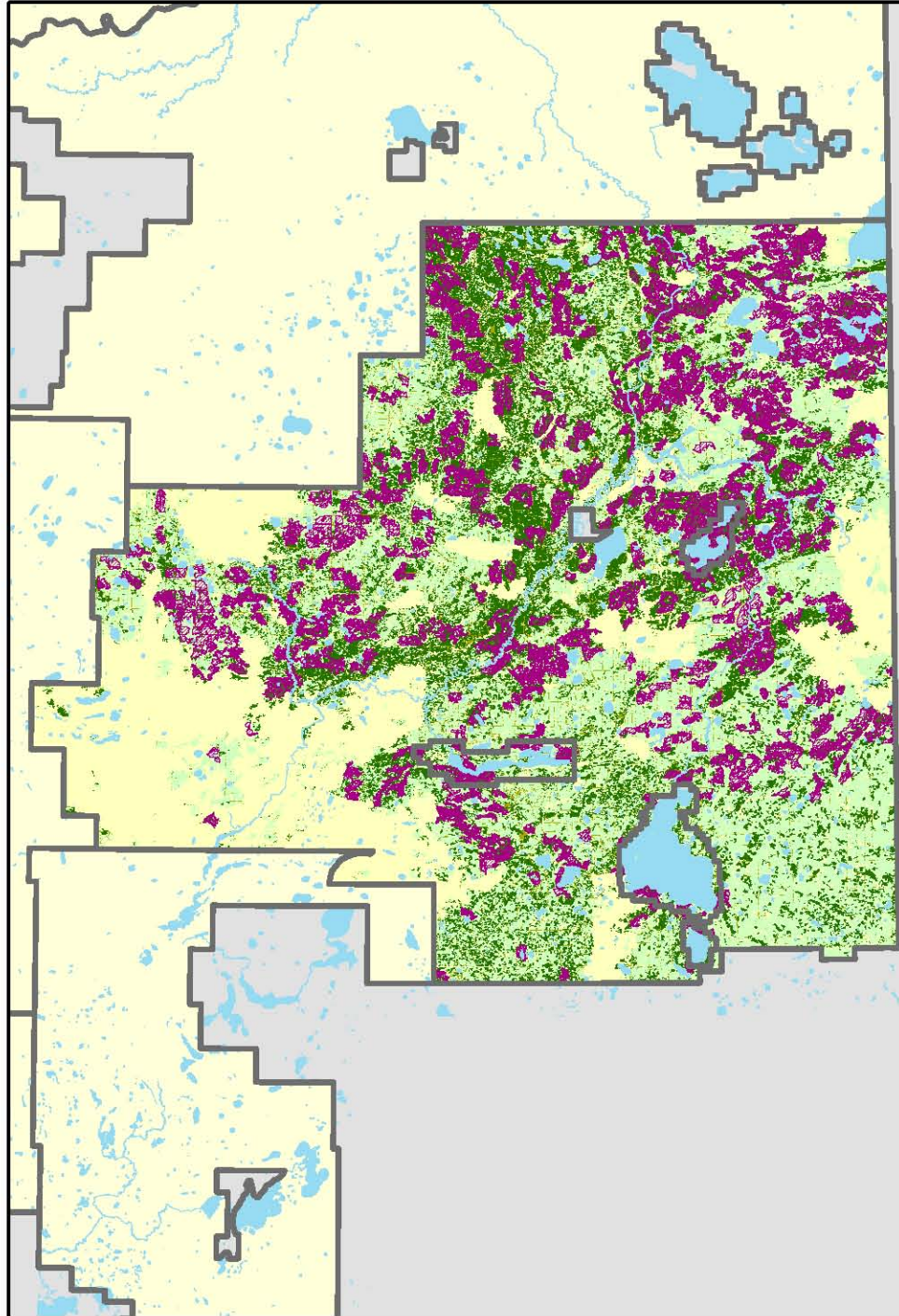
# Old Interior Forest

## FMU L11

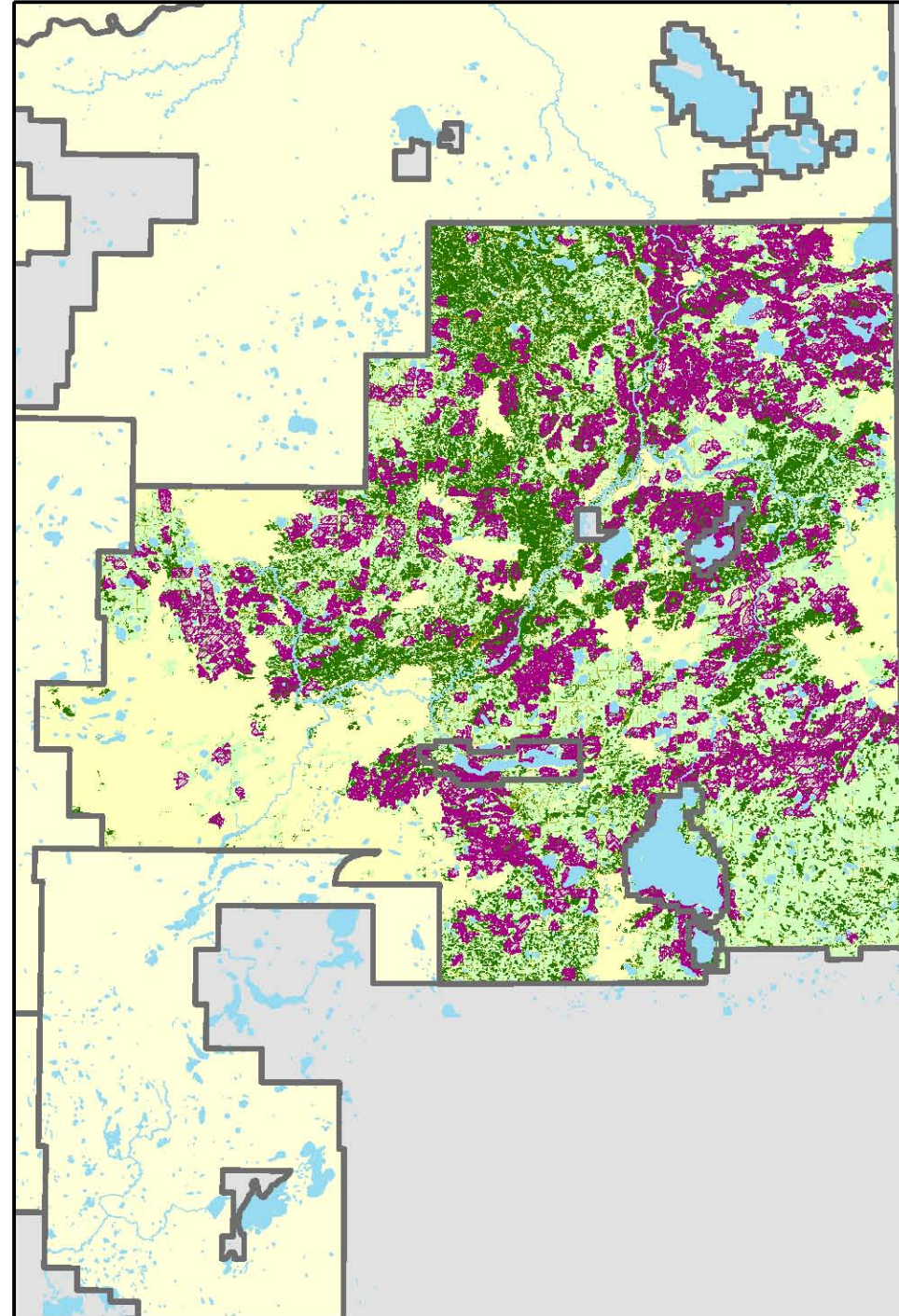
- Interior Core Definition:**
- o Sixty meters or more away from a non-forest edge,
  - o Thirty meters of more away from a non-interior forest edge ("A" density stands, young and immature seral stages),
  - o Greater than thirty percent crown closure (AVI density classes B, C, D),
  - o Greater than two meters in stand height,
  - o Older than established or immature seral stages; and,
  - o At least 100 hectares in size.



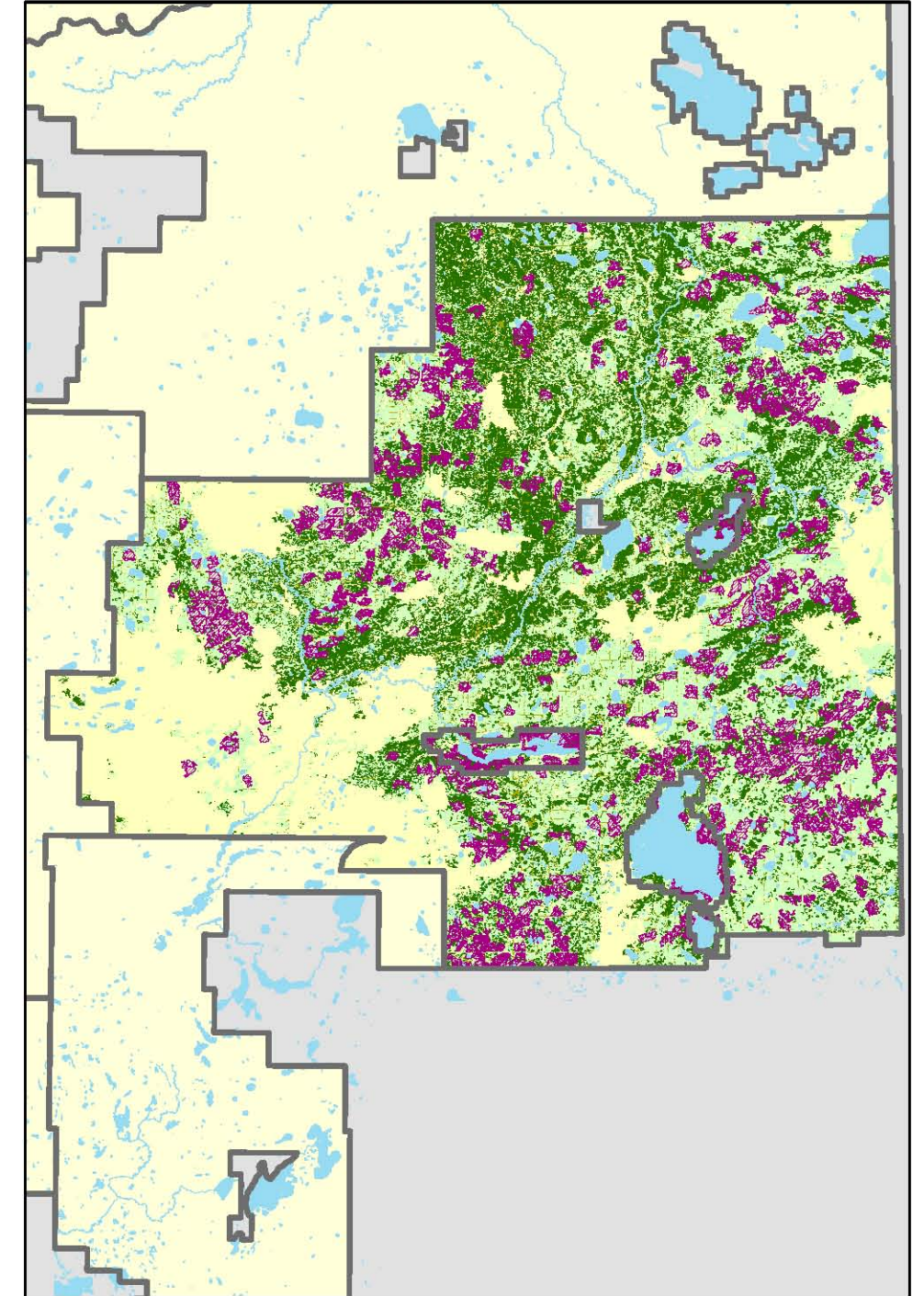
Year 2006



Year 2016



Year 2056



**Interior Core and Net Strata**

 Mature/ Old Interior Core

**Base Information**

 Forest Management Unit

 Lakes/ Rivers

 Non Forested

 Forested, Unmanaged

 Oil and Gas

 Forested, Managed

