



ALBERTA
PACIFIC

FOREST INDUSTRIES INC

Appendix I: Phase 3 Inventory Landbase Determination Process

Table of Contents – Appendix I

1	PHASE 3 INVENTORY LANDBASE DETERMINATION PROCESS	1
1.1	Forest That Prohibits Timber Harvest.....	1
1.2	Inoperable or Isolated Stands	2
1.2.1	Non-Forest Exclusions	2
1.2.2	Subjective Deletions.....	2
1.2.3	Sensitive Slopes.....	3
1.2.4	Isolated Stands.....	3
1.3	Operating Ground Rules	4
1.4	Integration of Recent Landscape Disturbances.....	4
1.4.1	Recent Fire Activity	4
1.4.2	Oil and Gas Activity.....	4
1.4.3	Harvesting Activity	4
1.5	Integration of Landscape Planning Information	5
1.6	Development of the Netdown Database	5
1.6.1	Develop Yield Classes	5
1.6.2	Apply exclusion rules	6
1.6.3	Landbase Assignments	7
1.6.4	Stand Age Assignments	7
1.6.5	Adjust Cut-Block Classification	7
1.6.6	Generate Final Summary of the Netdown	7

List of Tables – Appendix I

Table 1.	Summary of process used to identify areas where timber harvesting is prohibited.	1
Table 2.	Summary of rules for classifying Phase 3 into AVI non-forest classes.	2
Table 3.	Phase 3 definition: Non-commercial coniferous stand densities.	2
Table 4.	Phase 3 definition: Non-commercial deciduous stand densities.	3
Table 5.	Phase 3 definition: Non-commercial species.	3
Table 6.	Phase 3 definition: Non-commercial site index (height-age relationship).	3
Table 7.	Phase 3 definition: Non-commercial timber productivity rating (TPR).	3
Table 8.	Landscape planning information Phase 3 Vs AVI.	5
Table 9.	Summary of Phase 3 exclusions and their relation to AVI exclusions.	6
Table 10.	Rules used to designate landbase.	7
Table 11.	Cutblock classification assignment.	7

Phase 3 Inventory Landbase Determination Process

The most significant limitation associated with the Phase 3 inventory is its non-spatial format, which makes it impossible to perform spatial overlays. However the Phase 3 inventory does include a land status characteristic used to identify land incompatible with timber harvesting (i.e. Parks, Reserves, Private Land, etc.). Where landbase exclusions could not be identified due to information limitations, a percentage reduction was applied. The landbase determination process was completed using database programming (Visual FoxPro™) in the same manner as that applied to AVI data, outlined in Section 1.8 of the main Landbase Determination report.

The following sections describe the general logic and specific assumptions associated with each step as applied to the Phase 3 data. The final netdown summary which incorporated both Phase 3 and AVI information is presented in the main document summary tables.

1.1 Forest That Prohibits Timber Harvest

The AVI process used to identify land incompatible with timber harvesting was accomplished through spatial overlay that geographically linked all exclusion layers to the AVI. This overlay process was not possible when using the aspatial Phase 3, therefore the Phase 3 land status code and appropriate percentage reductions were implemented. Table 1 summarizes the substitutions made to identify areas where harvesting is prohibited.

Table 1. Summary of process used to identify areas where timber harvesting is prohibited.

Exclusion Type	Phase 3 Inventory Approach
Private Land	Land status = "PA"
Protected Notations	Refer to AVI approach (Landbase Determination document)
Parks and Natural Areas	Land Status = "PK" or "RA" or "WA" or "WP"
Aboriginal Reserves	Land Status = "MC" or "IR" or "IL"
Ecological Reserves	Land Status = "ER" or "ES" or "FD" or "FR" or "FW" or "LZ"
River Breaks	No Data Available
PSP Buffers	No Data Available

For parks yet to be updated in the Phase 3 Inventory which included the Birch Mountains and Gipsy Lake Wildland Provincial Parks, a manual identification process was used to extract the Phase 3 township and stand numbers associated with these parks. This list of townships and stand numbers was used to ensure parks were adequately captured in the landbase determination process.

1.2 Inoperable or Isolated Stands

The Phase 3 delineation of inoperable and isolated stands was based on the same four categories utilized for the AVI area:

- Non-Forest Exclusions
- Subjective Deletions
- Sensitive Slopes
- Isolated Stands

The sections below identify how the exclusions were identified within the Phase 3 database.

1.2.1 Non-Forest Exclusions

Non-forested cover group codes in the Phase 3 database were grouped to fit into the AVI non-forest classification. Table 2 presents the relationship between Phase 3 non-forest codes and the AVI classification.

Table 2. Summary of rules for classifying Phase 3 into AVI non-forest classes.

Non-Forest Land Class	Phase 3 Inventory Definition	
	Attribute	Value
Naturally Non-Vegetated	SP1	WA, BS, GL, RB, SA
Anthropogenic Non-Vegetated	SP1	CL
Anthropogenic Vegetated	SP1	CU
Non-Forest Vegetated	SP1	BR, CS, DS, FL, TM, GR, OM
Non-Forested Cutblocks	SP1	CC, SC
Non-Forested Natural Disturbances	SP1	BU, IK, VK, WF

1.2.2 Subjective Deletions

The AVI subjective deletion criteria applied had to be modified slightly to ensure compatibility with the Phase 3 Inventory. Tables 2 through 6 below summarise the Phase 3 definitions representative of the five AVI subjective deletions.

Table 3. Phase 3 definition: Non-commercial coniferous stand densities.

Leading Species	Stand Density Class		Stand Origin (year)	Stand Height (class)
	Overstory	Understory		
P, PL, PJ, SB, SW, FB	A	A or NONE	< 1950	<18

Table 4. Phase 3 definition: Non-commercial deciduous stand densities.

Leading Species	Stand Density Class	
	Overstory	Understory
A, AW, Pb, BW	A	A or NONE

Table 5. Phase 3 definition: Non-commercial species.

Leading Species
S1 = Lt or S2 = Lt or S3 = Lt or S4 = Lt

Table 6. Phase 3 definition: Non-commercial site index (height-age relationship).

Leading Species	Height Class	Origin (year)	Commercialism
Any	0	< 1950	Any
Any	1	< 1930	Any
Any	2	< 1930	U, H

Table 7. Phase 3 definition: Non-commercial timber productivity rating (TPR).

Leading Species	Commercialism	Site
SB,P,PL,PJ	U or H	F

1.2.3 Sensitive Slopes

For the AVI approach a digital elevation model was used to identify slopes greater than 45%. For the Phase 3 approach, slopes greater than 45% were identified through the slope attribute within the Phase 3 Inventory. All Phase 3 stands with a Slope code of 45 (SP = 45) were excluded from the timber harvesting landbase.

1.2.4 Isolated Stands

Isolated stands were not addressed in the Phase 3 landbase determination process due to absence of appropriate data. The decision not to identify isolated stands was also influenced by the fact that the area is only a minor portion of the FMUs, and there is significant access currently in place because of petroleum development activities.

1.3 Operating Ground Rules

The Phase 3 approach addressed watercourse buffers by applying a percentage reduction to the net harvestable landbase. The actual percentage reductions were derived from the Lands and Forest Department LandPro system. The percentage reductions are specific to townships.

1.4 Integration of Recent Landscape Disturbances

The Phase 3 approach developed to address recent landscape disturbances is described in the following sections.

1.4.1 Recent Fire Activity

The Phase 3 approach for addressing recent fires was simply to assume that the inventory includes all recent fire activity.

1.4.2 Oil and Gas Activity

The Phase 3 approach for addressing oil and gas depletions was to apply a percentage reduction to the landbase. The percentage reductions were derived through a thematic overlay of the current oil and gas information on the township grid. The percentage reductions are specific to townships.

Additionally in FMUs A5 and A7 a manual identification process was used to remove the Phase 3 area associated with active and proposed mining sites. This was accomplished by extracting the Phase 3 township and stand numbers associated with these sites. This list of townships and stand numbers were used to ensure active and proposed mining sites were adequately captured in the landbase determination process.

1.4.3 Harvesting Activity

The Phase 3 approach for addressing recent harvesting was to assume that the inventory accounts for all recent harvesting activity.

1.5 Integration of Landscape Planning Information

The Phase 3 approach for integrating additional landscape planning information was limited to the information available in Phase 3 Inventory database. Table 8 below identifies how the AVI planning layers were addressed in the Phase 3 process.

Table 8. Landscape planning information Phase 3 Vs AVI.

FMA Planning Information	Phase 3 Approach
FMA / FMU / Operating Compartment	FMA & FMU were derived from inventory characteristics ([F], [MU] and [MGR]). Operating Units is not applicable.
Natural Sub Region	No Data Available
Maintain Our Forest Blocks	Since all Phase 3 area is Non-J area it wasn't necessary to identify these MOF blocks.
Grazing Leases	Since all Phase 3 area is Non-J area it wasn't necessary to identify these grazing leases.
Planned Harvest Blocks / Areas (2001+)	Since Non-J analysis is non-spatial it wasn't necessary to integrate planned blocks.
Summer Ground Classification	No Data Available
Caribou Zones and Ungulate Winter Zones	No Data Available
Alberta-Pacific Planning Units	No Data Available

1.6 Development of the Netdown Database

Developing the final netdown database involved stratifying the land base for timber supply modeling. The steps are outlined below:

- Develop Yield Classes
- Apply Exclusion Rules
- Landbase Assignments
- Stand Age Assignments
- Adjust Cut-Block Classification
- Generate Final Summary of the Netdown

The following sections describe the assumptions associated with each step.

1.6.1 Develop Yield Classes

Developing yield classes for the Phase 3 landbase was similar to the process outlined in the landbase determination document. The major modifications were:

- Overstory and understory cover group did not have to be calculated because this characteristic is already a part of the Phase 3 Inventory.
- For the yield class stratification rules Phase 3 [site] characteristic replaced the AVI [TPR] characteristic.
- The non-forest classification rules had to be modified to fit Phase 3 Inventory characteristics. Table 2 (above – page 2) summarizes the rules used to identify AVI non-forest classes within the Phase 3 Inventory.

1.6.2 Apply exclusion rules

Phase 3 exclusions were structured to mimic the AVI thematic exclusions. The AVI used three themes to track exclusions. Table 9 summarizes how Phase 3 exclusions were fit to the AVI exclusion themes.

Table 9. Summary of Phase 3 exclusions and their relation to AVI exclusions.

AVI Exclusion Theme	Phase 3 Inventory Exclusions		
	Stand Level Exclusion	Percentage Reduction	No Data Available
<i>Prohibit Timber Harvesting</i>	<ul style="list-style-type: none"> • Parks and Natural Areas • Aboriginal Reserves • Ecological Reserves • Protective Notations • Private Land • PSP Buffers • River Breaks (Decid Only) 		<ul style="list-style-type: none"> • Athabasca and Clearwater River Breaks
<i>Inoperable or Isolated Areas / Recently Disturbed Areas</i>	<ul style="list-style-type: none"> • Steep Slopes • Non-Forested Cutblocks • Non-Forested Natural Disturbances • Isolated Stands • Non-Forest Vegetated • Anthropogenic Vegetated • Anthropogenic Non-Vegetated • Naturally Non-Vegetated • Non-Commercial Site Index • Non-Commercial Density • Non-Commercial Species • Non-Commercial TPR 	<ul style="list-style-type: none"> • Recent Oil & Gas Activity 	<ul style="list-style-type: none"> • Recently Burned Area
<i>Operating Ground Rules</i>		<ul style="list-style-type: none"> • Watercourse Buffers 	

As with the AVI process, exclusions were ordered in a hierarchical list to facilitate assignments and netdown summaries. The Phase 3 approach was based on the same hierarchy reported in main landbase determination document.

1.6.3 Landbase Assignments

The Phase 3 approach for identifying landbase was similar to the AVI approach. Table 10 below summarizes the landbase assignment rules used in the Phase 3 netdown process.

Table 10. Rules used to designate landbase.

Landbase	Broad Cover Group
Coniferous	- C, CD, DC, DU
Deciduous	- D

1.6.4 Stand Age Assignments

Stand ages were derived using the stand origin field in the Phase 3 Inventory. The assignment rules were the same as presented in the landbase determination document. Timber modeling started in the year 2001 making the current age equal to 2001 minus year of origin.

1.6.5 Adjust Cut-Block Classification

The Phase 3 approach for cutblock assignments was developed to be consistent with the AVI approach. However due to information limitations, the process was simple when compared to the AVI process. The Phase 3 approach for assigning a yield class, age and landbase to every cut-block in the inventory is presented in Table 11.

Table 11. Cutblock classification assignment.

Phase 3 Inventory Characteristics		Cutblock Assignment
[S1]	[ORGN]	
“CC” or “SC”	< 1991	Non-Forested Cutblock. Will not be considered harvestable until a valid regeneration survey indicates a free to grow forest.
“CC” or “SC”	>= 1991	Yield class: Sw-Closed Canopy – Medium Site Age: 5-Year Regeneration Lag Landbase: Conifer Landbase

1.6.6 Generate Final Summary of the Netdown

As with the AVI approach, once all exclusions were identified and stratification was complete a netdown summary was prepared, and is included in the main document.



**ALBERTA
PACIFIC**

FOREST INDUSTRIES INC

Appendix II : Landbase Summary Maps and Tables by Timber Zone

Alberta-Pacific FMU S7

Netdown Classification

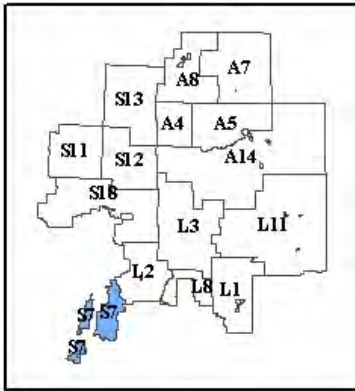


ALBERTA-PACIFIC
FOREST INDUSTRIES INC.

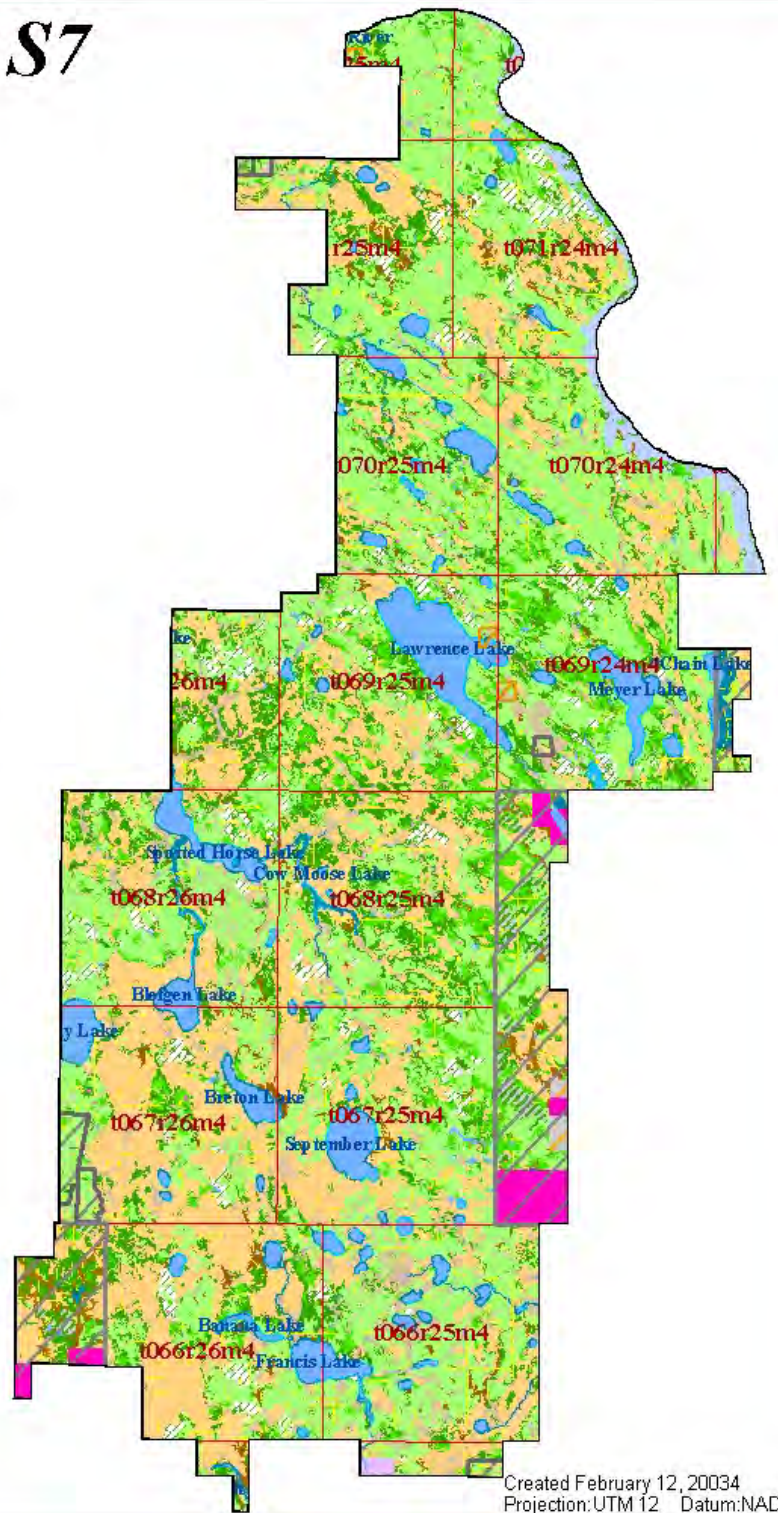
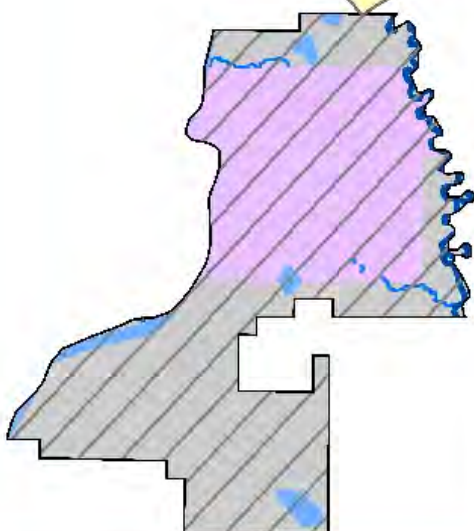


This unit was burnt in the 2001 Chisholm fire and was therefore excluded from the analysis.

Reference Map



Preliminary analysis of this unit showed only limited and scattered timber and it was therefore excluded from the analysis.



Created February 12, 20034
Projection: UTM 12 Datum: NAD27

Legend

Prohibits Timber Harvesting

- Provincial Park
- Aboriginal Reserve
- Ecological Reserve
- Protective Notations
- PSP Buffers
- River Breaks (Deciduous Only)
- Private Land Reduction

Recently Disturbed Areas

- Recent Fires
- Oil and Gas

Inoperable / Isolated Stands

- Slopes > 45%
- Isolated Stands
- Non-Forested Pre-91 Cutblocks
- Non-Forested Natural Disturbance Areas
- Non-Forested Stand Area
- Non-Commercial Stand Area

Aquatic Features & Water Course Buffers

- Rivers, Lakes, Flooded Areas
- Water Course Buffer Productive
- Water Course Buffer Non-Productive

Timber Harvesting Landbase

- Harvestable Deciduous
- Harvestable Mixedwood
- Harvestable Coniferous
- Harvestable Deciduous with Coniferous Understory

Land Tenure Status

- Non-J Area
- Aboriginal Reserves

Embedded Non-J Land Classification

- Grazing Leases
- Maintain Our Forest Blocks

Alberta-Pacific FMA Area Landbase Summary Table

Timber Zone 1 - FMU S7

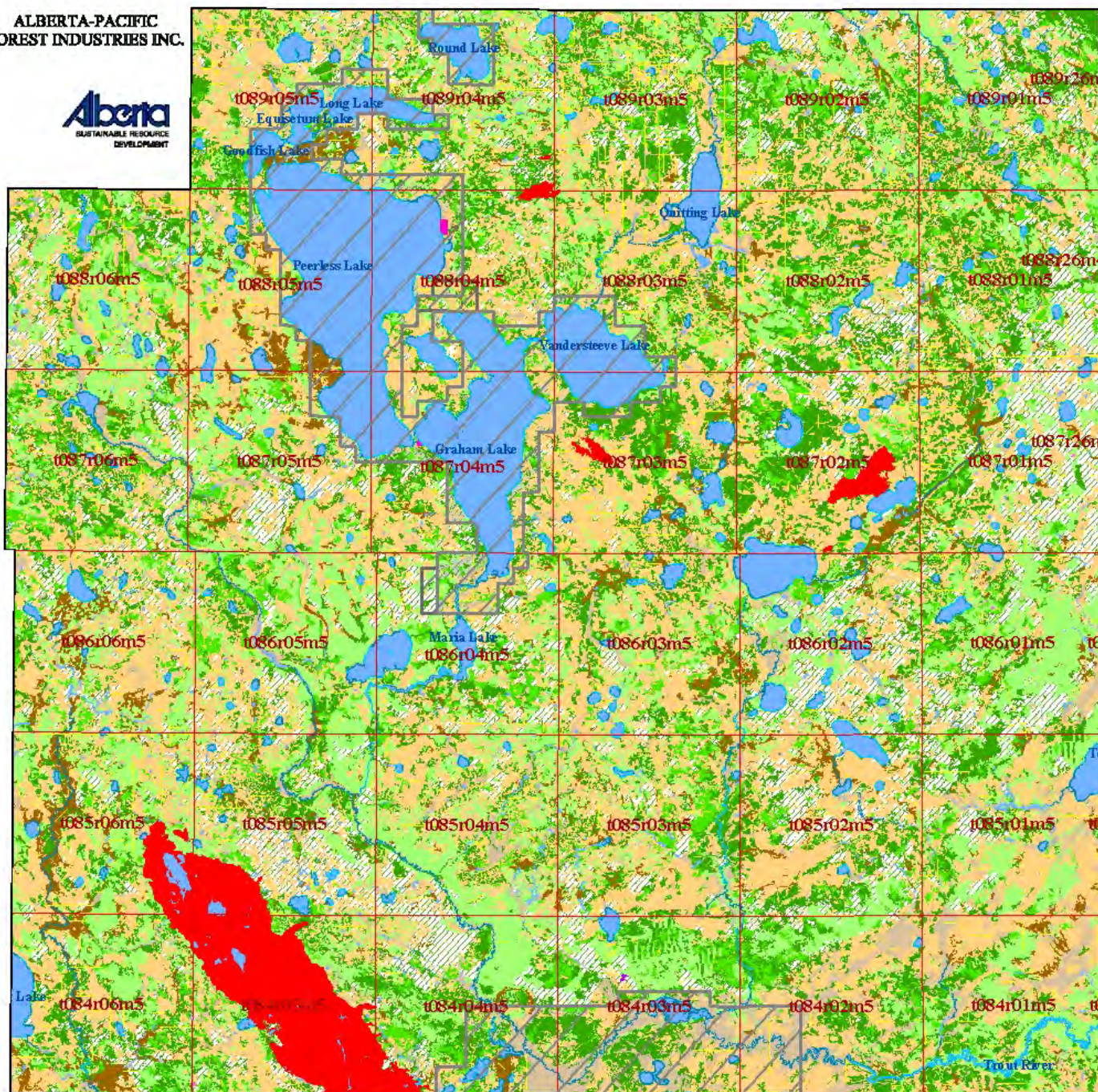


		Forest Management Unit S7			
Table Index	Netdown Category	FMA Area(ha)	Non-FMA Area(ha)	Total Area(ha)	Landbase (%)
1 Prohibits/Precludes Timber Harvesting					
1.a	Provincial Park	113.6	0.0	113.6	0.1%
1.b	Aboriginal Reserve	0.0	0.0	0.0	0.0%
1.c	Ecological Reserve	0.0	0.0	0.0	0.0%
1.d	Protected Notations (No Harvesting Permitted)	0.0	1,264.6	1,264.6	1.0%
1.e	PSP Buffers	47.6	10.0	57.6	0.0%
1.f	River Breaks	1,361.6	0.0	1,361.6	1.1%
1.g	Private Land	102.5	187.0	289.5	0.2%
	<i>Sub-total</i>	1,625.4	1,461.6	3,087.0	2.5%
2 Recently Disturbed Areas					
2.a	Fire	0.0	0.0	0.0	0.0%
2.b	Oil and Gas	3,015.0	396.8	3,411.8	2.8%
	<i>Sub-total</i>	3,015.0	396.8	3,411.8	2.8%
3 Inoperable / Isolated Stands					
3.a	Slope	0.0	0.0	0.0	0.0%
3.b	Isolated Harvestable stands	56.9	0.7	57.6	0.0%
3.c	Non-Forested (CC)	1.3	0.0	1.3	0.0%
3.d	Non-Forested Natural Disturbance	1,743.1	3.3	1,746.4	1.4%
3.e	Non-Forested Vegetated	6,719.6	700.9	7,420.5	6.1%
3.f	Anthropogenic Vegetated	323.5	72.1	395.6	0.3%
3.g	Anthropogenic Non-Vegetated	389.7	38.3	428.1	0.4%
3.h	Naturally Non-Vegetated	0.7	3.6	4.3	0.0%
3.i	Non-Commercial TPR	2,600.3	682.9	3,283.2	2.7%
3.j	Non-Commercial Species	14,311.7	695.6	15,007.3	12.3%
3.k	Non-Commercial Stand Density	651.6	222.5	874.1	0.7%
3.l	Non-Commercial Site Index	10,579.5	239.6	10,819.1	8.9%
3.m	Horizontal Stand Adjustment	5.0	514.5	519.5	0.4%
	<i>Sub-total</i>	37,382.9	3,174.1	40,557.0	33.2%
4 Water Course Buffers					
4.a	Buffer	3,595.2	238.0	3,833.2	3.1%
	<i>Sub-total</i>	3,595.2	238.0	3,833.2	3.1%
5 Aquatic Features					
5.a	Rivers	10.7	0.0	10.7	0.0%
5.b	Lakes	6,055.8	165.0	6,220.8	5.1%
5.c	Flooded Areas	425.3	17.8	443.1	0.4%
	<i>Sub-total</i>	6,491.8	182.8	6,674.6	5.5%
6 Timber Harvesting Landbase					
6.a	Deciduous	41,550.1	2,800.0	44,350.1	36.3%
6.b	Deciduous / Coniferous	3,109.5	288.9	3,398.4	2.8%
6.c	Coniferous / Deciduous	3,271.7	692.0	3,963.8	3.2%
6.d	Coniferous	11,914.2	831.4	12,745.6	0.1%
	<i>Sub-total</i>	59,845.6	4,612.3	64,457.9	52.8%
Grand Total		111,955.8	10,065.5	122,021.4	100.0%



Alberta-Pacific FMU S11

Netdown Classification

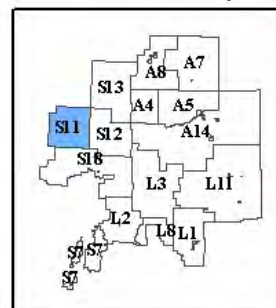


Legend

Prohibits Timber Harvesting	Recently Disturbed Areas	Aquatic Features & Water Course Buffers
Provincial Park	Recent Fires	Rivers, Lakes, Flooded Areas
Aboriginal Reserve	Oil and Gas	Water Course Buffer Productive
Ecological Reserve	Inoperable / Isolated Stands	Water Course Buffer Non-Productive
Protective Notations	Slopes > 45%	Timber Harvesting Landbase
PSP Buffers	Isolated Stands	Harvestable Deciduous
River Breaks (Deciduous Only)	Non-Forested Pre-91 Cutblocks	Harvestable Mixedwood
Private Land Reduction	Non-Forested Natural Disturbance Areas	Harvestable Coniferous
	Non-Forested Stand Area	Harvestable Deciduous with Coniferous Understorey
	Non-Commercial Stand Area	

Land Tenure Status	Embedded Non-J Land Classification
Non-J Area	Grazing Leases
Aboriginal Reserves	Maintain Our Forest Blocks

Reference Map



1:350,000



Created February 11, 2004
Projection: UTM 12 Datum: NAD27

Alberta-Pacific FMA Area Landbase Summary Table

Timber Zone 9 - FMU S11



		Forest Management Unit S11			
Table Index	Netdown Category	FMA Area(ha)	Non-FMA Area(ha)	Total Area(ha)	Landbase (%)
1 Prohibits/Precludes Timber Harvesting					
1.a	Provincial Park	0.0	0.0	0.0	0.0%
1.b	Aboriginal Reserve	0.0	0.0	0.0	0.0%
1.c	Ecological Reserve	0.0	0.0	0.0	0.0%
1.d	Protected Notations (No Harvesting Permitted)	0.0	40.2	40.2	0.0%
1.e	PSP Buffers	51.4	2.2	53.6	0.0%
1.f	River Breaks	0.0	0.0	0.0	0.0%
1.g	Private Land	0.0	0.0	0.0	0.0%
	<i>Sub-total</i>	<i>51.4</i>	<i>42.4</i>	<i>93.8</i>	<i>0.0%</i>
2 Recently Disturbed Areas					
2.a	Fire	8,202.2	0.8	8,203.0	2.5%
2.b	Oil and Gas	6,948.3	304.0	7,252.3	2.2%
	<i>Sub-total</i>	<i>15,150.5</i>	<i>304.8</i>	<i>15,455.3</i>	<i>4.6%</i>
3 Inoperable / Isolated Stands					
3.a	Slope	0.0	0.0	0.0	0.0%
3.b	Isolated Harvestable stands	113.5	14.1	127.6	0.0%
3.c	Non-Forested (CC)	13.8	0.0	13.8	0.0%
3.d	Non-Forested Natural Disturbance	9,669.6	745.7	10,415.3	3.1%
3.e	Non-Forested Vegetated	11,662.5	2,940.7	14,603.2	4.4%
3.f	Anthropogenic Vegetated	66.0	8.5	74.5	0.0%
3.g	Anthropogenic Non-Vegetated	757.7	214.3	972.0	0.3%
3.h	Naturally Non-Vegetated	0.0	0.0	0.0	0.0%
3.i	Non-Commercial TPR	5,530.0	182.9	5,712.8	1.7%
3.j	Non-Commercial Species	20,491.9	1,496.8	21,988.7	6.6%
3.k	Non-Commercial Stand Density	7,605.4	902.3	8,507.7	2.6%
3.l	Non-Commercial Site Index	59,135.0	3,225.8	62,360.7	18.8%
3.m	Horizontal Stand Adjustment	2.6	3.6	6.2	0.0%
	<i>Sub-total</i>	<i>115,047.8</i>	<i>9,734.7</i>	<i>124,782.5</i>	<i>37.5%</i>
4 Water Course Buffers					
4.a	Buffer	7,174.3	2,405.3	9,579.5	2.9%
	<i>Sub-total</i>	<i>7,174.3</i>	<i>2,405.3</i>	<i>9,579.5</i>	<i>2.9%</i>
5 Aquatic Features					
5.a	Rivers	137.9	15.6	153.4	0.0%
5.b	Lakes	8,885.1	16,360.8	25,245.9	7.6%
5.c	Flooded Areas	1,713.0	9.6	1,722.6	0.5%
	<i>Sub-total</i>	<i>10,735.9</i>	<i>16,386.0</i>	<i>27,121.9</i>	<i>8.2%</i>
6 Timber Harvesting Landbase					
6.a	Deciduous	81,428.1	2,913.2	84,341.3	25.4%
6.b	Deciduous / Coniferous	9,639.3	423.7	10,062.9	3.0%
6.c	Coniferous / Deciduous	8,288.8	425.4	8,714.2	2.6%
6.d	Coniferous	48,815.0	3,581.6	52,396.6	15.8%
	<i>Sub-total</i>	<i>148,171.1</i>	<i>7,343.9</i>	<i>155,515.0</i>	<i>46.8%</i>
Grand Total		296,331.1	36,217.0	332,548.1	100.0%

Alberta-Pacific FMA Area Landbase Summary Table

Timber Zone 7 - FMU S18



		Forest Management Unit S18			
Table Index	Netdown Category	FMA Area(ha)	*Non-FMA Area(ha)	Total Area(ha)	Landbase (%)
1 Prohibits/Precludes Timber Harvesting					
1.a	Provincial Park	0.0	42.5	42.5	0.0%
1.b	Aboriginal Reserve	0.0	10,907.7	10,907.7	1.8%
1.c	Ecological Reserve	0.0	0.0	0.0	0.0%
1.d	Protected Notations (No Harvesting Permitted)	185.6	0.0	185.6	0.0%
1.e	PSP Buffers	94.9	0.0	94.9	0.0%
1.f	River Breaks	0.0	0.0	0.0	0.0%
1.g	Private Land	57.3	176.9	234.2	0.0%
	<i>Sub-total</i>	<i>337.8</i>	<i>11,127.1</i>	<i>11,464.9</i>	<i>1.9%</i>
2 Recently Disturbed Areas					
2.a	Fire	3,131.9	127.9	3,259.8	0.5%
2.b	Oil and Gas	6,581.8	1,625.8	8,207.6	1.4%
	<i>Sub-total</i>	<i>9,713.7</i>	<i>1,753.7</i>	<i>11,467.4</i>	<i>1.9%</i>
3 Inoperable / Isolated Stands					
3.a	Slope	0.0	0.0	0.0	0.0%
3.b	Isolated Harvestable stands	118.8	181.4	300.2	0.0%
3.c	Non-Forested (CC)	911.6	303.9	1,215.5	0.2%
3.d	Non-Forested Natural Disturbance	12,037.0	4,201.5	16,238.6	2.7%
3.e	Non-Forested Vegetated	26,096.1	23,058.3	49,154.4	8.2%
3.f	Anthropogenic Vegetated	280.5	203.4	483.9	0.1%
3.g	Anthropogenic Non-Vegetated	1,035.2	1,622.4	2,657.6	0.4%
3.h	Naturally Non-Vegetated	0.0	3.2	3.2	0.0%
3.i	Non-Commercial TPR	16,961.4	24,562.9	41,524.3	6.9%
3.j	Non-Commercial Species	36,962.5	20,186.8	57,149.3	9.5%
3.k	Non-Commercial Stand Density	1,282.1	1,427.3	2,709.4	0.4%
3.l	Non-Commercial Site Index	91,487.3	37,056.6	128,543.8	21.3%
3.m	Horizontal Stand Adjustment	1,302.4	16.2	1,318.6	0.2%
	<i>Sub-total</i>	<i>188,474.9</i>	<i>112,823.8</i>	<i>301,298.7</i>	<i>50.0%</i>
4 Water Course Buffers					
4.a	Buffer	13,178.9	3,804.0	16,982.9	2.8%
	<i>Sub-total</i>	<i>13,178.9</i>	<i>3,804.0</i>	<i>16,982.9</i>	<i>2.8%</i>
5 Aquatic Features					
5.a	Rivers	487.7	0.0	487.7	0.1%
5.b	Lakes	21,239.0	19,923.6	41,162.7	6.8%
5.c	Flooded Areas	3,069.6	207.4	3,277.1	0.5%
	<i>Sub-total</i>	<i>24,796.4</i>	<i>20,131.1</i>	<i>44,927.5</i>	<i>7.5%</i>
6 Timber Harvesting Landbase					
6.a	Deciduous	112,272.9	10,391.3	122,664.2	20.4%
6.b	Deciduous / Coniferous	14,911.6	2,329.0	17,240.6	2.9%
6.c	Coniferous / Deciduous	18,425.5	3,397.2	21,822.8	3.6%
6.d	Coniferous	48,845.4	5,747.5	54,592.9	9.1%
	<i>Sub-total</i>	<i>194,455.4</i>	<i>21,865.0</i>	<i>216,320.5</i>	<i>35.9%</i>
Grand Total		430,957.0	171,504.8	602,461.8	100.0%

* Non FMA Area consists of a combination of Phase 3 and AVI data.



Alberta-Pacific FMU S22

Netdown Classification

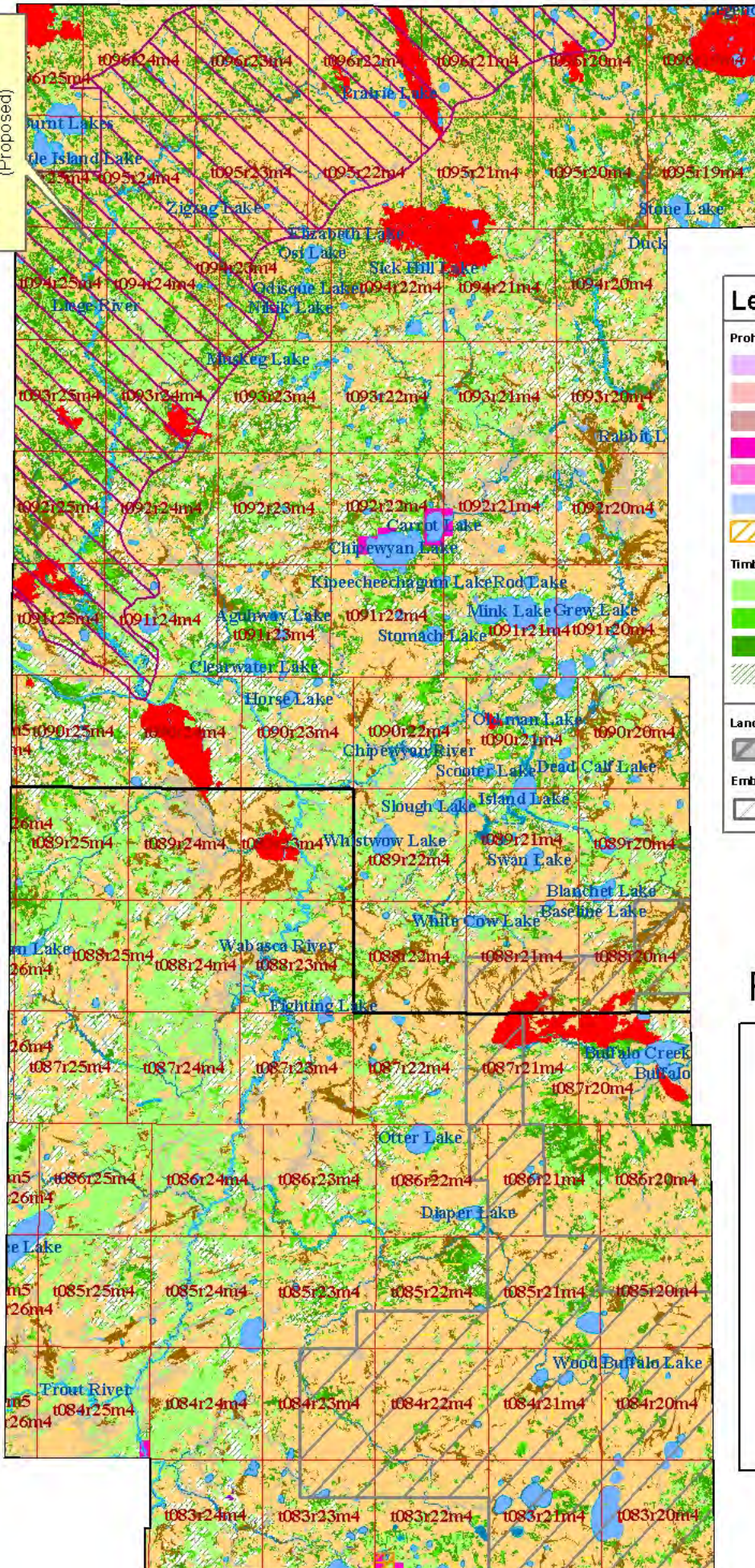


ALBERTA-PACIFIC
FOREST INDUSTRIES INC.



Vanderwell
Contractors (1971) Ltd.

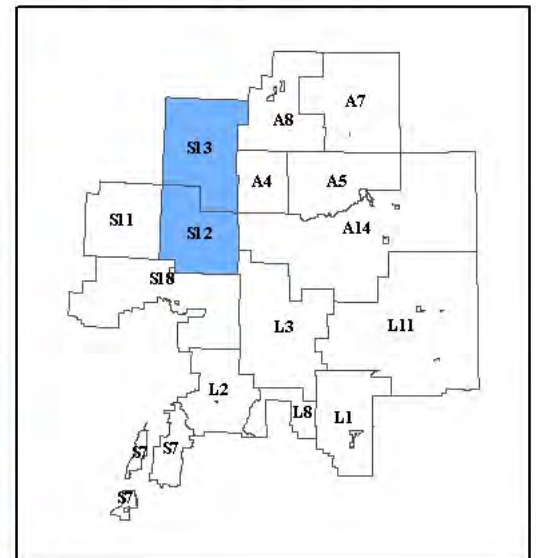
Liege River Protected Area (Proposed)



Legend

Prohibits Timber Harvesting		Recently Disturbed Areas	
Provincial Park	Recent Fires	Oil and Gas	
Aboriginal Reserve	Slopes > 45%		
Ecological Reserve	Isolated Stands		
Protective Notations	Non-Forest Pre-91 Cutblocks		
PSP Buffers	Non-Forest Natural Disturbance Areas		
River Breaks (Deciduous Only)	Non-Forest Stand Area		
Private Land Reduction	Non-Commercial Stand Area		
Timber Harvesting Landbase		Aquatic Features & Water Course Buffers	
Harvestable Deciduous	Rivers, Lakes, Flooded Areas		
Harvestable Mixedwood	Water Course Buffer Productive		
Harvestable Coniferous	Water Course Buffer Non-Productive		
Harvestable Deciduous with Coniferous Understorey			
Land Tenure Status			
Non-J Area	Aboriginal Reserves		
Embedded Non-J Land Classification			
Grazing Leases	Maintain Our Forest Blocks		

Reference Map



1:550,000

Created February 11, 2004
Projection: UTM 12 Datum: NAD27



Alberta-Pacific FMA Area Landbase Summary Table

Timber Zone 10 - FMUs S22



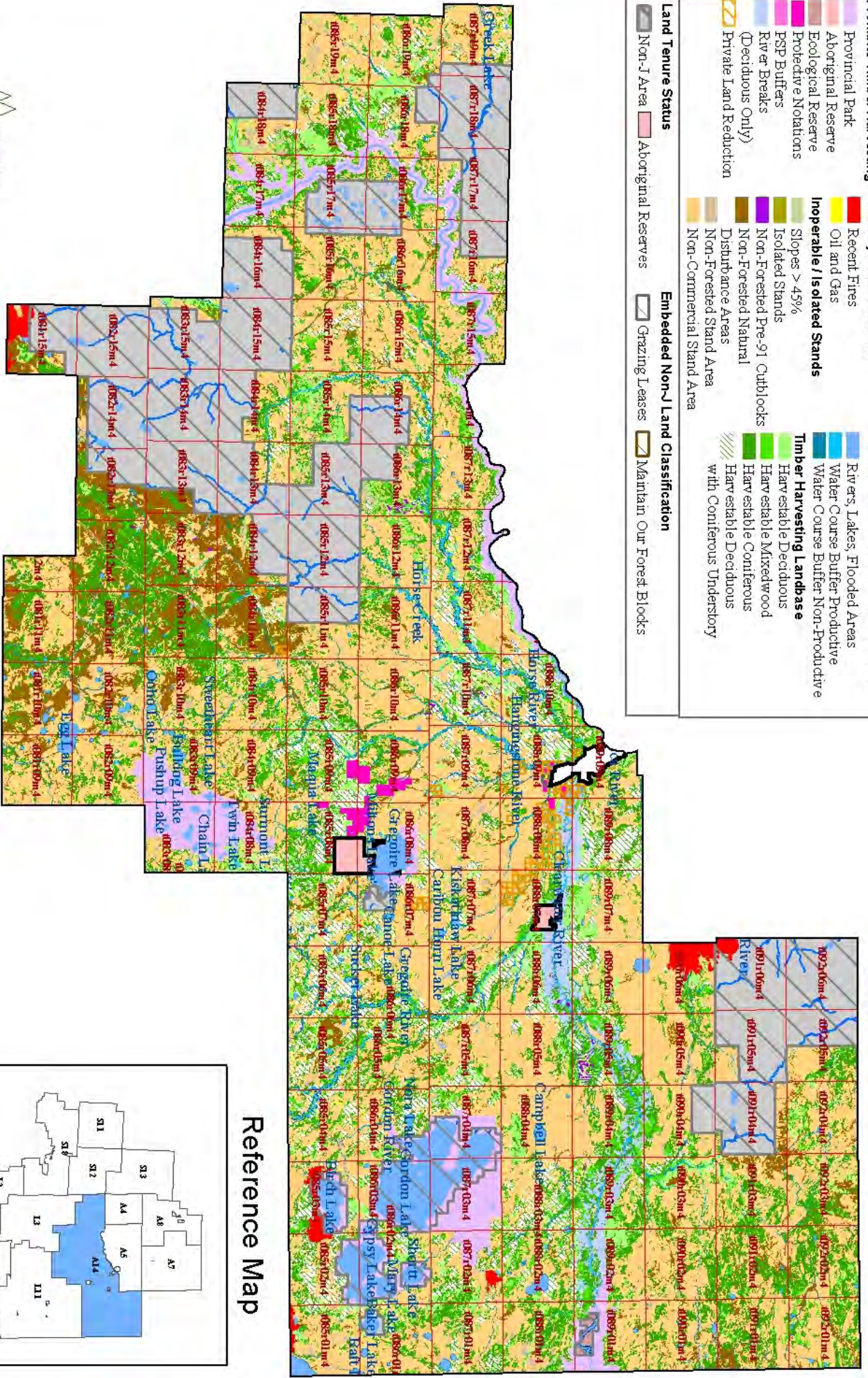
		Forest Management Unit S22			
Table Index	Netdown Category	FMA Area(ha)	Non-FMA Area(ha)	Total Area(ha)	Landbase (%)
1 Prohibits/Precludes Timber Harvesting					
1.a	Provincial Park	0.0	0.0	0.0	0.0%
1.b	Aboriginal Reserve	0.0	0.0	0.0	0.0%
1.c	Ecological Reserve	0.0	0.0	0.0	0.0%
1.d	Protected Notations (No Harvesting Permitted)	806.1	0.0	806.1	0.1%
1.e	PSP Buffers	35.7	0.0	35.7	0.0%
1.f	River Breaks	0.0	0.0	0.0	0.0%
1.g	Private Land	2.7	0.0	2.7	0.0%
	<i>Sub-total</i>	844.5	0.0	844.5	0.1%
2 Recently Disturbed Areas					
2.a	Fire	18,074.3	1,307.5	19,381.8	2.4%
2.b	Oil and Gas	7,959.3	1,168.2	9,127.6	1.1%
	<i>Sub-total</i>	26,033.6	2,475.8	28,509.3	3.5%
3 Inoperable / Isolated Stands					
3.a	Slope	0.0	0.0	0.0	0.0%
3.b	Isolated Harvestable stands	416.4	163.2	579.6	0.1%
3.c	Non-Forested (CC)	39.8	0.0	39.8	0.0%
3.d	Non-Forested Natural Disturbance	32,474.1	6,195.7	38,669.8	4.8%
3.e	Non-Forested Vegetated	36,378.6	1,835.4	38,214.0	4.8%
3.f	Anthropogenic Vegetated	701.6	154.1	855.8	0.1%
3.g	Anthropogenic Non-Vegetated	571.1	3.7	574.8	0.1%
3.h	Naturally Non-Vegetated	19.1	0.0	19.1	0.0%
3.i	Non-Commercial TPR	123,740.3	13,617.4	137,357.7	17.1%
3.j	Non-Commercial Species	41,076.9	22,290.9	63,367.8	7.9%
3.k	Non-Commercial Stand Density	16,499.6	714.9	17,214.6	2.1%
3.l	Non-Commercial Site Index	103,356.2	36,921.3	140,277.5	17.5%
3.m	Horizontal Stand Adjustment	36.0	51.9	88.0	0.0%
	<i>Sub-total</i>	355,309.9	81,948.6	437,258.5	54.4%
4 Water Course Buffers					
4.a	Buffer	19,000.0	1,635.9	20,635.9	2.6%
	<i>Sub-total</i>	19,000.0	1,635.9	20,635.9	2.6%
5 Aquatic Features					
5.a	Rivers	1,661.7	6.9	1,668.6	0.2%
5.b	Lakes	15,788.1	2,830.8	18,618.9	2.3%
5.c	Flooded Areas	3,576.5	71.9	3,648.4	0.5%
	<i>Sub-total</i>	21,026.3	2,909.6	23,935.9	3.0%
6 Timber Harvesting Landbase					
6.a	Deciduous	182,494.4	2,841.6	185,336.0	23.1%
6.b	Deciduous / Coniferous	13,250.1	859.5	14,109.6	1.8%
6.c	Coniferous / Deciduous	10,506.9	728.0	11,234.9	1.4%
6.d	Coniferous	76,556.2	5,127.3	81,683.5	10.2%
	<i>Sub-total</i>	282,807.5	9,556.5	292,364.0	36.4%
Grand Total		705,021.7	98,526.3	803,548.0	100.0%

Alberta-Pacific FMU A14

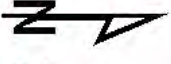
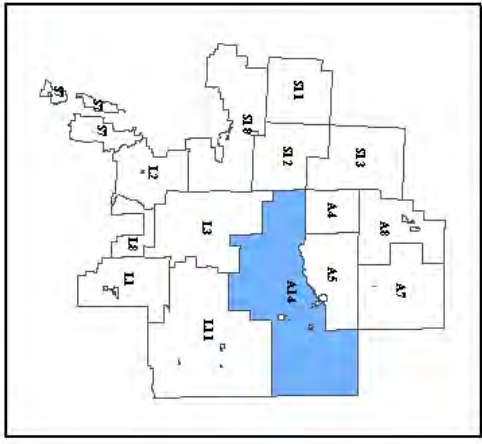
Nedown Classification



Legend	
Prohibits Timber Harvesting	Recently Disturbed Areas
<ul style="list-style-type: none"> Provincial Park Aboriginal Reserve Ecological Reserve Protective Notations PSP Buffers River Breaks (Deciduous Only) Private Land Reduction 	<ul style="list-style-type: none"> Recent Fires Oil and Gas
Land Tenure Status	Aquatic Features & Water Course Buffers
<ul style="list-style-type: none"> Non-J Area Aboriginal Reserves 	<ul style="list-style-type: none"> Rivers, Lakes, Flooded Areas Water Course Buffer Productive Water Course Buffer Non-Productive
Embedded Non-J Land Classification	Timber Harvesting Landbase
<ul style="list-style-type: none"> Grazing Leases Maintain Our Forest Blocks 	<ul style="list-style-type: none"> Inoperable / Isolated Stands Slopes > 45% Isolated Stands Non-Forest Pre-91 Cutblocks Non-Forest Natural Disturbance Areas Non-Commercial Stand Area
	<ul style="list-style-type: none"> Timber Harvesting Landbase Harvestable Deciduous Harvestable Mixedwood Harvestable Coniferous Harvestable Deciduous with Coniferous Understorey



Reference Map



1:750,000

Created February 9 2004
Projection: UTM 12 Datum: NAD27



Alberta-Pacific FMA Area Landbase Summary Table

Timber Zone 8 - FMU A14



		Forest Management Unit A14			
Table Index	Netdown Category	FMA Area(ha)	*Non-FMA Area(ha)	Total Area(ha)	Landbase (%)
1 Prohibits/Precludes Timber Harvesting					
1.a	Provincial Park	41,968.5	7,840.9	49,809.4	4.2%
1.b	Aboriginal Reserve	63.5	0.0	63.5	0.0%
1.c	Ecological Reserve	0.0	889.1	889.1	0.1%
1.d	Protected Notations (No Harvesting Permitted)	3,418.7	54.4	3,473.2	0.3%
1.e	PSP Buffers	44.9	0.0	44.9	0.0%
1.f	River Breaks	14,555.0	0.0	14,555.0	1.2%
1.g	Private Land	1,697.8	7.3	1,705.0	0.1%
	<i>Sub-total</i>	61,748.5	8,791.7	70,540.2	6.0%
2 Recently Disturbed Areas					
2.a	Fire	5,860.2	0.0	5,860.2	0.5%
2.b	Oil and Gas	6,046.0	391.6	6,437.6	0.5%
	<i>Sub-total</i>	11,906.2	391.6	12,297.8	1.0%
3 Inoperable / Isolated Stands					
3.a	Slope	3.7	148.2	151.9	0.0%
3.b	Isolated Harvestable stands	465.6	0.0	465.6	0.0%
3.c	Non-Forested (CC)	698.7	0.0	698.7	0.1%
3.d	Non-Forested Natural Disturbance	65,789.0	5,845.2	71,634.1	6.1%
3.e	Non-Forested Vegetated	20,269.4	150,503.2	170,772.7	14.5%
3.f	Anthropogenic Vegetated	1,569.4	0.0	1,569.4	0.1%
3.g	Anthropogenic Non-Vegetated	2,840.4	279.0	3,119.4	0.3%
3.h	Naturally Non-Vegetated	209.1	1.6	210.7	0.0%
3.i	Non-Commercial TPR	86,380.3	253.8	86,634.1	7.4%
3.j	Non-Commercial Species	104,544.9	14.0	104,558.9	8.9%
3.k	Non-Commercial Stand Density	16,154.3	560.3	16,714.6	1.4%
3.l	Non-Commercial Site Index	218,637.7	19,879.1	238,516.8	20.3%
3.m	Horizontal Stand Adjustment	413.4	0.0	413.4	0.0%
	<i>Sub-total</i>	517,975.7	177,484.4	695,460.1	59.2%
4 Water Course Buffers					
4.a	Buffer	19,071.2	2,793.3	21,864.5	1.9%
	<i>Sub-total</i>	19,071.2	2,793.3	21,864.5	1.9%
5 Aquatic Features					
5.a	Rivers	7,187.1	0.0	7,187.1	0.6%
5.b	Lakes	10,427.1	21,607.3	32,034.4	2.7%
5.c	Flooded Areas	3,329.6	0.0	3,329.6	0.3%
	<i>Sub-total</i>	20,943.8	21,607.3	42,551.1	3.6%
6 Timber Harvesting Landbase					
6.a	Deciduous	126,576.4	779.7	127,356.2	10.8%
6.b	Deciduous / Coniferous	17,155.5	786.9	17,942.5	1.5%
6.c	Coniferous / Deciduous	15,572.3	1,095.6	16,667.8	1.4%
6.d	Coniferous	163,404.2	5,858.8	169,263.1	14.4%
	<i>Sub-total</i>	322,708.5	8,521.1	331,229.5	28.2%
Grand Total		954,353.9	219,589.4	1,173,943.3	100.0%

* Non FMA Area consists of a combination of Phase 3 and AVI data.



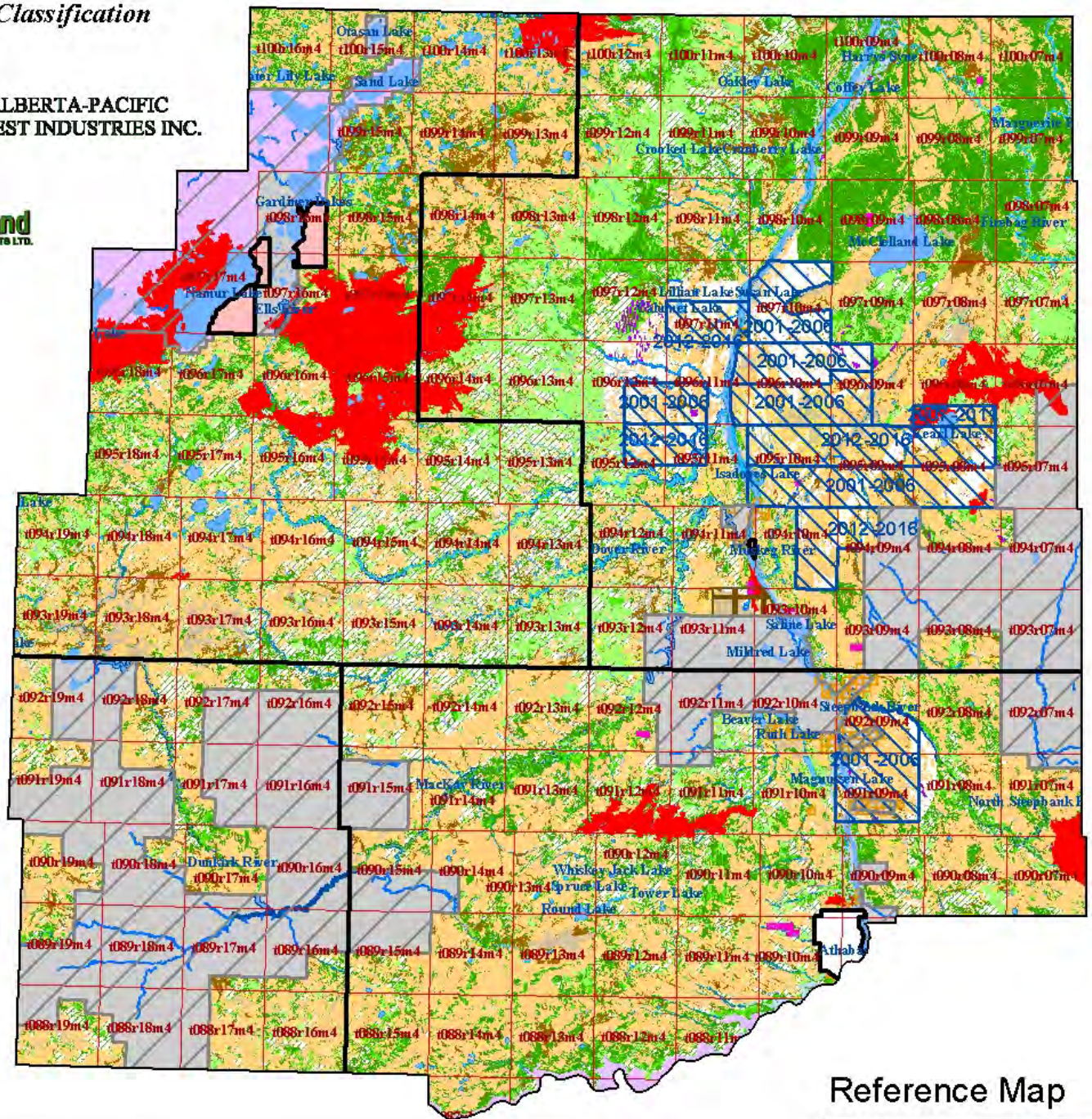
ALBERTA-PACIFIC
FOREST INDUSTRIES INC.

Alberta-Pacific FMU A15

Netdown Classification



ALBERTA-PACIFIC
FOREST INDUSTRIES INC.

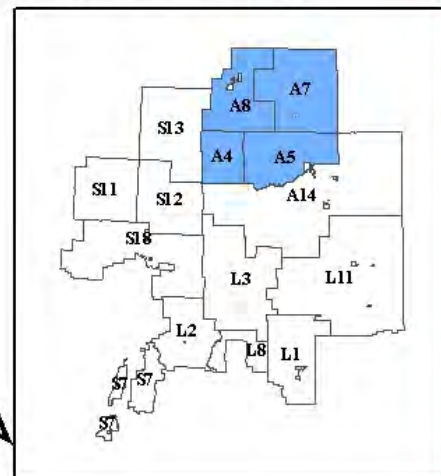


Legend

Prohibits Timber Harvesting	Recently Disturbed Areas	Aquatic Features & Water Course Buffers
Provincial Park	Recent Fires	Rivers, Lakes, Flooded Areas
Aboriginal Reserve	Oil and Gas	Water Course Buffer Productive
Ecological Reserve	Inoperable / Isolated Stands	Water Course Buffer Non-Productive
Protective Notations	Slopes > 45%	Timber Harvesting Landbase
PSP Buffers	Isolated Stands	Harvestable Deciduous
River Breaks (Deciduous Only)	Non-Forested	Harvestable Mixedwood
Private Land Reduction	Pre-91 Cutblocks	Harvestable Coniferous
	Non-Forested Natural Disturbance Areas	Harvestable Deciduous with Coniferous Understorey
	Non-Forested Stand Area	
	Non-Commercial Stand Area	

Land Tenure Status	Embedded Non-J Land Classification
Non-J Area	Grazing Leases
Aboriginal Reserves	Maintain Our Forest Blocks

Reference Map



1:800,000



Created February 10, 2004 Projection: UTM 12 Datum: NAD27

Alberta-Pacific FMA Area Landbase Summary Table

Timber Zone 11 - FMU A15



Forest Management Units A4, A5, A7 & A8					
Table Index	Netdown Category	Phase 3 Non-		Total	Landbase
		FMA	FMA		
		Area(ha)	Area(ha)	Area(ha)	Area(ha)
1 Prohibits/Precludes Timber Harvesting					
1.a	Provincial Park	4,743.6	26,186.0	30,929.6	2.2%
1.b	Aboriginal Reserve	90.7	816.7	907.4	0.1%
1.c	Ecological Reserve	0.0	0.0	0.0	0.0%
1.d	Protected Notations (No Harvesting Permitted)	1,057.4	0.0	1,057.4	0.1%
1.e	PSP Buffers	58.2	0.0	58.2	0.0%
1.f	River Breaks	6,585.4	0.0	6,585.4	0.5%
1.g	Private Land	1,181.9	2,753.4	3,935.3	0.3%
	<i>Sub-total</i>	<i>13,717.3</i>	<i>29,756.1</i>	<i>43,473.4</i>	<i>3.0%</i>
2 Recently Disturbed Areas					
2.a	Fire	56,230.8	0.0	56,230.8	3.9%
2.b	Oil and Gas	11,773.5	26,748.8	38,522.3	2.7%
	<i>Sub-total</i>	<i>68,004.3</i>	<i>26,748.8</i>	<i>94,753.1</i>	<i>6.6%</i>
3 Inoperable / Isolated Stands					
3.a	Slope	11.8	0.0	11.8	0.0%
3.b	Isolated Harvestable stands	994.1	0.0	994.1	0.1%
3.c	Non-Forested (CC)	1,473.1	84.7	1,557.8	0.1%
3.d	Non-Forested Natural Disturbance	54,695.9	4,763.0	59,458.9	4.1%
3.e	Non-Forested Vegetated	30,464.8	152,015.7	182,480.5	12.7%
3.f	Anthropogenic Vegetated	1,575.4	0.0	1,575.4	0.1%
3.g	Anthropogenic Non-Vegetated	7,170.1	365.3	7,535.4	0.5%
3.h	Naturally Non-Vegetated	329.4	0.0	329.4	0.0%
3.i	Non-Commercial TPR	84,221.6	1,160.5	85,382.1	5.9%
3.j	Non-Commercial Species	134,515.6	1,613.1	136,128.7	9.5%
3.k	Non-Commercial Stand Density	22,495.4	508.8	23,004.2	1.6%
3.l	Non-Commercial Site Index	212,299.6	26,876.5	239,176.1	16.7%
3.m	Horizontal Stand Adjustment	751.8	0.0	751.8	0.1%
	<i>Sub-total</i>	<i>550,998.5</i>	<i>187,387.6</i>	<i>738,386.0</i>	<i>51.4%</i>
4 Water Course Buffers					
4.a	Buffer	22,166.0	2,305.6	24,471.6	1.7%
	<i>Sub-total</i>	<i>22,166.0</i>	<i>2,305.6</i>	<i>24,471.6</i>	<i>1.7%</i>
5 Aquatic Features					
5.a	Rivers	7,082.9	0.0	7,082.9	0.5%
5.b	Lakes	12,312.4	15,018.8	27,331.2	1.9%
5.c	Flooded Areas	7,332.2	0.0	7,332.2	0.5%
	<i>Sub-total</i>	<i>26,727.5</i>	<i>15,018.8</i>	<i>41,746.3</i>	<i>2.9%</i>
6 Oil Sands - Future Project Deletions: Impact on Timber Harvesting Landbase¹					
6.a	Deciduous	21,879.9	0.0	21,879.9	1.0%
6.b	Deciduous / Coniferous	2,330.0	0.0	2,330.0	0.2%
6.c	Coniferous / Deciduous	2,176.5	0.0	2,176.5	0.2%
6.d	Coniferous	13,555.3	0.0	13,555.3	1.2%
	<i>Sub-total</i>	<i>39,941.7</i>	<i>0.0</i>	<i>39,941.7</i>	<i>2.8%</i>
7 Timber Harvesting Landbase					
7.a	Deciduous	221,008.7	4,382.3	225,390.9	15.7%
7.b	Deciduous / Coniferous	22,493.7	2,052.9	24,546.7	1.7%
7.c	Coniferous / Deciduous	21,624.7	4,859.7	26,484.4	1.8%
7.d	Coniferous	167,300.7	9,997.3	177,298.0	12.3%
	<i>Sub-total</i>	<i>432,427.8</i>	<i>21,292.2</i>	<i>453,720.0</i>	<i>31.6%</i>
Grand Total		1,153,983.0	282,509.1	1,436,492.1	100.0%

1: Harvestable landbase within the oil sands future deletion areas will be available for harvesting up to a specified date after which these areas are removed from the landbase.



Alberta-Pacific FMU L1

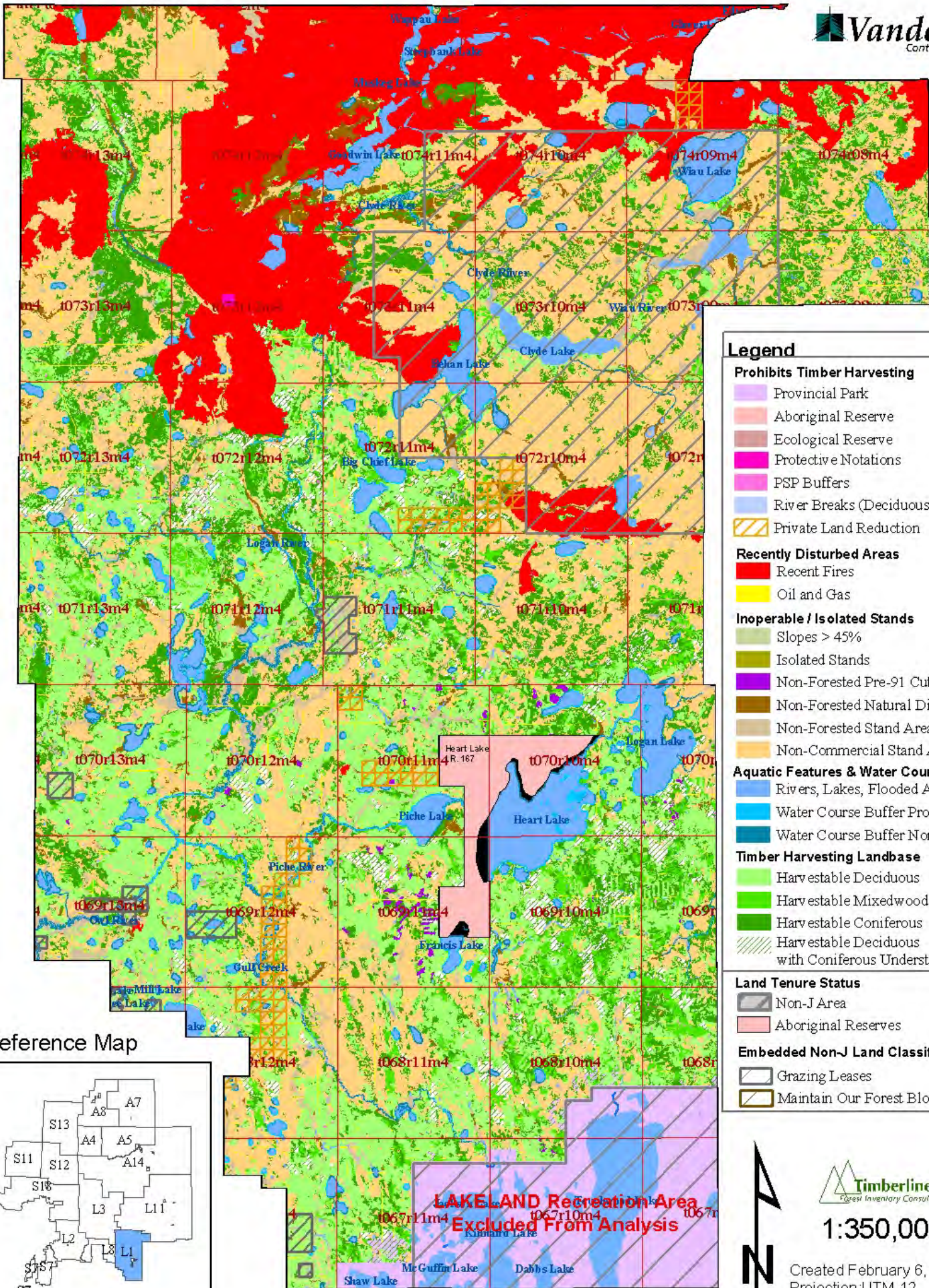
Netdown Classification



ALBERTA-PACIFIC
FOREST INDUSTRIES INC.

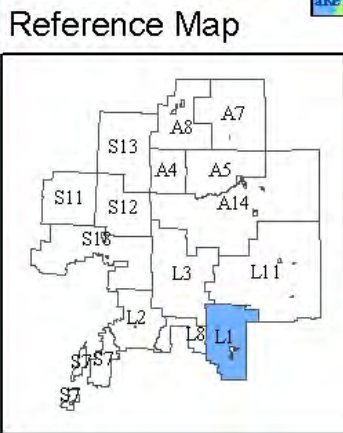


Vanderwell
Contractors (1971) Ltd.



Legend

- Prohibits Timber Harvesting**
 - Provincial Park
 - Aboriginal Reserve
 - Ecological Reserve
 - Protective Notations
 - PSP Buffers
 - River Breaks (Deciduous Only)
 - Private Land Reduction
- Recently Disturbed Areas**
 - Recent Fires
 - Oil and Gas
- Inoperable / Isolated Stands**
 - Slopes > 45%
 - Isolated Stands
 - Non-Forested Pre-91 Cutblocks
 - Non-Forested Natural Disturbance Areas
 - Non-Forested Stand Area
 - Non-Commercial Stand Area
- Aquatic Features & Water Course Buffers**
 - Rivers, Lakes, Flooded Areas
 - Water Course Buffer Productive
 - Water Course Buffer Non-Productive
- Timber Harvesting Landbase**
 - Harvestable Deciduous
 - Harvestable Mixedwood
 - Harvestable Coniferous
 - Harvestable Deciduous with Coniferous Understory
- Land Tenure Status**
 - Non-J Area
 - Aboriginal Reserves
- Embedded Non-J Land Classification**
 - Grazing Leases
 - Maintain Our Forest Blocks



Timberline
Forest Inventory Consultants

1:350,000

Created February 6, 2003
Projection: UTM 12 Datum: NAD27

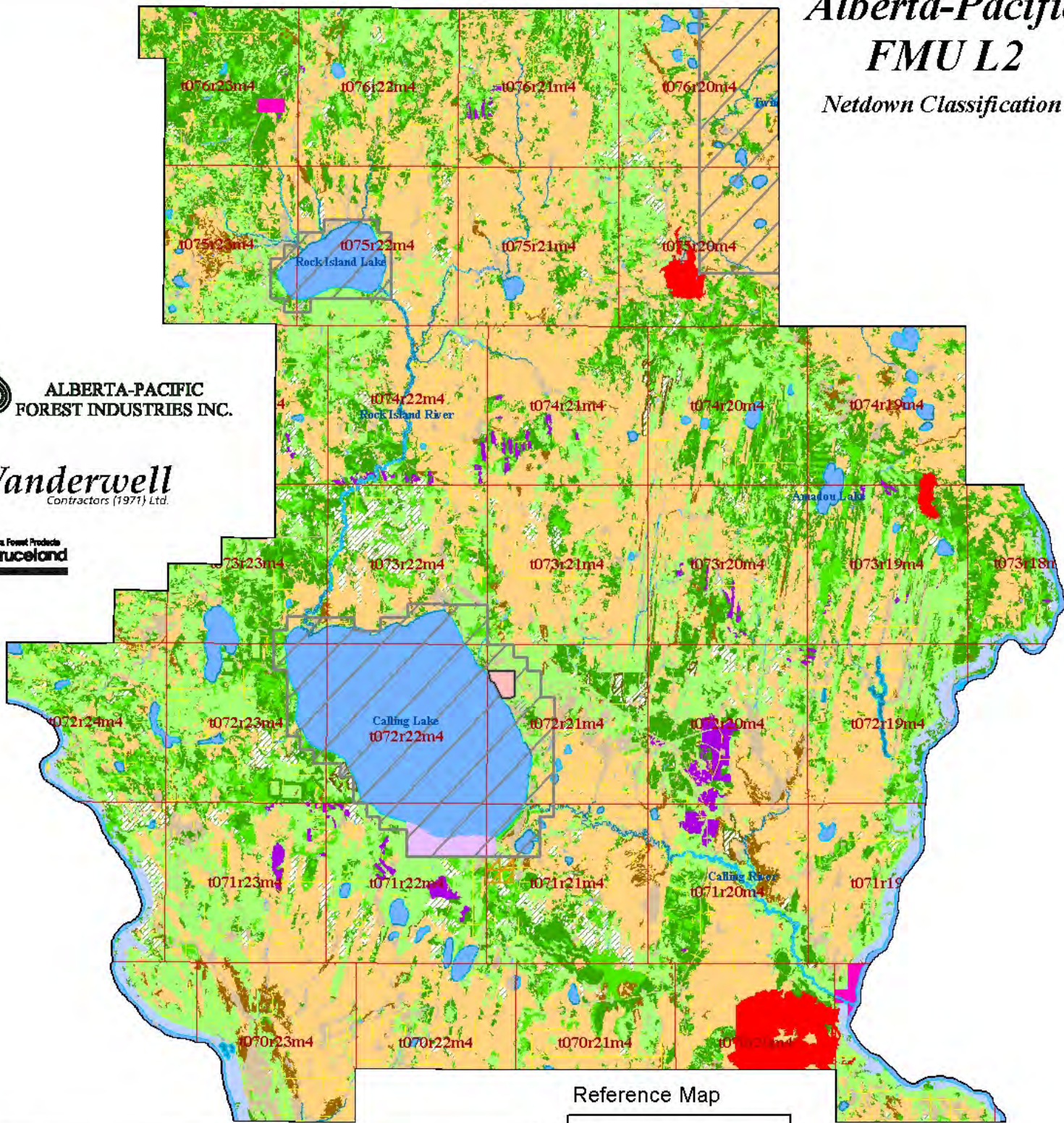
Alberta-Pacific FMA Area Landbase Summary Table

Timber Zone 3 - FMU L1

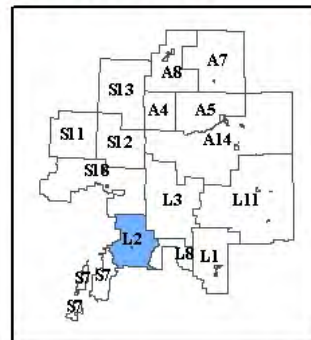


		Forest Management Unit L1			
Table Index	Netdown Category	FMA Area(ha)	Non-FMA Area(ha)	Total Area(ha)	Landbase (%)
1 Prohibits/Precludes Timber Harvesting					
1.a	Provincial Park	1,042.8	0.0	1,042.8	0.3%
1.b	Aboriginal Reserve	0.0	0.0	0.0	0.0%
1.c	Ecological Reserve	0.0	0.0	0.0	0.0%
1.d	Protected Notations (No Harvesting Permitted)	66.1	0.0	66.1	0.0%
1.e	PSP Buffers	89.6	0.0	89.6	0.0%
1.f	River Breaks	0.0	0.0	0.0	0.0%
1.g	Private Land	518.3	0.0	518.4	0.2%
	<i>Sub-total</i>	1,716.9	0.0	1,716.9	0.5%
2 Recently Disturbed Areas					
2.a	Fire	45,270.1	5,606.6	50,876.7	15.3%
2.b	Oil and Gas	3,777.3	415.9	4,193.1	1.3%
	<i>Sub-total</i>	49,047.4	6,022.5	55,069.9	16.5%
3 Inoperable / Isolated Stands					
3.a	Slope	0.6	0.0	0.6	0.0%
3.b	Isolated Harvestable stands	153.1	57.0	210.0	0.1%
3.c	Non-Forested (CC)	586.2	0.0	586.2	0.2%
3.d	Non-Forested Natural Disturbance	4,486.2	1,492.2	5,978.5	1.8%
3.e	Non-Forested Vegetated	8,697.9	1,803.8	10,501.7	3.1%
3.f	Anthropogenic Vegetated	1,188.6	444.3	1,632.9	0.5%
3.g	Anthropogenic Non-Vegetated	1,141.7	242.8	1,384.5	0.4%
3.h	Naturally Non-Vegetated	11.5	0.0	11.5	0.0%
3.i	Non-Commercial TPR	7,601.1	6,485.8	14,087.0	4.2%
3.j	Non-Commercial Species	34,235.0	13,613.9	47,848.9	14.3%
3.k	Non-Commercial Stand Density	2,062.8	505.9	2,568.7	0.8%
3.l	Non-Commercial Site Index	24,618.2	8,234.6	32,852.8	9.8%
3.m	Horizontal Stand Adjustment	468.3	7.5	475.7	0.1%
	<i>Sub-total</i>	85,251.1	32,887.7	118,138.8	35.4%
4 Water Course Buffers					
4.a	Buffer	8,119.7	1,269.6	9,389.3	2.8%
	<i>Sub-total</i>	8,119.7	1,269.6	9,389.3	2.8%
5 Aquatic Features					
5.a	Rivers	282.4	38.6	321.0	0.1%
5.b	Lakes	13,315.8	5,104.1	18,419.9	5.5%
5.c	Flooded Areas	971.0	16.7	987.8	0.3%
	<i>Sub-total</i>	14,569.3	5,159.4	19,728.6	5.9%
6 Timber Harvesting Landbase					
6.a	Deciduous	69,767.7	3,042.9	72,810.6	21.8%
6.b	Deciduous / Coniferous	5,502.0	544.3	6,046.3	1.8%
6.c	Coniferous / Deciduous	5,913.3	265.4	6,178.7	1.9%
6.d	Coniferous	38,580.4	5,942.4	44,522.8	13.3%
	<i>Sub-total</i>	119,763.4	9,795.1	129,558.4	38.8%
Grand Total		278,467.7	55,134.2	333,601.9	100.0%

Alberta-Pacific FMU L2 Netdown Classification



Reference Map



Legend

Prohibits Timber Harvesting	Recently Disturbed Areas	Aquatic Features & Water Course Buffers
Provincial Park	Recent Fires	Rivers, Lakes, Flooded Areas
Aboriginal Reserve	Oil and Gas	Water Course Buffer Productive
Ecological Reserve	Inoperable / Isolated Stands	Water Course Buffer Non-Productive
Protective Notations	Slopes > 45%	Timber Harvesting Landbase
PSP Buffers	Isolated Stands	Harvestable Deciduous
River Breaks (Deciduous Only)	Non-Forested Pre-91 Cutlocks	Harvestable Mixedwood
Private Land Reduction	Non-Forested Natural Disturbance Areas	Harvestable Coniferous
	Non-Forested Stand Area	Harvestable Deciduous with Coniferous Understory
	Non-Commercial Stand Area	

Land Tenure Status	Embedded Non-J Land Classification
Non-J Area	Grazing Leases
Aboriginal Reserves	Maintain Our Forest Blocks

1:350,000



Alberta-Pacific FMA Area Landbase Summary Table

Timber Zone 4 - FMU L2



		Forest Management Unit L2			
Table Index	Netdown Category	FMA Area(ha)	Non-FMA Area(ha)	Total Area(ha)	Landbase (%)
1 Prohibits/Precludes Timber Harvesting					
1.a	Provincial Park	2.1	750.8	752.9	0.3%
1.b	Aboriginal Reserve	0.0	198.4	198.4	0.1%
1.c	Ecological Reserve	0.0	0.0	0.0	0.0%
1.d	Protected Notations (No Harvesting Permitted)	352.5	0.0	352.5	0.1%
1.e	PSP Buffers	52.9	27.8	80.7	0.0%
1.f	River Breaks	3,845.7	0.0	3,845.7	1.3%
1.g	Private Land	25.7	0.0	25.7	0.0%
	<i>Sub-total</i>	4,278.8	977.0	5,255.8	1.7%
2 Recently Disturbed Areas					
2.a	Fire	3,312.0	156.3	3,468.4	1.2%
2.b	Oil and Gas	5,563.3	345.2	5,908.5	2.0%
	<i>Sub-total</i>	8,875.3	501.5	9,376.8	3.1%
3 Inoperable / Isolated Stands					
3.a	Slope	0.0	0.0	0.0	0.0%
3.b	Isolated Harvestable stands	124.3	22.4	146.7	0.0%
3.c	Non-Forested (CC)	1,214.3	1,048.9	2,263.2	0.8%
3.d	Non-Forested Natural Disturbance	4,494.7	239.4	4,734.1	1.6%
3.e	Non-Forested Vegetated	13,664.9	875.8	14,540.6	4.8%
3.f	Anthropogenic Vegetated	261.3	125.4	386.7	0.1%
3.g	Anthropogenic Non-Vegetated	1,207.2	321.6	1,528.7	0.5%
3.h	Naturally Non-Vegetated	28.4	4.9	33.3	0.0%
3.i	Non-Commercial TPR	12,414.7	594.5	13,009.2	4.3%
3.j	Non-Commercial Species	40,519.3	4,710.1	45,229.4	15.0%
3.k	Non-Commercial Stand Density	1,260.5	98.3	1,358.8	0.5%
3.l	Non-Commercial Site Index	47,883.1	2,170.8	50,054.0	16.7%
3.m	Horizontal Stand Adjustment	240.3	34.9	275.2	0.1%
	<i>Sub-total</i>	123,312.9	10,247.0	133,559.9	44.4%
4 Water Course Buffers					
4.a	Buffer	4,005.8	981.6	4,987.4	1.7%
	<i>Sub-total</i>	4,005.8	981.6	4,987.4	1.7%
5 Aquatic Features					
5.a	Rivers	2,303.3	10.6	2,313.9	0.8%
5.b	Lakes	2,778.5	16,131.6	18,910.1	6.3%
5.c	Flooded Areas	535.1	16.2	551.3	0.2%
	<i>Sub-total</i>	5,616.9	16,158.4	21,775.4	7.2%
6 Timber Harvesting Landbase					
6.a	Deciduous	63,372.9	4,688.9	68,061.8	22.6%
6.b	Deciduous / Coniferous	7,208.4	164.1	7,372.5	2.5%
6.c	Coniferous / Deciduous	9,395.2	347.2	9,742.5	3.2%
6.d	Coniferous	36,695.4	3,712.0	40,407.5	13.4%
	<i>Sub-total</i>	116,671.9	8,912.3	125,584.2	41.8%
Grand Total		262,761.8	37,777.8	300,539.6	100.0%



Alberta-Pacific FMU L3 Netdown Classification

Legend

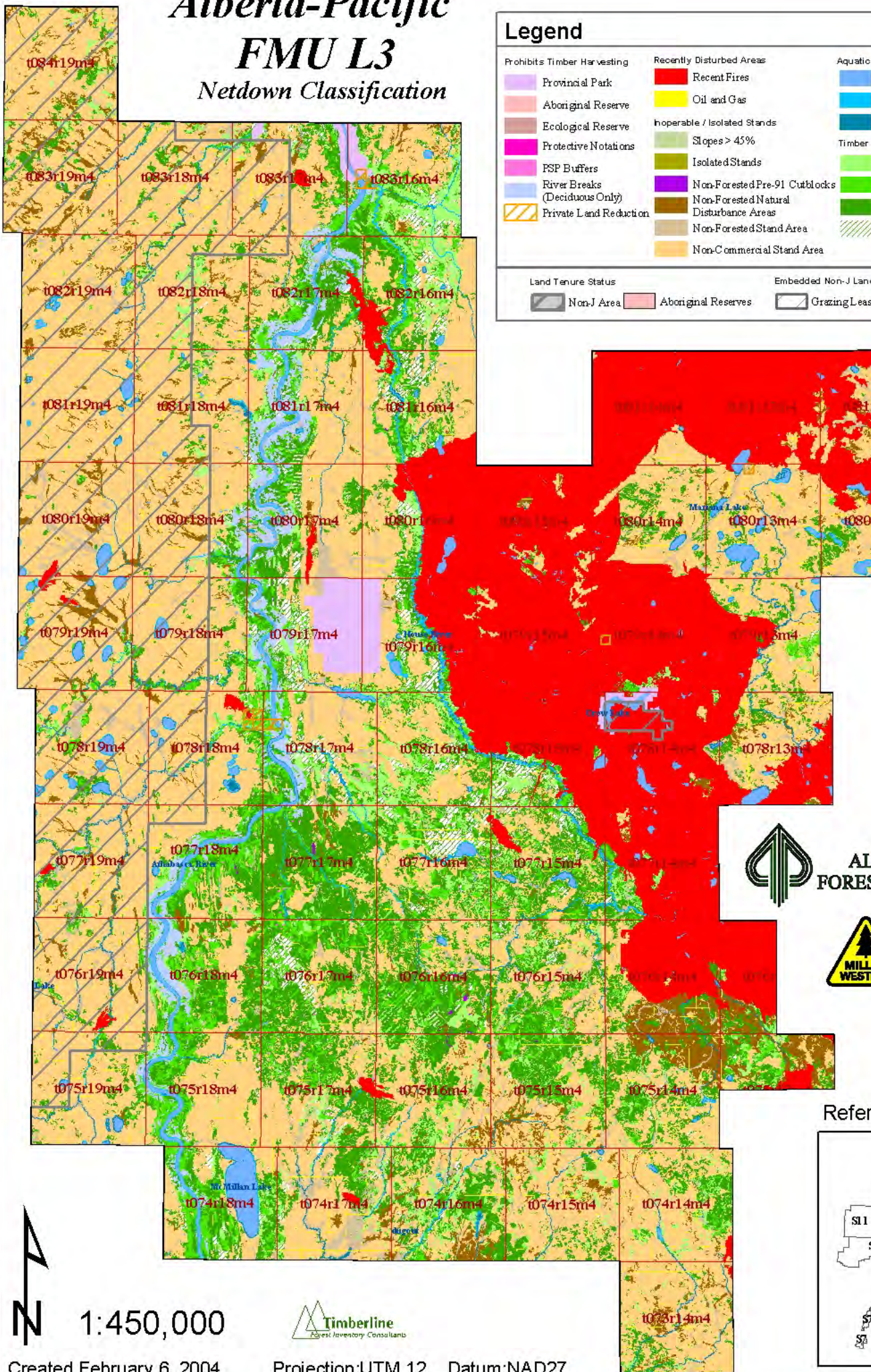
Prohibits Timber Harvesting	Recently Disturbed Areas	Aquatic Features & Water Course Buffers
Provincial Park	Recent Fires	Rivers, Lakes, Flooded Areas
Aboriginal Reserve	Oil and Gas	Water Course Buffer Productive
Ecological Reserve	Operable / Isolated Stands	Water Course Buffer Non-Productive
Protective Notations	Slopes > 45%	Timber Harvesting Landbase
PSP Buffers	Isolated Stands	Harvestable Deciduous
River Breaks (Deciduous Only)	Non-Forested Pre-91 Cutblocks	Harvestable Mixedwood
Private Land Reduction	Non-Forested Natural Disturbance Areas	Harvestable Coniferous
	Non-Forested Stand Area	Harvestable Deciduous with Coniferous Understory
	Non-Commercial Stand Area	

Land Tenure Status

Non-J Area	Aboriginal Reserves
------------	---------------------

Embedded Non-J Land Classification

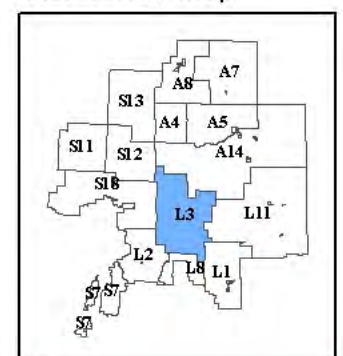
Grazing Leases	Maintain Our Forest Blocks
----------------	----------------------------



**ALBERTA-PACIFIC
FOREST INDUSTRIES INC.**



Reference Map



1:450,000



Created February 6, 2004

Projection: UTM 12 Datum: NAD27

Alberta-Pacific FMA Area Landbase Summary Table

Timber Zone 5 - FMU L3



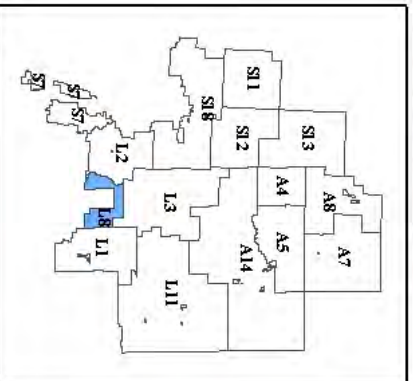
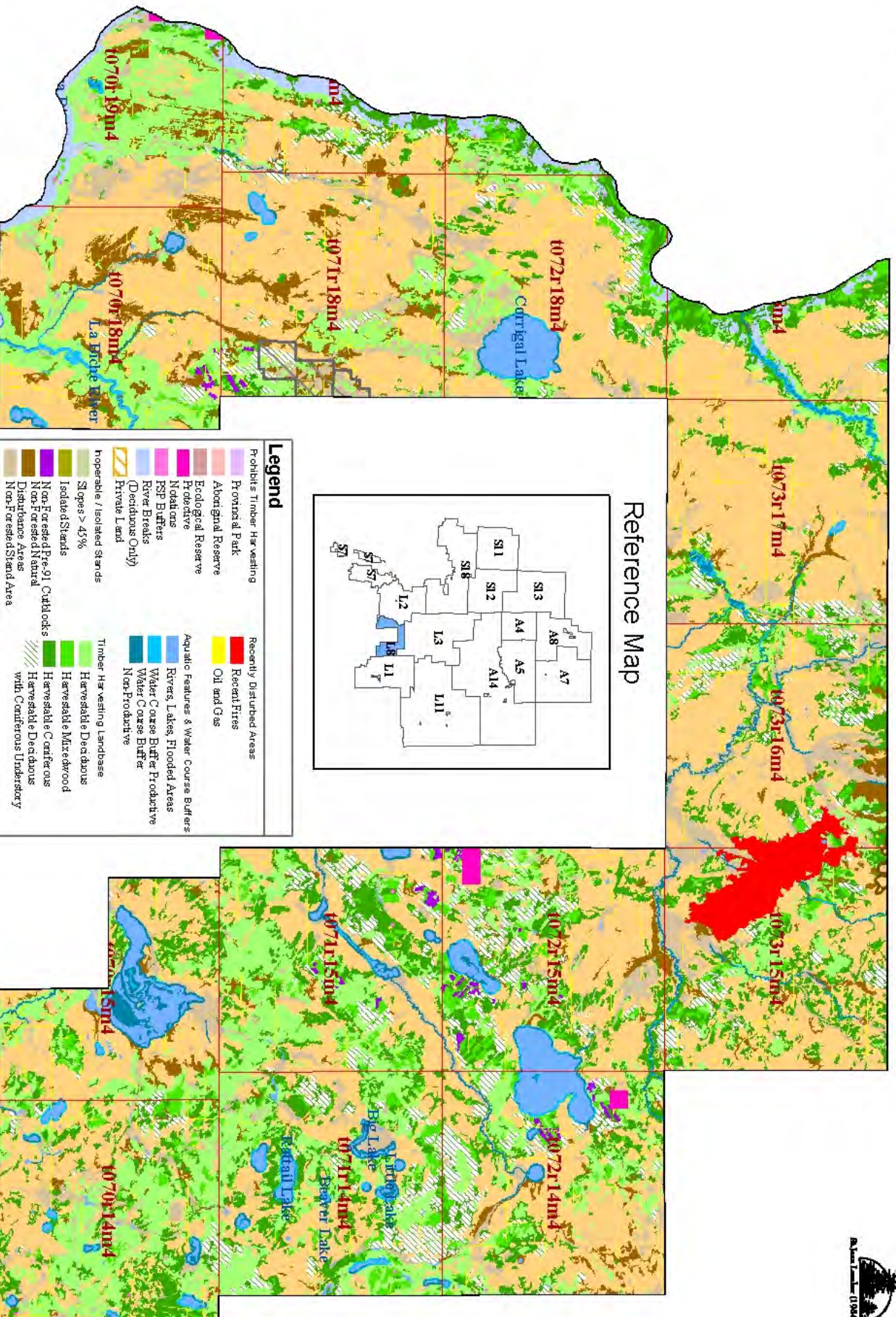
		Forest Management Unit L3			
Table Index	Netdown Category	FMA Area(ha)	Non-FMA Area(ha)	Total Area(ha)	Landbase (%)
1 Prohibits/Precludes Timber Harvesting					
1.a	Provincial Park	5,740.1	0.0	5,740.1	1.0%
1.b	Aboriginal Reserve	0.0	0.0	0.0	0.0%
1.c	Ecological Reserve	0.0	0.0	0.0	0.0%
1.d	Protected Notations (No Harvesting Permitted)	9.8	0.0	9.8	0.0%
1.e	PSP Buffers	73.4	0.0	73.4	0.0%
1.f	River Breaks	9,000.3	31.3	9,031.6	1.5%
1.g	Private Land	308.8	0.0	308.8	0.1%
	<i>Sub-total</i>	<i>15,132.4</i>	<i>31.3</i>	<i>15,163.7</i>	<i>2.6%</i>
2 Recently Disturbed Areas					
2.a	Fire	101,870.5	480.0	102,350.5	17.4%
2.b	Oil and Gas	4,548.8	1,667.6	6,216.4	1.1%
	<i>Sub-total</i>	<i>106,419.4</i>	<i>2,147.5</i>	<i>108,566.9</i>	<i>18.5%</i>
3 Inoperable / Isolated Stands					
3.a	Slope	0.0	0.0	0.0	0.0%
3.b	Isolated Harvestable stands	249.4	148.2	397.5	0.1%
3.c	Non-Forested (CC)	102.6	20.7	123.4	0.0%
3.d	Non-Forested Natural Disturbance	14,859.6	8,601.9	23,461.4	4.0%
3.e	Non-Forested Vegetated	13,696.5	5,527.4	19,223.9	3.3%
3.f	Anthropogenic Vegetated	1,343.3	235.4	1,578.8	0.3%
3.g	Anthropogenic Non-Vegetated	708.8	7.6	716.4	0.1%
3.h	Naturally Non-Vegetated	302.1	0.0	302.1	0.1%
3.i	Non-Commercial TPR	28,930.7	30,983.5	59,914.2	10.2%
3.j	Non-Commercial Species	28,564.7	25,340.4	53,905.2	9.2%
3.k	Non-Commercial Stand Density	2,445.0	274.4	2,719.4	0.5%
3.l	Non-Commercial Site Index	89,894.9	45,629.7	135,524.7	23.1%
3.m	Horizontal Stand Adjustment	201.8	2.5	204.3	0.0%
	<i>Sub-total</i>	<i>181,299.4</i>	<i>116,771.8</i>	<i>298,071.2</i>	<i>50.7%</i>
4 Water Course Buffers					
4.a	Buffer	8,328.6	2,710.8	11,039.4	1.9%
	<i>Sub-total</i>	<i>8,328.6</i>	<i>2,710.8</i>	<i>11,039.4</i>	<i>1.9%</i>
5 Aquatic Features					
5.a	Rivers	3,880.5	2.5	3,883.0	0.7%
5.b	Lakes	5,340.7	1,725.6	7,066.2	1.2%
5.c	Flooded Areas	580.5	60.2	640.6	0.1%
	<i>Sub-total</i>	<i>9,801.6</i>	<i>1,788.2</i>	<i>11,589.9</i>	<i>2.0%</i>
6 Timber Harvesting Landbase					
6.a	Deciduous	32,784.3	2,751.7	35,536.0	6.0%
6.b	Deciduous / Coniferous	10,152.3	605.6	10,757.8	1.8%
6.c	Coniferous / Deciduous	13,460.7	492.3	13,953.0	2.4%
6.d	Coniferous	75,998.7	6,710.6	82,709.3	14.1%
	<i>Sub-total</i>	<i>132,396.0</i>	<i>10,560.1</i>	<i>142,956.1</i>	<i>24.3%</i>
Grand Total		453,377.4	134,009.7	587,387.1	100.0%



ALBERTA-PACIFIC
FOREST INDUSTRIES INC.

Alberta-Pacific FMU L8

Netdown Classification



Reference Map

Legend

Prohibits Timber Harvesting

- Provincial Park
- Aboriginal Reserve
- Ecological Reserve
- Protective
- Nodations
- PSP Buffers
- River Breaks
- (Declarations Only)
- Private Land
- hoperable / Isolated Stands
- Slopes > 45%
- Isolated Stands
- Non-Forest Pre-91 Cutblocks
- Non-Forest Natural
- Disturbance Areas
- Non-Forest Stand Area
- Non-Commercial Stand Area

Recently Disturbed Areas

- Recent Fires
- Oil and Gas

Aquatic Features & Water Course Buffers

- Rivers, Lakes, Flooded Areas
- Water Course Buffer Productive
- Water Course Buffer Non-Productive

Timber Harvesting Landbase

- Harvestable Deadwoods
- Harvestable Mixedwood
- Harvestable Coniferous
- Harvestable Deciduous with Coniferous Understorey

Land Tenure Status

- Non-J Area
- Aboriginal Reserves

Embedded Non-J Land Classification

- Grazing Leases
- Marican Out
- Forest Blocks

1:250,000



Created February 6, 2004
Projection: UTM 12 Datum: NAD27



Alberta-Pacific FMA Area Landbase Summary Table

Timber Zone 2 - FMU L8



		Forest Management Unit L8			
Table Index	Netdown Category	FMA Area(ha)	Non-FMA Area(ha)	Total Area(ha)	Landbase (%)
1 Prohibits/Precludes Timber Harvesting					
1.a	Provincial Park	6.4	0.0	6.4	0.0%
1.b	Aboriginal Reserve	0.0	0.0	0.0	0.0%
1.c	Ecological Reserve	0.0	0.0	0.0	0.0%
1.d	Protected Notations (No Harvesting Permitted)	239.7	0.0	239.7	0.2%
1.e	PSP Buffers	35.7	0.0	35.7	0.0%
1.f	River Breaks	1,611.9	0.0	1,611.9	1.3%
1.g	Private Land	0.0	0.0	0.0	0.0%
	<i>Sub-total</i>	1,893.6	0.0	1,893.6	1.5%
2 Recently Disturbed Areas					
2.a	Fire	1,593.2	0.0	1,593.2	1.3%
2.b	Oil and Gas	2,152.7	17.5	2,170.2	1.7%
	<i>Sub-total</i>	3,745.8	17.5	3,763.3	3.0%
3 Inoperable / Isolated Stands					
3.a	Slope	0.0	0.0	0.0	0.0%
3.b	Isolated Harvestable stands	39.2	0.0	39.2	0.0%
3.c	Non-Forested (CC)	310.4	0.0	310.4	0.2%
3.d	Non-Forested Natural Disturbance	5,308.9	121.3	5,430.2	4.3%
3.e	Non-Forested Vegetated	8,070.8	79.1	8,149.8	6.5%
3.f	Anthropogenic Vegetated	263.9	154.8	418.8	0.3%
3.g	Anthropogenic Non-Vegetated	321.3	0.0	321.3	0.3%
3.h	Naturally Non-Vegetated	3.0	0.0	3.0	0.0%
3.i	Non-Commercial TPR	4,213.2	0.0	4,213.2	3.3%
3.j	Non-Commercial Species	24,444.4	62.4	24,506.8	19.4%
3.k	Non-Commercial Stand Density	1,672.0	5.1	1,677.1	1.3%
3.l	Non-Commercial Site Index	23,084.0	65.0	23,149.0	18.4%
3.m	Horizontal Stand Adjustment	10.9	0.0	11.0	0.0%
	<i>Sub-total</i>	67,741.9	487.8	68,229.7	54.1%
4 Water Course Buffers					
4.a	Buffer	3,451.1	0.0	3,451.1	2.7%
	<i>Sub-total</i>	3,451.1	0.0	3,451.1	2.7%
5 Aquatic Features					
5.a	Rivers	45.8	0.0	45.8	0.0%
5.b	Lakes	3,125.1	0.0	3,125.1	2.5%
5.c	Flooded Areas	226.8	0.7	227.6	0.2%
	<i>Sub-total</i>	3,397.7	0.7	3,398.5	2.7%
6 Timber Harvesting Landbase					
6.a	Deciduous	26,421.6	192.3	26,613.9	21.1%
6.b	Deciduous / Coniferous	1,942.8	1.4	1,944.2	1.5%
6.c	Coniferous / Deciduous	2,443.9	3.1	2,446.9	1.9%
6.d	Coniferous	14,387.6	7.3	14,394.9	11.4%
	<i>Sub-total</i>	45,195.8	204.1	45,399.9	36.0%
Grand Total		125,426.0	710.1	126,136.1	100.0%

Alberta-Pacific FMA Area Landbase Summary Table

Timber Zone 6 - FMU L11



		Forest Management Unit L11			
Table Index	Netdown Category	FMA Area(ha)	Non-FMA Area(ha)	Total Area(ha)	Landbase (%)
1 Prohibits/Precludes Timber Harvesting					
1.a	Provincial Park	153.9	0.0	153.9	0.0%
1.b	Aboriginal Reserve	0.0	1,944.2	1,944.2	0.2%
1.c	Ecological Reserve	0.0	0.0	0.0	0.0%
1.d	Protected Notations (No Harvesting Permitted)	658.6	131.1	789.7	0.1%
1.e	PSP Buffers	170.1	0.0	170.1	0.0%
1.f	River Breaks	0.0	0.0	0.0	0.0%
1.g	Private Land	610.1	0.0	610.1	0.1%
	<i>Sub-total</i>	1,592.6	2,075.4	3,668.0	0.4%
2 Recently Disturbed Areas					
2.a	Fire	194,777.3	366.3	195,143.6	18.6%
2.b	Oil and Gas	11,856.7	275.0	12,131.7	1.2%
	<i>Sub-total</i>	206,634.0	641.3	207,275.3	19.8%
3 Inoperable / Isolated Stands					
3.a	Slope	0.0	0.0	0.0	0.0%
3.b	Isolated Harvestable stands	481.5	7.6	489.1	0.0%
3.c	Non-Forested (CC)	52.1	0.0	52.1	0.0%
3.d	Non-Forested Natural Disturbance	21,086.3	447.6	21,533.9	2.1%
3.e	Non-Forested Vegetated	36,642.8	616.3	37,259.0	3.6%
3.f	Anthropogenic Vegetated	1,930.8	76.8	2,007.6	0.2%
3.g	Anthropogenic Non-Vegetated	2,202.9	160.6	2,363.5	0.2%
3.h	Naturally Non-Vegetated	6.3	0.0	6.3	0.0%
3.i	Non-Commercial TPR	71,013.7	575.1	71,588.8	6.8%
3.j	Non-Commercial Species	107,091.5	2,556.7	109,648.2	10.5%
3.k	Non-Commercial Stand Density	14,332.6	304.0	14,636.6	1.4%
3.l	Non-Commercial Site Index	196,428.4	3,708.5	200,136.9	19.1%
3.m	Horizontal Stand Adjustment	195.7	3.6	199.2	0.0%
	<i>Sub-total</i>	451,464.6	8,456.8	459,921.3	43.9%
4 Water Course Buffers					
4.a	Buffer	23,118.1	2,283.2	25,401.3	2.4%
	<i>Sub-total</i>	23,118.1	2,283.2	25,401.3	2.4%
5 Aquatic Features					
5.a	Rivers	1,807.2	29.5	1,836.6	0.2%
5.b	Lakes	23,019.0	17,851.9	40,870.9	3.9%
5.c	Flooded Areas	2,971.7	46.8	3,018.5	0.3%
	<i>Sub-total</i>	27,797.9	17,928.2	45,726.1	4.4%
6 Timber Harvesting Landbase					
6.a	Deciduous	152,582.0	4,487.2	157,069.2	15.0%
6.b	Deciduous / Coniferous	11,754.0	357.7	12,111.8	1.2%
6.c	Coniferous / Deciduous	9,384.3	340.8	9,725.1	0.9%
6.d	Coniferous	123,251.5	3,525.1	126,776.6	12.1%
	<i>Sub-total</i>	296,971.9	8,710.8	305,682.7	29.2%
Grand Total		1,007,579.1	40,095.6	1,047,674.7	100.0%





**ALBERTA
PACIFIC**

FOREST INDUSTRIES INC

Appendix III : Private Land Reductions

Timber Zone 1 (FMU S7)

<i>Township</i>	<i>Section</i>	<i>¼ Section</i>	<i>Legal Subdivision</i>	<i>Percent Reduction</i>
68124	17	SE	00	1.24%
68124	21	SE	00	3.46%
68124	21	NE	09	3.51%
68124	21	NE	10	3.51%
68124	21	NE	16	3.51%
68124	22	SW	00	2.27%
68124	22	SE	00	2.27%
68124	22	NW	00	2.27%
68124	22	NE	00	2.27%
68124	27	SW	00	7.64%
68124	27	SE	00	7.64%
68124	27	NW	00	7.64%
68124	27	NE	00	7.64%
68124	33	SW	00	3.93%
68124	33	SE	00	3.93%
68124	33	NW	00	3.93%
68124	33	NE	00	3.93%
68124	34	SW	00	4.08%
68124	34	SE	00	4.08%
68124	34	NW	00	4.08%
68124	34	NE	00	4.08%
69124	3	SW	00	7.89%
69124	3	SE	00	7.89%
69124	3	NW	00	7.89%
69124	3	NE	00	7.89%
69124	10	SW	00	15.53%
69124	10	SE	00	15.53%
69124	10	NW	00	15.53%
69124	10	NE	00	15.53%
69124	15	SW	00	7.64%
69124	15	SE	00	7.64%
69124	15	NW	00	7.64%
69124	15	NE	00	7.64%
69124	22	SW	00	7.61%
69124	22	SE	00	7.61%
69124	22	NW	00	7.61%
69124	22	NE	00	7.61%
69124	26	SW	00	2.31%
69124	26	NW	00	3.81%
69124	26	NE	00	19.00%
69124	27	SE	00	34.31%
69124	35	SE	00	12.50%
69124	35	SW	00	3.81%
69124	35	NW	00	12.14%
69244	18	NW	00	3.13%
69254	25	SE	00	48.18%

Timber Zone 2 (FMU L8)

<i>Township</i>	<i>Section</i>	<i>¼ Section</i>	<i>Legal Subdivision</i>	<i>Percent Reduction</i>
No Private Land Identified				

Timber Zone 3 (FMU L1)

<i>Township</i>	<i>Section</i>	<i>¼ Section</i>	<i>Legal Subdivision</i>	<i>Percent Reduction</i>
68124	17	SE	00	1.24%
68124	21	SE	00	3.46%
68124	21	NE	09	3.51%
68124	21	NE	10	3.51%
68124	21	NE	16	3.51%
68124	22	SW	00	2.27%
68124	22	SE	00	2.27%
68124	22	NW	00	2.27%
68124	22	NE	00	2.27%
68124	27	SW	00	7.64%
68124	27	SE	00	7.64%
68124	27	NW	00	7.64%
68124	27	NE	00	7.64%
68124	33	SW	00	3.93%
68124	33	SE	00	3.93%
68124	33	NW	00	3.93%
68124	33	NE	00	3.93%
68124	34	SW	00	4.08%
68124	34	SE	00	4.08%
68124	34	NW	00	4.08%
68124	34	NE	00	4.08%
69124	3	SW	00	7.89%
69124	3	SE	00	7.89%
69124	3	NW	00	7.89%
69124	3	NE	00	7.89%
69124	10	SW	00	15.53%
69124	10	SE	00	15.53%
69124	10	NW	00	15.53%
69124	10	NE	00	15.53%
69124	15	SW	00	7.64%
69124	15	SE	00	7.64%
69124	15	NW	00	7.64%
69124	15	NE	00	7.64%
69124	22	SW	00	7.61%
69124	22	SE	00	7.61%
69124	22	NW	00	7.61%
69124	22	NE	00	7.61%
69124	26	SW	00	2.31%
69124	26	NW	00	3.81%
69124	26	NE	00	19.00%
69124	27	SE	00	34.31%
69124	35	SE	00	12.50%
69124	35	SW	00	3.81%
69124	35	NW	00	12.14%
70114	15	SW	00	6.25%
70114	15	SE	00	6.25%
70114	15	NW	00	6.25%
70114	15	NE	00	6.25%
70114	16	SW	00	1.00%
70114	16	SE	00	1.00%
70114	16	NW	00	1.00%

Landbase Determination (v3.0) - Appendices

<i>Township</i>	<i>Section</i>	<i>¼ Section</i>	<i>Legal Subdivision</i>	<i>Percent Reduction</i>
70114	16	NE	00	1.00%
70114	17	SW	00	11.25%
70114	17	SE	00	11.25%
70114	17	NW	00	11.25%
70114	17	NE	00	11.25%
70114	31	SW	00	3.13%
70114	31	SE	00	3.13%
70114	31	NW	00	3.13%
70114	31	NE	00	3.13%
72104	6	SW	00	6.25%
72104	6	SE	00	6.25%
72104	6	NW	00	6.25%
72104	6	NE	00	6.25%
72104	7	SW	00	7.50%
72104	7	SE	00	7.50%
72104	7	NW	00	7.50%
72104	7	NE	00	7.50%
72104	8	SW	00	13.75%
72104	8	SE	00	13.75%
72104	8	NW	00	13.75%
72104	8	NE	00	13.75%
72104	17	SW	00	12.50%
72104	17	SE	00	12.50%
72104	17	NW	00	12.50%
72104	17	NE	00	12.50%
72114	1	SW	00	12.50%
72114	1	SE	00	12.50%
72114	1	NW	00	12.50%
72114	1	NE	00	12.50%
72114	2	SW	00	12.50%
72114	2	SE	00	12.50%
72114	2	NW	00	12.50%
72114	2	NE	00	12.50%
72114	3	SW	00	6.25%
72114	3	SE	00	6.25%
72114	3	NW	00	6.25%
72114	3	NE	00	6.25%
7494	28	SW	00	15.46%
7494	28	SE	00	15.46%
7494	28	NW	00	15.46%
7494	28	NE	00	15.46%
7494	33	SW	00	7.60%
7494	33	SE	00	7.60%
7494	33	NW	00	7.60%
7494	33	NE	00	7.60%

Timber Zone 4 (FMU L2)

<i>Township</i>	<i>Section</i>	<i>¼ Section</i>	<i>Legal Subdivision</i>	<i>Percent Reduction</i>
71214	19	SW	00	9.79%
71214	19	SE	00	9.79%
71214	19	NW	00	9.79%
71214	19	NE	00	9.79%

Timber Zone 5 (FMU L3)

<i>Township</i>	<i>Section</i>	<i>¼ Section</i>	<i>Legal Subdivision</i>	<i>Percent Reduction</i>
78174	30	SE	00	1.00%
78174	30	SW	00	75.00%
78184	25	SW	00	68.75%
78184	25	SE	00	68.75%
78184	25	NW	00	68.75%
78184	25	NE	00	68.75%
79144	18	NE	00	5.16%
83164	17	NW	00	23.31%
83164	18	NE	16	5.88%
83164	18	NE	10	5.88%
83164	18	NE	09	6.00%
83164	18	NE	15	6.00%
83164	19	SE	00	75.00%

Timber Zone 6 (FMU L11)

<i>Township</i>	<i>Section</i>	<i>¼ Section</i>	<i>Legal Subdivision</i>	<i>Percent Reduction</i>
7354	19	SW	00	7.50%
7354	19	SE	00	7.50%
7354	19	NW	00	7.50%
7354	19	NE	00	7.50%
7354	20	SW	00	5.00%
7354	20	SE	00	5.00%
7354	20	NW	00	5.00%
7354	20	NE	00	5.00%
7354	24	SW	00	10.00%
7354	24	SE	00	10.00%
7354	24	NW	00	10.00%
7354	24	NE	00	10.00%
7354	25	SW	00	1.00%
7354	25	SE	00	1.00%
7354	25	NW	00	1.00%
7354	25	NE	00	1.00%
7354	26	SW	00	18.75%
7354	26	SE	00	18.75%
7354	26	NW	00	18.75%
7354	26	NE	00	18.75%
7354	27	SW	00	5.00%
7354	27	SE	00	5.00%
7354	27	NW	00	5.00%
7354	27	NE	00	5.00%
7354	28	SW	00	7.50%
7354	28	SE	00	7.50%
7354	28	NW	00	7.50%
7354	28	NE	00	7.50%
7354	29	SW	00	13.75%
7354	29	SE	00	13.75%
7354	29	NW	00	13.75%
7354	29	NE	00	13.75%
7354	30	SW	00	18.75%
7354	30	SE	00	18.75%
7354	30	NW	00	18.75%
7354	30	NE	00	18.75%
7354	32	SW	00	7.50%
7354	32	SE	00	7.50%
7354	32	NW	00	7.50%
7354	32	NE	00	7.50%
7684	4	SW	00	2.18%
7684	4	SE	00	2.18%
7684	4	NW	00	2.18%
7684	4	NE	00	2.18%
7684	5	SW	00	5.78%
7684	5	SE	00	5.78%
7684	5	NW	00	5.78%
7684	5	NE	00	5.78%
7684	8	SW	00	7.65%
7684	8	SE	00	7.65%
7684	8	NW	00	7.65%

Landbase Determination (v3.0) - Appendices

<i>Township</i>	<i>Section</i>	<i>¼ Section</i>	<i>Legal Subdivision</i>	<i>Percent Reduction</i>
7684	8	NE	00	7.65%
7684	16	SW	00	6.19%
7684	16	SE	00	6.19%
7684	16	NW	00	6.19%
7684	16	NE	00	6.19%
7684	17	SW	00	3.80%
7684	17	SE	00	3.80%
7684	17	NW	00	3.80%
7684	17	NE	00	3.80%
7684	21	SW	00	3.59%
7684	21	SE	00	3.59%
7684	21	NW	00	3.59%
7684	21	NE	00	3.59%
7684	22	SW	00	9.50%
7684	22	SE	00	9.50%
7684	22	NW	00	9.50%
7684	22	NE	00	9.50%
7684	25	SW	00	8.00%
7684	25	SE	00	8.00%
7684	25	NW	00	8.00%
7684	25	NE	00	8.00%
7684	26	SW	00	8.24%
7684	26	SE	00	8.24%
7684	26	NW	00	8.24%
7684	26	NE	00	8.24%
7684	27	SW	00	3.41%
7684	27	SE	00	3.41%
7684	27	NW	00	3.41%
7684	27	NE	00	3.41%
7784	1	NW	00	4.46%
7784	1	NE	09	4.46%
7784	1	NE	10	4.46%
7784	1	NE	15	4.46%
7784	12	SW	00	7.57%
7784	12	SE	00	7.57%
7784	12	NW	00	7.57%
7784	12	NE	00	7.57%
7784	13	SW	00	7.56%
7784	13	SE	00	7.56%
7784	13	NW	00	7.56%
7784	13	NE	00	7.56%
7784	24	SW	00	7.91%
7784	24	SE	00	7.91%
7784	24	NW	00	7.91%
7784	24	NE	00	7.91%
7784	25	SW	00	42.53%
7784	25	SE	00	42.53%
7784	25	NW	00	42.53%
7784	25	NE	00	42.53%
7784	36	SW	00	8.10%
7784	36	SE	00	8.10%
7784	36	NW	00	8.10%
7784	36	NE	00	8.10%
7944	30	SW	00	1.00%
7944	30	SE	00	1.00%

Landbase Determination (v3.0) - Appendices

<i>Township</i>	<i>Section</i>	<i>¼ Section</i>	<i>Legal Subdivision</i>	<i>Percent Reduction</i>
7944	30	NW	00	1.00%
7944	30	NE	00	1.00%
7944	31	SW	00	1.00%
7944	31	SE	00	1.00%
7944	31	NW	00	1.00%
7944	31	NE	00	1.00%

Timber Zone 7 (FMU S18)

<i>Township</i>	<i>Section</i>	<i>¼ Section</i>	<i>Legal Subdivision</i>	<i>Percent Reduction</i>
78224	16	SW	00	25.00%
78224	16	SE	00	25.00%
78224	16	NW	00	25.00%
78224	16	NE	00	25.00%
78224	17	SW	00	26.56%
78224	17	SE	00	26.56%
78224	17	NW	00	26.56%
78224	17	NE	00	26.56%

Timber Zone 8 (FMU A14)

<i>Township</i>	<i>Section</i>	<i>¼ Section</i>	<i>Legal Subdivision</i>	<i>Percent Reduction</i>
8884	13	SW	00	3.48%
8884	13	SE	00	3.48%
8884	13	NW	00	3.48%
8884	13	NE	00	3.48%
8884	19	SE	00	2.38%
8884	19	NE	00	2.41%
8884	20	NE	00	100.00%
8884	5	NE	00	100.00%
8884	20	NW	00	50.00%
8884	22	NE	16	1.58%
8884	22	NE	15	1.58%
8884	22	NE	09	1.58%
8884	22	NE	10	1.58%
8884	23	SW	00	8.95%
8884	23	SE	00	8.95%
8884	23	NW	00	8.95%
8884	23	NE	00	8.95%
8884	24	SW	00	6.41%
8884	24	SE	00	6.41%
8884	24	NW	00	6.41%
8884	24	NE	00	6.41%
8884	25	SE	00	93.94%
8884	25	NW	00	14.34%
8884	25	NE	00	2.33%
8884	26	NW	00	35.14%
8884	26	NE	00	27.13%
8884	27	SE	00	20.07%
8884	27	SW	00	4.13%
8884	27	NW	00	1.24%
8884	27	NE	00	31.14%
8884	28	SE	00	3.84%
8884	28	SW	00	4.78%
8884	29	SE	00	0.74%
8884	29	Sw	00	1.00%
8884	29	NE	00	1.28%
8884	31	NW	00	10.38%
8884	31	NE	00	74.25%
8884	32	NW	00	37.13%
8894	10	SW	00	5.30%
8894	10	SE	00	5.30%
8894	10	NW	00	5.30%
8894	10	NE	00	5.30%
8894	22	SE	00	8.96%
8894	22	SW	00	18.75%
8894	22	NW	00	14.02%
8894	22	NE	00	35.24%
8894	26	SE	00	31.96%
8894	25	SW	00	7.50%
8894	25	NE	00	5.63%
8894	26	NE	00	12.63%
8894	27	SE	00	27.39%

Landbase Determination (v3.0) - Appendices

<i>Township</i>	<i>Section</i>	<i>¼ Section</i>	<i>Legal Subdivision</i>	<i>Percent Reduction</i>
8894	27	SW	00	0.63%
8894	27	NW	00	58.67%
8894	34	SW	00	72.48%
8894	34	NW	00	32.39%
8894	34	NE	00	85.02%
8894	35	SE	00	0.26%
8894	35	SW	00	75.80%
8894	35	NW	00	7.14%
8894	36	SW	00	1.00%
8894	36	SE	00	1.00%
8894	36	NW	00	1.00%
8894	36	NE	00	1.00%
8894	1	SW	00	1.00%
8994	1	SE	00	27.50%
8994	1	SW	00	3.09%
8994	1	NW	00	18.75%
8994	2	NE	00	25.00%
8994	4	SW	00	9.38%
8994	4	NW	00	10.00%
8994	4	NE	00	34.24%
8994	11	SE	00	26.50%
8994	14	SW	00	89.75%
8994	15	SE	00	87.50%
8994	17	SW	00	100.00%
8994	17	SE	00	100.00%
8994	17	NW	00	100.00%
8994	17	NE	00	100.00%
8994	4	SW	00	100.00%
8994	4	SE	00	100.00%
8994	4	NW	00	100.00%
8994	4	NE	00	100.00%
8994	15	NW	00	16.06%
8994	18	SW	00	1.88%
8994	22	SW	00	14.38%
8794	1	SW	03	50.00%
8794	1	SW	04	50.00%
8794	1	SW	05	50.00%
8794	1	SW	06	50.00%
8794	1	NW	11	50.00%
8794	1	NW	12	50.00%
8794	1	NW	13	50.00%
8794	1	NW	14	50.00%
8794	1	NE	00	12.94%

Timber Zone 9 (FMU S11)

<i>Township</i>	<i>Section</i>	<i>¼ Section</i>	<i>Legal Subdivision</i>	<i>Percent Reduction</i>
No Private Land Identified				

Timber Zone 10 (FMUs S12 & S13)

<i>Township</i>	<i>Section</i>	<i>¼ Section</i>	<i>Legal Subdivision</i>	<i>Percent Reduction</i>
83224	6	SW	00	1.00%
83224	6	SE	00	1.00%
83224	6	NW	00	1.00%
83224	6	NE	00	1.00%

Timber Zone 11 (FMUs A4, A5, A7 & A8)

<i>Township</i>	<i>Section</i>	<i>¼ Section</i>	<i>Legal Subdivision</i>	<i>Percent Reduction</i>
9194	8	NW	00	52.19%
9194	8	NE	00	31.69%
9194	9	NW	00	43.75%
9194	9	NE	00	56.06%
9194	10	NW	00	68.31%
9194	10	NE	00	80.56%
9194	14	SW	00	56.44%
9194	14	NW	00	5.19%
9194	15	NW	00	30.13%
9194	15	NE	00	17.75%
9194	16	NW	00	54.75%
9194	16	NE	00	42.44%
9194	17	SW	00	1.00%
9194	17	SE	00	1.00%
9194	17	NW	00	1.00%
9194	17	NE	00	1.00%
9194	14	SW	00	1.00%
9194	14	SE	00	1.00%
9194	14	NW	00	1.00%
9194	14	NE	00	1.00%
9194	17	SW	00	1.00%
9194	17	SE	00	1.00%
9194	17	NW	00	1.00%
9194	17	NE	00	1.00%
9194	15	SW	00	1.00%
9194	15	SE	00	1.00%
9194	15	NW	00	1.00%
9194	15	NE	00	1.00%
9194	17	SW	00	1.00%
9194	17	SE	00	1.00%
9194	17	NW	00	1.00%
9194	17	NE	00	1.00%
9194	16	SW	00	1.00%
9194	16	SE	00	1.00%
9194	16	NW	00	1.00%
9194	16	NE	00	1.00%
9194	31	NE	00	72.50%
9194	32	NW	00	1.69%
91104	11	NW	00	1.00%
9094	6	NW	00	1.08%
9094	8	SW	00	25.88%
9094	8	NW	00	28.63%
9294	4	NW	00	75.00%
9294	4	NE	00	25.00%
9294	5	SE	00	37.50%
9294	5	SW	00	90.63%
9294	6	SE	00	96.88%
9294	6	SW	00	25.00%
9294	6	NW	00	25.00%
9294	6	NE	00	87.50%
9294	7	SE	00	9.38%

Landbase Determination (v3.0) - Appendices

<i>Township</i>	<i>Section</i>	<i>¼ Section</i>	<i>Legal Subdivision</i>	<i>Percent Reduction</i>
9294	7	NW	00	6.25%
9294	8	SE	00	96.88%
9294	8	SW	00	50.00%
9294	8	NE	00	12.50%
9294	9	SE	00	100.00%
9294	9	NW	00	56.25%
9294	9	NE	00	100.00%
9294	10	SW	00	56.25%
9294	10	NW	00	37.50%
9294	16	SE	00	12.50%
9294	18	SW	00	93.75%
9294	19	SE	00	37.50%
9294	19	NE	00	62.50%
9294	19	NW	00	100.00%
9294	20	NW	00	43.75%
9294	28	NW	00	12.50%
9294	29	SE	00	12.50%
9294	29	SW	00	68.75%
9294	29	NE	00	75.00%
9294	30	SW	00	96.88%
9294	30	NW	00	37.50%
9294	30	NE	00	93.75%
9294	31	SE	00	37.50%
9294	32	SW	00	93.75%
9294	32	NW	00	31.25%
9294	32	NE	00	93.75%
9294	33	SE	00	12.50%
9294	33	SW	00	75.00%
9294	33	NW	00	81.25%
9294	33	NE	00	37.50%
92104	9	SE	00	0.06%
92104	9	NE	00	12.81%
92104	10	SE	00	0.69%
92104	10	SW	00	0.81%
92104	11	SE	00	0.38%
92104	11	SW	00	0.56%
92104	12	SE	00	1.00%
92104	12	SW	00	0.25%
92104	16	SE	00	100.00%
92104	25	SW	00	1.00%
92104	25	SE	00	1.00%
92104	25	NW	00	1.00%
92104	25	NE	00	1.00%
92104	1	SW	00	1.00%
92104	1	SE	00	1.00%
92104	1	NW	00	1.00%
92104	1	NE	00	1.00%
92104	25	SW	00	1.00%
92104	25	SE	00	1.00%
92104	25	NW	00	1.00%
92104	25	NE	00	1.00%
92104	8	SW	00	1.00%
92104	8	SE	00	1.00%
92104	8	NW	00	1.00%
92104	8	NE	00	1.00%

Landbase Determination (v3.0) - Appendices

<i>Township</i>	<i>Section</i>	<i>¼ Section</i>	<i>Legal Subdivision</i>	<i>Percent Reduction</i>
92104	25	NW	00	25.38%
92104	35	SE	00	20.69%
8994	1	SE	00	27.50%
8994	1	SW	00	3.09%
8994	1	NW	00	18.75%
8994	2	NE	00	25.00%
8994	4	SW	00	9.38%
8994	4	NW	00	10.00%
8994	4	NE	00	34.24%
8994	11	SE	00	26.50%
8994	14	SW	00	89.75%
8994	15	SE	00	87.50%
8994	17	SW	00	100.00%
8994	17	SE	00	100.00%
8994	17	NW	00	100.00%
8994	17	NE	00	100.00%
8994	4	SW	00	100.00%
8994	4	SE	00	100.00%
8994	4	NW	00	100.00%
8994	4	NE	00	100.00%
8994	15	NW	00	16.06%
8994	18	SW	00	1.88%
8994	22	SW	00	14.38%
89104	12	SE	00	0.44%
89104	12	NW	00	43.75%
89104	12	NE	00	5.63%
89104	14	SE	00	3.75%
89104	23	SE	00	2.50%
89104	23	NE	00	100.00%
89104	26	SW	00	17.34%
9394	5	SE	00	12.50%
94104	31	SW	00	1.00%
94104	31	SE	00	1.00%
94104	31	NW	00	1.00%
94104	31	NE	00	1.00%
94114	23	SE	00	50.00%
94114	23	SW	00	50.00%
94114	23	NW	00	50.00%
94114	24	SW	00	100.00%
94114	25	NE	00	1.25%
94114	26	SW	00	12.50%
94114	35	NW	00	100.00%
94114	36	SE	00	1.00%
95104	6	SE	00	100.00%
97114	1	SW	00	30.00%
97114	1	SE	00	30.00%
97114	1	NW	00	30.00%
97114	1	NE	00	30.00%



**ALBERTA
PACIFIC**

FOREST INDUSTRIES INC

Appendix IV : Protective Notations

Timber Zone 1 (FMU S7)

Summary of PNTs and associated harvest status.

<i>PNT</i>	<i>Status</i>	<i>Comments</i>	<i>Area (ha)</i>
PNT000050	Maybe (Y)	Agency permission needed	16.8
PNT000211	Yes		670
PNT700034	Yes		4456
PNT700119		No info	
PNT710887	Yes		4656
PNT710888	Yes		7675
PNT710891	Yes		7448
PNT710922	Yes		11,815.50
PNT753508	Yes		?
PNT764167	Yes		?
PNT764242	Yes		?
PNT764244	Yes		?
PNT775805	Yes		?
PNT775866	Yes		129.5
PNT776114	Yes		?
PNT776304	Yes		129
PNT780179	Yes		?
PNT790250	Yes		?
PNT790442	Yes	Public wood cutting area	?
PNT800855	Yes		?
PNT810603	Yes		?
PNT820005	Yes		48.4
PNT820084	Yes		?
PNT820221	Yes		?
PNT820652	Yes		?
PNT830438	Yes	Public wood cutting area	?
PNT840283	Yes		319
PNT840300	Yes		?
PNT840316	Yes		?
PNT840622	Yes		246
PNT850199	Yes		?
PNT850283	Yes		?
PNT850569	Yes		
PNT870531	Yes		?
PNT910205	Yes		518
PNT920390	Yes		1243
PNT920392	Yes		584.4

Summary of PNTs and associated harvest status. (Continued)

<i>PNT</i>	<i>Status</i>	<i>Comments</i>	<i>Area (ha)</i>
PNT920393	Yes		458.5
PNT920394	Yes		129.5
PNT940222	Maybe (Y)	Agency permission required Industrial ok	32.37
PNT940272	Yes		?
PNT950081	Yes		?
PNT950193	Yes		?
PNT970091	Yes		1343
PNT980084	Yes		?
PNT990156	Yes		?

Summary of land area associated with PNTs having a 'No' or 'Maybe No' harvest status.

<i>PNT</i>	<i>Quarter Section</i>	<i>PNT</i>	<i>Quarter Section</i>	<i>PNT</i>	<i>Quarter Section</i>
None of the PNTs identified prohibit timber harvesting.					

Timber Zone 2 (FMU L8)

Summary of PNTs and associated harvest status.

<i>PNT</i>	<i>Status</i>	<i>Comments</i>	<i>Area (ha)</i>
PNT740040	Yes		520
PNT775500	Yes		339
PNT776303	Yes		268
PNT810310	Yes		64
PNT810537	Yes		259
PNT830338	Yes		
PNT840319	Yes		114
PNT840626	Yes		
PNT870826	Yes		451.24
PNT870856	Yes		114
PNT890028	Yes		267
PNT890161	Yes		
PNT890612	Maybe(N)	Agency permission needed Industrial ok	403
PNT890676	Maybe (N)	Agency Permission needed Industrial ok	149.85
PNT900470	No	Historical site	
PNT910111	Yes		
PNT920076	No	Seed Production area	12.4
PNT920077	No	Seed Production area	15.4
PNT920101	Maybe (Y)	Agency permission required oil and gas ok	30.25
PNT920102	Maybe (Y)	Agency permission required oil and gas ok	21
PNT930135	Yes		
PNT930243	No		

Summary of land area associated with PNTs having a 'No' or 'Maybe No' harvest status.

<i>PNT</i>	<i>Quarter Section</i>	<i>PNT</i>	<i>Quarter Section</i>	<i>PNT</i>	<i>Quarter Section</i>
PNT890612	407218013	PNT890676	407214191	PNT930135	407316311
	407218104		407214193		407316312
PNT890612	407218122		407214194		407316313
	407218123		407214301		407316314
	407218124	PNT900470	407019301		407317361
	407218131	PNT910111	407119352		407317364
	407218132	PNT920076	407215063		407416052
	407218134		407215064		407416061
		PNT920077	407214304		407416062
		PNT920101	407214174	PNT930243	407019323
			407214201		
		PNT920102	407215034		

Timber Zone 3 (FMU L1)

Summary of PNTs and associated harvest status.

<i>PNT</i>	<i>Status</i>	<i>Comments</i>	<i>Area (ha)</i>
PNT000142	Yes	IN L01 - White Zone	61.7
PNT000144	No	IN L2J not L1	0
PNT610008	Yes		64.7
PNT712258	Yes		40
PNT750003	Yes		275
PNT750004	Yes		720
PNT760061	Yes		1088
PNT764583	Yes		381
PNT764639	Yes		194
PNT780113	Maybe (N)	Industrial/Residential/Commercial only	64.7
PNT820043	Yes		15
PNT830596	Yes		283
PNT831183	Yes		291
PNT840406	Yes		164
PNT850062	Yes		259
PNT860132	Yes		194
PNT870272	Yes		906
PNT880474	Maybe(N)	Agency permission needed Commercial//r ok	64.7
PNT880475	Yes		130.7
PNT890606	Maybe (N)	Agency permission needed Industrial ok	?
PNT890609	Maybe (N)	Agency permission needed Industrial ok	539
PNT890614	Maybe (N)	Agency Permission needed Industrial ok	?
PNT890678	Maybe (N)	Agency permission needed Industrial ok	366.5
PNT890683	Maybe N)	Agency permission needed oil and gas ok	1456.8
PNT920096	Maybe (Y)	Agency permission needed oil and gas ok	17.6
PNT920161	Yes		104.9
PNT930124	Yes		680
PNT940062	Maybe (Y)	Agency permission required Industrial Ok	1097.66
PNT970157	Yes		64.7
PNT970180	Yes		129.5
PNT970181	Yes		64.7
PNT980027	Yes		64.7
PNT980028	Yes		64.7
PNT980030	Yes		35.1
PNT980031	Yes		29.6
PNT990036	Yes		64.7
PNT990037	Yes		64.7
PNT990135	Maybe (N)	Agency Permission required	18.6

Summary of land area associated with PNTs having a ‘No’ or ‘Maybe No’ harvest status.

<i>PNT</i>	<i>Quarter Section</i>	<i>PNT</i>	<i>Quarter Section</i>	<i>PNT</i>	<i>Quarter Section</i>
PNT000144	407312212	PNT890606	407211251	PNT890683	407111333
PNT780113	406911304		407211254		407111334
PNT880474	406811062		407211361		407211041
PNT890609	406910293		407211362		407211042
	406910294		407211363		407211043
	406910303		407211364		407211044
	406910304	PNT890614	407309073		407211051
	406910331		407309182		407211052
	406910332		407309183		407211053
	406910333	PNT890678	407111161		407211054
	406910334		407111162		407211081
	406910343		407111163		407211082
	407010031		407111164		407211083
	407010034		407111211		407211084
	407010101		407111212		407211092
	407010104		407111213		407211093
	407010112		407111214		407211152
	407010113	PNT990135	407313272		407211153
			407313273		407211161
			407313281		407211162
			407313284		407211163
					407211164
					407211171
					407211201
					407211202
					407211203
					407211204
					407211213
					407211214
					407211291
					407211292

Timber Zone 4 (FMU L2)

Summary of PNTs and associated harvest status.

<i>PNT</i>	<i>Status</i>	<i>Comments</i>	<i>Area (ha)</i>
PNT010044	Yes		906
PNT010360	Maybe (Y)	Agency permission needed	11.4
PNT650007	Yes		2590
PNT650035	Yes		7770
PNT800811	Yes		13749
PNT810615	Yes		1626
PNT810619	Yes		643
PNT830045	Yes		1425
PNT830338	Yes		4465
PNT830477	Yes		964
PNT850569	Yes		429
PNT890161	Yes		160
PNT900455	Yes		352.9
PNT900470	No	Historical site	35.2
PNT910075	Yes		516
PNT910095	Yes		0
PNT910111	Yes		12.14
PNT910122	Maybe (N)	Agency permission required	?
PNT910335	Maybe (N)	Agency permission required Industrial ok	?
PNT920078	No	Seed Production area	13.6
PNT920093	Maybe (Y)	Agency permission needed oil and gas ok	26.4
PNT920098	Maybe (Y)	Agency permission needed oil and gas ok	29
PNT920099	Maybe (Y)	Agency permission required oil and gas ok	45
PNT920160	Maybe (Y)	Agency permission required	10.27
PNT920221	Maybe (N)	Agency permission required PSP	2.25
PNT930243	No		140.5
PNT980171	Maybe (N)	Agency Permission required Historical Site	44.5
PNT990001	Yes		24.2

Summary of land area associated with PNTs having a ‘No’ or ‘Maybe No’ harvest status.

<i>PNT</i>	<i>Quarter Section</i>	<i>PNT</i>	<i>Quarter Section</i>	<i>PNT</i>	<i>Quarter Section</i>
PNT900470	407019301	PNT920078	407623132		
PNT910335	407122331		407623141		
	407222051	PNT930243	407019323		
	407222082	PNT980171	407123063		
	407223124				
	407223131				
	407223132				
	407223133				
	407223144				
	407223231				
	407223234				
	407223243				
	407223261				
	407223264				
	407223351				
	407223353				
	407223354				
	407322033				
	407322042				
	407322043				
	407322044				
	407322051				
	407322052				
	407322053				
	407322063				
	407322064				
	407322101				
	407323011				
	407323012				
	407323013				
	407323014				
	407323021				
	407323022				
	407323024				

Timber Zone 5 (FMU L3)

Summary of PNTs and associated harvest status.

<i>PNT</i>	<i>Status</i>	<i>Comments</i>	<i>Area (ha)</i>
PNT742878	Yes		259
PNT742941	Yes		323.7
PNT750045	Yes		389.5
PNT770039	Yes		32.4
PNT780070	Yes		32.3
PNT780890	Yes		226
PNT782940	Yes		275
PNT840008	Yes		4257
PNT840626	Yes		4338
PNT860103	Yes		64
PNT860277	Yes		259
PNT880186	No	Boivin natural area	15.5
PNT880187	No	Boivin natural area	2793
PNT890611	Maybe (N)	Agency permission needed Industrial ok	132
PNT890677	Maybe (N)	Agency Permission needed Industrial ok	604.75
PNT920100	Maybe (Y)	Agency permission required oil and gas ok	23.5
PNT920103	Maybe (Y)	Agency permission required oil and gas ok	25.95
PNT920118	Maybe (Y)	Agency permission required	13.6
PNT920119	Maybe (Y)	Agency permission required	16.1
PNT920157	Maybe (Y)	Agency permission required	4
PNT930135	Yes		806.8
PNT940165	Yes		64.7

Summary of land area associated with PNTs having a 'No' or 'Maybe No' harvest status.

<i>PNT</i>	<i>Quarter Section</i>	<i>PNT</i>	<i>Quarter Section</i>	<i>PNT</i>	<i>Quarter Section</i>
PNT880186	407916071	PNT880187	407917243		
	407916072		407917244		
	407916073		407917251		
	407916074		407917252		
	407916181		407917253		
PNT880186	407916182		407917254		
	407916183		407917261		
	407916184		407917262		
	407916191		407917263		
	407916192		407917264		
	407916193		407917271		
	407916194		407917273		
	407916301		407917274		
	407916302		407917351		
	407916303		407917352		
407916304		407917353			

<i>PNT</i>	<i>Quarter Section</i>	<i>PNT</i>	<i>Quarter Section</i>	<i>PNT</i>	<i>Quarter Section</i>
	407917111		407917354		
	407917112		407917361		
	407917113		407917362		
	407917114		407917363		
	407917121		407917364		
	407917122	PNT890611	407418132		
	407917123		407418133		
	407917124		407418141		
	407916311		407418144		
	407916312	PNT890677	407717311		
	407916313		407717312		
	407916314		407717313		
	407917131		407717314		
	407917132		407717323		
	407917133		407717324		
	407917134				
	407917141				
	407917142				
	407917143				
	407917144				
	407917151				
	407917154				
	407917221				
	407917224				
	407917231				
	407917232				
	407917233				
	407917234				
	407917241				
	407917242				

Timber Zone 6 (FMU L11)

Summary of PNTs and associated harvest status.

<i>PNT</i>	<i>Status</i>	<i>Comments</i>	<i>Area (ha)</i>
PNT000117	No	Conklin Hamlet	518
PNT880489	Yes		?
PNT890605	Yes		?
PNT890674	Maybe (N)	Agency permission needed Industrial ok	609.4
PNT880489	Yes		?
PNT890262	Yes		64.7
PNT890605	Yes		?
PNT890608	Maybe (N)	Agency permission needed Industrial ok	?
PNT910116	Maybe (N)	Agency permission required	?
PNT910119	Maybe (N)	Agency permission required	?
PNT920094	Maybe (Y)	Agency permission needed oil and gas ok	21.2
PNT930128	Yes		64.7
PNT860088	Yes		8
PNT860164	Yes		63
PNT890247	No		215
PNT910117	Maybe (N)	Agency permission required	2668.6
PNT920095	Maybe (Y)	Agency permission needed oil and gas ok	16.7
PNT920097	Maybe (Y)	Agency permission needed oil and gas ok	25.8
PNT970309	Yes		960

Summary of land area associated with PNTs having a 'No' or 'Maybe No' harvest status.

<i>NT</i>	<i>Quarter Section</i>	<i>PNT</i>	<i>Quarter Section</i>	<i>PNT</i>	<i>Quarter Section</i>
PNT000117	407608354	PNT910117	407903293	PNT910119	407403191
	407708021		407903301		407403192
	407708022		407903302		407403193
	407708023		407903303		407403194
	407708024		407903304		407403202
	407708111		407903311		407403203
	407708112		407903312		407403204
	407708114		407903313		407403291
PNT890247	408306084	407903314	407403292		
	408306162	407903321	407403293		
	408306163	407903322	407403294		
	408306171	407903324	407403322		
	408306172	407903332	407403323		
PNT890608	407305243	407903333	407404224		
	407305244	407903334	407404233		
	407305251	407904254	407404234		
	407305252	407904361	407404243		
	407305253	407904363	407404244		
	407305254	407904364	407404251		
	407305261	408003032	407404252		

<i>NT</i>	<i>Quarter Section</i>	<i>PNT</i>	<i>Quarter Section</i>	<i>PNT</i>	<i>Quarter Section</i>
	407305264		408003033		407404261
PNT890674	407712053		408003041		407404262
	407712054		408003042		407404271
	407712061		408003043		407404272
	407712062		408003051		407404273
	407712063		408003052		407404274
	407712064		408003053		407404311
	407712071		408003054		407404312
	407712072		408003071		407404313
	407712081		408003072		407404314
	407712082		408003074		407404321
	407713011		408003081		407404323
	407713014		408003082		407404324
PNT910116	407303303		408003083		407404331
	407303304		408003084		407404332
	407303311		408003091		407404333
	407303312		408003092		407404342
	407303314		408003093		407405361
	407304253		408003094		407405362
	407304254		408003102		407405363
	407304362		408003152		407405364
	407304363		408003153		407503052
	407403052		408003154		407503053
	407403053		408003161		407503054
	407403061		408003162		407503081
	407403064		408003163		407503082
PNT910116	407403071	PNT910117	408003164		407503083
	407403072		408003171		407503084
	407403073		408003174		407503172
	407404012		408003211		407503181
	407404021		408003214		407503182
	407404024		408003221		407504131
	407404111		408003222		407504133
	407404114		408003224		407504134
	407404121		408003271		407504181
	407404122		408003272		407504182
	407404123		408003281		407504183
	407404124		408004011		407504184
	407404132		408004012		407504193
	407404141		408004013		407504233
PNT980188	408407104		408004014		407504234
			408004121		407504242
		PNT910119	407604042		407504243
			407604043		407504262
			407604051		407504263
			407604054		407504274

<i>NT</i>	<i>Quarter Section</i>	<i>PNT</i>	<i>Quarter Section</i>	<i>PNT</i>	<i>Quarter Section</i>
			407604091		407504293
			407604092		407504301
			407604093		407504302
			407604094		407504304
			407604103		407504321
			407604104		407504322
			407604111		407504324
			407604112		407504333
			407604113		407504341
			407604121		407504352
			407604122		407504353
			407604123		407505011
			407604124		407505012
			407604131		407505013
			407604132		407505014
			407604133		407505122
			407604142		407505123
			407604143		407505132
			407604144		407505133
			407604024		407505241
			407604034		407505242
					407505244
					407604022
					407604023

Timber Zone 7 (FMU S18)

Summary of PNTs and associated harvest status.

<i>PNT</i>	<i>Status</i>	<i>Comments</i>	<i>Area (ha)</i>
PNT753874	Yes		?
PNT765169	Yes		?
PNT775919	Yes		259
PNT790399	Yes	Public wood cutting area	?
PNT820032	Yes		?
PNT860053	No	Poss rec site	?
PNT860202	Yes		?
PNT880001	Maybe (Y)	Seed Source	?
PNT910419	No	Oil and gas recreation only	?
PNT940356	Yes		2525.3

Summary of land area associated with PNTs having a 'No' or 'Maybe No' harvest status.

<i>PNT</i>	<i>Quarter Section</i>	<i>PNT</i>	<i>Quarter Section</i>	<i>PNT</i>	<i>Quarter Section</i>
PNT910419	407924203	PNT910419	408126101	PNT860053	408126022
	407924204		408126104		408126031
	407924213		408126221		408126034
	407924214		408126224		408126151
	407924223		408126271		408126154
	407924233		408126274		
	407924262		408126341		
	407924271		408126352		
	407924272		408126353		
	407924301		408225203		
	407924304		408225204		
	407924311		408225291		
	407924312		408225292		
	407925253		408225301		
	407925263		408225302		
	407925264		408225303		
	407925361		408225304		
	408024021		408226022		
	408024022		408226023		
	408024031		408226024		
	408024032		408226111		
	408024041		408226114		
	408024042		408226133		
	408024043		408226141		
	408024081		408226242		
	408024083		408226244		
	408024084		408226254		
	408024092				
	408024172				

Timber Zone 8 (FMU A14)

Summary of PNTs and associated harvest status.

<i>PNT</i>	<i>Status</i>	<i>Comments</i>	<i>Area (ha)</i>
PNT000025	Maybe (Y)	Flight path protection	2.84
PNT000204	Maybe (Y)	Agency permission needed	275
PNT010016	No	Industrial only	129.5
PNT010193	Yes		62.5
PNT010261	No	Industrial Allowed	60.5
PNT020011	No		0.91
PNT020101	Yes	Public wood cutting area	987
PNT700304	Yes		250
PNT710477	Yes		64.75
PNT732717	Yes		226
PNT740001	Yes		49.3
PNT742815	Yes		1019
PNT743016	Yes		437.1
PNT743189	Maybe (N)	Agency permission needed Silv Plots	64.7
PNT760002	Yes		36.4
PNT760008	Yes		72.8
PNT760013	Yes		105
PNT764285	Yes	Public wood cutting area	259
PNT780071	Yes		106
PNT780876	Yes		647
PNT801050	Maybe (N)	Agency permission needed/Commercial//r ok	44.7
PNT820711	Yes		430
PNT830379	Yes	Public wood cutting area	259
PNT860278	Yes		24
PNT860605	Yes		64.7
PNT870882	Maybe (Y)	Lookout site	89
PNT890215	Yes		268
PNT890311	Yes		0
PNT890462	Maybe (N)	Agency permission needed Industrial ok	183.72
PNT890701	No	Industrial only ok	1127
PNT900137	Yes		511.5
PNT900149	Maybe (Y)	Agency permission needed	189.75
PNT900332	Maybe (N)	Agency permission needed	16.2
PNT910206	Maybe (N)	Agency permission required oil and gas ok	1404
PNT910283	No		129.5
PNT930371	No	Dog Lots	?
PNT940317	Yes		37
PNT950262	Maybe (Y)	Agency Permission required	41.25
PNT960073	No	provincial Park	911
PNT980017	Maybe (N)	Agency permission required	78.87
PNT980130	Maybe (N)	Agency Permission required PSP	0.04
PNT980183	Maybe (N)	Agency Permission required PSP	0.04
PNT000025	Maybe (Y)	Flight path protection	2.84

Summary of land area associated with PNTs having a ‘No’ or ‘Maybe No’ harvest status.

<i>PNT</i>	<i>Quarter Section</i>	<i>PNT</i>	<i>Quarter Section</i>	<i>PNT</i>	<i>Quarter Section</i>
PNT010261	408607054	PNT020011	408809224	PNT743189	408508323
PNT010016	408808301		408809271		408508324
	408808302		408809272		408608052
PNT801050	408608101	PNT890462	408509132	PNT890701	408508323
	408608113		408509133		408508324
PNT900332	408807281		408509134		408608052
PNT910206	408807283	PNT910283	408809362	PNT930371	408809234
PNT960073	408607172	PNT980017	408709351		408809243
	408607173		408709353	PNT980130	408715141
	408607181		408709354	PNT980183	408908121
	408607182		408808153		
	408607183		408808164		
	408607184		408808173		
	408607191		408808202		
	408607192				
	408607193				
	408607194				
	408608133				
	408608134				
	408608251				
	408608252				
	408608253				
	408608254				

Timber Zone 9 (FMU S11)

Summary of PNTs and associated harvest status.

<i>PNT</i>	<i>Status</i>	<i>Comments</i>	<i>Area (ha)</i>
PNT010374	No	No info	20
PNT920198	No	No info	20

Summary of land area associated with PNTs having a 'No' or 'Maybe No' harvest status.

<i>NT</i>	<i>Quarter Section</i>	<i>PNT</i>	<i>Quarter Section</i>	<i>PNT</i>	<i>Quarter Section</i>
PNT010374	508804283	PNT920198	508704204		

Timber Zone 10 (FMUs S12 & S13)

Summary of PNTs and associated harvest status.

<i>PNT</i>	<i>Status</i>	<i>Comments</i>	<i>Area (ha)</i>
PNT010209	Yes		133
PNT890648	No		65.4
PNT970306	No	recreation and industrial only	388.512
PNT890625	Yes		712.25
PNT910418	No	Oil and gas recreation only	119.79
PNT950073	Yes	Archeological site	64.7

Summary of land area associated with PNTs having a 'No' or 'Maybe No' harvest status.

<i>NT</i>	<i>Quarter Section</i>	<i>PNT</i>	<i>Quarter Section</i>	<i>PNT</i>	<i>Quarter Section</i>
PNT890648	408322052	PNT910418	409221073	PNT970306	408425011
	408322062		409221182		408425014
	408322063		409221183		
			409222054		
			409222081		
			409222092		
			409222094		
			409222103		
			409222121		
			409222122		
			409222123		
			409222124		
			409222131		
			409222132		
	409222133				
	409222134				

Timber Zone 11 (FMUs A4, A5, A7 & A8)

Summary of PNTs and associated harvest status.

<i>PNT</i>	<i>Status</i>	<i>Comments</i>	<i>Area (ha)</i>
PNT980191	Maybe (N)	Agency Permission required PSP	0.04
PNT000214	Maybe (N)	Agency permission needed (Research Plot)	1.2
PNT660001	Yes		76.1
PNT710038	Yes		194
PNT742922	Yes		185
PNT860185	Maybe (Y)	Agency permission needed/Commercial//r ok	275
PNT860186	Maybe (Y)	Agency permission needed/Commercial//r ok	1092
PNT870118	Yes		4402
PNT870360	No	Horse holding area	114.5
PNT910144	No		16.188
PNT950266	Maybe (Y)	Agency Permission required	56.6
PNT980126	Maybe (N)	Agency Permission required PSP	0.04
PNT980186	Maybe (N)	Agency Permission required PSP	0.04
PNT020093	No		0.04
PNT743185	Maybe (Y)	Agency permission needed Seed Prod	2.8
PNT780447	Yes		98
PNT810111	No	Historic site	48.36
PNT850085	Yes		1052
PNT850171	Yes		1710
PNT870097	Maybe (Y)	Agency permission needed	56.66
PNT870326	Maybe (Y)	Agency permission needed	4117
PNT870863	Maybe (Y)	Agency permission needed Commercial//r ok	40.5
PNT890461	No		64.7
PNT890583	Maybe(Y)	Agency permission needed	187.67
PNT900169	Maybe Y)	Agency permission needed	4
PNT920172	No		4
PNT920247	Maybe (N)	Agency permission required PSP	2.25
PNT920248	Maybe (N)	Agency permission required PSP	2.25
PNT940025	No	Oil and gas only	39
PNT970120	No	PSP	0.04
PNT970179	Maybe (N)	Agency permission required arch site	179.5
PNT980125	Maybe (N)	Agency permission required PSP	0.04
PNT980127	Maybe (N)	Agency permission required PSP	0.04
PNT980128	Maybe (N)	Agency Permission required PSP	0.04
PNT980129	Maybe (N)	Agency Permission required PSP	0.04
PNT980131	Maybe (N)	Agency Permission required PSP	0.04
PNT980133	Maybe (N)	Agency Permission required PSP	0.04
PNT980182	Maybe (N)	Agency Permission required PSP	0.04
PNT980184	Maybe (N)	Agency Permission required PSP	0.04
PNT980185	Maybe (N)	Agency Permission required PSP	0.04
PNT980187	Maybe (N)	Agency Permission required PSP	0.04
PNT780510	Yes		518
PNT910121	Maybe (N)	Agency permission required	?
PNT910327	Maybe (N)	Agency permission required Industrial ok	?
PNT980192	Maybe (N)	Agency Permission required PSP	0.04

Summary of land area associated with PNTs having a ‘No’ or ‘Maybe No’ harvest status.

<i>PNT</i>	<i>Quarter Section</i>	<i>PNT</i>	<i>Quarter Section</i>	<i>PNT</i>	<i>Quarter Section</i>
PNT980191	417089 1NW	PNT000214	41009013NW	PNT870360	41008928NE
PNT810111	41109336NE	PNT910121	414100 6NW		41008928NW
	411094 1SE		414100 7NW		41008931SE
PNT910327	415099 6NW		414100 7SW		41008932SE
	415099 7NE		41410018SW		41008932SW
	415099 7NW		41509918NW		41008933SW
	415099 7SE		41509918SW	PNT980126	409110214
	415099 7SW		41509919NE	PNT020093	409309083
	416098 4NE		41509919NW		409309084
	416098 8NE		41509919SW	PNT890461	409809164
	416098 8NW		41509929NE		409809211
	416098 8SE		41509929NW	PNT920172	409510104
	416098 8SW		41509929SW	PNT920247	409410011
	416098 9NE		41509930NE	PNT920248	409410014
	416098 9NW		41509930SE	PNT940025	409310281
	416098 9SE		41509930SW		409310282
	416098 9SW		41509932NE	PNT970120	410008122
	41609815NW		41509932NW	PNT970179	409510083
	41609816NE		41509932SE		409510084
	41609816NW		41509932SW		409510171
	41609816SW		41509933SE		409510172
	41609817SE		41509933SW		409510173
	41609817SW		41509934NE		409510174
	41609821NE		41509934NW		409510183
	41609821SE		41509934SW		409510184
	41609821SW		41509935NW	PNT980125	409609113
	41609822NE		415100 1NE	PNT980127	409409052
	41609822NW		415100 1NW	PNT980128	409611073
	41609822SW		415100 1SE	PNT980131	410008121
	41609823NW		415100 1SW	PNT980133	409807321
	41609826NE		415100 2SE	PNT980129	409610212
	41609826NW		415100 2SW	PNT980182	409411324
	41609826SW		415100 3NE	PNT980184	409709223
	41609828NE		415100 3NW	PNT980185	409711194
	41609828NW		415100 3SE	PNT980187	409308092
	41609828SE		415100 4NE	PNT980192	409313321
	41609833NE		415100 4NW	PNT980186	409012241
	41609833NW		415100 5NE		
	41609833SW		415100 5SE		
	41609834NW		41510010SE		
	41609835NE		41510010SW		
	41609835NW		41510011NE		
	41609835SE		41510011NW		
	416099 1NE		41510011SE		

<i>PNT</i>	<i>Quarter Section</i>	<i>PNT</i>	<i>Quarter Section</i>	<i>PNT</i>	<i>Quarter Section</i>
PNT910327	416099 1NW	PNT910121	41510011SW	PNT910121	41609928NE
(con't)	416099 1SE	(con't)	41510012NW	(con't)	41609928NW
	416099 1SW		41510012SE		41609928SE
	416099 2NE		41510013SE		41609928SW
	416099 2NW		41510013SW		41609929NE
	416099 2SE		41510014SE		41609929SE
	416099 2SW		41510015NW		41609932NE
	41609911SE		41510016NE		41609932SE
	41609911SW		41510021NE		41609933NE
	41609912NE		41510021SE		41609933NW
	41609912NW		41510022NE		41609933SE
	41609912SE		41510022NW		41609933SW
	41609912SW		41510022SW		41609934SW
			41510027NE		
			41510027NW		
			41510027SE		
			41510028NE		
			41510028SE		
			41510033SE		
			41510034SE		
			41510034SW		
			41609913NW		
			41609913SE		
			41609913SW		
			41609914NE		
			41609914NW		
			41609915NE		
			41609921NE		
			41609922NE		
			41609922NW		
			41609922SE		
			41609922SW		
			41609923SW		
			41609924NE		
			41609925NE		
			41609925NW		
			41609925SE		
			41609925SW		
			41609926NE		
			41609926NW		
			41609926SE		
			41609926SW		
			41609927NE		
			41609927NW		
			41609927SE		



**ALBERTA
PACIFIC**

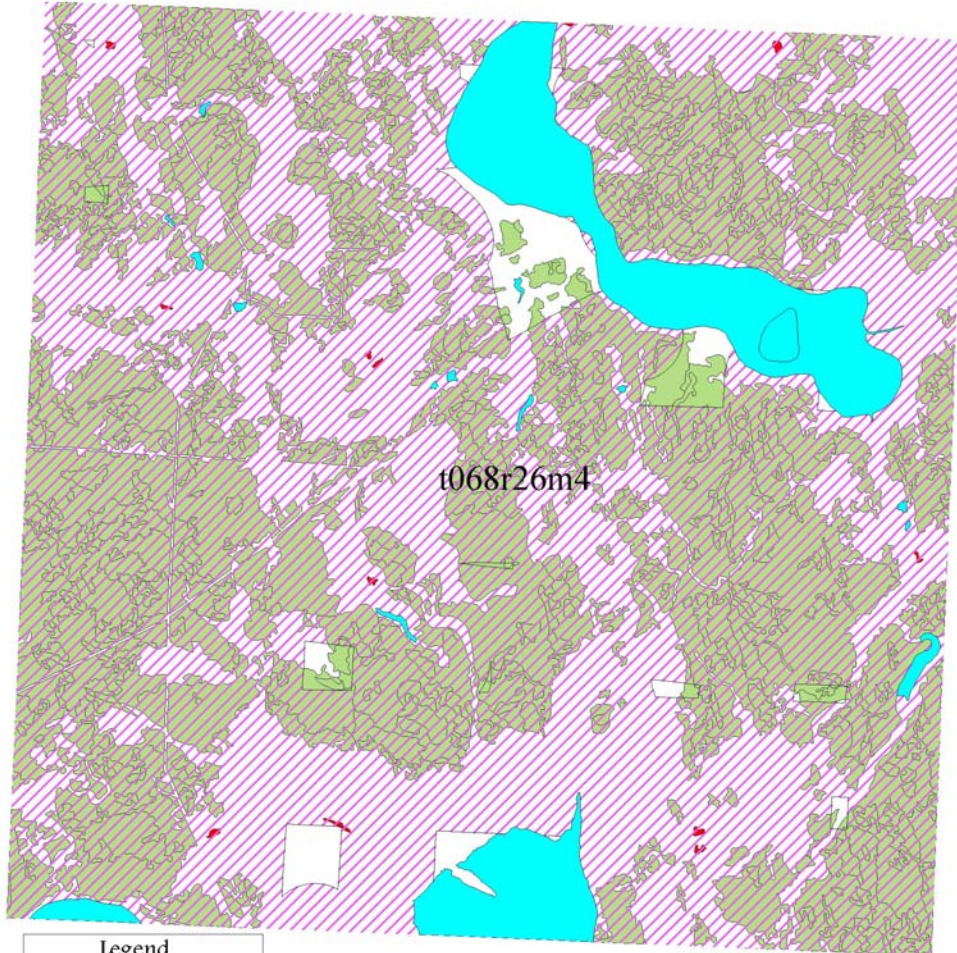
FOREST INDUSTRIES INC

Appendix V: Isolated Stand Analysis Example



Isolated Stand Analysis

75m Adjacency, 500m Proximity



Legend	
	Non-Isolated Stands
	Isolated Stands
	Road and Oil Buffers

400 0 400 800 1200 Meters



Isolated Stand Criteria

1. Stands within 500m of roads, seismic, and/or cut lines.
 - a. Total area must be greater than 1 ha when combined with adjacent stands (adjacency distance 75m).
 - b. For areas less than 1 ha, total area including surrounding productive stands within 1km must be greater than 5 ha.
2. Stands beyond 500m of roads, seismic, and/or cut lines.
 - a. Total area must be greater than 2 ha when combined with adjacent stands (adjacency distance 75m).

