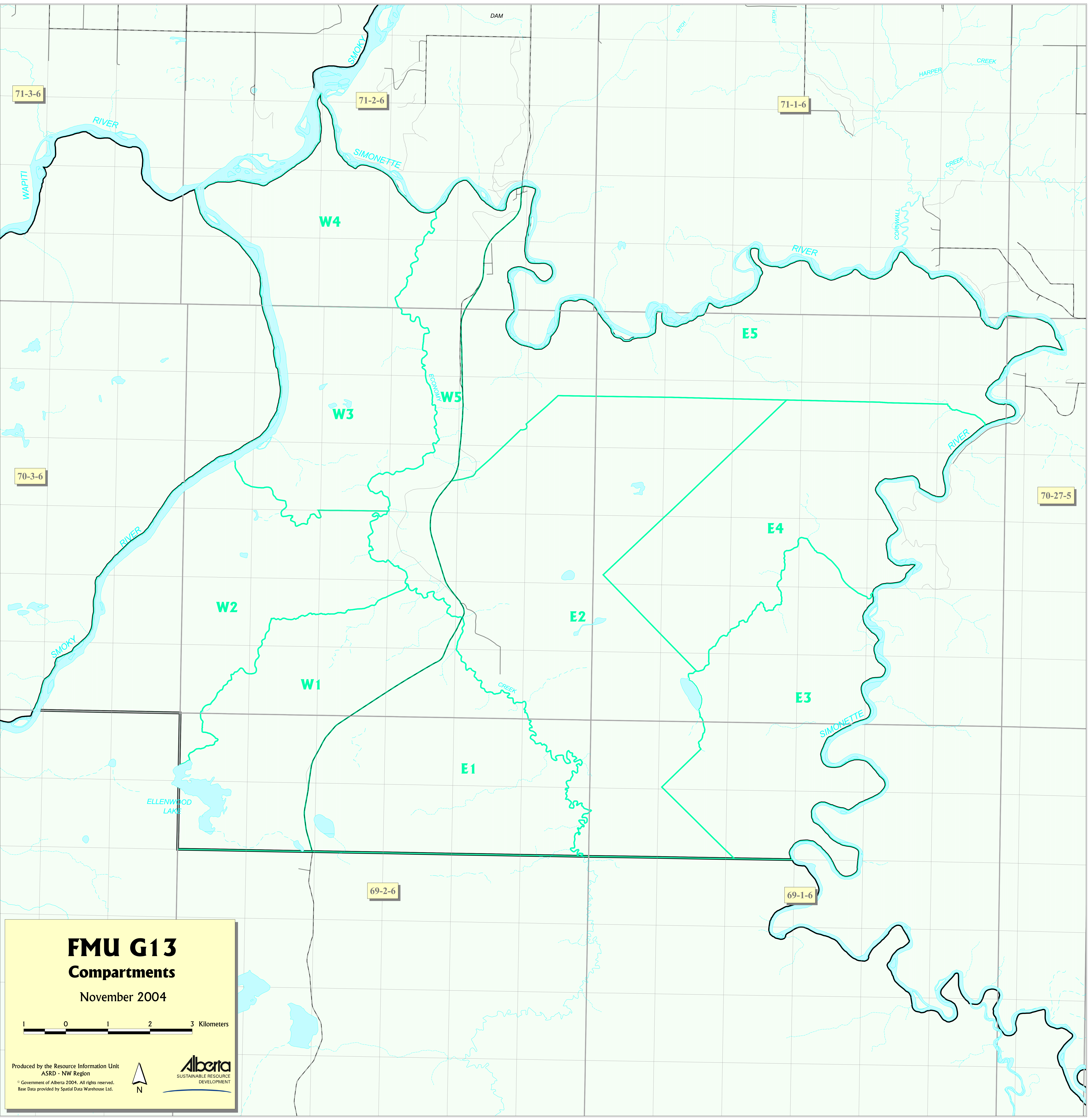


## **APPENDIX C: Large scale maps**



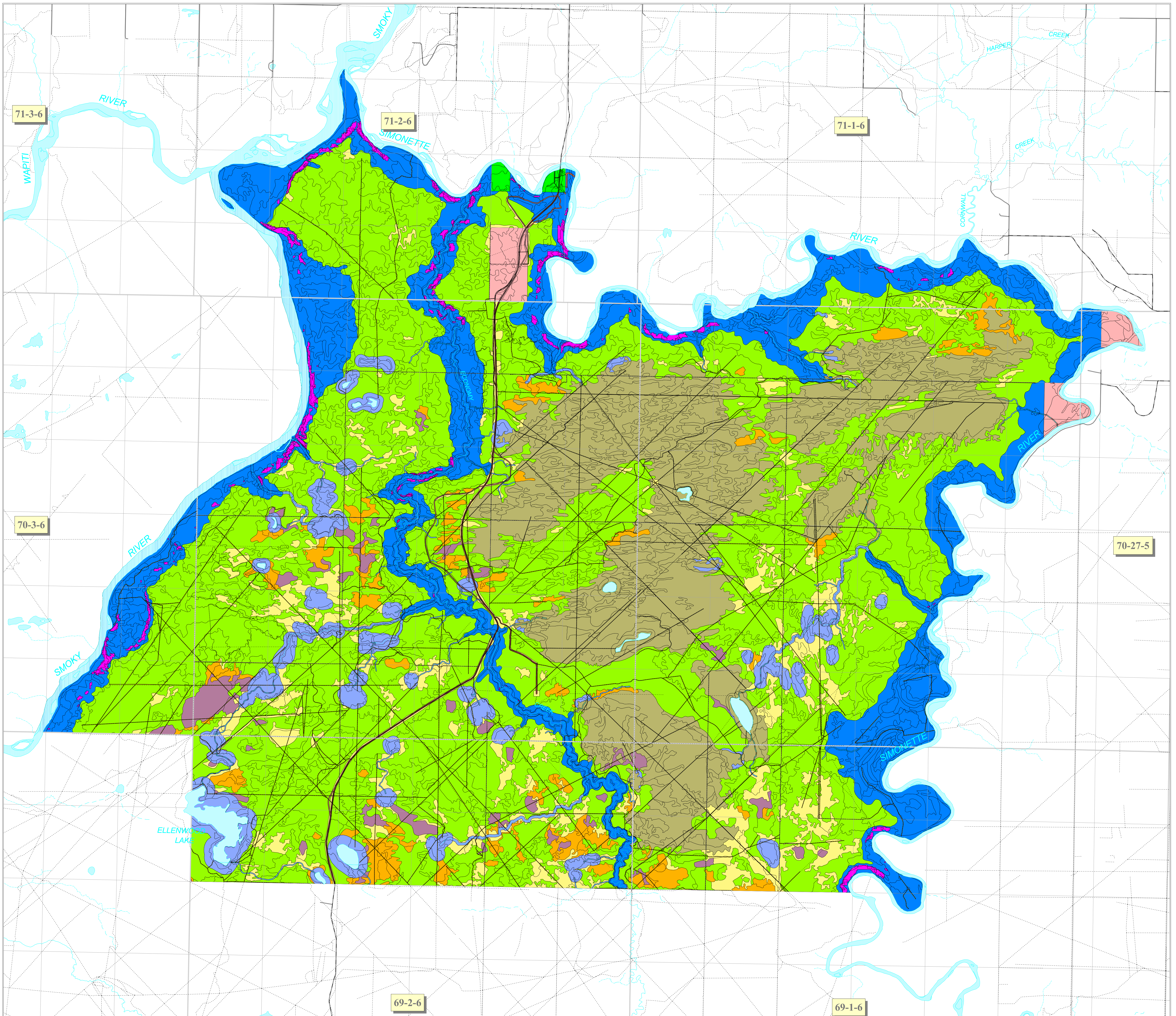
# FMU G13 Compartments

November 2004



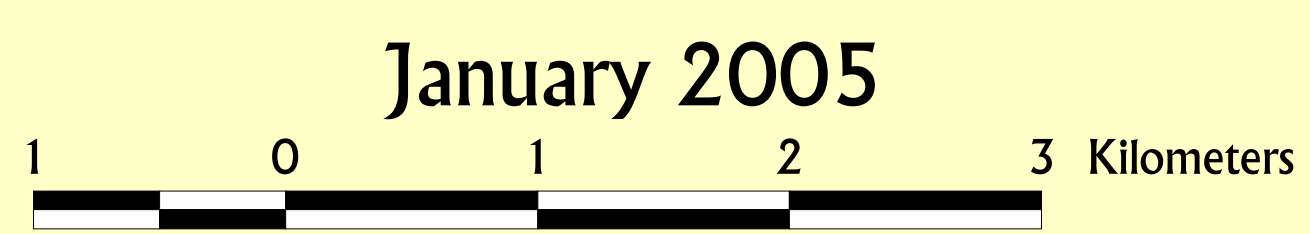
Produced by the Resource Information Unit  
ASRD - NW Region  
© Government of Alberta 2004. All rights reserved.  
Base Data provided by Spatial Data Warehouse Ltd.



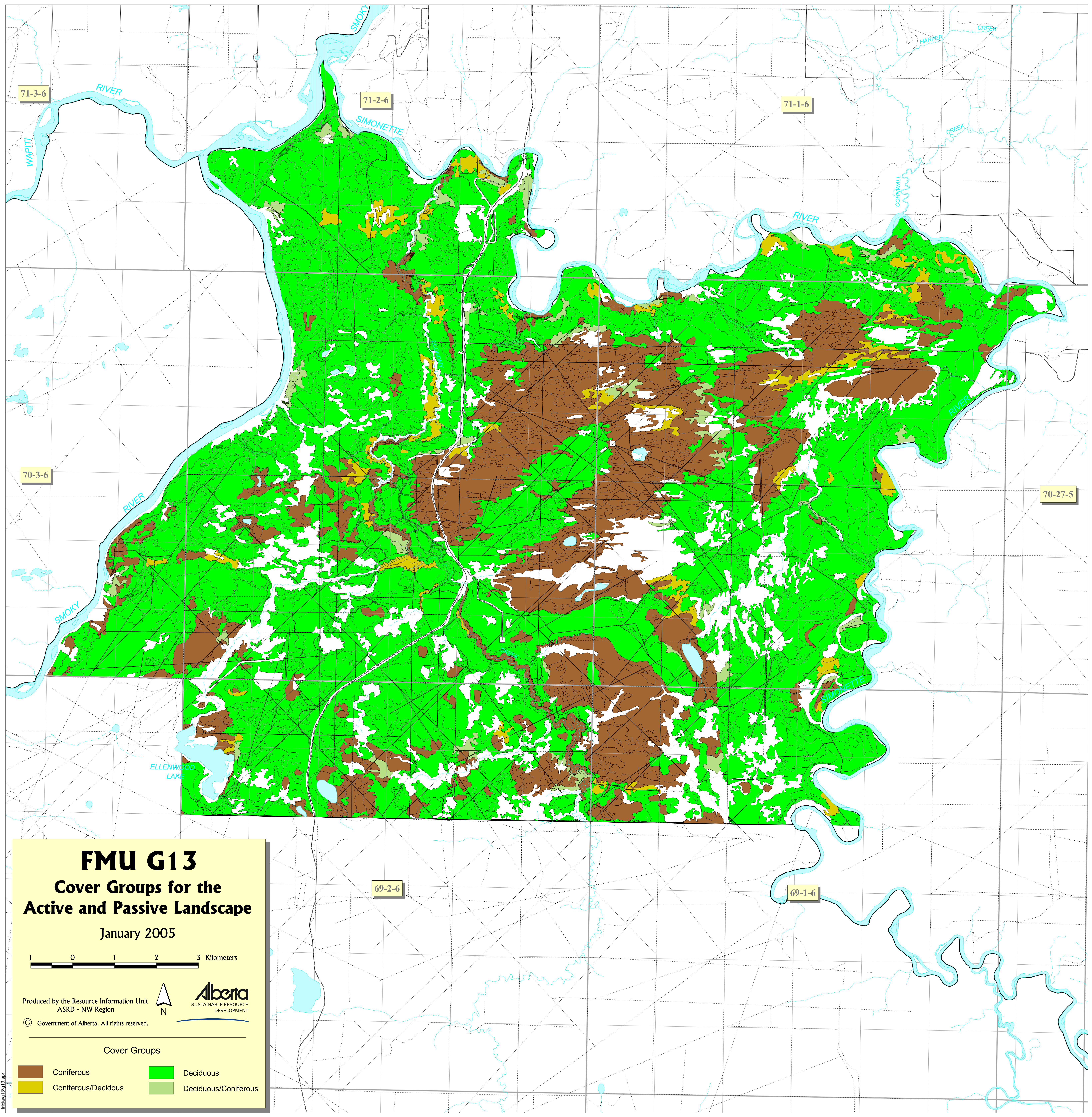


# FMU G13

## Landbase Netdown Categories



	Access Buffers		Harvestable Landbase
	Cutline Buffers		Provincial Rec. Area
	Dunefield		Processing Sliver Polygons
	Freehold		Slopes > 45%
	Water Buffers		U TPR
	Merch Deletions		Non-forested
	River Breaks		



**FMU G13**  
**Cover Groups for the Active and Passive Landscape**  
 January 2005





1 0 1 2 3 Kilometers

Produced by the Resource Information Unit  
 ASRD - NW Region

© Government of Alberta. All rights reserved.

**Alberta**  
 SUSTAINABLE RESOURCE DEVELOPMENT

**Cover Groups**

	Coniferous		Deciduous
	Coniferous/Deciduous		Deciduous/Coniferous

frcalg13g13.apr