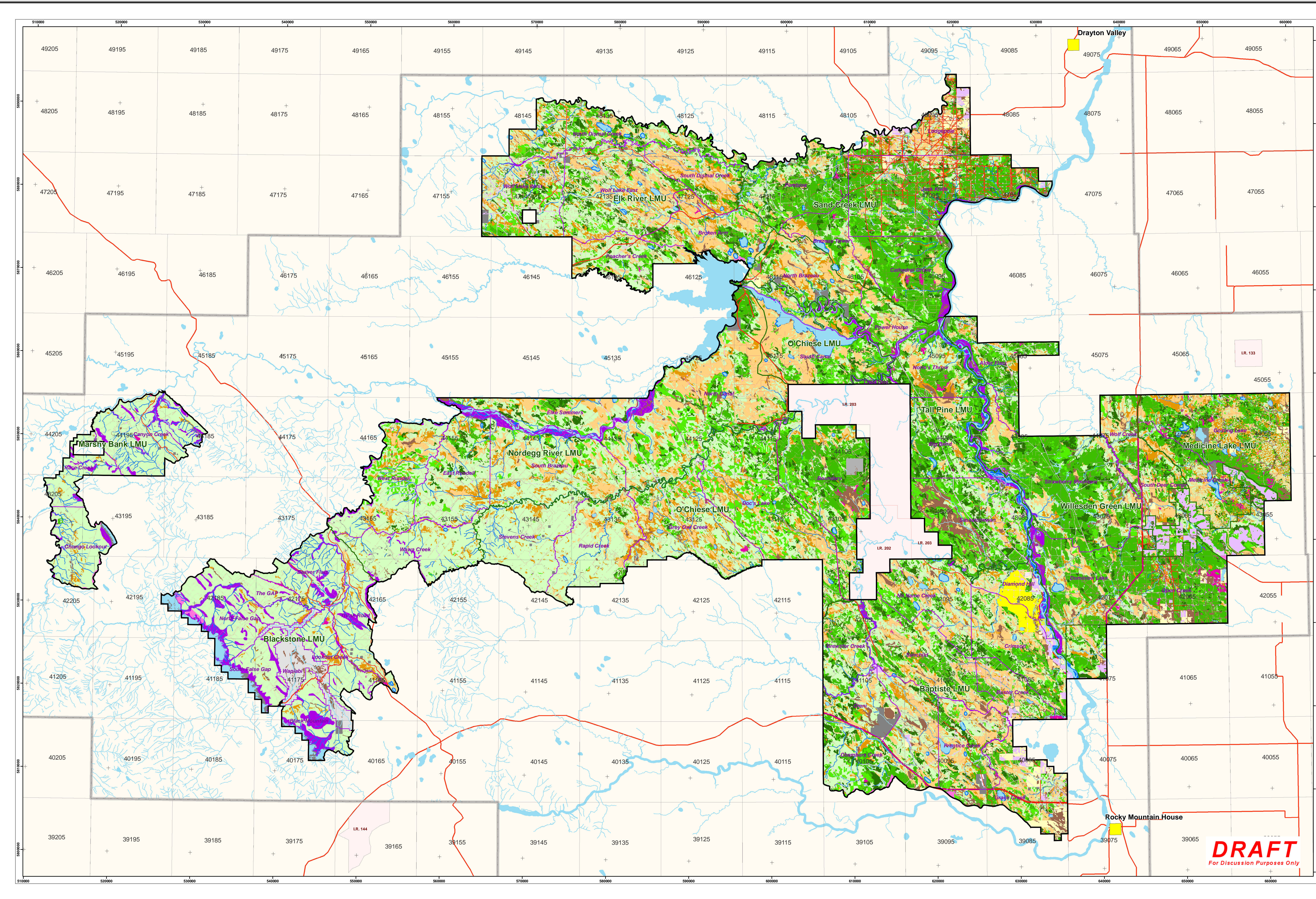


Landbase Netdown Classification



Sustained Yield Unit R12

Weyerhaeuser
The future is growing™

Drayton Valley
FMA & FMU R1

Landbase Netdown Classification

Legend

Base Features

- SYU Boundary
- Extent of Net Landbase Digital Data
- LMU Boundary
- Harvest Design Area
- Roads / Access
- ATS
- Communities
- Reserve
- Lakes / Rivers
- Streams

Netdown*

Non-Forested Area Reductions

- Anthropogenic Vegetated
- Anthropogenic Non-Vegetated
- Non-Forested Vegetated
- Naturally Non-Vegetated

Steep Slopes, Water and Road Buffers

- Steep Slopes
- Water Buffers
- Highway Corridor Buffer (100m)

Dispositions and Other Area Removals

- Special Places 2000 - Wapabi
- O'Chiese Natural Area (NAA920002)
- Dispositions
- Private Area
- Grazing Disposition
- Landuse Lines
- Seismic Lines

Subjective and Ecosite Deletions

- Larch Deletion
- Black Spruce Deletion

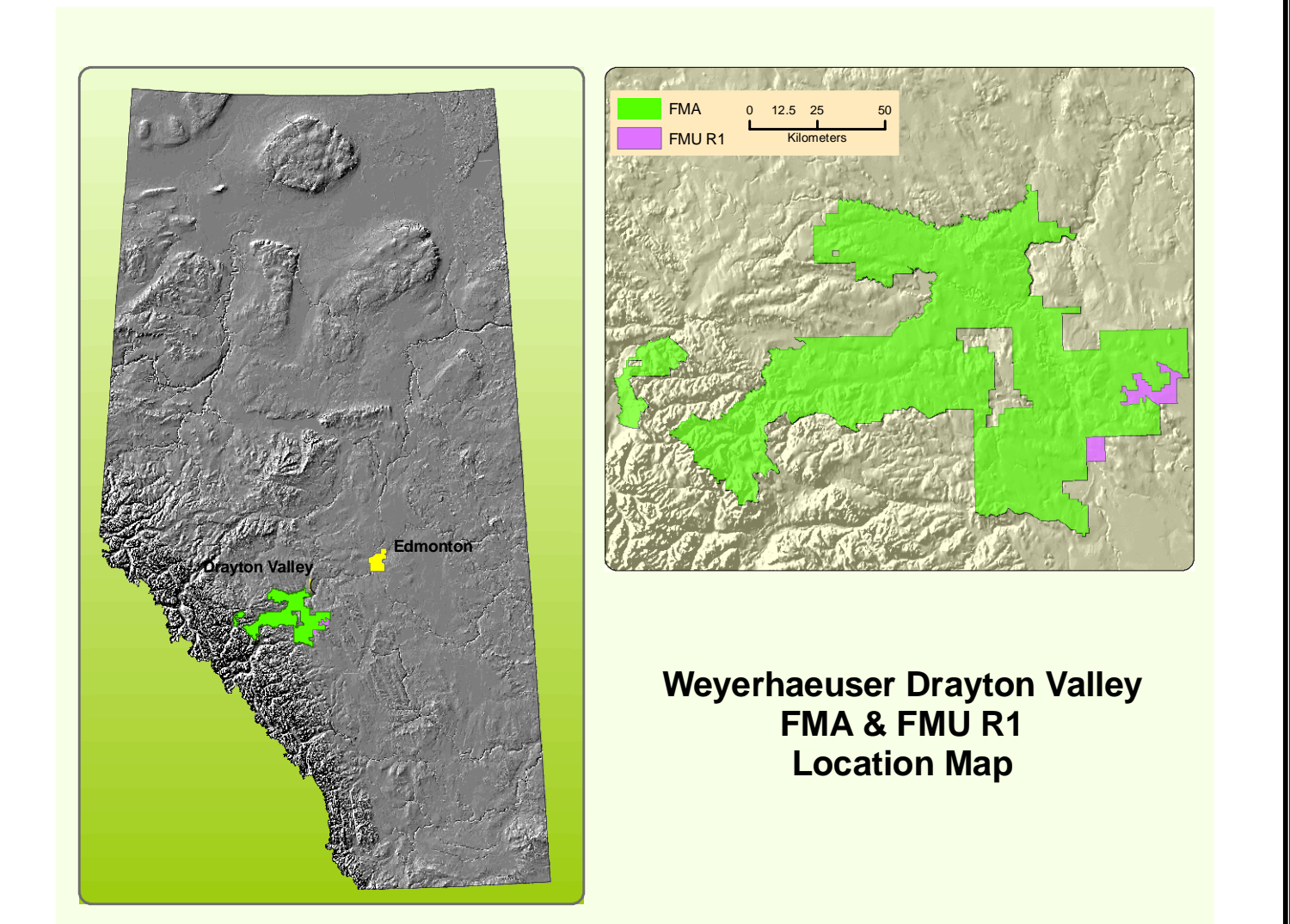
Undefined/Invalid

- Invalid Ecosites (x,y,z) and Alpine NSR
- Undefined Opening Polygons

Productive Forest Landbase

- Coniferous
- Coniferous/Deciduous
- Deciduous
- Deciduous/Coniferous

* Some categories have been aggregated for mapping purposes.



North Arrow

1:150,000 @ 50" X 28"
1:350,000 @ 22" X 12"

Projection: UTM Zone 11 - Datum: NAD83 (CSRS)

Timberline
Forest Inventory Consultants

Timberline Forest Inventory Consultants
Resource Analysis Department
Edmonton, Alberta
April 29, 2005

Map Project: 04-000000-04-000000-Landbase_Netdown_Classification.mxd - C: Harpur / A: B&B

DRAFT
For Discussion Purposes Only