
Appendix 11 – AVI Documentation

Description of
Alberta Vegetation Inventory
for
January, 2007 Amendment to
FMA 9200030
Forest Management Plan

TABLE OF CONTENTS

1. INTENT AND AVI OVERVIEW 3

2. ORIGINAL INVENTORY 3

3. UPDATE OF THE ORIGINAL SFP INVENTORY: 5

4. *INVENTORY OF ROCKY WOOD PRESERVERS QUOTA SPHERE* 5

5. *INVENTORY OF THE AMENDED FMA* 5

6. *AVI APPROVAL PROCESS* 6

Appendix 1 - AVI Information 7

Appendix 2 - Approval Letter 25

1. INTENT AND AVI OVERVIEW

In accordance with the Alberta Forest Management Planning Standard 2.2, the following is a description of the Alberta Vegetation Inventory (AVI), developed between 1991 and 2003, for the Sundre Forest Products Inc. (SFP), Forest Management Area, held under FMA 9200030.

Production of this inventory is best described under the following headings:

- Original inventory of the initial Forest Management Area (FMA)
- Update of the original inventory
- Inventory of Rocky Wood Preservers quota sphere
- Inventory of the amended FMA

2. ORIGINAL INVENTORY

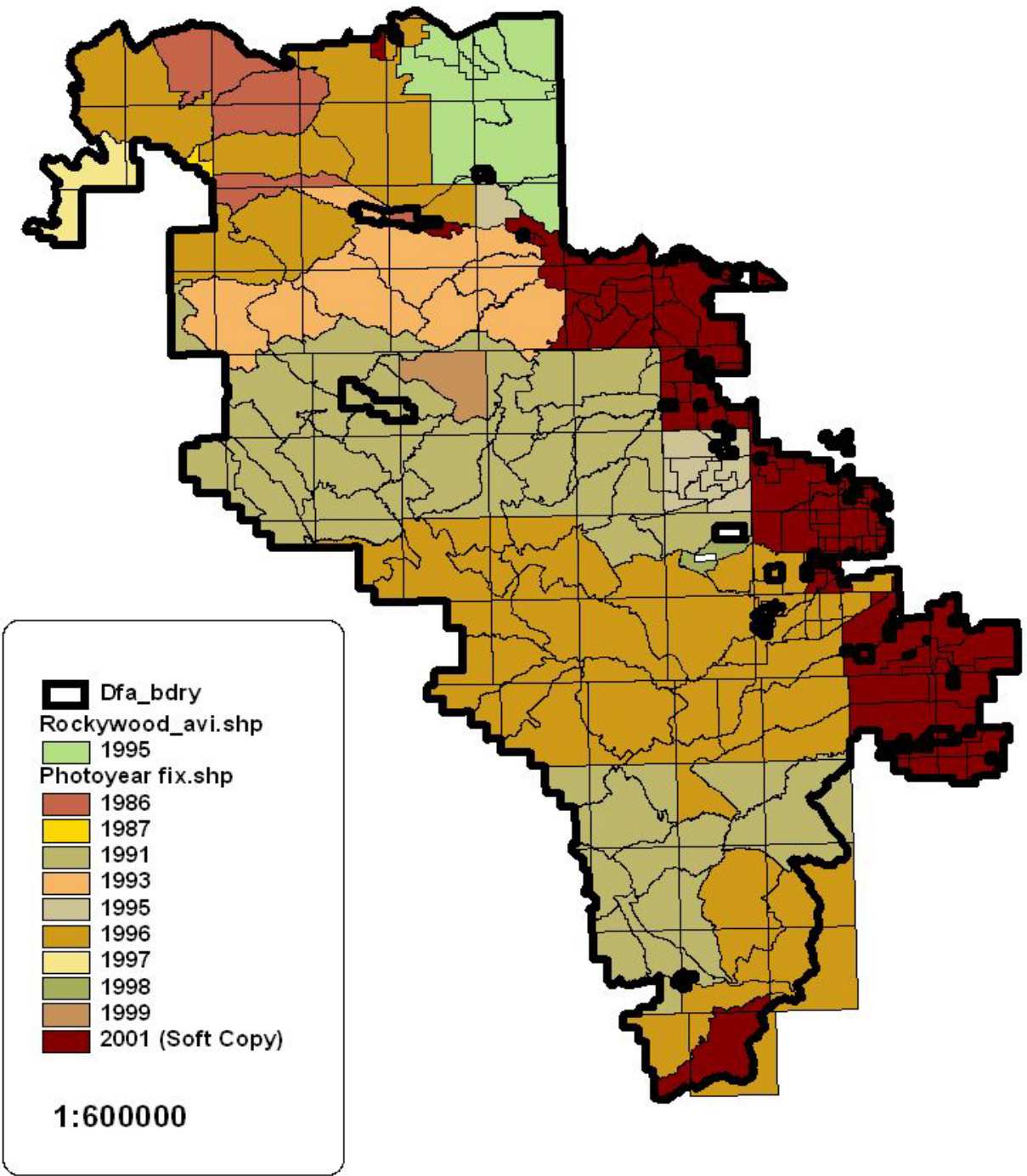
Production of the original AVI inventory, to replace Phase II and Phase III inventories, commenced in 1991 and was contracted to The Forestry Corp., under the supervision of interpreter Dean Patterson. AVI standard 2.1 was adopted. Initially, existing 1:15,000 aerial photography from the provincial library was used.

Production of this AVI inventory was prioritized so the product could be utilized in the design of new harvest plans. As the project progressed, new 1:15,000 aerial photography was flown and used for the interpretation. Figure 1, below, identifies the year of the photography that was used in this original inventory. Table 1, in Appendix 1, identifies the photo interpreter, and year of interpretation, for each area of the inventory. Field sampling was done on an ongoing basis, in conjunction with the photo interpretation.

As time progressed, the availability of qualified photo interpreters became an issue for The Forestry Corp. This resulted in the Forestry Corp. sub-contracting parcels of the project to other AVI contractors (identified in Table 1). Quality control was a responsibility of The Forestry Corp. Photo interpretation, field work and ortho-base transfer audits were done on an ongoing basis, in conjunction with the Province.

Figure 1

AVI Photo Year



3. UPDATE OF THE ORIGINAL SFP INVENTORY:

Since 1991, SFP has been maintaining a spatial harvest openings file in a geographical information system (GIS). This file derives from block boundaries captured with hand-held geographical positioning systems (GPS). These files, captured in the field when cut blocks were initially laid out, were updated if the cut block was modified during harvest. These GPS-based files are used, on an on-going basis, to determine harvest depletion.

The need to update the AVI, with harvest and other deletions, was identified in 1998 and, that year, 1:30,000 aerial photography was flown. This photography was used, in conjunction with the harvest openings file, to update the AVI to May 1, 1998.

The AVI update was contracted to Trees Consulting and conducted under the supervision of photo interpreter Lowel Lyseng. The Province monitored the project as it progressed. Issues, such as combining slivers, and the re-classifying of adjacent polygons, were addressed.

4. INVENTORY OF ROCKY WOOD PRESERVERS QUOTA SPHERE

In 1995, Rocky Wood Preservers commissioned an AVI for their quota sphere in the northeast corner of the FMA. The work was performed by The Forestry Corp, under the supervision of photo interpreter Dean Patterson. Photography was flown in 1995 and the interpretation was performed in 1996. Photo interpretation, field work and ortho-base transfer audits, were done by The Forestry Corp as part of the initial project. Incorporating the inventory into the FMA inventory was also done by The Forestry Corp in 2002 as part of the attribute coding, and digital attribute database audit. Names of interpreters and dates are included in Table 2, found in Appendix 1.

5. INVENTORY OF THE AMENDED FMA

In 2001, the boundaries of the FMA were rationalized to exclude lands on the north boundary that contributed to the coniferous rights of Weyerhaeuser, and lands in the south that contributed to the annual allowable cut (AAC) of Spray Lakes Sawmills. The rationalization also added the lands to the east of the FMA, which contributed to SPF harvesting rights. Consequently, SFP initiated new AVI on the added lands. These areas are identified on the map (figure 1). This work was contracted to Green Link Forestry Services and supervised by photo interpreter John Barbeau. The project utilized 2001, 1:30,000 aerial photography and the process "Soft Copy". This process was audited as it progressed, and accepted by the Province. Table 3, Appendix 1, contains the names of interpreters and dates of interpretation.

6. AVI APPROVAL PROCESS

As described previously, the AVI for the SFP, FMA was contracted to companies familiar with AVI, and the interpretation was supervised and performed by interpreters qualified to do the work. Quality control was the responsibility of the project contractor and was done as the projects progressed. Photo interpretation, field work and ortho-base transfer audit, were as described above. The attribute coding, and digital attribute database audit, was done on the current FMA landbase in 2003 as one unit. Green Link Forestry Consultants and The Forestry Corp contributed to this audit and final approval was received Oct. 6, 2003 (Approval Letter included as Appendix 2).

Appendix 1 - AVI Information

Table 1

AREA	TOWNSHIP	AVI VERSION	MAP SHEET	PHOTO DATE	INTERPRE. DATE	INTERPRETER	COMPANY	PHOTO SCALE
11,416,699	513042	2.1	1	51986	111995	Dean Patterson	Forestry Corp	1:15,000
53,256,748	513042	2.1	2	81996	101997	Dean Patterson	Forestry Corp	1:15,000
35,658,293	515042	2.1	3	81996	41998	Don Ens	SRC	1:15,000
13,865,372	512042	2.1	5	81996	61998	Chris Lomerse	SRC	1:15,000
29,531,895	514042	2.1	6	51986	111995	Dean Patterson	Forestry Corp	1:15,000
43,743,449	515042	2.1	8	51986	111995	Dean Patterson	Forestry Corp	1:15,000
20,759,893	509036	2.1	9	81996	71998	Dean Patterson	Forestry Corp	1:15,000
15,193,576	509036	2.1	10	81998	11199	Dean Patterson	Forestry Corp	1:15,000
31,765,947	509036	2.1	11	101991	51995	Elisha Cahoon	Forestry Corp	1:15,000
24,898,748	510033	2.1	12	101991	31997	Dean Patterson	Forestry Corp	1:15,000
8,663,940	508035	2.1	13	81996	101996	Dean Patterson	Forestry Corp	1:15,000
55,713,999	510033	2.1	13	101991	31995	Dean Patterson	Forestry Corp	1:15,000
5,435,772	510033	2.1	14	71991	121998	Rob Meinzer	Forestry Corp	1:15,000
39,756,717	508034	2.1	15	81996	101998	Robert Meinzer	Forestry Corp	1:15,000
3,222,247	508034	2.1	16	101991	61996	Dean Patterson	Forestry Corp	1:15,000
20,683,413	511033	2.1	17	101991	21998	P. Vansickle	SRC	1:15,000
47,928,743	508034	2.1	18	81996	101996	Dean Patterson	Forestry Corp	1:15,000
7,628,857	511033	2.1	19	71991	121998	Rob Meinzer	Forestry Corp	1:15,000
10,127,826	509034	2.1	20	81996	101997	Rob Meinzer	Forestry Corp	1:15,000
12,396,464	509034	2.1	21	81996	31997	Dean Patterson	Forestry Corp	1:15,000
31,138,048	509034	2.1	22	81996	121997	Dean Patterson	Forestry Corp	1:15,000
2,135,269	509034	2.1	23	81996	31997	Dean Patterson	Forestry Corp	1:15,000
903,546	509034	2.1	24	81996	51997	Dean Patterson	Forestry Corp	1:15,000
19,251,846	509034	2.1	25	81996	101996	Dean Patterson	Forestry Corp	1:15,000
1,668,461	509034	2.1	26	81996	81997	Dean Patterson	Forestry Corp	1:15,000
3,777,574	508034	2.1	27	81996	21999	Dean Patterson	Forestry Corp	1:15,000
106,379	509034	2.1	28	81996	51997	Dean Patterson	Forestry Corp	1:15,000
366,018	510035	2.1	29	81996	21998	P. Vansickle	SRC	1:15,000
286,887	510035	2.1	30	81996	21998	P. Vansickle	SRC	1:15,000
17,384,305	510035	2.1	31	81996	31997	Dean Patterson	Forestry Corp	1:15,000
55,256,927	510035	2.1	32	81996	51997	Dean Patterson	Forestry Corp	1:15,000
36,553,399	511035	2.1	33	81996	51997	Dean Patterson	Forestry Corp	1:15,000
23,448,737	511034	2.1	42	81996	21998	P. Vansickle	SRC	1:15,000

AREA	TOWNSHIP	AVI VERSION	MAP SHEET	PHOTO DATE	INTERPRE. DATE	INTERPRETER	COMPANY	PHOTO SCALE
61,477,111	511034	2.1	43	81996	21998	P. Vansickle	SRC	1:15,000
74,314	511034	2.1	44	81996	21998	P. Vansickle	SRC	1:15,000
35,532,800	509030	2.1	46	81996	61998	Derek Fisher	SRC	1:15,000
37,776,995	510030	2.1	47	81996	61998	Derek Fisher	SRC	1:15,000
8,400,525	509031	2.1	49	101991	81995	Elisha Cahoon	Forestry Corp	1:15,000
18,544,425	509031	2.1	50	101991	81995	Elisha Cahoon	Forestry Corp	1:15,000
8,105,849	507035	2.1	51	81996	21999	Dean Patterson	Forestry Corp	1:15,000
643,973	507035	2.1	52	81996	21999	Dean Patterson	Forestry Corp	1:15,000
18,212,147	512034	2.1	53	81996	21998	P.Vansickle	SRC	1:15,000
13,294,488	512034	2.1	54	81996	21998	P.Vansickle	SRC	1:15,000
4,331,183	511034	2.1	55	81996	31997	Dean Patterson	Forestry corp	1:15,000
31,039,475	511036	2.1	56	81996	41998	P.Vansickle	SRC	1:15,000
10,480,895	511036	2.1	57	81996	41998	P. Vansickle	SRC	1:15,000
8,349,362	511036	2.1	58	81996	41998	P. Vansickle	SRC	1:15,000
24,339,545	511036	2.1	59	81996	41998	P. Vansickle	SRC	1:15,000
17,529,756	511036	2.1	60	81996	51997	Dean Patterson	Forestry Corp	1:15,000
20,570,145	512036	2.1	61	81996	41998	P. Vansickle	SRC	1:15,000
59,624,071	512036	2.1	62	81996	41998	P. Vansickle	SRC	1:15,000
73,246	512036	2.1	63	81996	41998	P. Vansickle	SRC	1:15,000
12,727	512036	2.1	64	81996	41998	P. Vansickle	SRC	1:15,000
30,624	512036	2.1	65	81996	41998	P. Vansickle	SRC	1:15,000
3,389,073	512036	2.1	66	81996	41998	P. Vansickle	SRC	1:15,000
25,007,732	513036	2.1	68	81996	41998	P. Vansickle	SRC	1:15,000
22,751,749	513036	2.1	69	101991	31995	Dean Patterson	Forestry Corp	1:15,000
2,165,244	514036	2.1	70	101991	31995	Dean Patterson	Forestry Corp	1:15,000
14,964,766	514036	2.1	71	101991	31996	Dean Patterson	Forestry Corp	1:15,000
1,308,627	514036	2.1	72	101991	41998	P. Vansickle	SRC	1:15,000
29,711,505	508032	2.1	75	81996	51998	Derek Fisher	SRC	1:15,000
9,440,836	509035	2.1	77	81996	81997	Dean Patterson	Forestry Corp	1:15,000
75,682	508032	2.1	78	81996	51998	Derek Fisher	SRC	1:15,000
2,083,027	508032	2.1	79	81996	51998	Derek Fisher	SRC	1:15,000
2,046,990	512043	2.1	80	81996	61998	Chris Lomerse	SRC	1:15,000
2,657,233	514042	2.1	81	81996	11998	Dean Patterson	Forestry Corp	1:15,000
4,495,717	509035	2.1	81	81996	51997	Dean Patterson	Forestry Corp	1:15,000

AREA	TOWNSHIP	AVI VERSION	MAP SHEET	PHOTO DATE	INTERPRE. DATE	INTERPRETER	COMPANY	PHOTO SCALE
8,765,460	510033	2.1	82	101991	21998	P. Vansickle	SRC	1:15,000
957,346	511033	2.1	83	71991	121998	Rob Meizner	Forestry Corp	1:15,000
17,011,288	509034	2.1	84	81996	121997	Dean Patterson	Forestry Corp	1:15,000
21,910,012	510035	2.1	85	81996	71998	Dean Patterson	Forestry Corp	1:15,000
159,341	510035	2.1	86	81996	51997	Dean Patterson	Forestry Corp	1:15,000
9,918,967	509035	2.1	89	81996	21999	Dean Patterson	Forestry Corp	1:15,000
71,458,603	509035	2.1	90	81996	61998	Dean Patterson	Forestry Corp	1:15,000
17,062,156	511035	2.1	93	81996	21998	P.Vansickle	SRC	1:15,000
25,106,745	511035	2.1	94	81996	21998	P.Vansickle	SRC	1:15,000
10,151,229	507036	2.1	95	81996	21999	Dean Patterson	Forestry Corp	1:15,000
3,766,626	511035	2.1	96	81996	21998	P.Vansickle	SRC	1:15,000
21,982,468	508036	2.1	97	81996	11999	Dean Patterson	Forestry Corp	1:15,000
1,312,080	508036	2.1	98	81996	11999	Dean Patterson	Forestry Corp	1:15,000
1,296,445	508036	2.1	99	81996	11999	Dean Patterson	Forestry Corp	1:15,000
2,622,975	508036	2.1	100	81996	11999	Dean Patterson	Forestry Corp	1:15,000
5,428,536	508036	2.1	101	81996	61998	Dean Patterson	Forestry Corp	1:15,000
56,993,021	508031	2.1	102	81996	61998	J. James	SRC	1:15,000
3,886,217	508031	2.1	103	81996	61998	J. James	SRC	1:15,000
2,372,727	508031	2.1	104	81996	61998	J. James	SRC	1:15,000
29,636,495	508031	2.1	105	81996	61998	J. James	SRC	1:15,000
2,512,614	508031	2.1	106	81996	61998	J. James	SRC	1:15,000
21,053,313	509031	2.1	107	81996	61998	Derek Fisher	SRC	1:15,000
26,631,388	509031	2.1	108	81996	61998	Derek Fisher	SRC	1:15,000
2,057,957	513039	2.1	109	101993	11995	Dean Patterson	Forestry Corp	1:15,000
12,732,015	509031	2.1	110	81996	61998	Derek Fisher	SRC	1:15,000
12,805,207	511035	2.1	111	81996	21998	P.Vansickle	SRC	1:15,000
51,448,890	513039	2.1	112	101993	61998	M. Florchuk	SRC	1:15,000
28,967,851	513039	2.1	113	101991	21999	Karen Boida	Forestry Corp	1:15,000
12,731,491	513039	2.1	114	101993	71995	Alisha Cahoon	Forestry Corp	1:15,000
10,114,027	514039	2.1	115	81996	61998	Dean Patterson	Forestry Corp	1:15,000
31,296,113	514039	2.1	116	101993	71995	Elisha Cahoon	Forestry Corp	1:15,000
43,376,191	514039	2.1	117	101993	71995	Elisha Cahoon	Forestry Corp	1:15,000
22,842,945	515039	2.1	118	101993	71995	Elisha Cahoon	Forestry Corp	1:15,000
5,022,418	515039	2.1	119	81996	61998	Dean Patterson	Forestry Corp	1:15,000

AREA	TOWNSHIP	AVI VERSION	MAP SHEET	PHOTO DATE	INTERPRE. DATE	INTERPRETER	COMPANY	PHOTO SCALE
19,857,945	515039	2.1	120	101991	61998	Dean Patterson	Forestry Corp	1:15,000
41,029,247	512040	2.1	121	101993	11995	Dean Patterson	Forestry Corp	1:15,000
955,931	512040	2.1	122	1986	111996	Dean Patterson	Forestry Corp	1:15,000
8,296,758	512040	2.1	123	1986	111996	Dean Patterson	Forestry Corp	1:15,000
1,219,912	512040	2.1	124	1986	111996	Dean Patterson	Forestry Corp	1:15,000
14,225,719	512040	2.1	125	81996	91197	Dean Patterson	Forestry Corp	1:15,000
22,582,372	512040	2.1	126	81996	91997	Dean Patterson	Forestry Corp	1:15,000
101,143	512040	2.1	127	81996	91997	Dean Patterson	Forestry Corp	1:15,000
127,236	512040	2.1	128	81996	91997	Dean Patterson	Forestry Corp	1:15,000
30,626	512040	2.1	129	81996	91997	Dean Patterson	Forestry Corp	1:15,000
6,574,955	510032	2.1	130	101991	81995	Elisha Cahoon	Forestry Corp	1:15,000
60,353,680	509032	2.1	131	81996	91998	P. Vansickle	SRC	1:15,000
1,787,817	512038	2.1	132	101991	21999	Karen Boida	Forestry Corp	1:15,000
12,420,139	510031	2.1	133	101991	81995	Elisha Cahoon	Forestry Corp	1:15,000
827,250	510031	2.1	134	101991	81995	Elisha Cahoon	Forestry Corp	1:15,000
2,314,975	509032	2.1	135	101991	61996	Dean Patterson	Forestry Corp	1:15,000
13,484,601	509032	2.1	136	101991	11991	Rob Meizner	Forestry Corp	1:15,000
18,595,883	509032	2.1	137	101991	81995	Elisha Cahoon	Forestry Corp	1:15,000
291,340	509032	2.1	138	81996	41998	Derek Fisher	SRC	1:15,000
26,903,434	513038	2.1	140	101991	21999	Karen Boida	Forestry Corp	1:15,000
20,124,607	511039	2.1	142	101993	61998	M. Florchuk	SRC	1:15,000
54,308,224	511039	2.1	143	101993	61998	M. Florchuk	SRC	1:15,000
4,782,552	511039	2.1	144	101993	61998	M. Florchuk	SRC	1:15,000
14,689,385	514037	2.1	145	101991	31995	Dean Patterson	Forestry Corp	1:15,000
209,241	514037	2.1	146	101991	31996	Dean Patterson	Forestry Corp	1:15,000
27,370,762	514037	2.1	147	101991	31996	Dean Patterson	Forestry Corp	1:15,000
33,434,241	514037	2.1	148	101991	31996	Dean Patterson	Forestry Corp	1:15,000
3,591,336	514037	2.1	149	101991	31993	Dean Patterson	Forestry Corp	1:15,000
18,301,130	512038	2.1	150	101991	61998	P. Vansickle	SRC	1:15,000
3,125,277	512038	2.1	151	101991	61998	P. Vansickle	SRC	1:15,000
11,020,847	512038	2.1	152	101991	61998	P. Vansickle	SRC	1:15,000
7,642,963	512038	2.1	153	101991	61998	P. Vansickle	SRC	1:15,000
14,121,303	513038	2.1	154	101991	61998	P. Vansickle	SRC	1:15,000
18,217,081	513038	2.1	155	101991	61998	P. Vansickle	SRC	1:15,000

AREA	TOWNSHIP	AVI VERSION	MAP SHEET	PHOTO DATE	INTERPRE. DATE	INTERPRETER	COMPANY	PHOTO SCALE
950,361	513038	2.1	156	101991	31995	Dean Patterson	Forestry Corp	1:15,000
14,689,734	513038	2.1	157	101991	61998	P. Vansickle	SRC	1:15,000
257,350	513038	2.1	158	101991	61998	P. Vansickle	SRC	1:15,000
8,701,681	514038	2.1	160	101991	21999	Karen Boida	Forestry Corp	1:15,000
4,002,307	514038	2.1	161	101991	31995	Dean Patterson	Forestry Corp	1:15,000
57,553,227	514038	2.1	163	101991	61998	P. Vansickle	SRC	1:15,000
17,468,540	514038	2.1	164	101991	61998	P. Vansickle	SRC	1:15,000
10,691,215	509037	2.1	165	81995	41998	Dean Patterson	Forestry Corp	1:15,000
204,197	514038	2.1	167	101991	31996	Dean Patterson	Forestry Corp	1:15,000
5,808,936	514038	2.1	168	101993	71995	Elisha Cahoon	Forestry Corp	1:15,000
7,230,533	515041	2.1	169	91997	61996	Dean Patterson	Forestry Corp	1:15,000
6,146,154	515041	2.1	171	91987	121996	Dean Patterson	Forestry Corp	1:15,000
4,619,333	513040	2.1	174	81996	101997	Dean Patterson	Forestry Corp	1:15,000
16,642,342	513040	2.1	175	101993	111996	Dean Patterson	Forestry Corp	1:15,000
5,916,136	513040	2.1	176	101993	111996	Dean Patterson	Forestry Corp	1:15,000
1,876,945	513040	2.1	177	101993	111996	Dean Patterson	Forestry Corp	1:15,000
17,001,627	513040	2.1	178	101993	11995	Dean Patterson	Forestry Corp	1:15,000
48,910,909	514040	2.1	179	81996	91997	Dean Patterson	Forestry Corp	1:15,000
36,605,117	513040	2.1	180	81996	101997	Dean Patterson	Forestry Corp	1:15,000
2,067,175	514039	2.1	181	81996	101997	Dean Patterson	Forestry Corp	1:15,000
167,979	513039	2.1	182	101993	71995	Alisha Cahoon	Forestry Corp	1:15,000
32,809,435	514040	2.1	184	81996	61998	Dean Patterson	Forestry Corp	1:15,000
22,897,143	516040	2.1	191	91997	71996	Dean Patterson	Forestry Corp	1:15,000
1,556,070	517040	2.1	192	91997	71996	Dean Patterson	Forestry Corp	1:15,000
27,020,760	515037	2.1	195	101991	31996	Dean Patterson	Forestry Corp	1:15,000
3,509,040	509037	2.1	199	101991	41995	Elisha Cahoon	Forestry Corp	1:15,000
23,705,193	510037	2.1	200	101991	51995	Elisha Cahoon	Forestry Corp	1:15,000
1,840,125	511037	2.1	201	101991	51998	Dean Patterson	Forestry Corp	1:15,000
940,911	511037	2.1	202	101991	51998	Dean Patterson	Forestry Corp	1:15,000
5,065,944	509037	2.1	203	81995	41998	Dean Patterson	Forestry Corp	1:15,000
12,387,169	511037	2.1	203	101991	51998	Dean Patterson	Forestry Corp	1:15,000
771,597	511037	2.1	204	101991	51998	Dean Patterson	Forestry Corp	1:15,000
15,270,228	511037	2.1	205	101991	51998	Dean Patterson	Forestry Corp	1:15,000
22,248	509037	2.1	206	81995	41998	Dean Patterson	Forestry Corp	1:20,000

AREA	TOWNSHIP	AVI VERSION	MAP SHEET	PHOTO DATE	INTERPRE. DATE	INTERPRETER	COMPANY	PHOTO SCALE
18,079,827	509037	2.1	209	81995	41998	Dean Patterson	Foresty Corp	1:20,000
3,457,529	509037	2.1	210	81995	41998	Dean Patterson	Foresty Corp	1:20,000
11,512,403	509037	2.1	211	81995	41998	Dean Patterson	Foresty Corp	1:20,000
741,572	509037	2.1	212	81995	41998	Dean Patterson	Foresty Corp	1:20,000
8,130,838	509037	2.1	213	81995	41998	Dean Patterson	Foresty Corp	1:20,000
5,986,206	509037	2.1	215	81995	41998	Dean Patterson	Foresty Corp	1:20,000
11,118,536	509037	2.1	217	81995	41998	Dean Patterson	Foresty Corp	1:20,000
7,175,784	509037	2.1	218	81995	41998	Dean Patterson	Foresty Corp	1:20,000
2,654,924	509037	2.1	219	81995	41998	Dean Patterson	Foresty Corp	1:20,000
6,634,714	509037	2.1	220	81995	41998	Dean Patterson	Foresty Corp	1:20,000
10,613,629	512037	2.1	221	101991	61998	P. Vansickle	SRC	1:15,000
5,817,343	512037	2.1	222	101991	61998	P. Vansickle	SRC	1:15,000
62,439,198	512037	2.1	223	101991	61998	P. Vansickle	SRC	1:15,000
15,921,462	512037	2.1	224	101991	61998	P. Vansickle	SRC	1:15,000
4,096,715	510031	2.1	225	101991	81995	Elisha Cahoon	Forestry Corp	1:15,000
29,537,249	510031	2.1	226	101991	81995	Elisha Cahoon	Forestry Corp	1:15,000
19,210,880	510031	2.1	227	101991	81995	Elisha Cahoon	Forestry Corp	1:15,000
18,428,268	512035	2.1	229	81996	21998	P. Vansickle	SRC	1:15,000
23,992,204	512035	2.1	230	81996	21998	P. Vansickle	SRC	1:15,000
3,617,519	508035	2.1	235	81996	21999	Dean Patterson	Forestry Corp	1:15,000
200,468	508035	2.1	236	81996	21999	Dean Patterson	Forestry Corp	1:15,000
3,421,164	508035	2.1	237	81996	21999	Dean Patterson	Forestry Corp	1:15,000
7,369,920	508035	2.1	238	81996	21999	Dean Patterson	Forestry Corp	1:15,000
1,086,531	508035	2.1	239	81996	71998	Dean Patterson	Forestry Corp	1:15,000
3,591,474	508035	2.1	240	81996	21999	Dean Patterson	Forestry Corp	1:15,000
806,084	508035	2.1	241	81996	21999	Dean Patterson	Forestry Corp	1:15,000
466,583	508035	2.1	242	81996	21999	Dean Patterson	Forestry Corp	1:15,000
47,425	508035	2.1	243	81996	21999	Dean Patterson	Forestry Corp	1:15,000
262,032	508035	2.1	244	81996	21999	Dean Patterson	Forestry Corp	1:15,000
115,316	508035	2.1	245	81996	21999	Dean Patterson	Forestry Corp	1:15,000
246,607	508035	2.1	246	81996	21999	Dean Patterson	Forestry Corp	1:15,000
187,985	508035	2.1	247	81996	21999	Dean Patterson	Forestry Corp	1:15,000
951,091	508035	2.1	248	81996	21999	Dean Patterson	Forestry Corp	1:15,000
15,703	508035	2.1	249	81996	21999	Dean Patterson	Forestry Corp	1:15,000

AREA	TOWNSHIP	AVI VERSION	MAP SHEET	PHOTO DATE	INTERPRE. DATE	INTERPRETER	COMPANY	PHOTO SCALE
1,257,623	508035	2.1	251	81996	21999	Dean Patterson	Forestry Corp	1:15,000
440,700	508035	2.1	252	81996	21999	Dean Patterson	Forestry Corp	1:15,000
3,965,377	508035	2.1	253	81996	21999	Dean Patterson	Forestry Corp	1:15,000
145,476	508035	2.1	254	81996	21999	Dean Patterson	Forestry Corp	1:15,000
32,352,132	508035	2.1	255	81996	21999	Dean Patterson	Forestry Corp	1:15,000
7,550,561	508035	2.1	256	81996	21999	Dean Patterson	Forestry Corp	1:15,000
3,860,580	508035	2.1	257	81996	21999	Dean Patterson	Forestry Corp	1:15,000
88,215	508035	2.1	258	81996	21999	Dean Patterson	Forestry Corp	1:15,000
14,745,847	508035	2.1	259	81996	21999	Dean Patterson	Forestry Corp	1:15,000
607,201	515037	2.1	270	101991	31993	Dean Patterson	Forestry Corp	1:15,000
7,705,117	510038	2.1	271	101991	51998	M. Florchuk	SRC	1:15,000
417,037	510038	2.1	272	101991	51998	M. Florchuk	SRC	1:15,000
337,276	510038	2.1	273	101991	51998	M. Florchuk	SRC	1:15,000
2,473,819	510038	2.1	274	101991	51998	M. Florchuk	SRC	1:15,000
21,528,147	510038	2.1	275	101991	51998	M. Florchuk	SRC	1:15,000
43,001,915	510038	2.1	276	101991	51998	M. Florchuk	SRC	1:15,000
968,409	510038	2.1	277	101991	51998	Dean Patterson	Forestry Corp	1:15,000
3,481,535	510038	2.1	278	101991	51998	Dean Patterson	Forestry Corp	1:15,000
53,496	510038	2.1	279	101991	51998	Dean Patterson	Forestry Corp	1:15,000
14,583,121	510038	2.1	280	101991	51998	Dean Patterson	Forestry Corp	1:15,000
61,272	513039	2.1	281	101993	71995	Alisha Cahoon	Forestry Corp	1:15,000
6,370,386	514039	2.1	282	101991	21999	Karen Boida	Forestry Corp	1:15,000
15,811,459	513038	2.1	282	101991	61998	P. Vansickle	SRC	1:15,000
5,256,033	508032	2.1	284	81996	51998	Derek Fisher	SRC	1:15,000
32,685,421	509033	2.1	285	101991	101998	Dean Patterson	Forestry Corp	1:15,000
59,753,128	508033	2.1	286	101991	61996	Dean Patterson	Forestry Corp	1:15,000
11,265,815	508033	2.1	287	101991	101998	Dean Patterson	Forestry Corp	1:15,000
16,206,731	509033	2.1	287	10991	61996	Dean Patterson	Forestry Corp	1:15,000
19,422,170	508032	2.1	288	101991	61996	Dean Patterson	Forestry Corp	1:15,000
26,906,180	509033	2.1	288	81996	31997	Dean Patterson	Forestry Corp	1:15,000
10,863,230	510034	2.1	289	81996	31997	Dean Patterson	Forestry Corp	1:15,000
31,624,772	514042	2.1	290	51986	111995	Dean Patterson	Forestry Corp	1:15,000
47,454,625	515041	2.1	292	81996	41998	Don Ens	SRC	1:15,000
185,013	515041	2.1	293	81996	41998	Don Ens	SRC	1:15,000

AREA	TOWNSHIP	AVI VERSION	MAP SHEET	PHOTO DATE	INTERPRE. DATE	INTERPRETER	COMPANY	PHOTO SCALE
3,328,117	515041	2.1	294	81996	31998	Dean Patterson	Forestry Corp	1:15,000
28,644,498	510032	2.1	295	101991	11999	Rob Mienzer	Forestry Corp	1:15,000
70,607,900	510034	2.1	295	81996	31997	Dean Patterson	Forestry Corp	1:15,000
12,781,639	514040	2.1	296	71986	121996	Dean Patterson	Forestry Corp	1:15,000
19,057,454	509033	2.1	297	101991	121998	Rob Meinzer	Forestry Corp	1:15,000
23,817,549	515040	2.1	297	81996	61998	Dean Patterson	Forestry Corp	1:15,000
24,585,372	510032	2.1	298	101991	11999	Rob Mienzer	Forestry Corp	1:15,000
20,749,065	511037	2.1	300	101991	61998	P.Vansickle	SRC	1:15,000
12,847,548	514037	2.1	301	101991	31996	Dean Patterson	Forestry Corp	1:15,000
8,213,011	510032	2.1	302	101991	11999	Rob Mienzer	Forestry Corp	1:15,000
1,702,533	510032	2.1	303	101991	11999	Rob Mienzer	Forestry Corp	1:15,000
24,833,221	510032	2.1	304	101991	11999	Rob Mienzer	Forestry Corp	1:15,000
39,847,818	513037	2.1	305	101991	31995	Dean Patterson	Forestry Corp	1:15,000
26,690,605	513037	2.1	306	101991	31995	Dean Patterson	Forestry Corp	1:15,000
9,521,075	510034	2.1	307	81996	21998	P. Vansickle	SRC	1:15,000
14,101,757	512039	2.1	308	101993	61998	M. Florchuk	SRC	1:15,000
12,315,531	513040	2.1	309	101993	61998	M. Florchuk	SRC	1:15,000
36,950,225	512039	2.1	310	101993	61998	M. Florchuk	SRC	1:15,000
18,975,877	513037	2.1	330	101991	61998	P. Vansickle	SRC	1:15,000
18,336,442	511040	2.1	331	101993	11995	Dean Patterson	Forestry Corp	1:15,000
22,446,351	512039	2.1	332	101993	11995	Dean Patterson	Forestry Corp	1:15,000
8,685,557	509030	2.1	335	81996	61998	Derek Fisher	SRC	1:15,000
36,946,506	516041	2.1	338	91997	71996	Dean Patterson	Forestry Corp	1:15,000
45,062,124	516042	2.1	340	81996	61998	P. Vansickle	SRC	1:15,000
18,911,562	516041	2.1	341	81996	61998	P. Vansickle	SRC	1:15,000
11,287,903	512036	2.1	345	81996	41998	P. Vansickle	SRC	1:15,000
8,744,422	513037	2.1	346	101991	61998	P. Vansickle	SRC	1:15,000
2,016,754	510034	2.1	347	81996	51997	Dean Patterson	Forestry Corp	1:15,000
3,280,847	511036	2.1	348	81996	41998	P.Vansickle	SRC	1:15,000
313,187	513036	2.1	350	101991	61998	P.Vansickle	SRC	1:15,000
1,407,367	514039	2.1	355	101993	61998	M. Florchuk	SRC	1:15,000
7,046,157	512039	2.1	364	101993	61998	M. Florchuk	SRC	1:15,000
9,173,715	511040	2.1	365	101993	61998	M. Florchuk	SRC	1:15,000
793,740	511037	2.1	370	101991	61998	P.Vansickle	SRC	1:15,000

AREA	TOWNSHIP	AVI VERSION	MAP SHEET	PHOTO DATE	INTERPRE. DATE	INTERPRETER	COMPANY	PHOTO SCALE
40,329	510033	2.1	371	101991	121998	Rob Mienzer	Forestry Corp	1:15,000
4,395,132	511032	2.1	372	101991	11999	Rob Mienzer	Forestry Corp	1:15,000
14,263,063	514041	2.1	375	71986	121996	Dean Patterson	Forestry Corp	1:15,000
6,917,376	513041	2.1	376	71986	121996	Dean Patterson	Forestry Corp	1:15,000
46,456,585	514041	2.1	377	81996	31998	Dean Patterson	Forestry Corp	1:15,000
8,425,225	512039	2.1	378	101991	21999	Karen Boida	Forestry Corp	1:15,000
541,409	513037	2.1	379	101991	61998	P. Vansickle	SRC	1:15,000
31,737,259	510036	2.1	380	101991	51998	Dean Patterson	Forestry Corp	1:15,000
7,238,791	510036	2.1	381	101991	51998	Dean Patterson	Forestry Corp	1:15,000
23,839,686	510036	2.1	383	81996	41998	P.Vansickle	SRC	1:15,000
1,478,548	510034	2.1	384	81996	121997	Dean Patterson	Forestry Corp	1:15,000
223,220	510034	2.1	385	81996	121997	Dean Patterson	Forestry Corp	1:15,000
5,317,927	510036	2.1	390	101991	51998	Dean Patterson	Forestry Corp	1:15,000
536,428	514038	2.1	391	101991	61998	P. Vansickle	SRC	1:15,000
25,399,673	510036	2.1	392	81996	71998	Dean Patterson	Forestry Corp	1:15,000
34,010,978	514041	2.1	395	51986	111995	Dean Patterson	Forestry Corp	1:15,000
26,495,776	510037	2.1	396	101991	51998	Dean Patterson	Forestry Corp	1:15,000
12,131,116	512042	2.1	397	81996	101997	Dean Patterson	Forestry Corp	1:15,000
25,556,195	513041	2.1	397	81996	31998	Dean Patterson	Forestry Corp	1:15,000
47,373,333	512041	2.1	401	81996	101997	Dean Patterson	Forestry Corp	1:15,000
57,030,224	513041	2.1	402	81996	101997	Dean Patterson	Forestry Corp	1:15,000
21,667,894	511038	2.1	404	101991	51998	Dean Patterson	Forestry Corp	1:15,000
212,292	512039	2.1	405	101993	61998	M.Florchuk	SRC	1:15,000
33,458,328	511038	2.1	406	101991	51998	M. Florchuk	SRC	1:15,000
52,914,936	512038	2.1	406	101991	51996		Timberline	1:15,000
6,157,606	512039	2.1	407	101991	51996		Timberline	1:15,000
3,684,881	511038	2.1	408	101991	61998	P. Vansickle	SRC	1:15,000
5,646,912	511039	2.1	408	101991	51996		Timberline	1:15,000
20,413,011	511038	2.1	409	101991	51996		Timberline	1:15,000
1,515,951	510036	2.1	410	81996	51997	Dean Patterson	Forestry Corp	1:15,000
3,829,021	513038	2.1	410	101991	51996		Timberline	1:15,000
2,201,590	511038	2.1	411	10991	51996		Timberline	1:15,000
2,225,946	511038	2.1	411	100993	61998	M.Florchuk	SRC	1:15,000
925,939	512040	2.1	412	101993	61998	M. Florchuk	SRC	1:15,000

AREA	TOWNSHIP	AVI VERSION	MAP SHEET	PHOTO DATE	INTERPRE. DATE	INTERPRETER	COMPANY	PHOTO SCALE
42,060,691	511037	2.1	412	101991	51996		Timberline	1:15,000
474,814	514040	2.1	413	101993	111996	Dean Patterson	Forestry Corp	1:15,000
33,278	514041	2.1	414	81996	91997	Dean Patterson	Forestry Corp	1:15,000
10,576,805	511038	2.1	415	101991	51998	M.Florchuk	SRC	1:15,000
5,280,968	513041	2.1	500	51986	111995	Dean Patterson	Forestry Corp	1:15,000
2,687,616	515042	2.1	501	81996	41998	Don Ens	SRC	1:15,000
782,518	514039	2.1	502	101991	101991	Karen Boida	Forestry Corp	1:15,000
15,402	514039	2.1	503	101991	101999	Karen Boida	Forestry Corp	1:15,000
12,577,067	513036	2.1	504	81996	41998	P. Vansickle	SRC	1:15,000
17,375,641	510037	2.1	505	101991	51995	Dean Patterson	Forestry Corp	1:15,000
27,169,326	510037	2.1	506	101991	51995	Dean Patterson	Forestry Corp	1:15,000
715,184	509036	2.1	507	81996	71998	Dean Patterson	Forestry Corp	1:15,000
19,285,106	509036	2.1	508	81996	71998	Dean Patterson	Forestry Corp	1:15,000

Table 2

AREA	TOWNSHIP	AVI VERSION	MAP SHEET	PHOTO DATE	INTERPRE. DATE	INTERPRETER	COMPANY	PHOTO SCALE
643,463	512041	2.1	R.W.	1995	1996	Forestry Corp	Forestry Corp	1:15,000
1,012,672	511040	2.1	R.W.	1995	1996	Forestry Corp	Forestry Corp	1:15,000
1,074,842	511041	2.1	R.W.	1995	1996	Forestry Corp	Forestry Corp	1:15,000
1,433,398	512041	2.1	R.W.	1995	1996	Forestry Corp	Forestry Corp	1:15,000
2,120,034	511041	2.1	R.W.	1995	1996	Forestry Corp	Forestry Corp	1:15,000
2,180,314	511042	2.1	R.W.	1995	1996	Forestry Corp	Forestry Corp	1:15,000
2,848,855	511041	2.1	R.W.	1995	1996	Forestry Corp	Forestry Corp	1:15,000
20,070,856	511040	2.1	R.W.	1995	1996	Forestry Corp	Forestry Corp	1:15,000

Table 3

AREA	TOWNSHIP	AVI VERSION	MAP SHEET	PHOTO DATE	INTERPRE. DATE	INTERPRETER	COMPANY	PHOTO SCALE
10,081	507035	2.1	Soft Copy	92001	2001	John Barbeau	Olympic Resource Mngt.	1:30,000
11,875	512038	2.1	Soft Copy	92001	2001	John Barbeau	Olympic Resource Mngt.	1:30,000
12,559	507035	2.1	Soft Copy	92001	2001	John Barbeau	Olympic Resource Mngt.	1:30,000
14,230	507036	2.1	Soft Copy	92001	2001	John Barbeau	Olympic Resource Mngt.	1:30,000
14,628	506035	2.1	Soft Copy	92001	2001	John Barbeau	Olympic Resource Mngt.	1:30,000
18,060	509035	2.1	Soft Copy	92001	2001	John Barbeau	Olympic Resource Mngt.	1:30,000
19,353	508036	2.1	Soft Copy	92001	2001	John Barbeau	Olympic Resource Mngt.	1:30,000
27,741	508032	2.1	Soft Copy	92001	2001	John Barbeau	Olympic Resource Mngt.	1:30,000
32,271	510037	2.1	Soft Copy	92001	2001	John Barbeau	Olympic Resource Mngt.	1:30,000
45,588	510038	2.1	Soft Copy	92001	2001	John Barbeau	Olympic Resource Mngt.	1:30,000
51,789	508035	2.1	Soft Copy	92001	2001	John Barbeau	Olympic Resource Mngt.	1:30,000
54,132	515041	2.1	Soft Copy	92001	2001	John Barbeau	Olympic Resource Mngt.	1:30,000
54,445	509035	2.1	Soft Copy	92001	2001	John Barbeau	Olympic Resource Mngt.	1:30,000
55,103	508036	2.1	Soft Copy	92001	2001	John Barbeau	Olympic Resource Mngt.	1:30,000
70,554	508037	2.1	Soft Copy	92001	2001	John Barbeau	Olympic Resource Mngt.	1:30,000
71,468	509040	2.1	Soft Copy	92001	2001	John Barbeau	Olympic Resource Mngt.	1:30,000
74,394	509038	2.1	Soft Copy	92001	2001	John Barbeau	Olympic Resource Mngt.	1:30,000
80,566	508039	2.1	Soft Copy	92001	2001	John Barbeau	Olympic Resource Mngt.	1:30,000
82,829	512039	2.1	Soft Copy	92001	2001	John Barbeau	Olympic Resource Mngt.	1:30,000
88,012	508036	2.1	Soft Copy	92001	2001	John Barbeau	Olympic Resource Mngt.	1:30,000
111,386	507036	2.1	Soft Copy	92001	2001	John Barbeau	Olympic Resource Mngt.	1:30,000
114,257	508039	2.1	Soft Copy	92001	2001	John Barbeau	Olympic Resource Mngt.	1:30,000
136,038	507036	2.1	Soft Copy	92001	2001	John Barbeau	Olympic Resource Mngt.	1:30,000
151,354	508036	2.1	Soft Copy	92001	2001	John Barbeau	Olympic Resource Mngt.	1:30,000
157,503	508036	2.1	Soft Copy	92001	2001	John Barbeau	Olympic Resource Mngt.	1:30,000
161,127	509039	2.1	Soft Copy	92001	2001	John Barbeau	Olympic Resource Mngt.	1:30,000
161,657	511032	2.1	Soft Copy	92001	2001	John Barbeau	Olympic Resource Mngt.	1:30,000
161,748	508037	2.1	Soft Copy	92001	2001	John Barbeau	Olympic Resource Mngt.	1:30,000

AREA	TOWNSHIP	AVI VERSION	MAP SHEET	PHOTO DATE	INTERPRE. DATE	INTERPRETER	COMPANY	PHOTO SCALE
165,351	509040	2.1	Soft Copy	92001	2001	John Barbeau	Olympic Resource Mngt.	1:30,000
173,028	506035	2.1	Soft Copy	92001	2001	John Barbeau	Olympic Resource Mngt.	1:30,000
174,531	509040	2.1	Soft Copy	92001	2001	John Barbeau	Olympic Resource Mngt.	1:30,000
182,863	508036	2.1	Soft Copy	92001	2001	John Barbeau	Olympic Resource Mngt.	1:30,000
187,332	507035	2.1	Soft Copy	92001	2001	John Barbeau	Olympic Resource Mngt.	1:30,000
216,867	510039	2.1	Soft Copy	92001	2001	John Barbeau	Olympic Resource Mngt.	1:30,000
217,072	508037	2.1	Soft Copy	92001	2001	John Barbeau	Olympic Resource Mngt.	1:30,000
218,621	509039	2.1	Soft Copy	92001	2001	John Barbeau	Olympic Resource Mngt.	1:30,000
329,937	508039	2.1	Soft Copy	92001	2001	John Barbeau	Olympic Resource Mngt.	1:30,000
358,527	508039	2.1	Soft Copy	92001	2001	John Barbeau	Olympic Resource Mngt.	1:30,000
434,864	507037	2.1	Soft Copy	92001	2001	John Barbeau	Olympic Resource Mngt.	1:30,000
452,960	510029	2.1	Soft Copy	92001	2001	John Barbeau	Olympic Resource Mngt.	1:30,000
482,096	509040	2.1	Soft Copy	92001	2001	John Barbeau	Olympic Resource Mngt.	1:30,000
485,466	508037	2.1	Soft Copy	92001	2001	John Barbeau	Olympic Resource Mngt.	1:30,000
490,436	508036	2.1	Soft Copy	92001	2001	John Barbeau	Olympic Resource Mngt.	1:30,000
551,003	509039	2.1	Soft Copy	92001	2001	John Barbeau	Olympic Resource Mngt.	1:30,000
601,066	509039	2.1	Soft Copy	92001	2001	John Barbeau	Olympic Resource Mngt.	1:30,000
602,917	509040	2.1	Soft Copy	92001	2001	John Barbeau	Olympic Resource Mngt.	1:30,000
612,094	509038	2.1	Soft Copy	92001	2001	John Barbeau	Olympic Resource Mngt.	1:30,000
626,933	509039	2.1	Soft Copy	92001	2001	John Barbeau	Olympic Resource Mngt.	1:30,000
627,957	511038	2.1	Soft Copy	92001	2001	John Barbeau	Olympic Resource Mngt.	1:30,000
644,779	507037	2.1	Soft Copy	92001	2001	John Barbeau	Olympic Resource Mngt.	1:30,000
645,434	506033	2.1	Soft Copy	92001	2001	John Barbeau	Olympic Resource Mngt.	1:30,000
646,374	506035	2.1	Soft Copy	92001	2001	John Barbeau	Olympic Resource Mngt.	1:30,000
646,596	509038	2.1	Soft Copy	92001	2001	John Barbeau	Olympic Resource Mngt.	1:30,000
646,690	506034	2.1	Soft Copy	92001	2001	John Barbeau	Olympic Resource Mngt.	1:30,000
647,038	507036	2.1	Soft Copy	92001	2001	John Barbeau	Olympic Resource Mngt.	1:30,000
647,345	507037	2.1	Soft Copy	92001	2001	John Barbeau	Olympic Resource Mngt.	1:30,000
647,353	511040	2.1	Soft Copy	92001	2001	John Barbeau	Olympic Resource Mngt.	1:30,000
650,360	508037	2.1	Soft Copy	92001	2001	John Barbeau	Olympic Resource Mngt.	1:30,000
659,661	507037	2.1	Soft Copy	92001	2001	John Barbeau	Olympic Resource Mngt.	1:30,000
659,695	509038	2.1	Soft Copy	92001	2001	John Barbeau	Olympic Resource Mngt.	1:30,000
660,408	508039	2.1	Soft Copy	92001	2001	John Barbeau	Olympic Resource Mngt.	1:30,000
660,433	507037	2.1	Soft Copy	92001	2001	John Barbeau	Olympic Resource Mngt.	1:30,000

AREA	TOWNSHIP	AVI VERSION	MAP SHEET	PHOTO DATE	INTERPRE. DATE	INTERPRETER	COMPANY	PHOTO SCALE
661,211	507035	2.1	Soft Copy	92001	2001	John Barbeau	Olympic Resource Mngt.	1:30,000
661,377	508038	2.1	Soft Copy	92001	2001	John Barbeau	Olympic Resource Mngt.	1:30,000
661,651	507037	2.1	Soft Copy	92001	2001	John Barbeau	Olympic Resource Mngt.	1:30,000
663,174	507036	2.1	Soft Copy	92001	2001	John Barbeau	Olympic Resource Mngt.	1:30,000
663,194	508037	2.1	Soft Copy	92001	2001	John Barbeau	Olympic Resource Mngt.	1:30,000
663,409	508037	2.1	Soft Copy	92001	2001	John Barbeau	Olympic Resource Mngt.	1:30,000
664,165	507037	2.1	Soft Copy	92001	2001	John Barbeau	Olympic Resource Mngt.	1:30,000
664,299	508036	2.1	Soft Copy	92001	2001	John Barbeau	Olympic Resource Mngt.	1:30,000
664,375	506035	2.1	Soft Copy	92001	2001	John Barbeau	Olympic Resource Mngt.	1:30,000
666,541	507035	2.1	Soft Copy	92001	2001	John Barbeau	Olympic Resource Mngt.	1:30,000
667,016	507036	2.1	Soft Copy	92001	2001	John Barbeau	Olympic Resource Mngt.	1:30,000
677,796	506033	2.1	Soft Copy	92001	2001	John Barbeau	Olympic Resource Mngt.	1:30,000
687,700	511040	2.1	Soft Copy	92001	2001	John Barbeau	Olympic Resource Mngt.	1:30,000
701,486	509039	2.1	Soft Copy	92001	2001	John Barbeau	Olympic Resource Mngt.	1:30,000
748,068	509039	2.1	Soft Copy	92001	2001	John Barbeau	Olympic Resource Mngt.	1:30,000
830,457	509039	2.1	Soft Copy	92001	2001	John Barbeau	Olympic Resource Mngt.	1:30,000
906,977	507037	2.1	Soft Copy	92001	2001	John Barbeau	Olympic Resource Mngt.	1:30,000
968,462	507037	2.1	Soft Copy	92001	2001	John Barbeau	Olympic Resource Mngt.	1:30,000
988,184	507036	2.1	Soft Copy	92001	2001	John Barbeau	Olympic Resource Mngt.	1:30,000
1,014,076	507036	2.1	Soft Copy	92001	2001	John Barbeau	Olympic Resource Mngt.	1:30,000
1,015,230	509039	2.1	Soft Copy	92001	2001	John Barbeau	Olympic Resource Mngt.	1:30,000
1,176,983	507036	2.1	Soft Copy	92001	2001	John Barbeau	Olympic Resource Mngt.	1:30,000
1,231,384	507037	2.1	Soft Copy	92001	2001	John Barbeau	Olympic Resource Mngt.	1:30,000
1,251,706	507036	2.1	Soft Copy	92001	2001	John Barbeau	Olympic Resource Mngt.	1:30,000
1,305,214	509038	2.1	Soft Copy	92001	2001	John Barbeau	Olympic Resource Mngt.	1:30,000
1,305,273	508037	2.1	Soft Copy	92001	2001	John Barbeau	Olympic Resource Mngt.	1:30,000
1,305,639	506034	2.1	Soft Copy	92001	2001	John Barbeau	Olympic Resource Mngt.	1:30,000
1,313,662	507037	2.1	Soft Copy	92001	2001	John Barbeau	Olympic Resource Mngt.	1:30,000
1,314,398	509038	2.1	Soft Copy	92001	2001	John Barbeau	Olympic Resource Mngt.	1:30,000
1,324,122	509039	2.1	Soft Copy	92001	2001	John Barbeau	Olympic Resource Mngt.	1:30,000
1,325,113	508036	2.1	Soft Copy	92001	2001	John Barbeau	Olympic Resource Mngt.	1:30,000
1,326,622	508036	2.1	Soft Copy	92001	2001	John Barbeau	Olympic Resource Mngt.	1:30,000
1,329,141	507036	2.1	Soft Copy	92001	2001	John Barbeau	Olympic Resource Mngt.	1:30,000
1,329,193	509038	2.1	Soft Copy	92001	2001	John Barbeau	Olympic Resource Mngt.	1:30,000

AREA	TOWNSHIP	AVI VERSION	MAP SHEET	PHOTO DATE	INTERPRE. DATE	INTERPRETER	COMPANY	PHOTO SCALE
1,345,733	507036	2.1	Soft Copy	92001	2001	John Barbeau	Olympic Resource Mngt.	1:30,000
1,351,583	509040	2.1	Soft Copy	92001	2001	John Barbeau	Olympic Resource Mngt.	1:30,000
1,436,919	507037	2.1	Soft Copy	92001	2001	John Barbeau	Olympic Resource Mngt.	1:30,000
1,526,747	508037	2.1	Soft Copy	92001	2001	John Barbeau	Olympic Resource Mngt.	1:30,000
1,643,695	507036	2.1	Soft Copy	92001	2001	John Barbeau	Olympic Resource Mngt.	1:30,000
1,692,391	508037	2.1	Soft Copy	92001	2001	John Barbeau	Olympic Resource Mngt.	1:30,000
1,737,372	509031	2.1	Soft Copy	92001	2001	John Barbeau	Olympic Resource Mngt.	1:30,000
1,966,965	508036	2.1	Soft Copy	92001	2001	John Barbeau	Olympic Resource Mngt.	1:30,000
1,971,868	508036	2.1	Soft Copy	92001	2001	John Barbeau	Olympic Resource Mngt.	1:30,000
1,973,232	508038	2.1	Soft Copy	92001	2001	John Barbeau	Olympic Resource Mngt.	1:30,000
1,993,234	508037	2.1	Soft Copy	92001	2001	John Barbeau	Olympic Resource Mngt.	1:30,000
2,002,923	507037	2.1	Soft Copy	92001	2001	John Barbeau	Olympic Resource Mngt.	1:30,000
2,149,084	509039	2.1	Soft Copy	92001	2001	John Barbeau	Olympic Resource Mngt.	1:30,000
2,261,531	509040	2.1	Soft Copy	92001	2001	John Barbeau	Olympic Resource Mngt.	1:30,000
2,266,365	511040	2.1	Soft Copy	92001	2001	John Barbeau	Olympic Resource Mngt.	1:30,000
2,268,147	507035	2.1	Soft Copy	92001	2001	John Barbeau	Olympic Resource Mngt.	1:30,000
2,313,294	507037	2.1	Soft Copy	92001	2001	John Barbeau	Olympic Resource Mngt.	1:30,000
2,501,871	509039	2.1	Soft Copy	92001	2001	John Barbeau	Olympic Resource Mngt.	1:30,000
2,580,889	508036	2.1	Soft Copy	92001	2001	John Barbeau	Olympic Resource Mngt.	1:30,000
2,602,747	507034	2.1	Soft Copy	92001	2001	John Barbeau	Olympic Resource Mngt.	1:30,000
2,614,199	507033	2.1	Soft Copy	92001	2001	John Barbeau	Olympic Resource Mngt.	1:30,000
2,616,137	507035	2.1	Soft Copy	92001	2001	John Barbeau	Olympic Resource Mngt.	1:30,000
2,618,719	507036	2.1	Soft Copy	92001	2001	John Barbeau	Olympic Resource Mngt.	1:30,000
2,648,250	507037	2.1	Soft Copy	92001	2001	John Barbeau	Olympic Resource Mngt.	1:30,000
2,678,421	507034	2.1	Soft Copy	92001	2001	John Barbeau	Olympic Resource Mngt.	1:30,000
2,760,692	507035	2.1	Soft Copy	92001	2001	John Barbeau	Olympic Resource Mngt.	1:30,000
3,187,842	508036	2.1	Soft Copy	92001	2001	John Barbeau	Olympic Resource Mngt.	1:30,000
3,256,046	507034	2.1	Soft Copy	92001	2001	John Barbeau	Olympic Resource Mngt.	1:30,000
3,279,918	506034	2.1	Soft Copy	92001	2001	John Barbeau	Olympic Resource Mngt.	1:30,000
3,312,225	507037	2.1	Soft Copy	92001	2001	John Barbeau	Olympic Resource Mngt.	1:30,000
3,323,988	507034	2.1	Soft Copy	92001	2001	John Barbeau	Olympic Resource Mngt.	1:30,000
3,409,993	506035	2.1	Soft Copy	92001	2001	John Barbeau	Olympic Resource Mngt.	1:30,000
3,429,990	508037	2.1	Soft Copy	92001	2001	John Barbeau	Olympic Resource Mngt.	1:30,000
3,546,596	511039	2.1	Soft Copy	92001	2001	John Barbeau	Olympic Resource Mngt.	1:30,000

AREA	TOWNSHIP	AVI VERSION	MAP SHEET	PHOTO DATE	INTERPRE. DATE	INTERPRETER	COMPANY	PHOTO SCALE
3,830,047	510039	2.1	Soft Copy	92001	2001	John Barbeau	Olympic Resource Mngt.	1:30,000
3,893,073	509038	2.1	Soft Copy	92001	2001	John Barbeau	Olympic Resource Mngt.	1:30,000
3,913,976	508036	2.1	Soft Copy	92001	2001	John Barbeau	Olympic Resource Mngt.	1:30,000
3,944,972	507036	2.1	Soft Copy	92001	2001	John Barbeau	Olympic Resource Mngt.	1:30,000
3,965,889	507036	2.1	Soft Copy	92001	2001	John Barbeau	Olympic Resource Mngt.	1:30,000
4,004,157	508036	2.1	Soft Copy	92001	2001	John Barbeau	Olympic Resource Mngt.	1:30,000
4,028,693	508036	2.1	Soft Copy	92001	2001	John Barbeau	Olympic Resource Mngt.	1:30,000
4,173,879	508037	2.1	Soft Copy	92001	2001	John Barbeau	Olympic Resource Mngt.	1:30,000
4,373,168	509039	2.1	Soft Copy	92001	2001	John Barbeau	Olympic Resource Mngt.	1:30,000
4,434,434	509038	2.1	Soft Copy	92001	2001	John Barbeau	Olympic Resource Mngt.	1:30,000
4,618,934	508036	2.1	Soft Copy	92001	2001	John Barbeau	Olympic Resource Mngt.	1:30,000
4,647,503	509038	2.1	Soft Copy	92001	2001	John Barbeau	Olympic Resource Mngt.	1:30,000
4,710,056	508037	2.1	Soft Copy	92001	2001	John Barbeau	Olympic Resource Mngt.	1:30,000
4,723,142	513042	2.1	Soft Copy	92001	2001	John Barbeau	Olympic Resource Mngt.	1:30,000
4,873,574	508037	2.1	Soft Copy	92001	2001	John Barbeau	Olympic Resource Mngt.	1:30,000
4,918,918	508039	2.1	Soft Copy	92001	2001	John Barbeau	Olympic Resource Mngt.	1:30,000
5,299,422	506034	2.1	Soft Copy	92001	2001	John Barbeau	Olympic Resource Mngt.	1:30,000
5,308,177	510039	2.1	Soft Copy	92001	2001	John Barbeau	Olympic Resource Mngt.	1:30,000
5,469,476	512040	2.1	Soft Copy	92001	2001	John Barbeau	Olympic Resource Mngt.	1:30,000
5,671,619	508037	2.1	Soft Copy	92001	2001	John Barbeau	Olympic Resource Mngt.	1:30,000
5,951,493	509031	2.1	Soft Copy	92001	2001	John Barbeau	Olympic Resource Mngt.	1:30,000
6,019,408	506035	2.1	Soft Copy	92001	2001	John Barbeau	Olympic Resource Mngt.	1:30,000
6,456,656	510039	2.1	Soft Copy	92001	2001	John Barbeau	Olympic Resource Mngt.	1:30,000
6,982,541	509039	2.1	Soft Copy	92001	2001	John Barbeau	Olympic Resource Mngt.	1:30,000
7,039,747	511039	2.1	Soft Copy	92001	2001	John Barbeau	Olympic Resource Mngt.	1:30,000
7,183,464	510039	2.1	Soft Copy	92001	2001	John Barbeau	Olympic Resource Mngt.	1:30,000
7,663,850	509038	2.1	Soft Copy	92001	2001	John Barbeau	Olympic Resource Mngt.	1:30,000
7,856,947	507033	2.1	Soft Copy	92001	2001	John Barbeau	Olympic Resource Mngt.	1:30,000
8,021,753	506035	2.1	Soft Copy	92001	2001	John Barbeau	Olympic Resource Mngt.	1:30,000
8,514,787	506033	2.1	Soft Copy	92001	2001	John Barbeau	Olympic Resource Mngt.	1:30,000
9,193,628	506033	2.1	Soft Copy	92001	2001	John Barbeau	Olympic Resource Mngt.	1:30,000
10,017,428	509038	2.1	Soft Copy	92001	2001	John Barbeau	Olympic Resource Mngt.	1:30,000
10,372,732	510039	2.1	Soft Copy	92001	2001	John Barbeau	Olympic Resource Mngt.	1:30,000
10,404,307	507035	2.1	Soft Copy	92001	2001	John Barbeau	Olympic Resource Mngt.	1:30,000

AREA	TOWNSHIP	AVI VERSION	MAP SHEET	PHOTO DATE	INTERPRE. DATE	INTERPRETER	COMPANY	PHOTO SCALE
10,467,546	510030	2.1	Soft Copy	92001	2001	John Barbeau	Olympic Resource Mngt.	1:30,000
10,550,302	507036	2.1	Soft Copy	92001	2001	John Barbeau	Olympic Resource Mngt.	1:30,000
10,931,298	510039	2.1	Soft Copy	92001	2001	John Barbeau	Olympic Resource Mngt.	1:30,000
11,010,575	510039	2.1	Soft Copy	92001	2001	John Barbeau	Olympic Resource Mngt.	1:30,000
11,537,429	506034	2.1	Soft Copy	92001	2001	John Barbeau	Olympic Resource Mngt.	1:30,000
12,801,591	509038	2.1	Soft Copy	92001	2001	John Barbeau	Olympic Resource Mngt.	1:30,000
14,027,282	508036	2.1	Soft Copy	92001	2001	John Barbeau	Olympic Resource Mngt.	1:30,000
15,151,023	510040	2.1	Soft Copy	92001	2001	John Barbeau	Olympic Resource Mngt.	1:30,000
16,209,942	511040	2.1	Soft Copy	92001	2001	John Barbeau	Olympic Resource Mngt.	1:30,000
17,164,558	510039	2.1	Soft Copy	92001	2001	John Barbeau	Olympic Resource Mngt.	1:30,000
17,638,585	508036	2.1	Soft Copy	92001	2001	John Barbeau	Olympic Resource Mngt.	1:30,000
17,676,254	506035	2.1	Soft Copy	92001	2001	John Barbeau	Olympic Resource Mngt.	1:30,000
18,088,006	506034	2.1	Soft Copy	92001	2001	John Barbeau	Olympic Resource Mngt.	1:30,000
18,842,321	509039	2.1	Soft Copy	92001	2001	John Barbeau	Olympic Resource Mngt.	1:30,000
21,770,687	506034	2.1	Soft Copy	92001	2001	John Barbeau	Olympic Resource Mngt.	1:30,000
23,104,735	510039	2.1	Soft Copy	92001	2001	John Barbeau	Olympic Resource Mngt.	1:30,000
25,173,534	507035	2.1	Soft Copy	92001	2001	John Barbeau	Olympic Resource Mngt.	1:30,000
27,655,445	506035	2.1	Soft Copy	92001	2001	John Barbeau	Olympic Resource Mngt.	1:30,000
28,621,430	507035	2.1	Soft Copy	92001	2001	John Barbeau	Olympic Resource Mngt.	1:30,000
28,953,316	507034	2.1	Soft Copy	92001	2001	John Barbeau	Olympic Resource Mngt.	1:30,000
31,887,012	509038	2.1	Soft Copy	92001	2001	John Barbeau	Olympic Resource Mngt.	1:30,000
34,042,793	508037	2.1	Soft Copy	92001	2001	John Barbeau	Olympic Resource Mngt.	1:30,000
40,808,598	507034	2.1	Soft Copy	92001	2001	John Barbeau	Olympic Resource Mngt.	1:30,000
40,955,180	509039	2.1	Soft Copy	92001	2001	John Barbeau	Olympic Resource Mngt.	1:30,000
50,357,594	509030	2.1	Soft Copy	92001	2001	John Barbeau	Olympic Resource Mngt.	1:30,000

Appendix 2 - Approval Letter



Resource Data Branch

12th Floor, 9820 - 106 Street
Edmonton AB T5K 2J6

Telephone 780-427-6467
Fax 780-427-1215

October 6, 2003

Mr. Peter Denney, Planning Manager
Sunpine Forest Products Ltd.
Bag #1
Sundre, AB
T0M 1X0

Dear Mr. Denney:

Alberta Sustainable Resource Development staff completed a review of the Sunpine's Alberta Vegetation Inventory data submitted for forest management unit R10. The data successfully met all audit requirements requested by Resource Data Branch. The final audit report is being compiled.

If you have any questions regarding this process, please feel free to contact Daryl McEwan at (780) 415-0010.

Sincerely,

A handwritten signature in black ink, appearing to read "Phil Mackenzie".

Phil Mackenzie P. Eng., Acting Director
Resource Data Branch

c: Doug Sklar, Director
Forest Management Branch

Don Harrison, Director
Forest Protection Branch

