

---

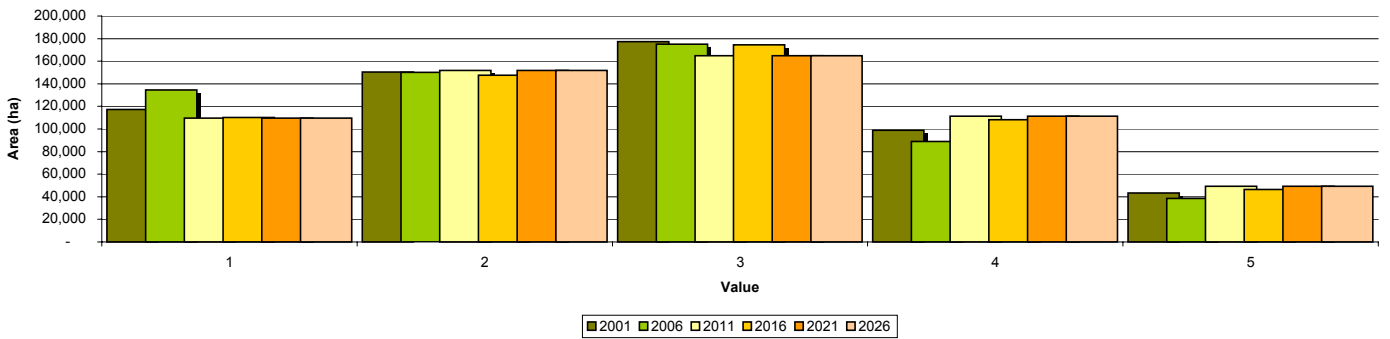
**Appendix 8 Grizzly Bear Modelling Output**

---

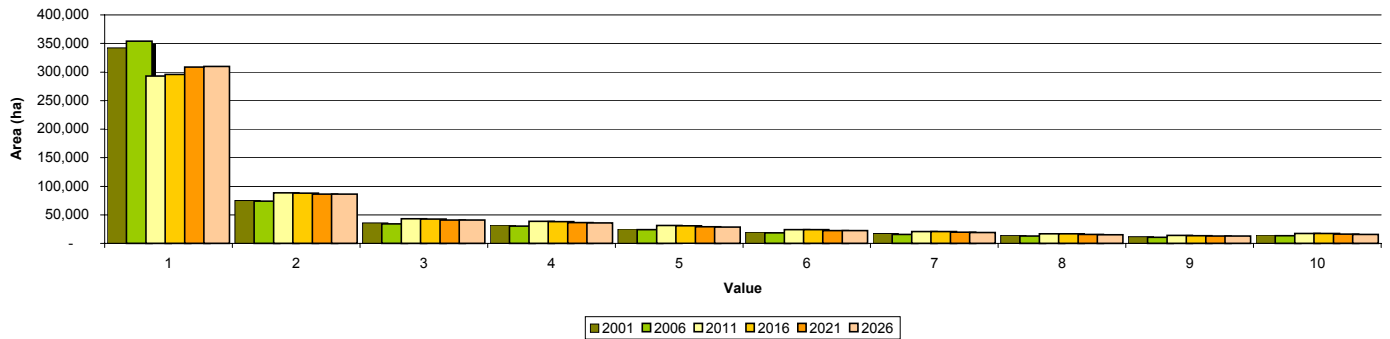
FMU Summary

Attribute	Value	2001	2006		2011		2016		2021		2026	
		Area	Area	Change From Previous	Area	Change From Previous	Area	Change From Previous	Area	Change From Previous	Area	Change From Previous
Resource Selectivity Function	1	117,235	134,450	14.7%	109,741	-18.4%	110,299	0.5%	109,741	-0.5%	109,741	0.0%
	2	150,308	150,072	-0.2%	151,932	1.2%	147,504	-2.9%	151,932	3.0%	151,932	0.0%
	3	177,435	174,985	-1.4%	164,837	-5.8%	174,556	5.9%	164,837	-5.6%	164,837	0.0%
	4	98,803	88,898	-10.0%	111,300	25.2%	108,296	-2.7%	111,300	2.8%	111,300	0.0%
	5	43,225	38,600	-10.7%	49,200	27.5%	46,352	-5.8%	49,200	6.1%	49,200	0.0%
Mortality Risk	1	342,256	353,815	3.4%	293,002	-17.2%	295,557	0.9%	308,507	4.4%	309,916	0.5%
	2	75,209	73,862	-1.8%	88,769	20.2%	87,987	-0.9%	86,181	-2.1%	86,221	0.0%
	3	35,798	34,280	-4.2%	43,208	26.0%	42,745	-1.1%	40,902	-4.3%	40,761	-0.3%
	4	31,667	30,102	-4.9%	38,585	28.2%	38,172	-1.1%	36,218	-5.1%	35,980	-0.7%
	5	25,429	23,896	-6.0%	31,104	30.2%	30,806	-1.0%	29,036	-5.7%	28,789	-0.9%
	6	19,853	18,566	-6.5%	24,215	30.4%	24,000	-0.9%	22,594	-5.9%	22,376	-1.0%
	7	17,275	15,961	-7.6%	20,877	30.8%	20,723	-0.7%	19,420	-6.3%	19,236	-0.9%
	8	13,937	12,840	-7.9%	16,730	30.3%	16,614	-0.7%	15,543	-6.4%	15,383	-1.0%
	9	11,570	10,708	-7.5%	13,788	28.8%	13,721	-0.5%	12,909	-5.9%	12,793	-0.9%
	10	14,423	13,447	-6.8%	17,197	27.9%	17,092	-0.6%	16,105	-5.8%	15,960	-0.9%
Safe Harbour	1	129,100	145,455	12.7%	129,973	-10.6%	132,553	2.0%	128,480	-3.1%	129,130	0.5%
	2	98,784	105,413	6.7%	91,992	-12.7%	91,874	-0.1%	95,745	4.2%	96,254	0.5%
	3	113,272	112,566	-0.6%	90,045	-20.0%	96,748	7.4%	95,754	-1.0%	95,918	0.2%
	4	63,715	53,925	-15.4%	63,327	17.4%	59,557	-6.0%	65,476	9.9%	65,499	0.0%
	5	19,268	16,380	-15.0%	19,077	16.5%	16,763	-12.1%	20,485	22.2%	20,560	0.4%

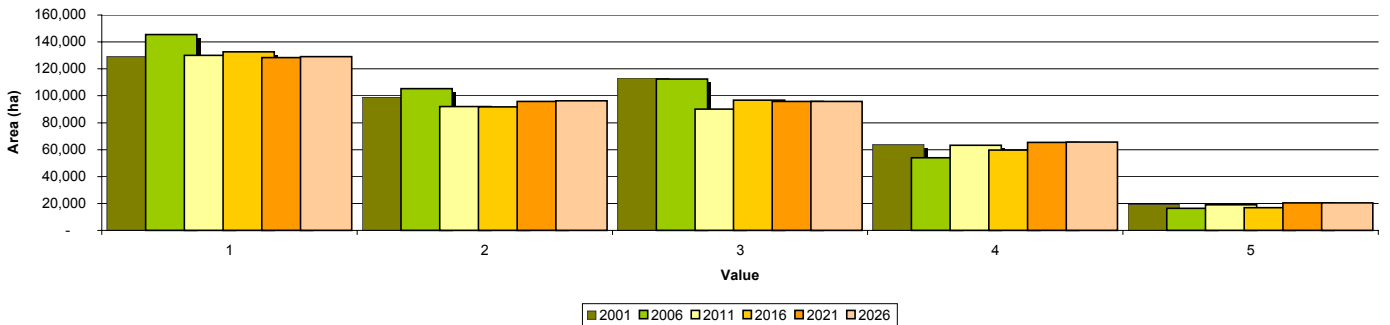
Resource Selectivity Function



Mortality Risk



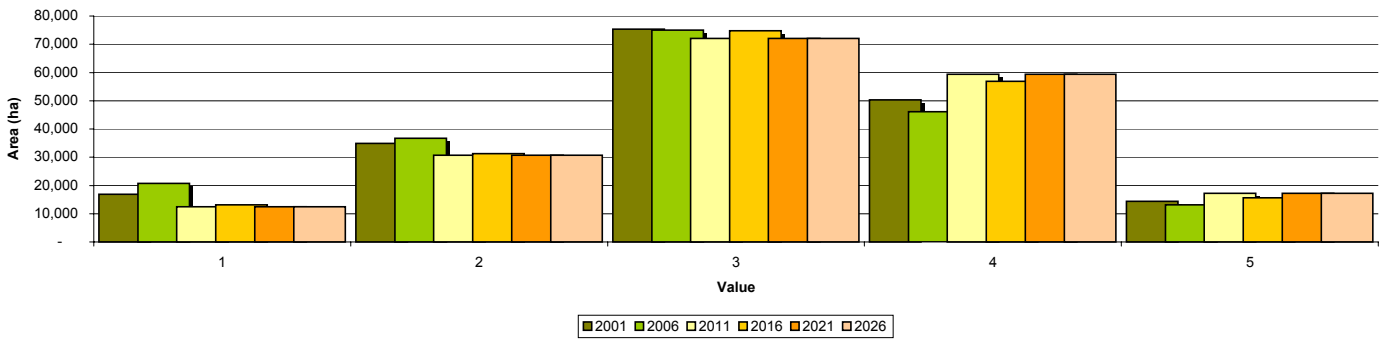
Safe Harbour



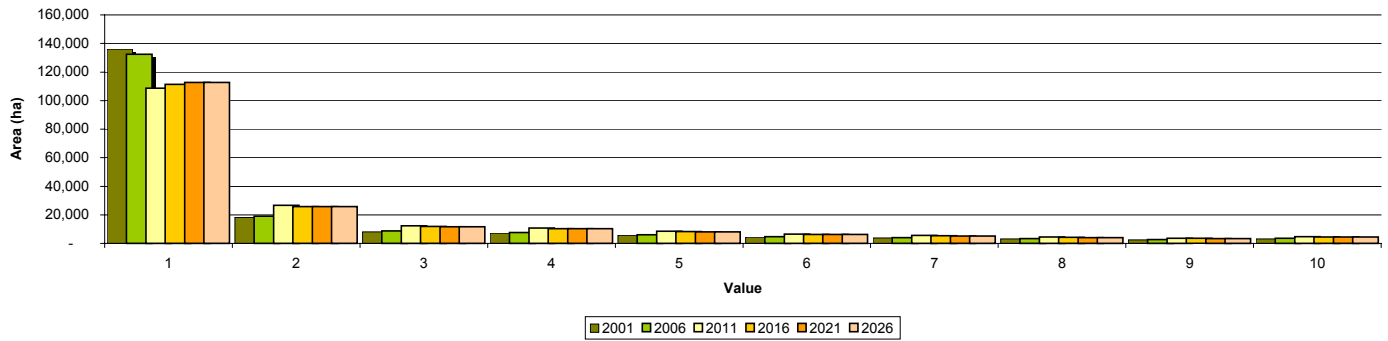
Secure Summary

Attribute	Value	2001	2006		2011		2016		2021		2026	
		Area	Area	Change From Previous	Area	Change From Previous	Area	Change From Previous	Area	Change From Previous	Area	Change From Previous
Resource Selectivity Function	1	16,851	20,736	23.1%	12,419	-40.1%	13,190	6.2%	12,419	-5.8%	12,419	0.0%
	2	34,846	36,747	5.5%	30,695	-16.5%	31,256	1.8%	30,695	-1.8%	30,695	0.0%
	3	75,363	75,006	-0.5%	72,055	-3.9%	74,834	3.9%	72,055	-3.7%	72,055	0.0%
	4	50,314	46,143	-8.3%	59,374	28.7%	56,848	-4.3%	59,374	4.4%	59,374	0.0%
	5	14,347	13,088	-8.8%	17,180	31.3%	15,593	-9.2%	17,180	10.2%	17,180	0.0%
Mortality Risk	1	136,026	132,377	-2.7%	108,744	-17.9%	111,293	2.3%	112,639	1.2%	112,639	0.0%
	2	18,145	18,951	4.4%	26,575	40.2%	25,799	-2.9%	25,724	-0.3%	25,724	0.0%
	3	8,033	8,633	7.5%	12,303	42.5%	11,842	-3.7%	11,714	-1.1%	11,714	0.0%
	4	7,059	7,650	8.4%	10,824	41.5%	10,406	-3.9%	10,236	-1.6%	10,236	0.0%
	5	5,626	6,080	8.1%	8,603	41.5%	8,304	-3.5%	8,110	-2.3%	8,110	0.0%
	6	4,333	4,709	8.7%	6,575	39.6%	6,362	-3.2%	6,178	-2.9%	6,178	0.0%
	7	3,762	4,029	7.1%	5,565	38.1%	5,405	-2.9%	5,215	-3.5%	5,215	0.0%
	8	3,049	3,260	6.9%	4,415	35.4%	4,305	-2.5%	4,144	-3.8%	4,144	0.0%
	9	2,488	2,644	6.3%	3,562	34.7%	3,493	-2.0%	3,386	-3.1%	3,386	0.0%
	10	3,234	3,483	7.7%	4,650	33.5%	4,545	-2.2%	4,409	-3.0%	4,409	0.0%
Safe Harbour	1	32,330	36,931	14.2%	35,294	-4.4%	36,098	2.3%	34,979	-3.1%	34,979	0.0%
	2	31,210	34,489	10.5%	27,697	-19.7%	29,066	4.9%	28,051	-3.5%	28,051	0.0%
	3	56,435	54,406	-3.6%	44,771	-17.7%	48,146	7.5%	46,031	-4.4%	46,031	0.0%
	4	34,399	28,184	-18.1%	33,747	19.7%	31,044	-8.0%	34,614	11.5%	34,614	0.0%
	5	7,288	5,675	-22.1%	6,239	9.9%	5,176	-17.0%	6,702	29.5%	6,702	0.0%

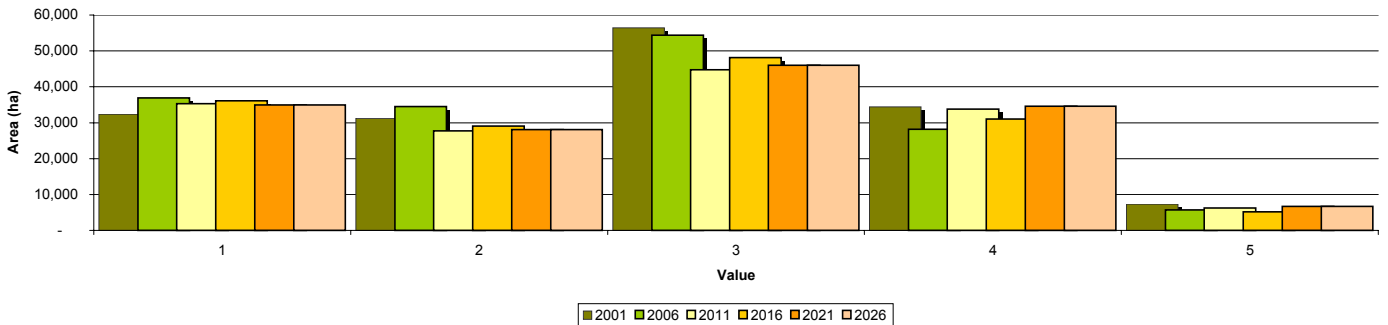
Resource Selectivity Function



Mortality Risk



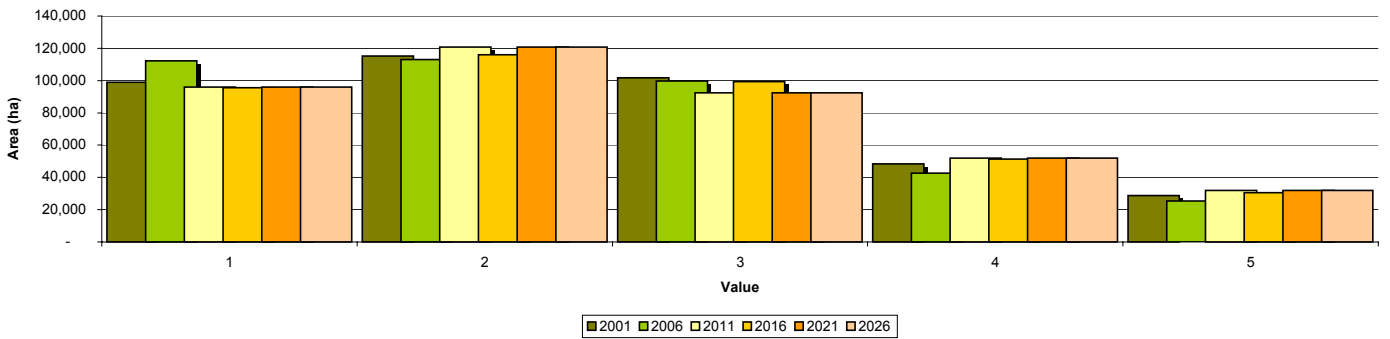
Safe Harbour



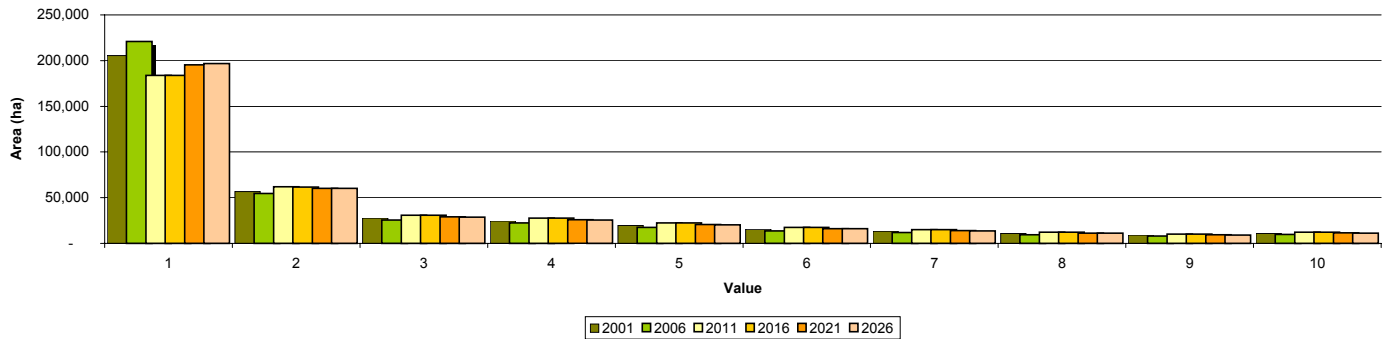
Vulnerable Summary

Attribute	Value	2001	2006		2011		2016		2021		2026	
		Area	Area	Change From Previous	Area	Change From Previous	Area	Change From Previous	Area	Change From Previous	Area	Change From Previous
Resource Selectivity Function	1	98,907	112,216	13.5%	95,938	-14.5%	95,651	-0.3%	95,938	0.3%	95,938	0.0%
	2	115,146	113,028	-1.8%	120,840	6.9%	115,912	-4.1%	120,840	4.3%	120,840	0.0%
	3	101,749	99,657	-2.1%	92,456	-7.2%	99,401	7.5%	92,456	-7.0%	92,456	0.0%
	4	48,417	42,683	-11.8%	51,856	21.5%	51,377	-0.9%	51,856	0.9%	51,856	0.0%
	5	28,725	25,360	-11.7%	31,856	25.6%	30,605	-3.9%	31,856	4.1%	31,856	0.0%
Mortality Risk	1	205,695	220,941	7.4%	183,762	-16.8%	183,767	0.0%	195,373	6.3%	196,781	0.7%
	2	56,661	54,519	-3.8%	61,803	13.4%	61,794	0.0%	60,065	-2.8%	60,104	0.1%
	3	27,575	25,455	-7.7%	30,714	20.7%	30,711	0.0%	28,995	-5.6%	28,854	-0.5%
	4	24,414	22,248	-8.9%	27,557	23.9%	27,563	0.0%	25,779	-6.5%	25,541	-0.9%
	5	19,601	17,604	-10.2%	22,290	26.6%	22,291	0.0%	20,715	-7.1%	20,468	-1.2%
	6	15,335	13,667	-10.9%	17,449	27.7%	17,448	0.0%	16,226	-7.0%	16,008	-1.3%
	7	13,318	11,733	-11.9%	15,113	28.8%	15,119	0.0%	14,006	-7.4%	13,822	-1.3%
	8	10,711	9,396	-12.3%	12,131	29.1%	12,124	-0.1%	11,215	-7.5%	11,055	-1.4%
	9	8,935	7,910	-11.5%	10,072	27.3%	10,076	0.0%	9,370	-7.0%	9,254	-1.2%
	10	11,000	9,771	-11.2%	12,354	26.4%	12,353	0.0%	11,502	-6.9%	11,357	-1.3%
Safe Harbour	1	96,152	107,947	12.3%	94,118	-12.8%	95,899	1.9%	92,942	-3.1%	93,592	0.7%
	2	67,495	70,853	5.0%	64,189	-9.4%	62,714	-2.3%	67,588	7.8%	68,097	0.8%
	3	56,826	58,150	2.3%	45,265	-22.2%	48,592	7.4%	49,714	2.3%	49,877	0.3%
	4	29,313	25,740	-12.2%	29,580	14.9%	28,513	-3.6%	30,862	8.2%	30,885	0.1%
	5	11,970	10,697	-10.6%	12,825	19.9%	11,577	-9.7%	13,771	19.0%	13,846	0.5%

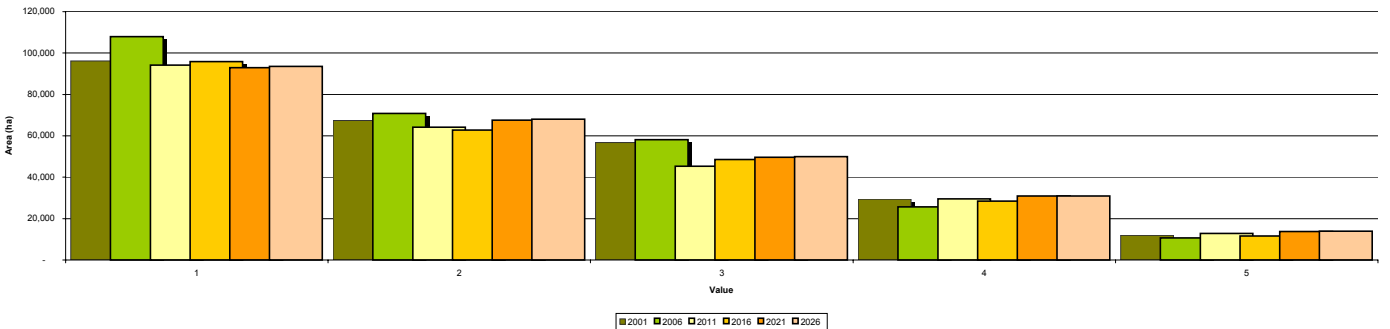
Resource Selectivity Function

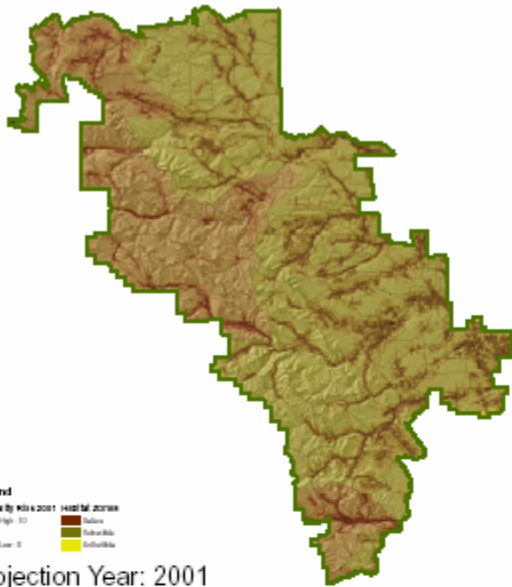


Mortality Risk



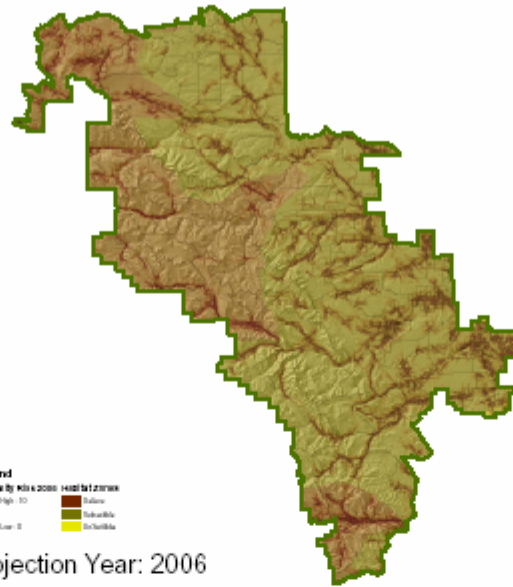
Safe Harbour





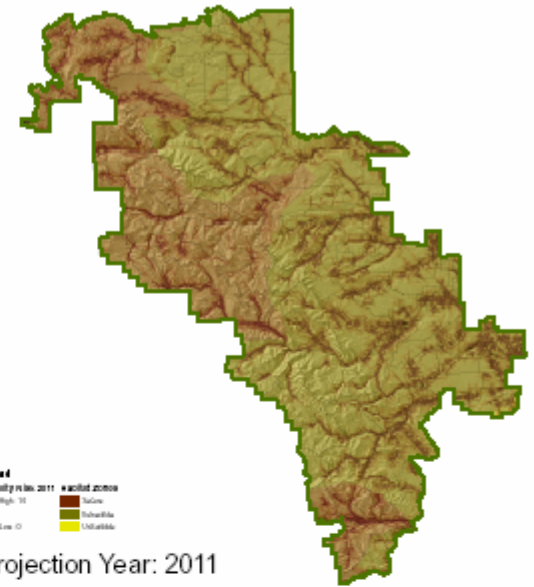
**Legend**  
 mortality risk 2001 habitat zones  
 High Risk Low Risk  
 Low Risk Substrate Substrate

Projection Year: 2001



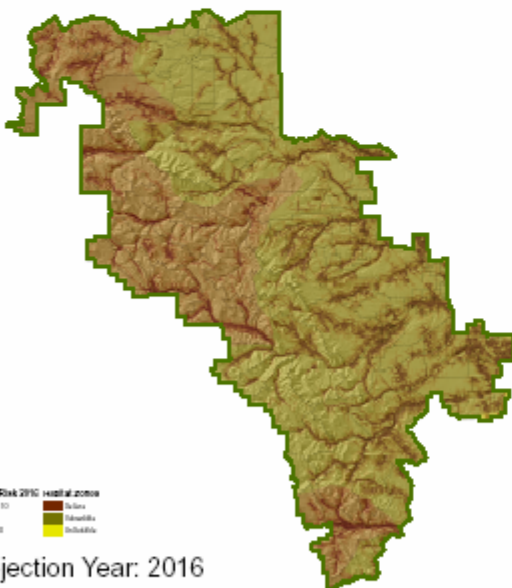
**Legend**  
 mortality risk 2006 habitat zones  
 High Risk Low Risk  
 Low Risk Substrate Substrate

Projection Year: 2006



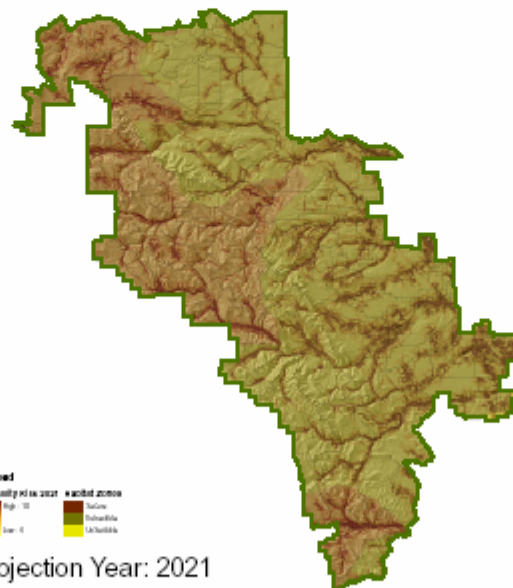
**Legend**  
 mortality risk 2011 habitat zones  
 High Risk Low Risk  
 Low Risk Substrate Substrate

Projection Year: 2011



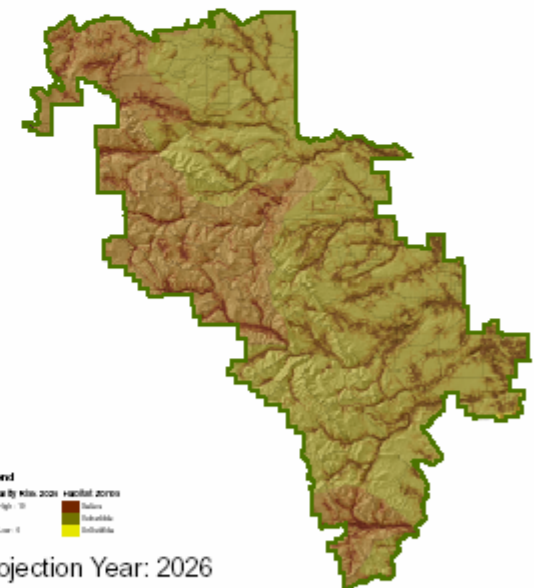
**Legend**  
 mortality risk 2016 habitat zones  
 High Risk Low Risk  
 Low Risk Substrate Substrate

Projection Year: 2016



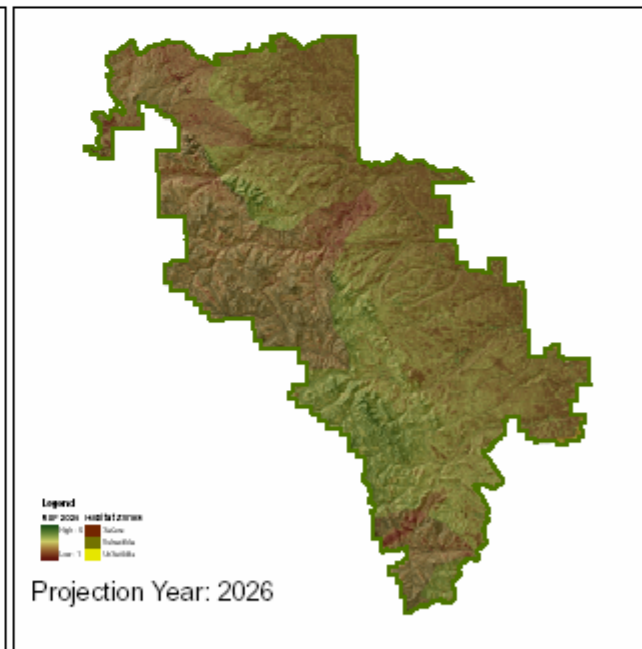
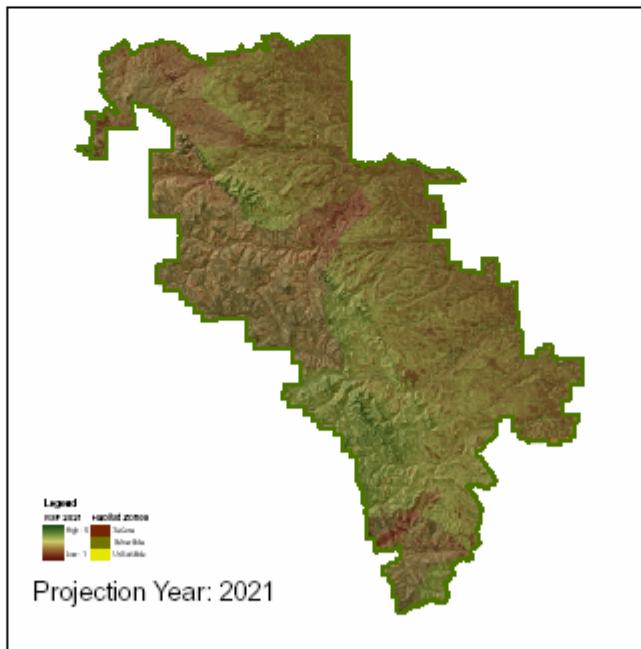
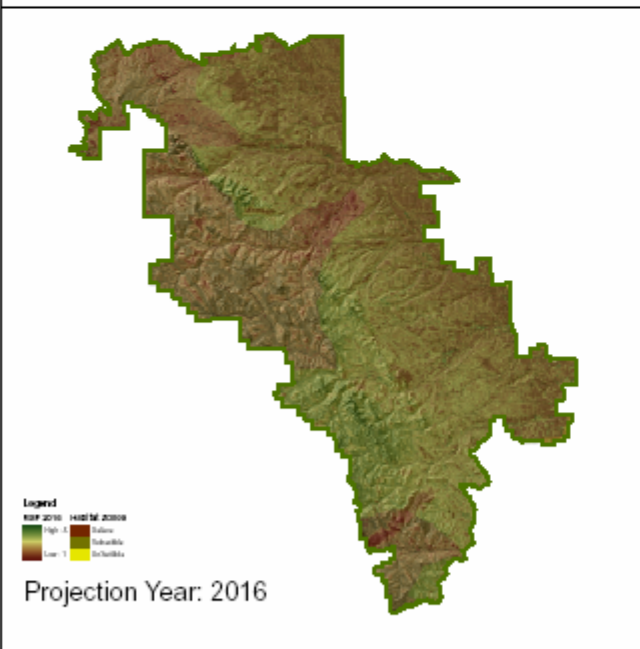
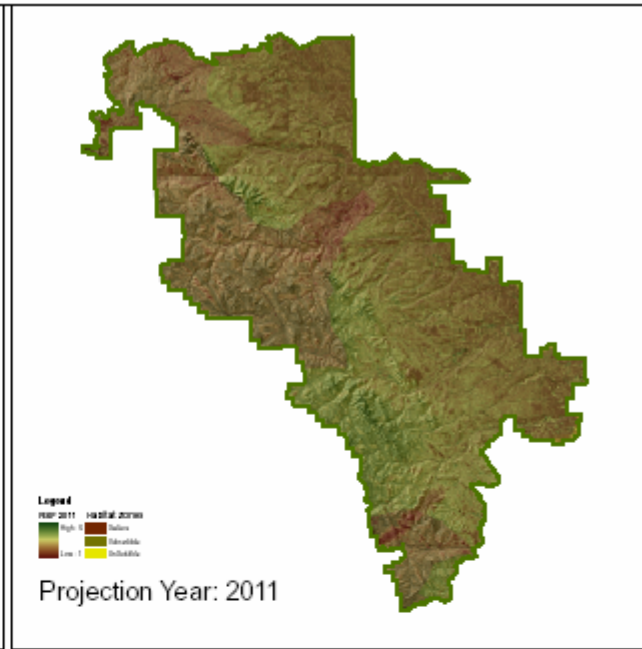
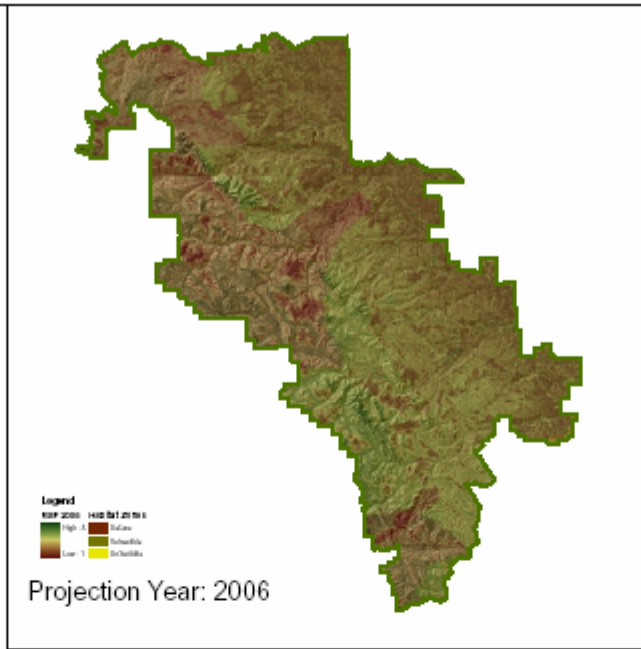
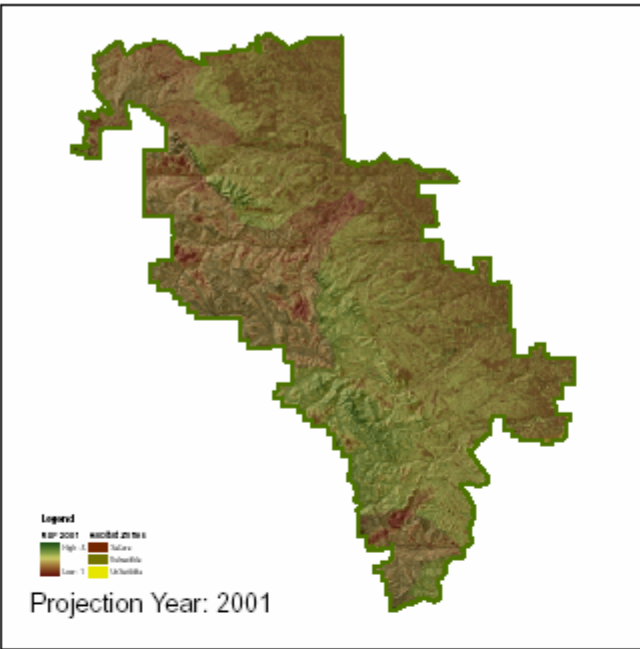
**Legend**  
 mortality risk 2021 habitat zones  
 High Risk Low Risk  
 Low Risk Substrate Substrate

Projection Year: 2021



**Legend**  
 mortality risk 2026 habitat zones  
 High Risk Low Risk  
 Low Risk Substrate Substrate

Projection Year: 2026



Sundre Forest Products  
Mountain Pine Beetle Action Plan **Resource Selectivity Function**



A division of West Fraser Mills Ltd.  
1:400,000  
Project Report 21, 2007

