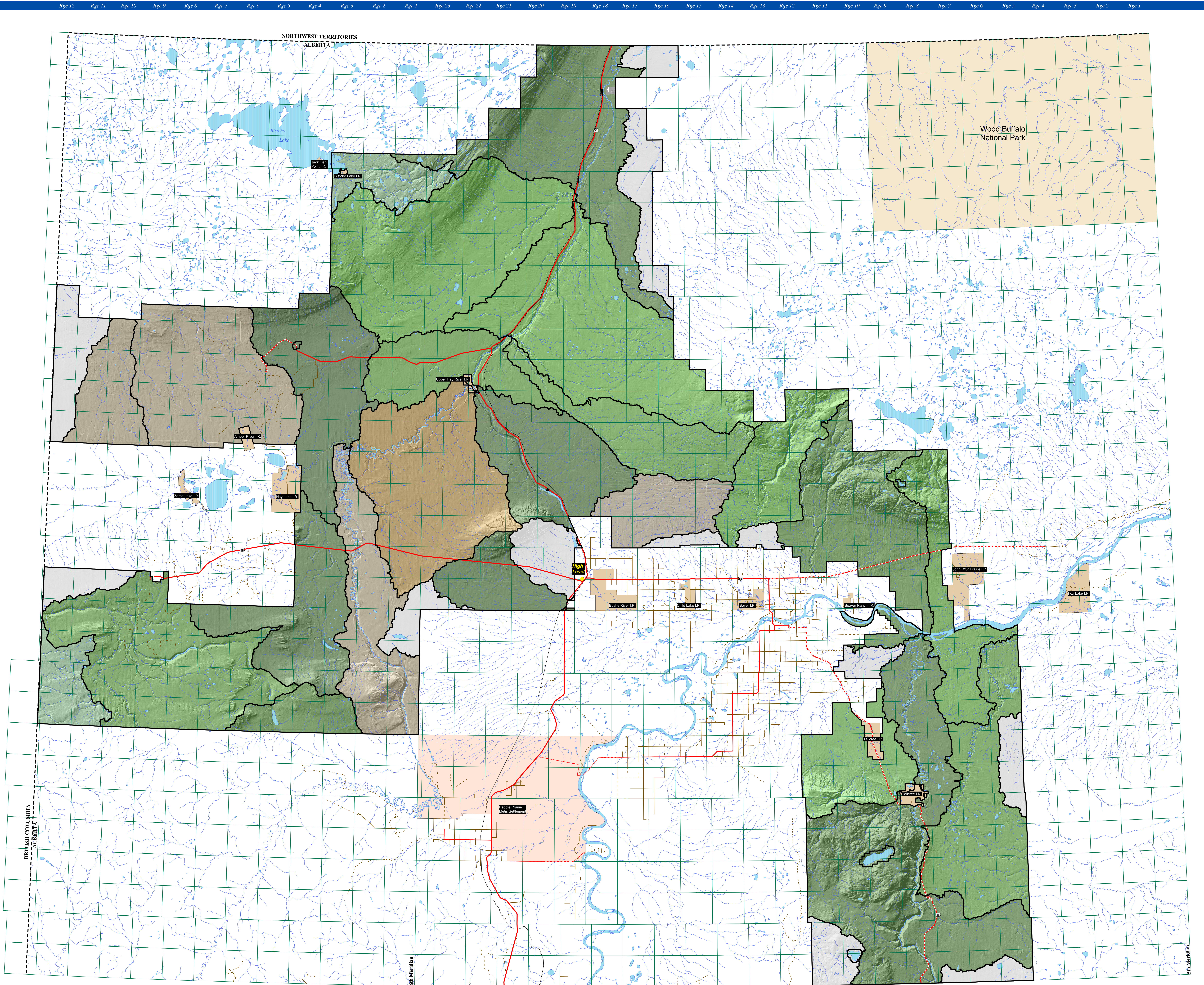
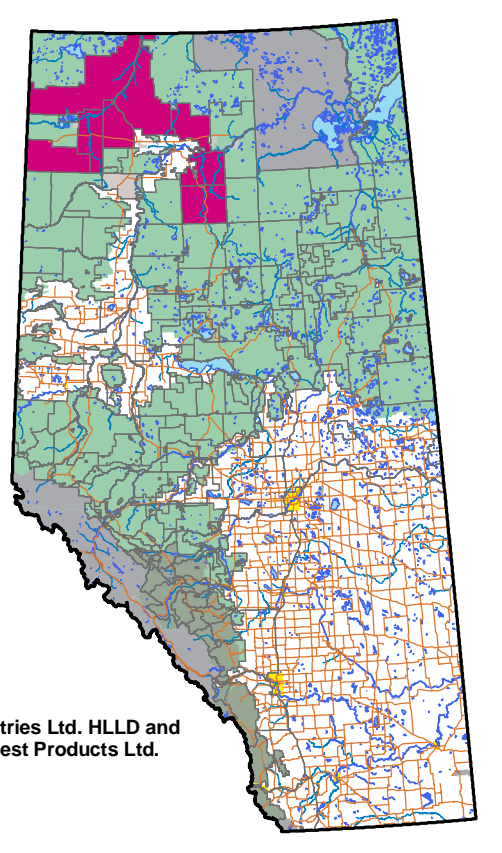


# CUMULATIVE WATERSHED DISTURBANCE AND HYDROLOGIC RECOVERY ANALYSIS

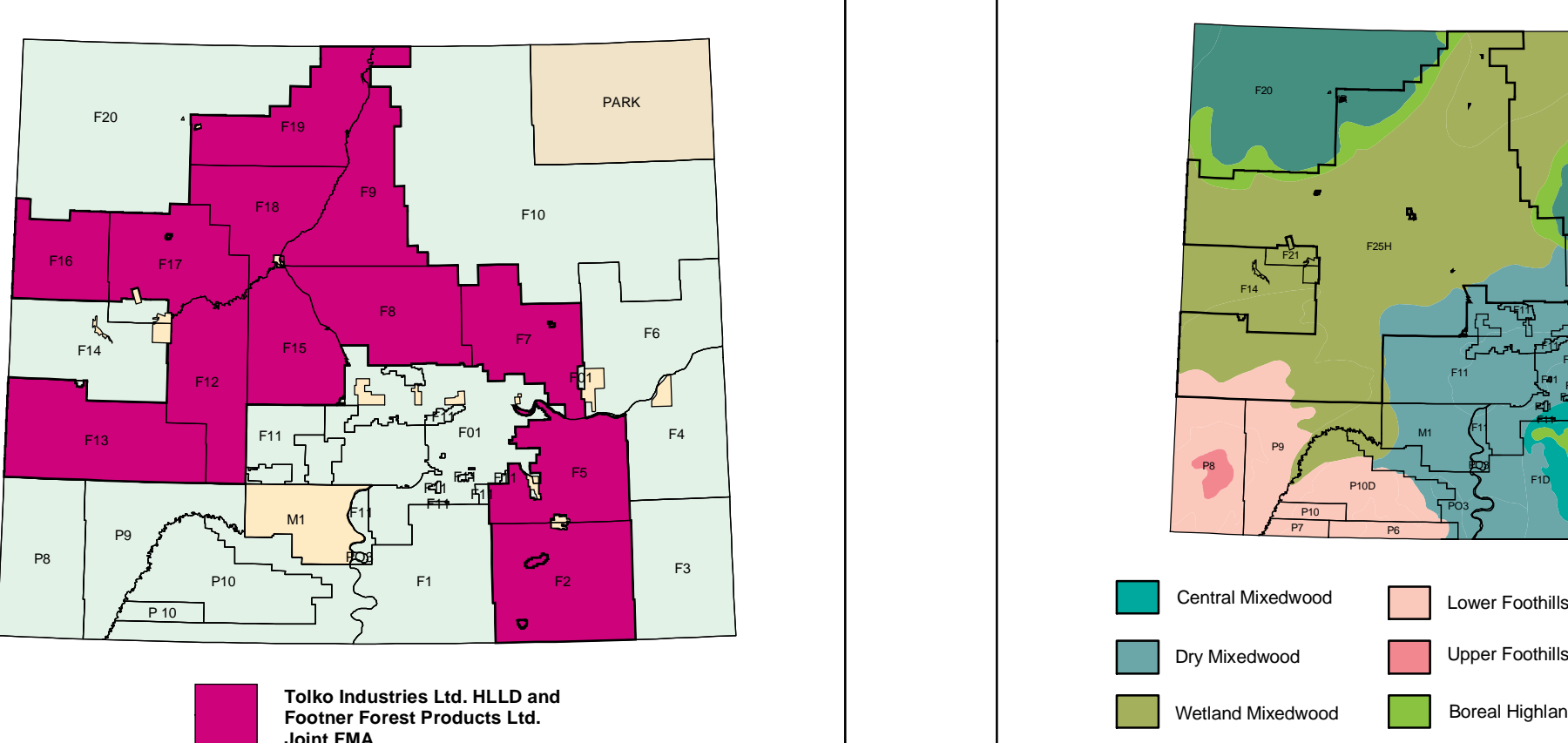
## Time: 50 Year Projection



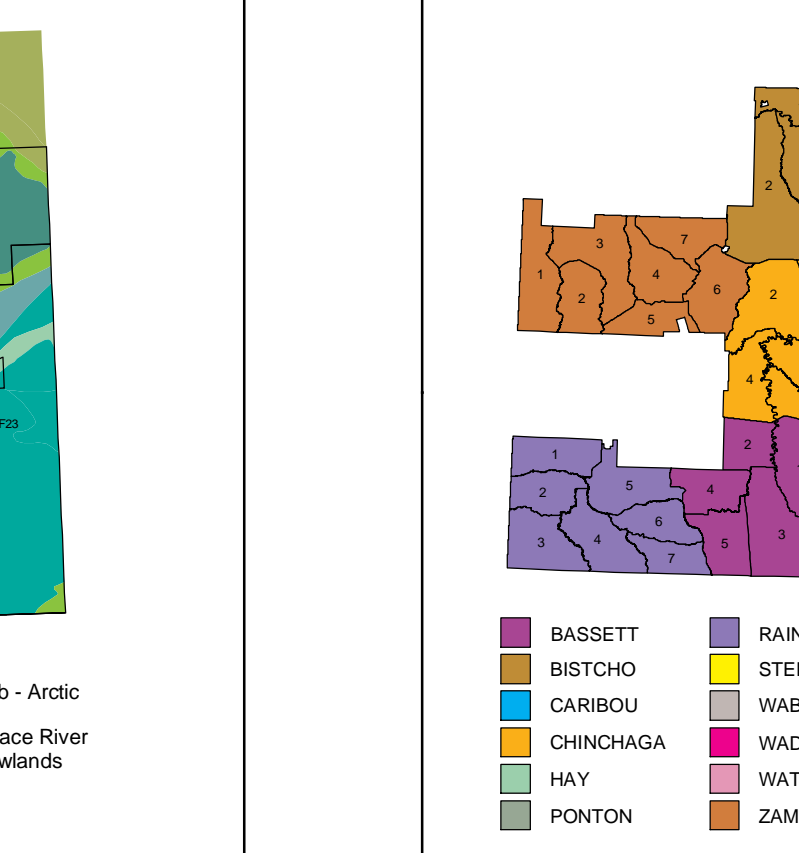
**PROVINCIAL INDEX**



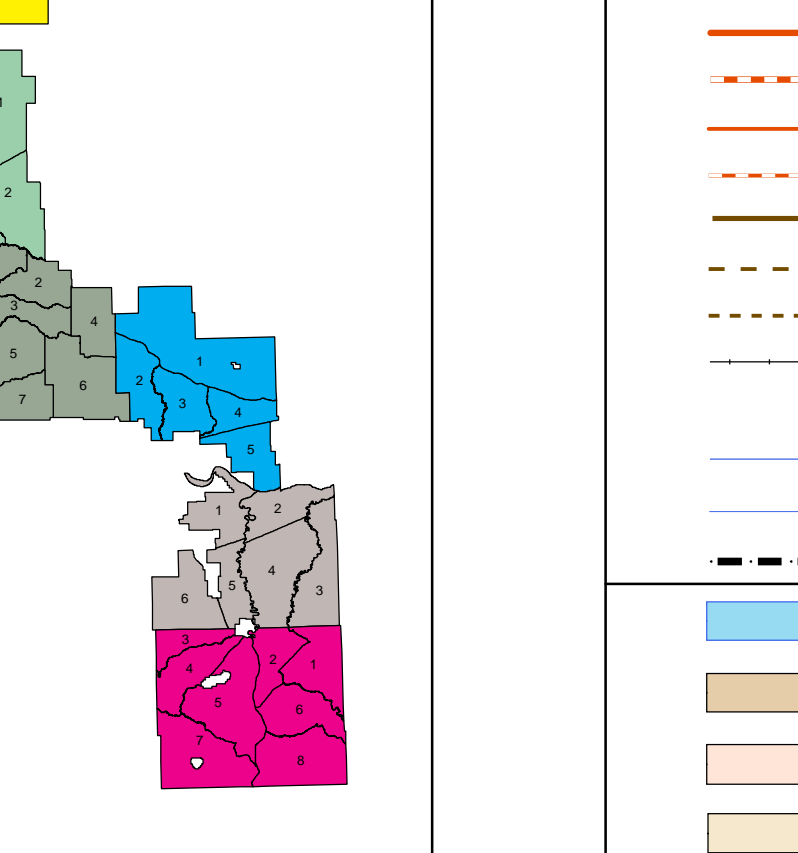
**OLD FOREST MANAGEMENT UNITS**



**NATURAL SUB-REGIONS**



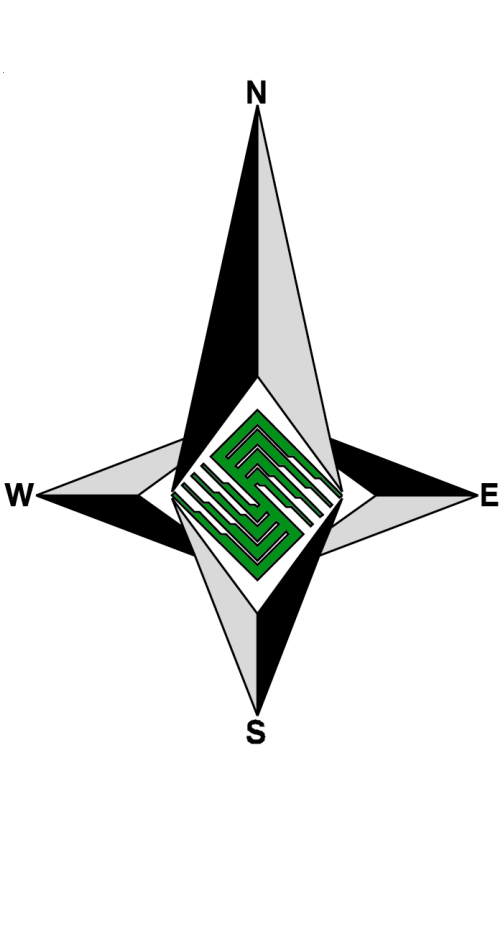
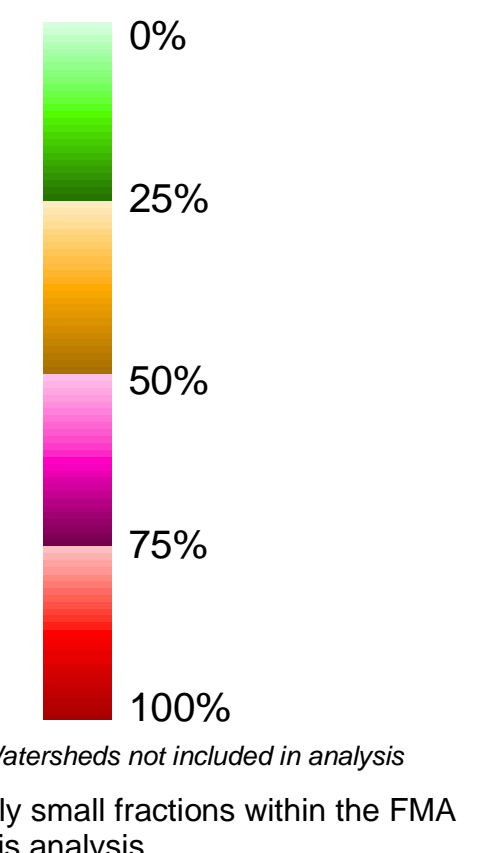
**OPERATING AREA INDEX**



**PLANIMETRIC LEGEND**



**ECA**



This analysis was derived from the Cumulative Watershed Disturbance and Hydrologic Recovery Assessment (CWHRA) process. The CWHRA process is a multi-step process that involves the collection, analysis, and interpretation of various data sources to assess the cumulative impacts of land use changes on watershed health and hydrologic recovery. The results of this analysis are presented in the form of a map and a report. The map shows the cumulative watershed disturbance and hydrologic recovery for a 50-year projection. The report provides a detailed description of the analysis process and the results of the analysis. The map and report are intended to provide decision-makers with the information they need to make informed decisions about land use planning and management in the study area.

Map Version: 1.00  
Original Map Scale: 1:300,000  
Map Date: October 7, 2003  
Map Production: Silvacom Ltd.  
Silvacom Ref: H-065  
Map File: watershed/wshed\_map\_07oct2003\_50.mxd