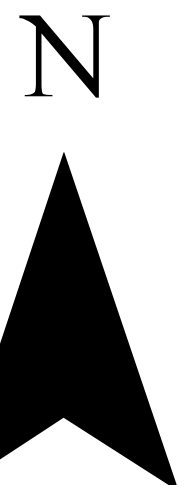


DRAFT
S19 Coniferous Spatial
Harvest Sequence
2010 - 2030

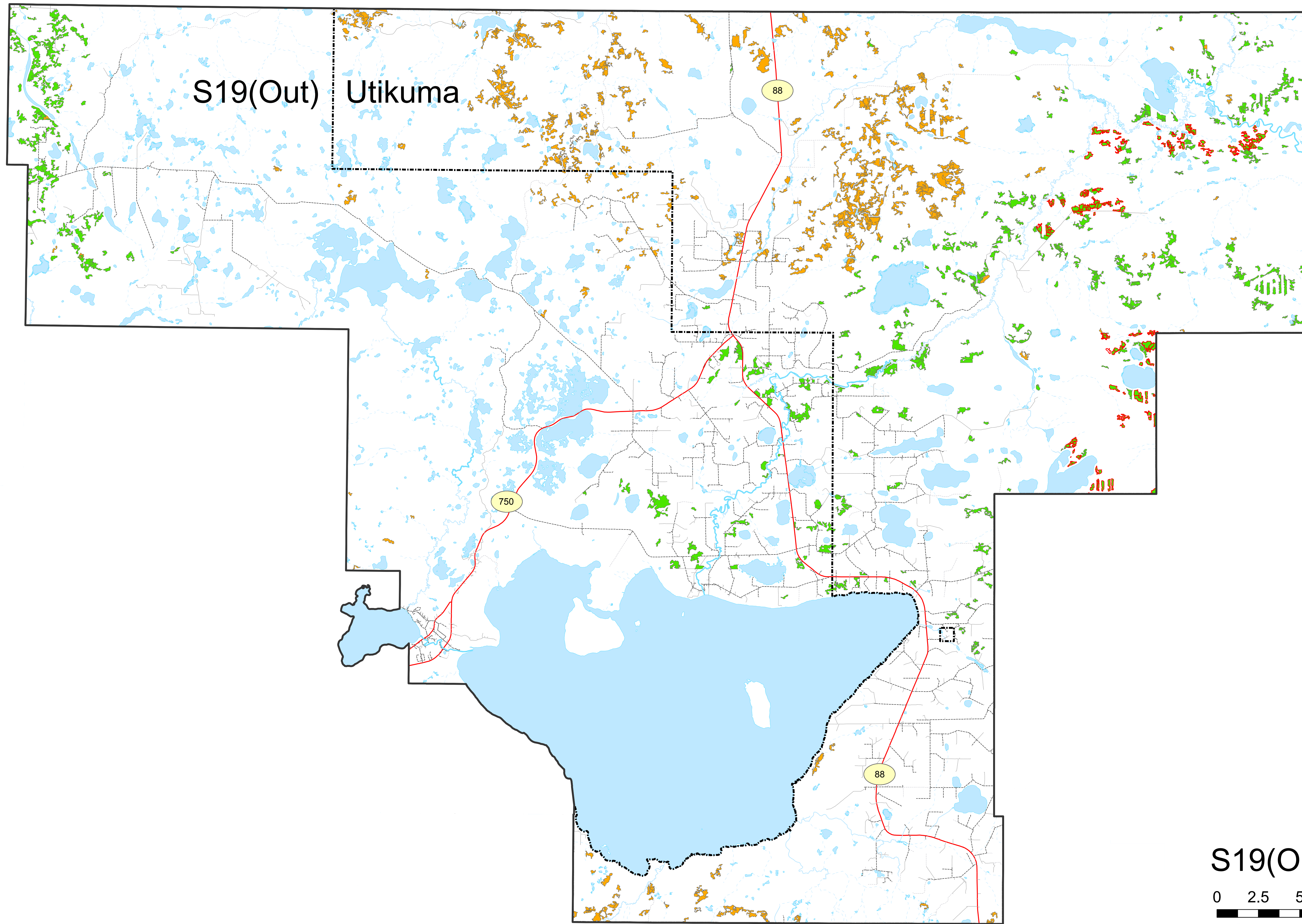
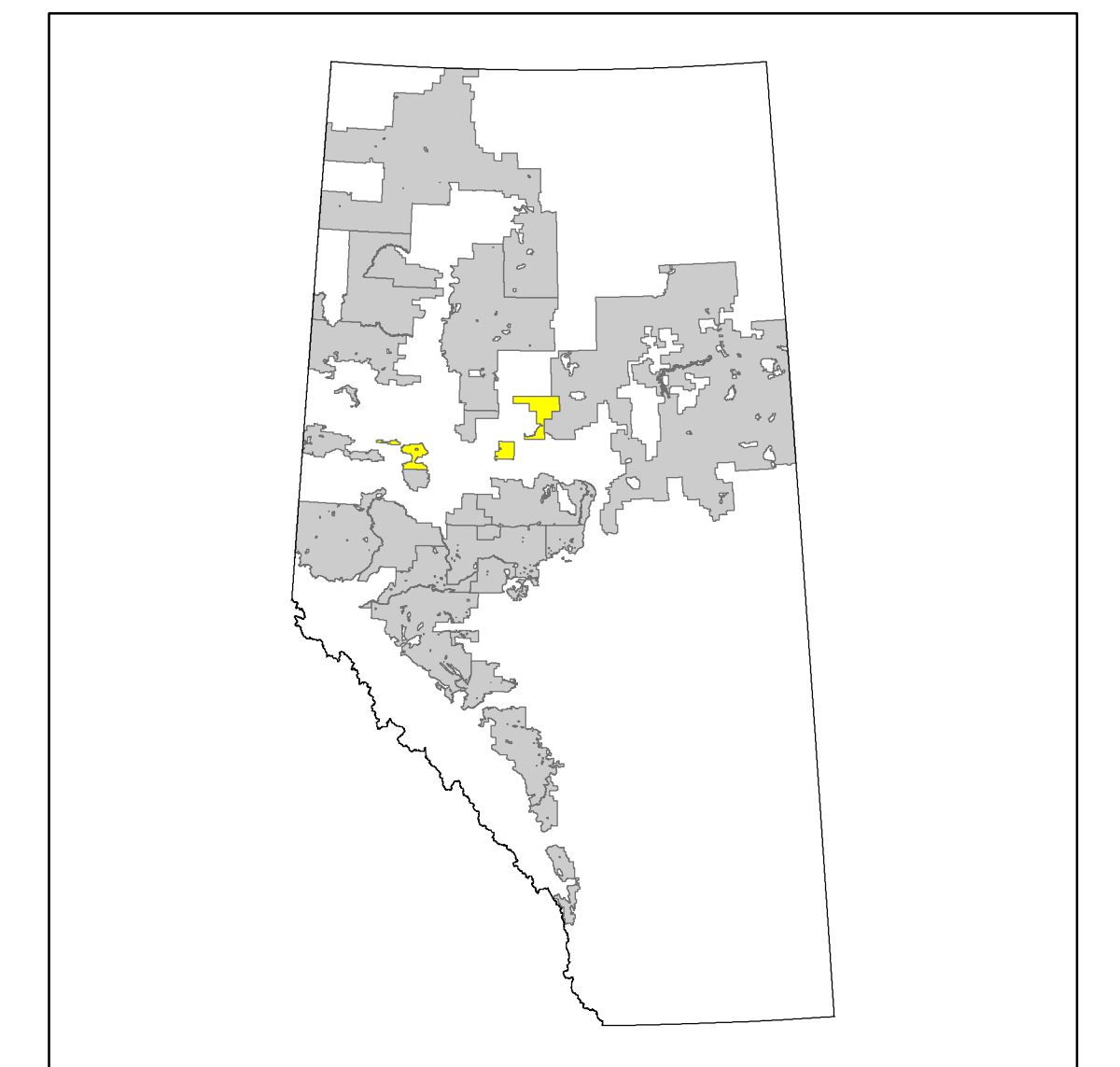
November 26, 2010

-  West Fraser (Slave Lake) Pre-blocks
-  Coniferous Blocks: Year 1-10
-  Coniferous Blocks: Year 11-20
-  FMA Boundary for Tolko Industries Ltd. (High Prairie)
-  2 Lane Undivided Road
-  2 Lane Gravel Road
-  1 Lane Gravel Road
-  Unimproved Road
-  Truck-Trail
-  Winter Road

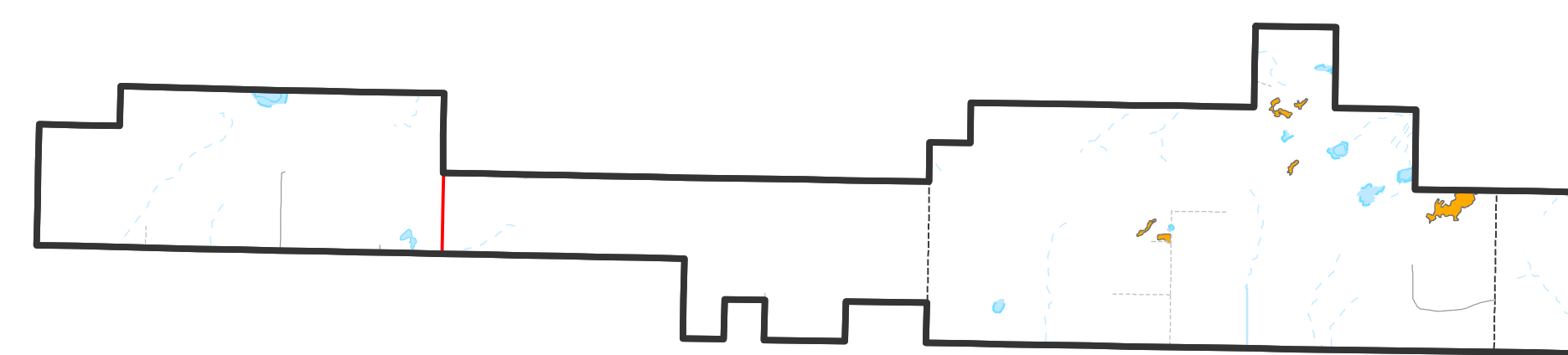
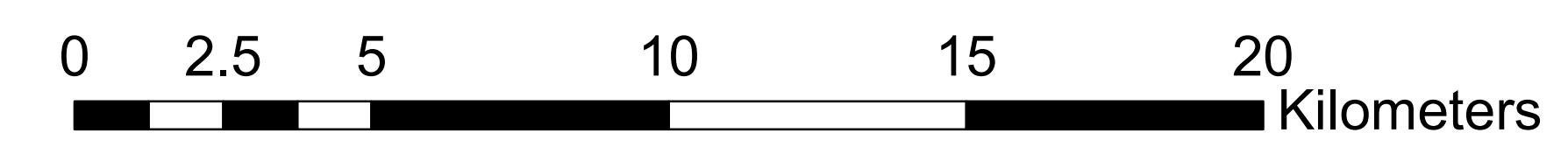


Government of Alberta
 Sustainable
 Resource
 Development

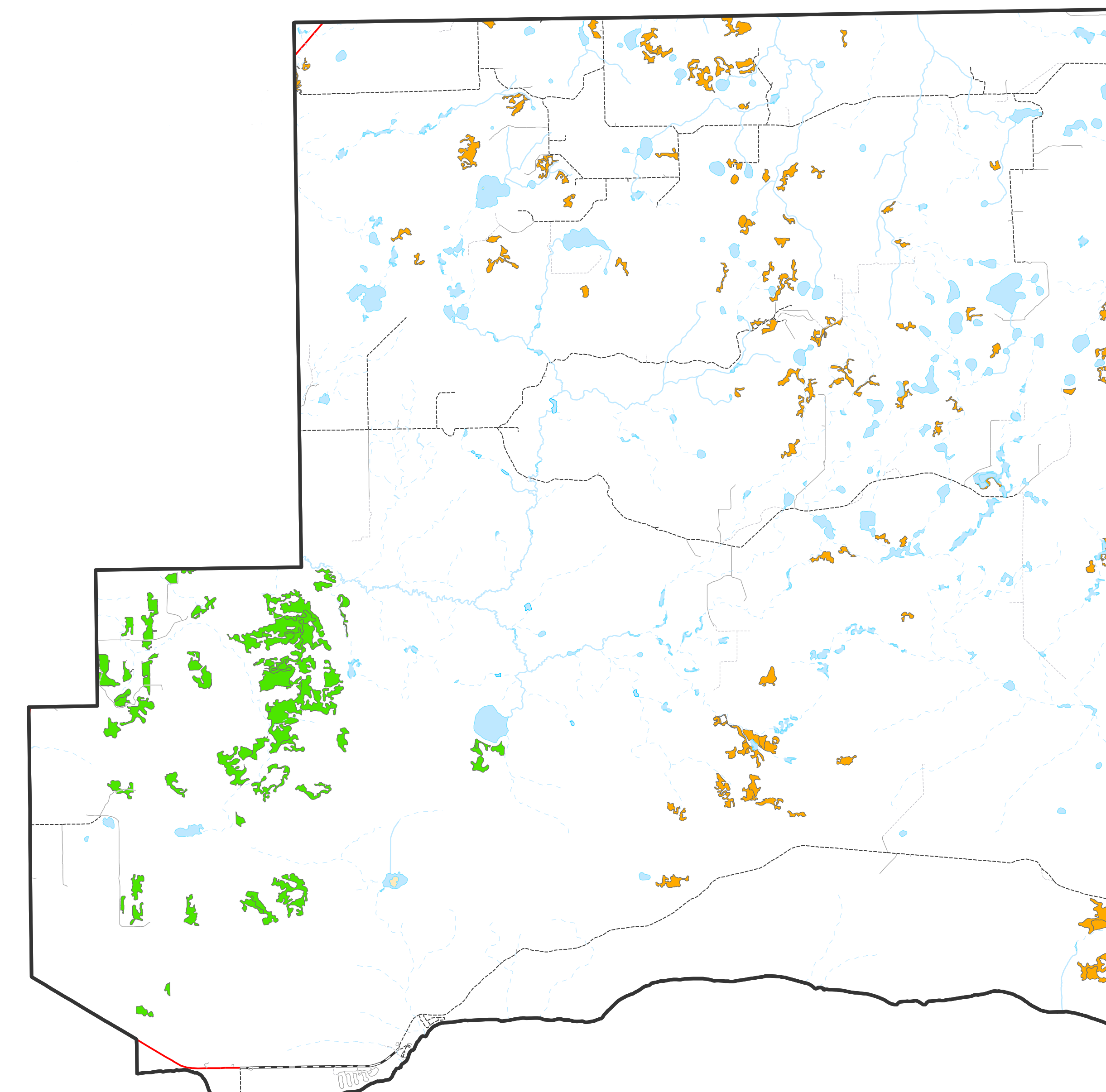
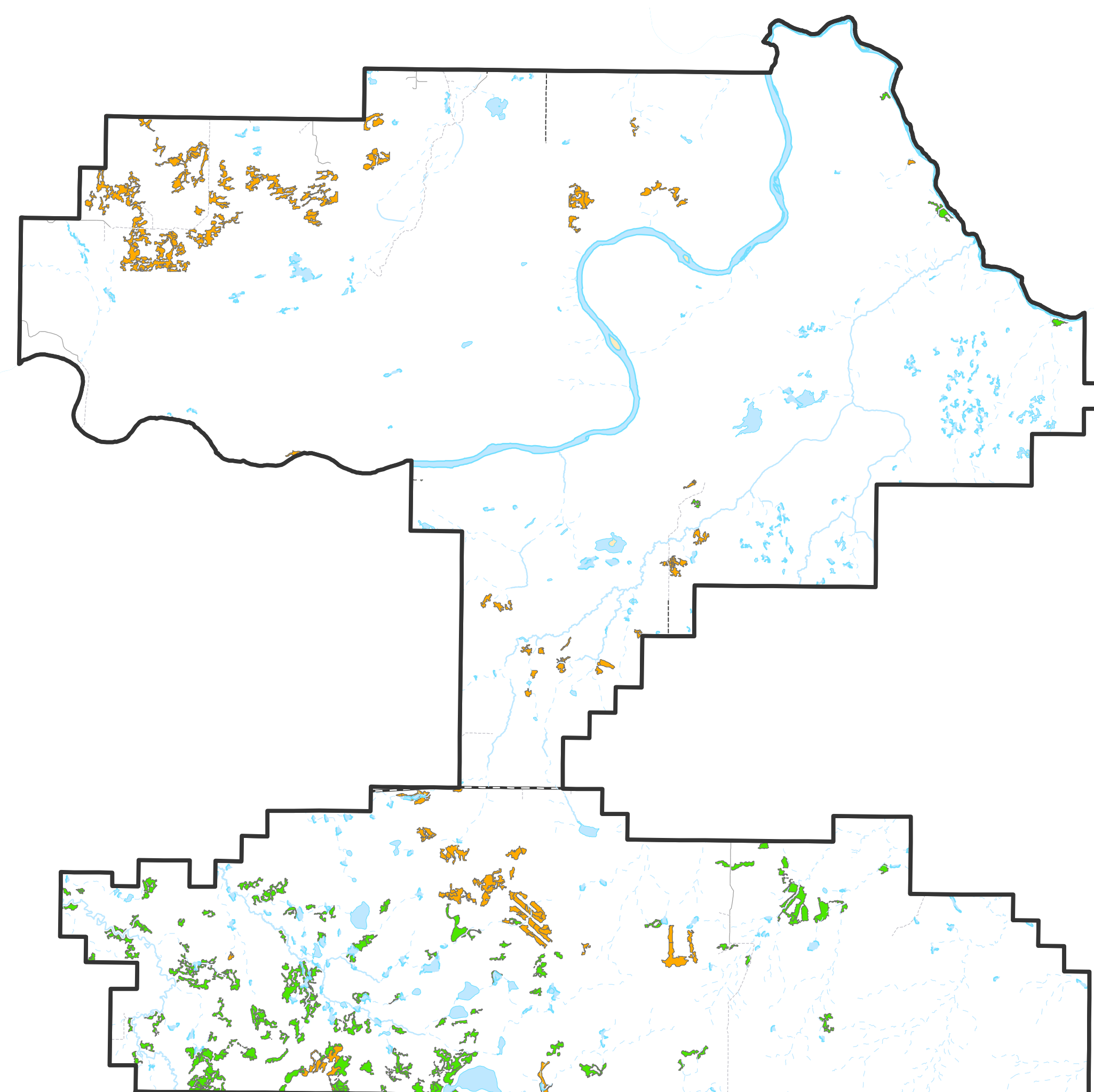
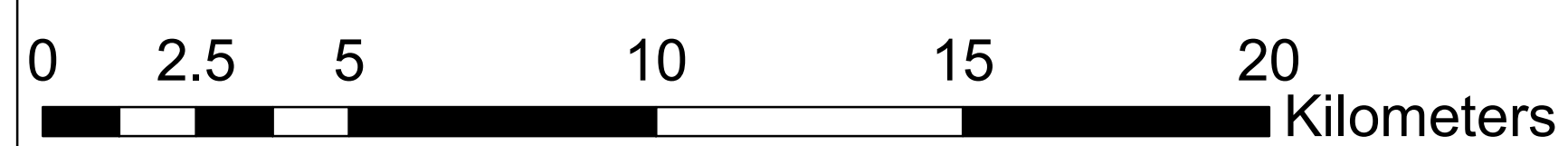
The Minister and the Crown provides this information without warranty or representation as to any matter including but not limited to whether the data / information is correct, accurate or free from error, defect, danger, or hazard and whether it is otherwise useful or suitable for any use the user may make of it.



S19(Out) / Utikuma



Birch / Whitemud



Salt

