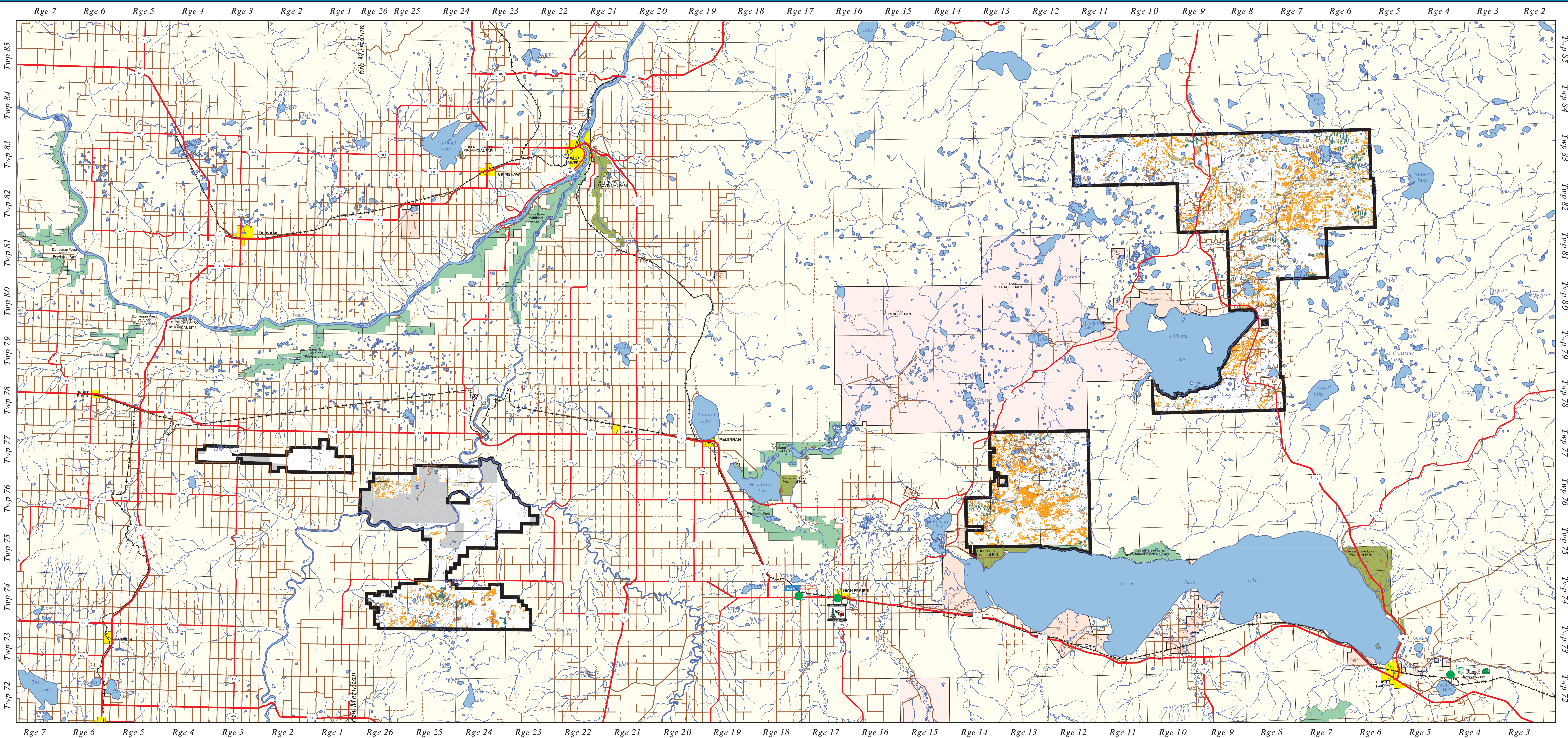
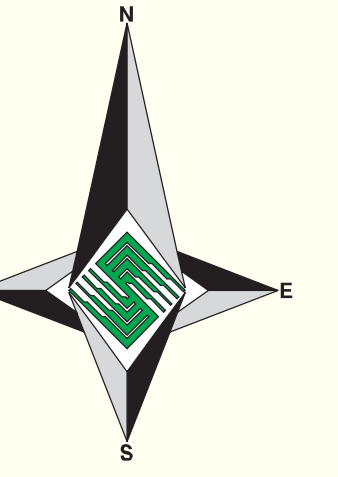


# WILDLIFE HABITAT DISTRIBUTION

Species: **MOOSE**  
Time Period: **40 YEAR PROJECTION**



### OPERATING AREA

**BIRCH** (Operating Area Name)  
**6** (Compartment Number)

**UTIKUMA**  
**SALT**  
**WHITEMUD**

### PROVINCIAL INDEX

### PLANIMETRIC LEGEND

	PRIMARY HIGHWAY		LAKE/RIVER
	DIVIDED PAVED GRAVEL		CITY/TOWN
	SECONDARY ROAD PAVED GRAVEL		PROVINCIAL PARK
	IMPROVED ROAD UNIMPROVED ROAD		WILDLAND PROVINCIAL PARK METIS SETTLEMENTS FIRST NATIONS RESERVES
	TRUCK TRAIL		GRAZING LEASE*
	RAILWAY		MILL SITE
	RUNWAY		
	TOWNSHIP LINE		
	FMA BOUNDARY		
	STREAM		

\* These areas were not selected in habitat analysis

### MOOSE

	SW Habitat		SB/P Habitat
	Mixedwood Habitat		Foraging

#### HABITAT CRITERIA

- Canopy closure B, C, or D density
- Sw, Sb, Pj, Pl Leading Species
- Height greater than 10m

OR

- Deciduous overstorey with an understorey meeting the same specifications as above

OR

- Mixedwood stand with a C or D density and a tree height greater than 10m

#### FORAGING CRITERIA

- Cutblocks less than 20 years

Data is our core business™

0 5 10 15 20 25  
KILOMETRES

Map Version 1.00  
Map Date: January 17, 2005  
Original Map Scale: 1:250000  
FMS File: moose\_habitat\_and\_forage\_40.dbf  
Map Production: Silvacom Ltd.  
Silvacom Reference: 1-001  
Map File: J:\010\maps\wildlife\_map.apl