

5.5 Caribou Range and Ungulate Winter range Assessment

5.5.1 Caribou range and Habitat

A caribou range encompasses 47,111 hectares, or 80% of the Vanderwell FMA. This is seen in Map 5-5-10. The FMA area has been classified into two habitat categories. These categories are identified as effective Caribou habitat and ineffective Caribou habitat. Effective habitat includes 4,372 ha and is defined as all forested stands with an age equal to or exceeding 50 years and not within 250m of and anthropogenic disturbance. Table 5.11 shows the breakdown of effective and not effective caribou habitat throughout the FMA. Map 5-11 displays these areas.

TABLE 5.11: CARIBOU HABITAT SUMMARY.

Landbase Status	Effective Caribou Habitat TWP 70 and North (hectares)	Effective Caribou Habitat South of TWP 70	Total Effective Caribou Habitat	Not Effective Caribou Habitat TWP 70 and North (hectares)	Not Effective Caribou Habitat South of TWP 70	Total Not Effective Caribou Habitat	Grand Total (hectares)
Net Landbase	1344	135	1479	2797	823	3620	5099
Landbase Deletion	2044	849	2893	23217	27326	50543	53436
Total	3388	984	4373	26015	28149	54163	58535

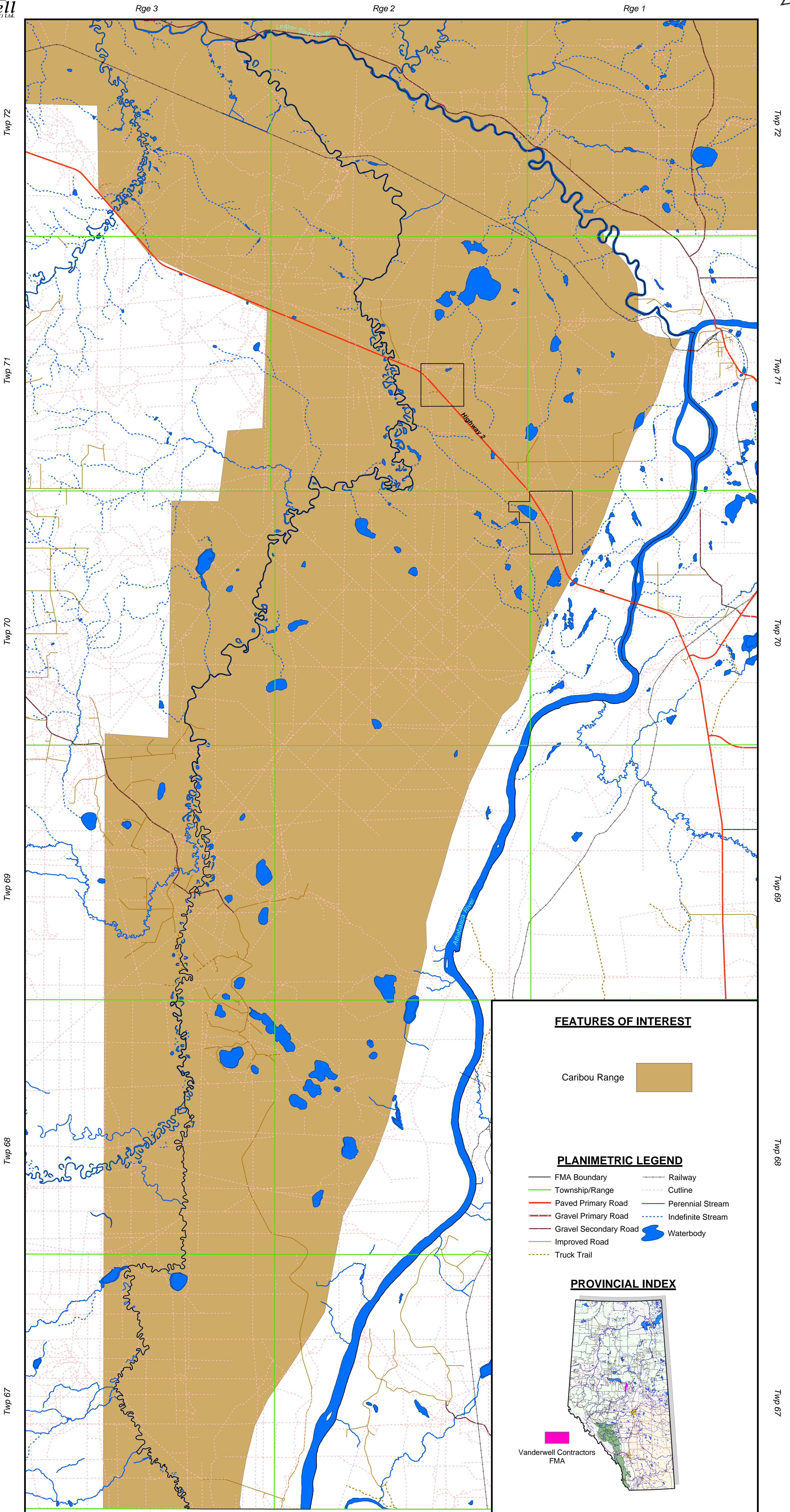
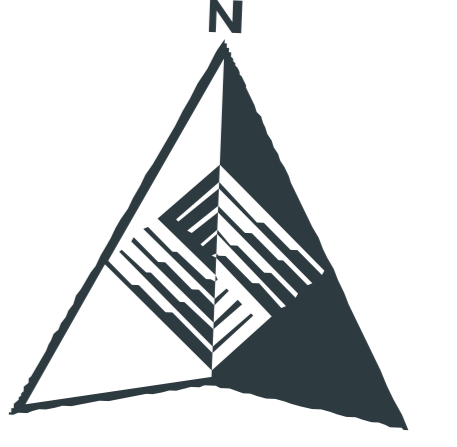
5.5.2 Ungulate Winter Range

The ungulate winter range within the Vanderwell FMA follows the eastern edge of the FMA along the Athabasca River and includes 10,164 hectares, or 17% of the FMA. This ungulate winter range is demonstrated in Map 5-12.



CARIBOU RANGE

Within the Vanderwell FMA



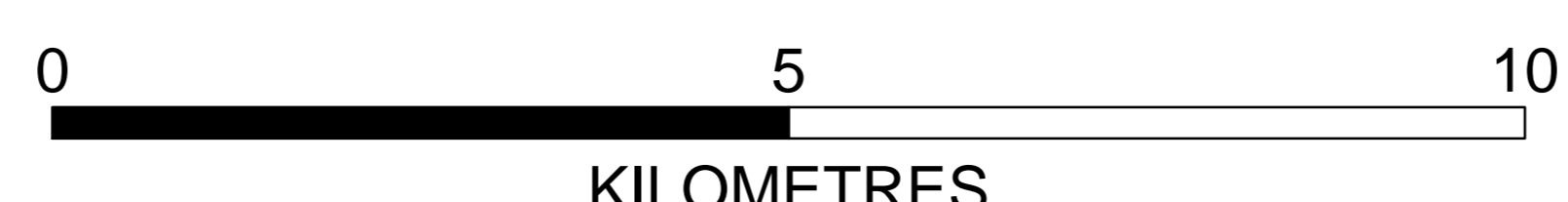
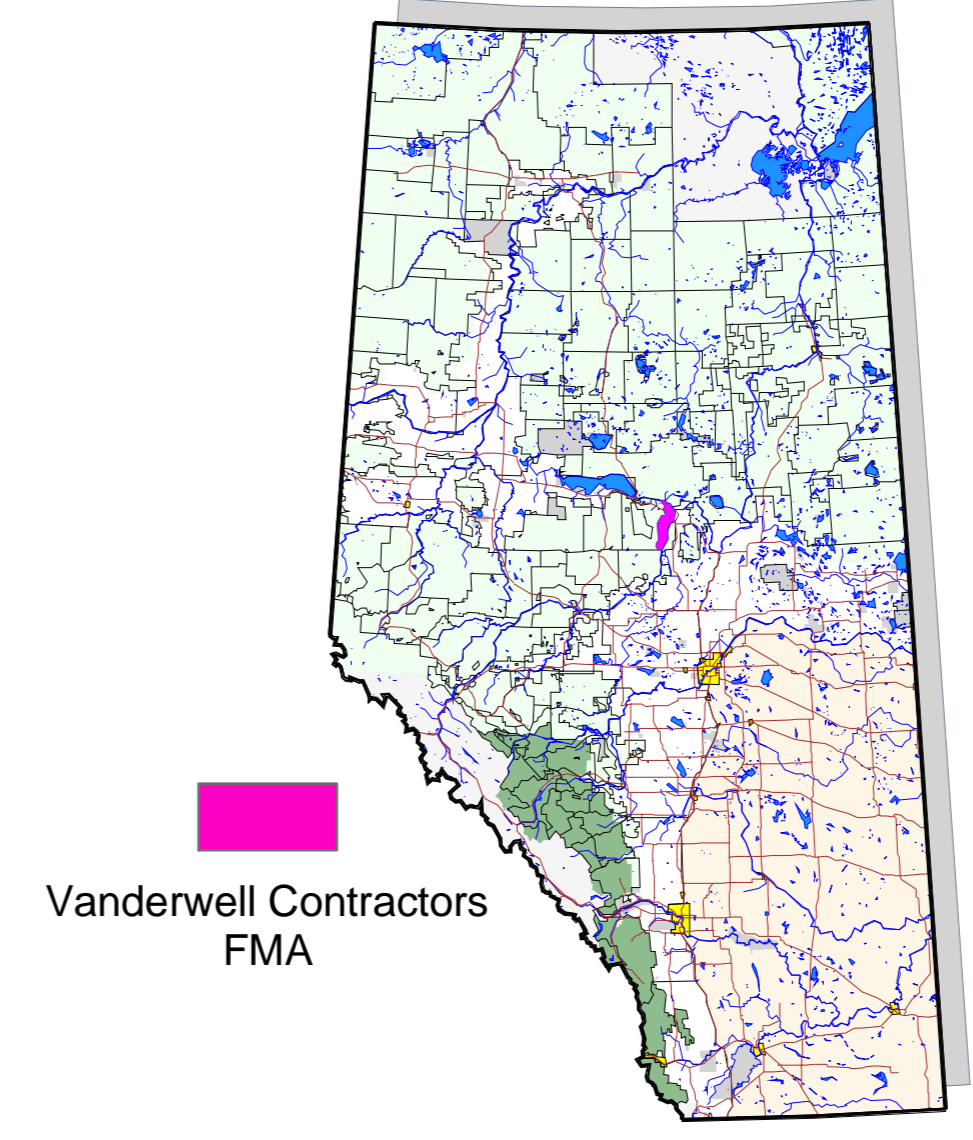
FEATURES OF INTEREST

Caribou Range

PLANIMETRIC LEGEND

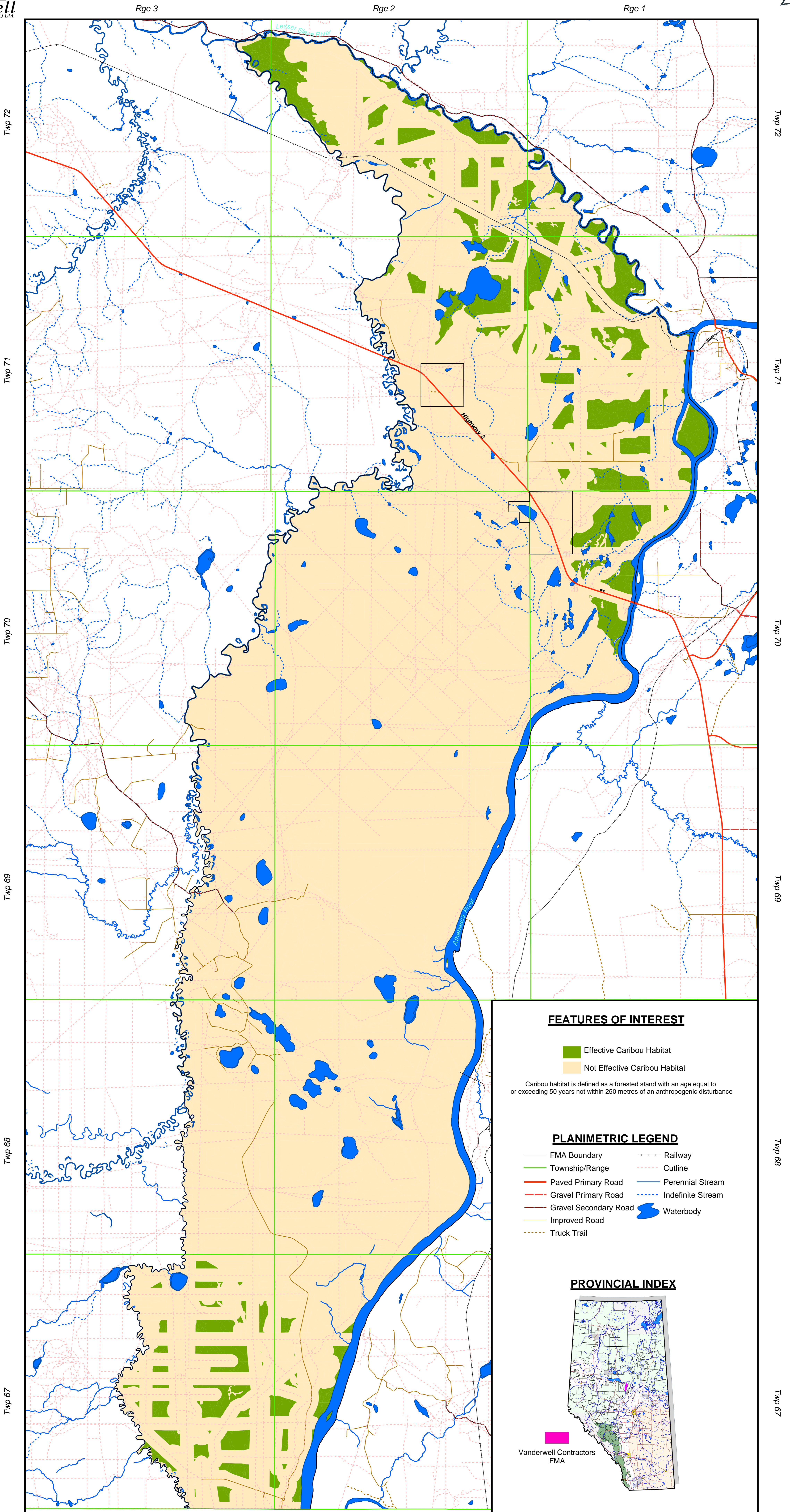
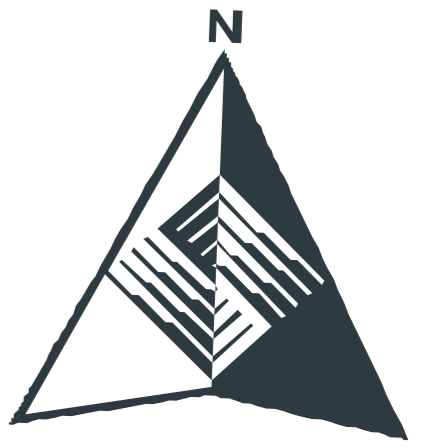
- FMA Boundary
- Township/Range
- Paved Primary Road
- Gravel Primary Road
- Gravel Secondary Road
- Improved Road
- Truck Trail
- Railway
- Cutline
- Perennial Stream
- Indefinite Stream
- Waterbody

PROVINCIAL INDEX



CURRENT CARIBOU HABITAT AREAS

Within the Vanderwell FMA



FEATURES OF INTEREST

- Effective Caribou Habitat
- Not Effective Caribou Habitat

Caribou habitat is defined as a forested stand with an age equal to or exceeding 50 years not within 250 metres of an anthropogenic disturbance

PLANIMETRIC LEGEND

- | | |
|-------------------------|---------------------|
| — FMA Boundary | — Railway |
| — Township/Range | — Cutline |
| — Paved Primary Road | — Perennial Stream |
| — Gravel Primary Road | — Indefinite Stream |
| — Gravel Secondary Road | — Waterbody |
| — Improved Road | |
| — Truck Trail | |

PROVINCIAL INDEX

