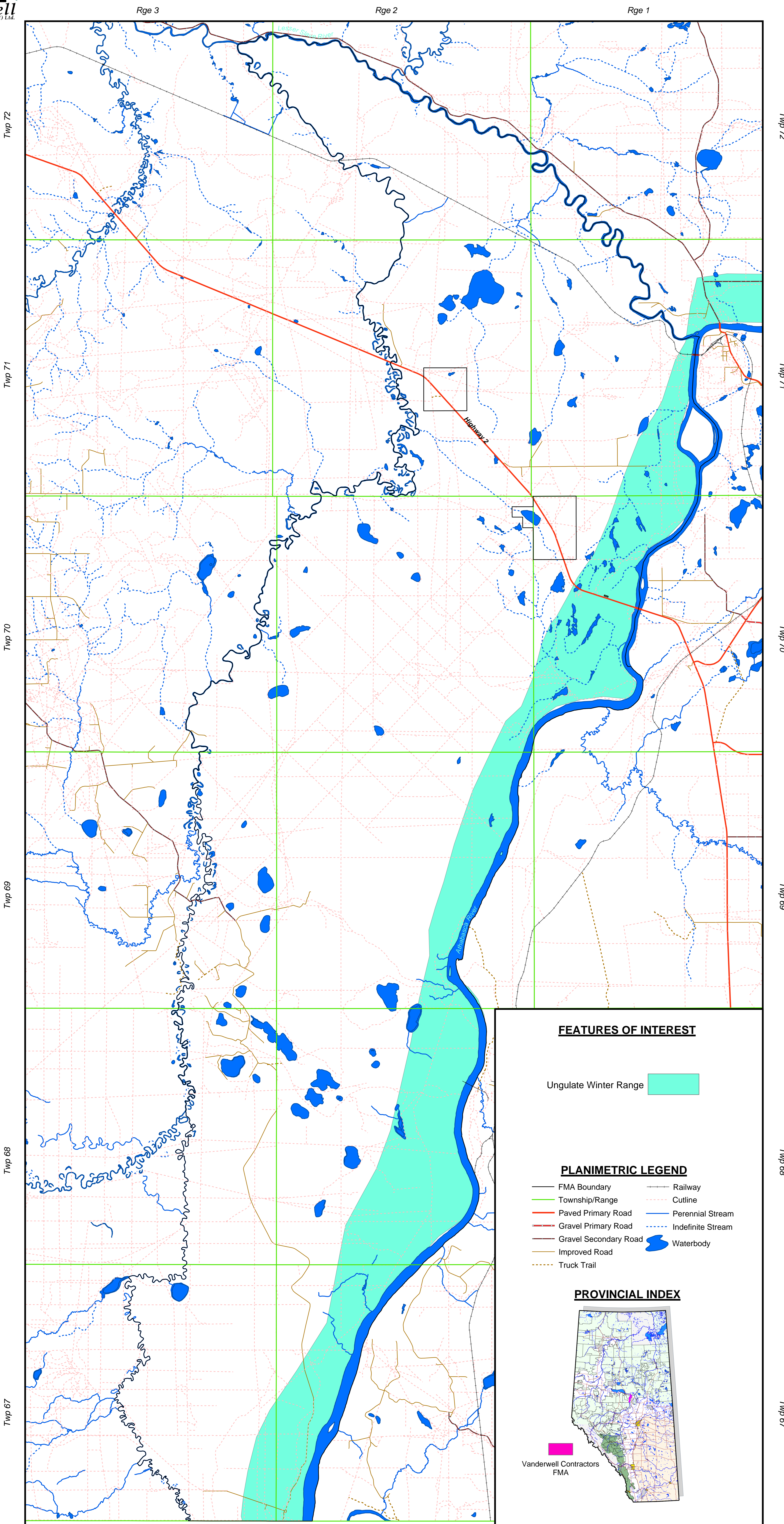
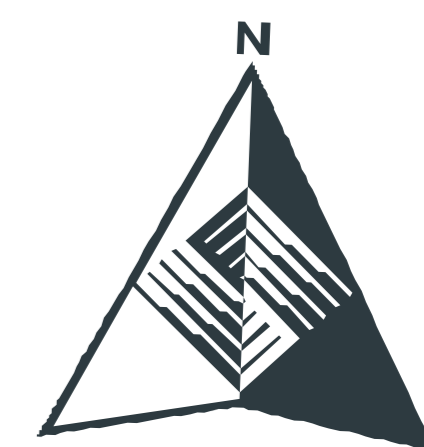




UNGULATE WINTER RANGE

Within the Vanderwell FMA



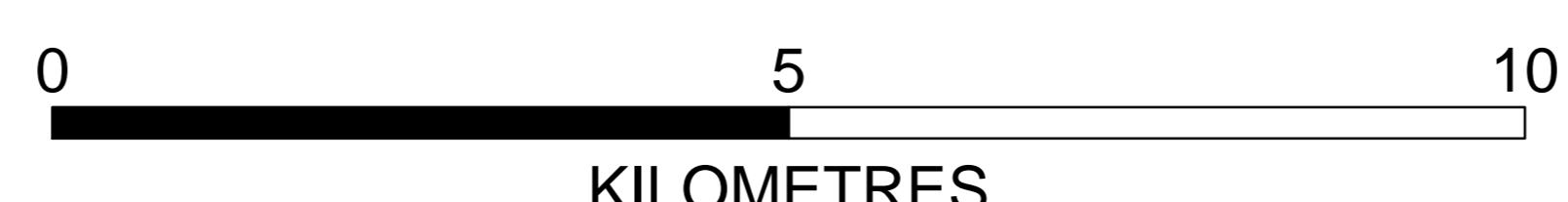
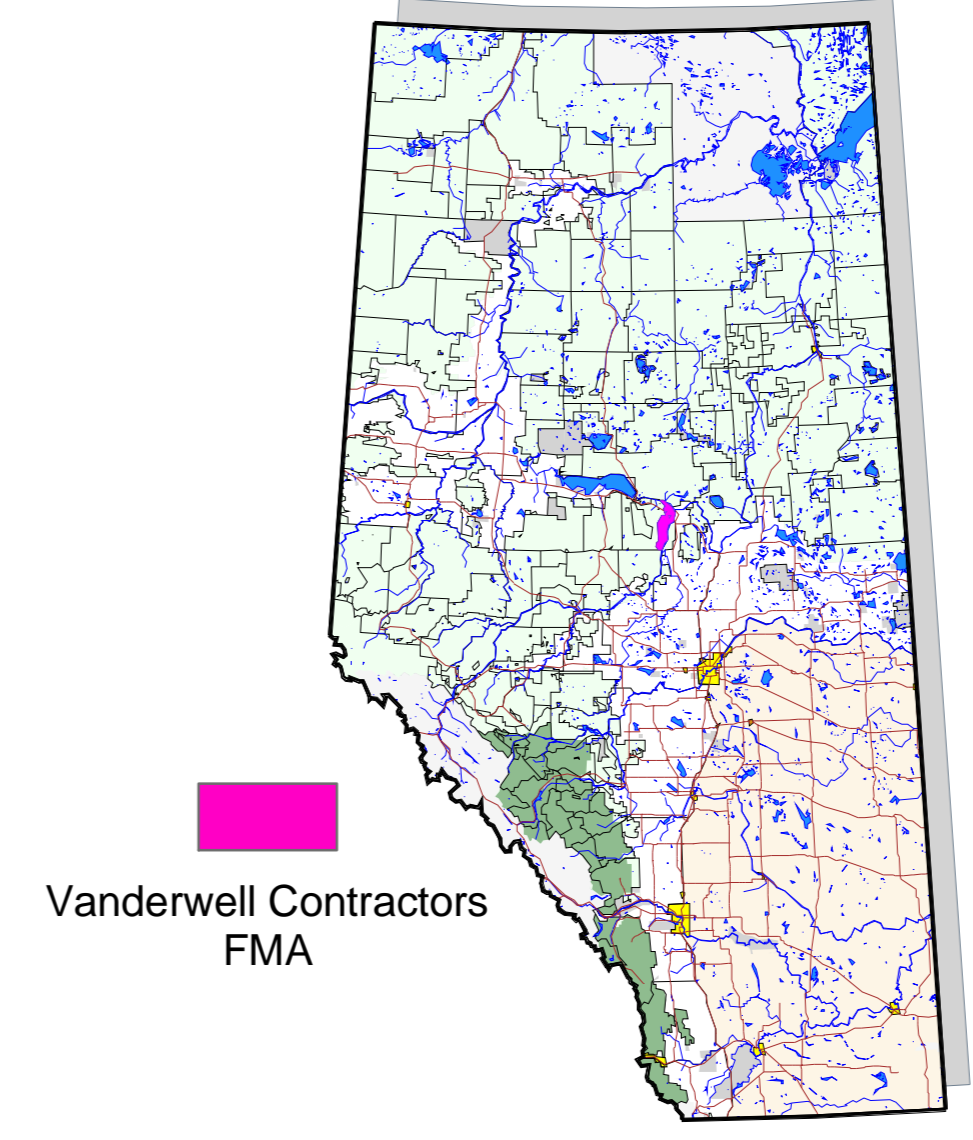
FEATURES OF INTEREST

Ungulate Winter Range 

PLANIMETRIC LEGEND

- FMA Boundary
- Township/Range
- Paved Primary Road
- Gravel Primary Road
- Gravel Secondary Road
- Improved Road
- Truck Trail
- Railway
- Cutline
- Perennial Stream
- Indefinite Stream
- Waterbody

PROVINCIAL INDEX



5.6 Forest Health

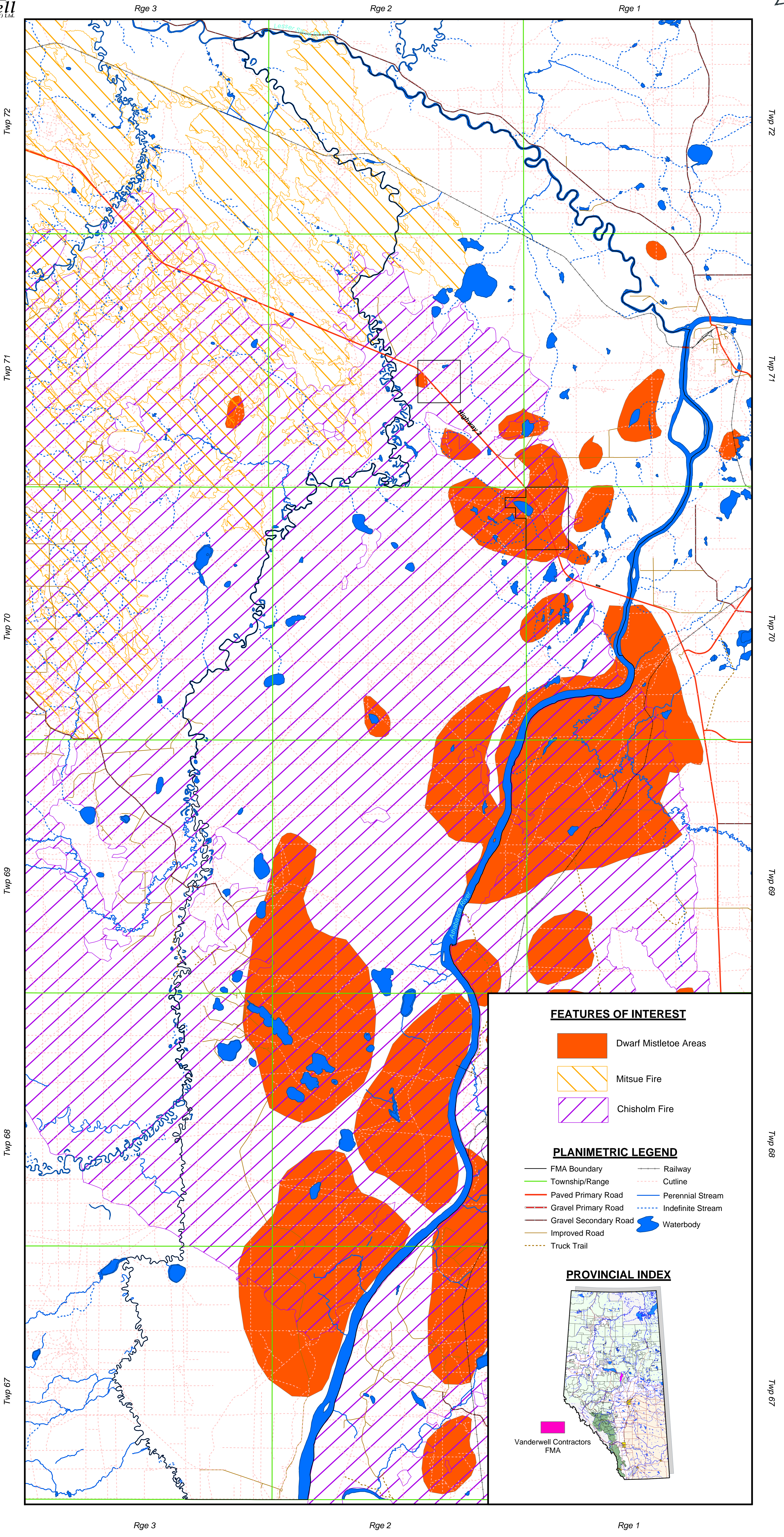
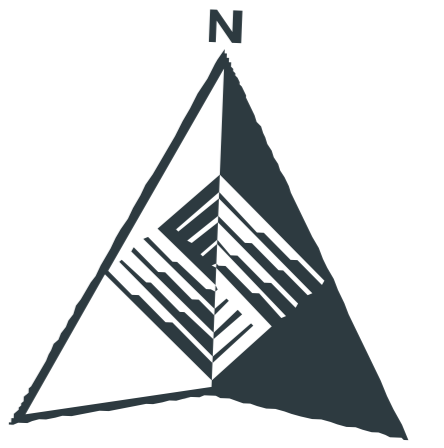
5.6.1 Dwarf Mistletoe

Portions of pine areas in the Vanderwell FMA have been identified as having the parasitic plant dwarf mistletoe (*Arceuthobium americanum*) present. Map 5-13 shows these areas. Many of the infected stands have since burned in the Chisholm fire.



DWARF MISTLETOE AREAS

Within the Vanderwell FMA



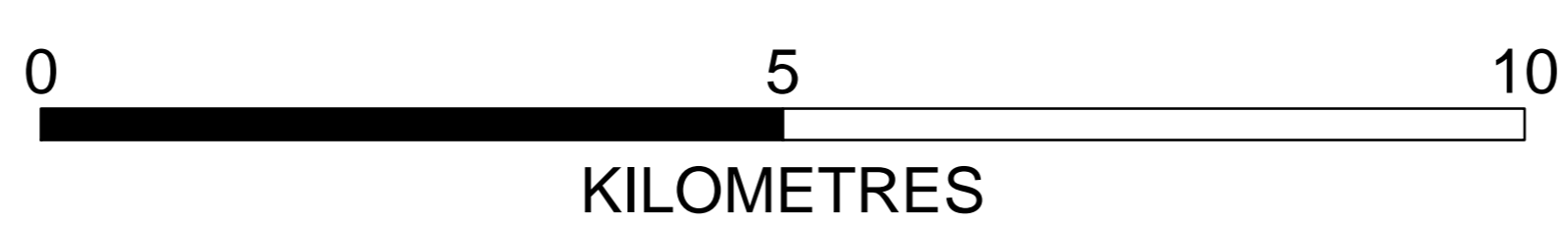
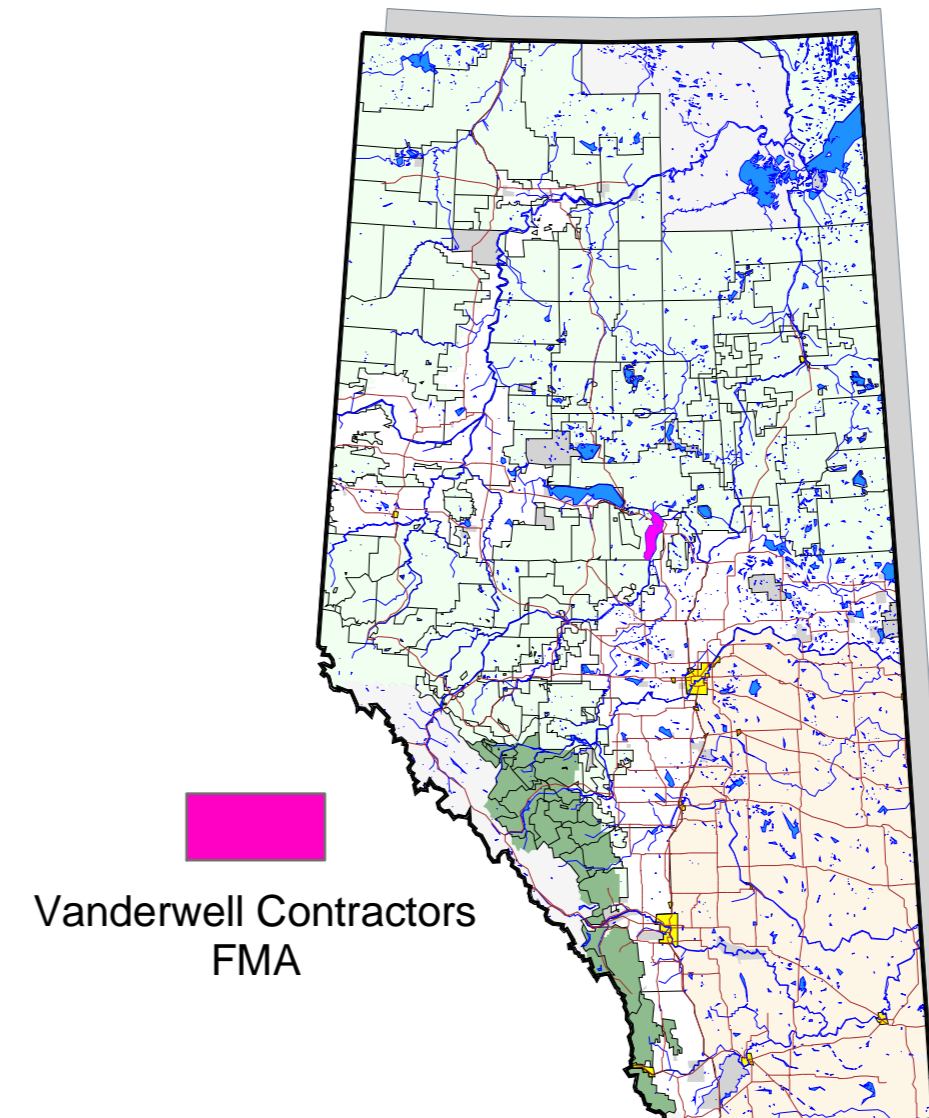
FEATURES OF INTEREST

- Dwarf Mistletoe Areas
- Mitsue Fire
- Chisholm Fire

PLANIMETRIC LEGEND

- FMA Boundary
- Township/Range
- Paved Primary Road
- Gravel Primary Road
- Gravel Secondary Road
- Improved Road
- Truck Trail
- Railway
- Cutline
- Perennial Stream
- Indefinite Stream
- Waterbody

PROVINCIAL INDEX



5.7 Forest Protection

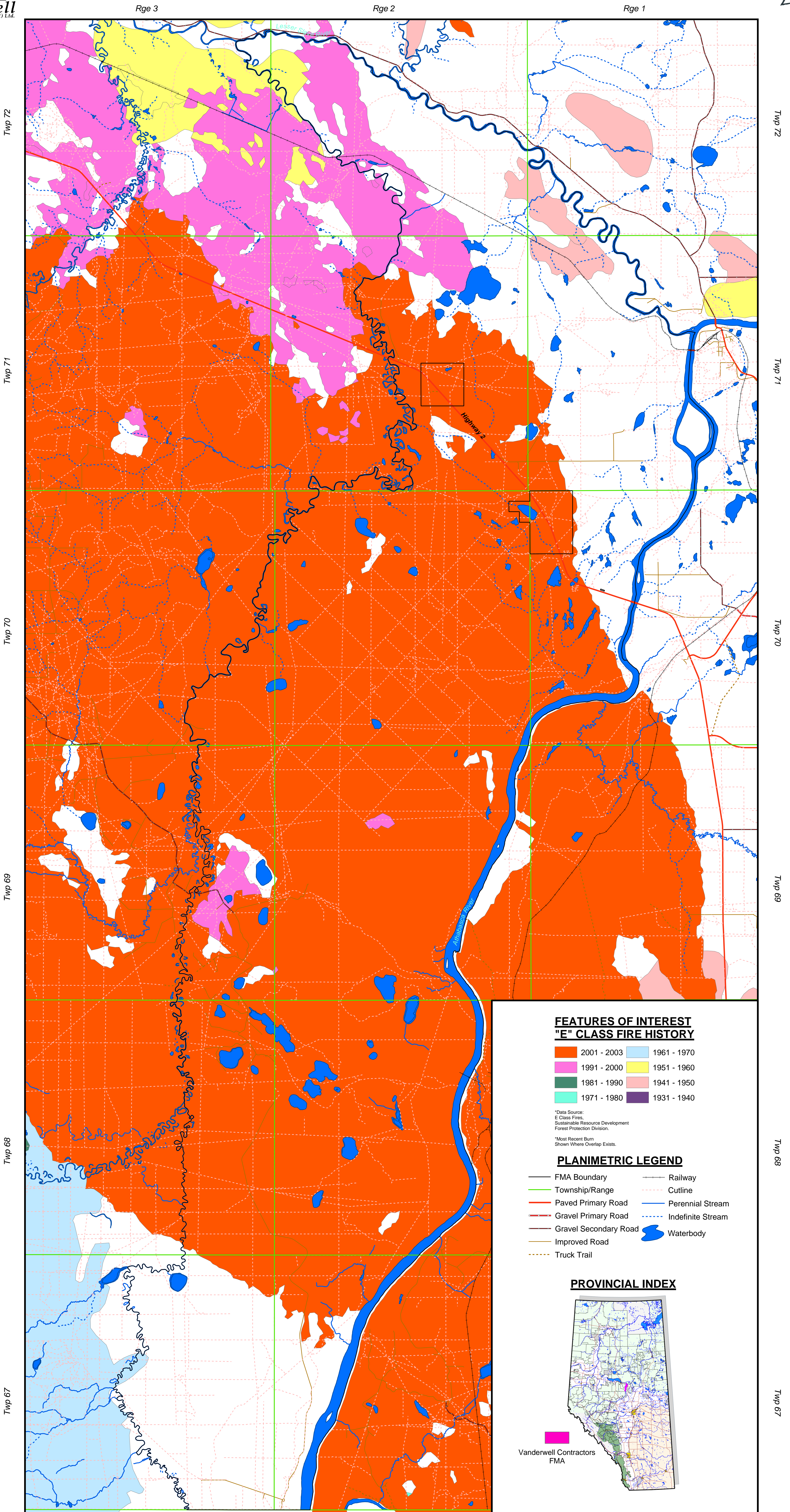
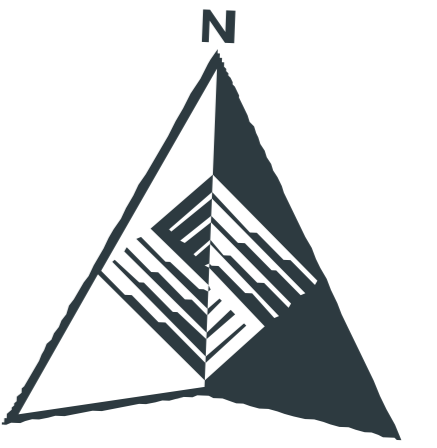
5.7.1 Fire History

The consequences of fire have dramatically affected the Vanderwell FMA area. As a result of the Mitsue and Chisholm fires in 1998 and the Chisholm fire in 2001, most of the FMA has been burned in the last five years. The FMA area has also been impacted by fires that predate the Mitsue and Chisholm burns. Map 5-14 shows the “E” class fires that have occurred in the FMA and surrounding area between 1931 and 2003. Fires greater than 200 hectares in size are classified as “E” class fires.



"E" CLASS FIRE HISTORY BY DECADE

Within the Vanderwell FMA



FEATURES OF INTEREST "E" CLASS FIRE HISTORY

2001 - 2003	1961 - 1970
1991 - 2000	1951 - 1960
1981 - 1990	1941 - 1950
1971 - 1980	1931 - 1940

*Data Source:
E Class Fires,
Sustainable Resource Development
Forest Protection Division.

*Most Recent Burn
Shown Where Overlap Exists.

PLANIMETRIC LEGEND

— FMA Boundary	— Railway
— Township/Range	— Cutline
— Paved Primary Road	— Perennial Stream
— Gravel Primary Road	— Indefinite Stream
— Gravel Secondary Road	— Waterbody
— Improved Road	
— Truck Trail	

PROVINCIAL INDEX



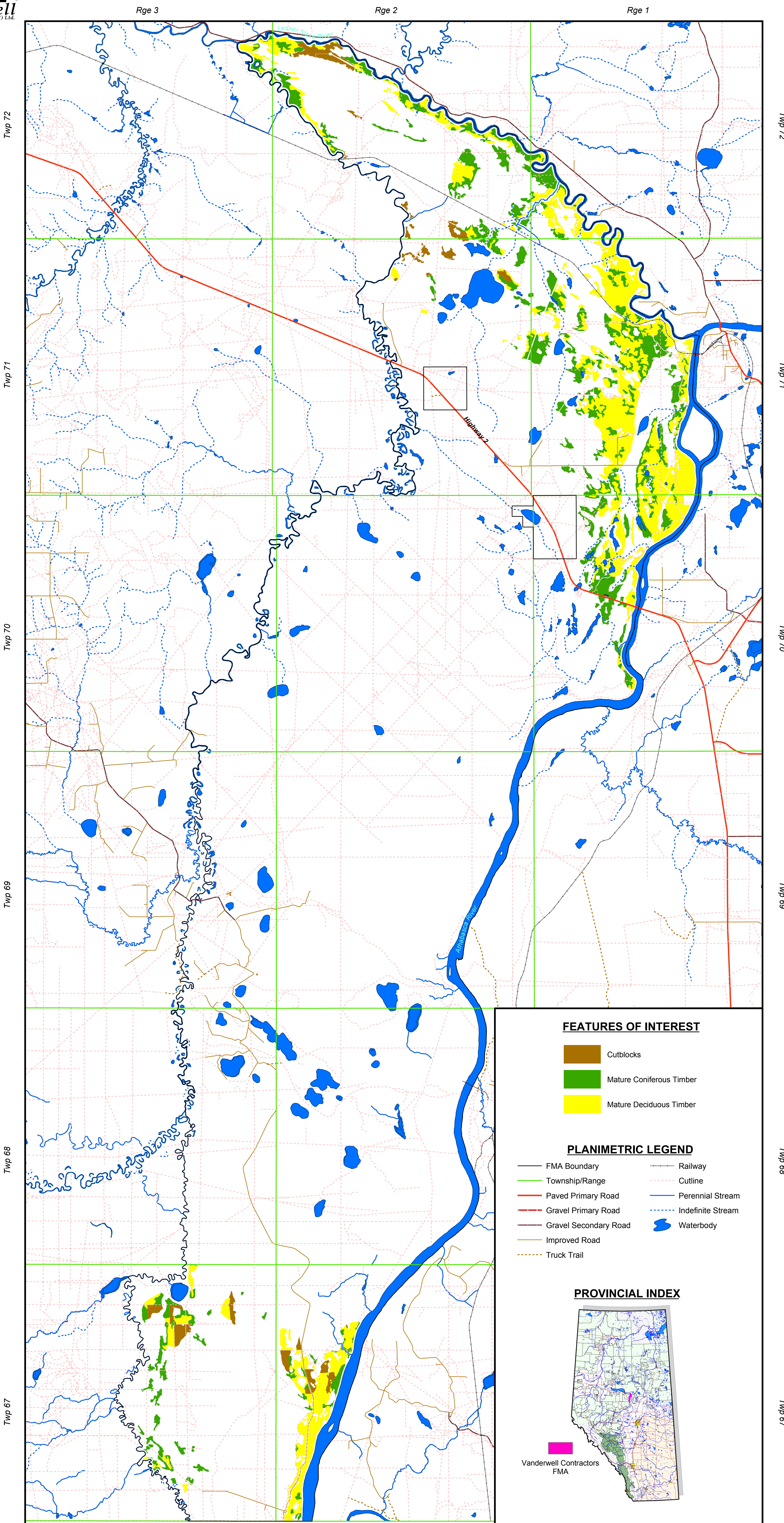
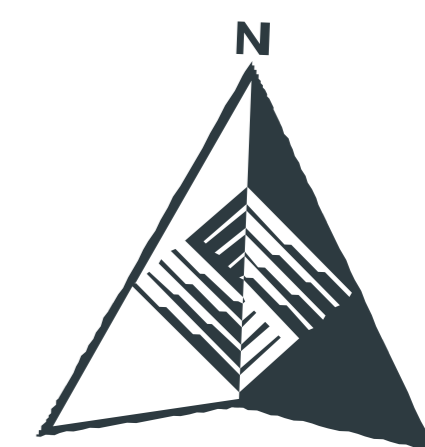
Vanderwell Contractors
FMA

5.7.2 Values at Risk

As a result of the recent Chisholm and Mitsue fires, 69% of the FMA gross area has been burned. Many of the potential values at risk were lost in these fires. Of the remaining unburned areas, values at risk include mature timber and cutblocks. Map 5-15 displays these areas.



VALUES AT RISK Within the Vanderwell FMA



FEATURES OF INTEREST

- Cutblocks
- Mature Coniferous Timber
- Mature Deciduous Timber

PLANIMETRIC LEGEND

- FMA Boundary
- Township/Range
- Paved Primary Road
- Gravel Primary Road
- Gravel Secondary Road
- Improved Road
- Truck Trail
- Railway
- Cutline
- Perennial Stream
- Indefinite Stream
- Waterbody

PROVINCIAL INDEX

