

TABLE 9.14: OVER MATURE PATCH SIZE DISTRIBUTION.

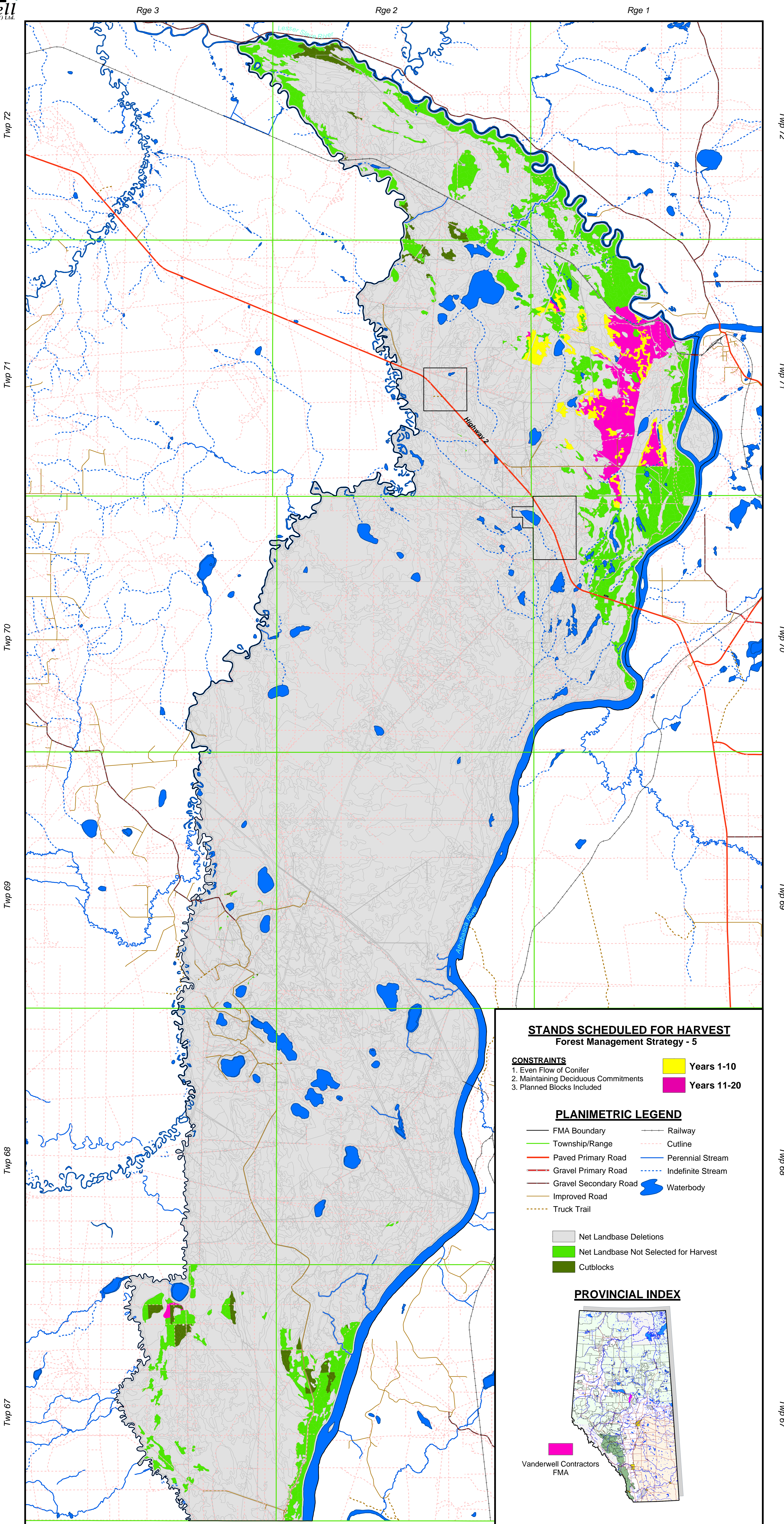
Patch Size	Current					20 Years				
	Max. (ha)	Mean (ha)	Min (ha)	Count	Sum (ha)	Max. (ha)	Mean (ha)	Min (ha)	Count	Sum (ha)
0-25	22	3	0	187	590	24	3	0	250	763
25.1-50	50	35	26	13	455	48	34	26	17	581
50.1-100	97	70	50	7	492	93	70	50	15	1044
100.1-200	172	165	158	2	329	177	132	108	5	662
200.1-400	223	223	223	1	223	231	229	227	2	458
400 +	0	0	0	0	0	740	740	740	1	740

As shown, the number of patches in each size category is increasing in the next 20 years, as is the total number of hectares in each patch size category.



20 YEAR HARVEST SEQUENCE

Within the Vanderwell FMA



STANDS SCHEDULED FOR HARVEST

Forest Management Strategy - 5

CONSTRAINTS

- 1. Even Flow of Conifer
- 2. Maintaining Deciduous Commitments
- 3. Planned Blocks Included

- Years 1-10
- Years 11-20

PLANIMETRIC LEGEND

- FMA Boundary
- Township/Range
- Paved Primary Road
- Gravel Primary Road
- Gravel Secondary Road
- Improved Road
- Truck Trail
- Railway
- Cutline
- Perennial Stream
- Indefinite Stream
- Waterbody

- Net Landbase Deletions
- Net Landbase Not Selected for Harvest
- Cutblocks

PROVINCIAL INDEX

