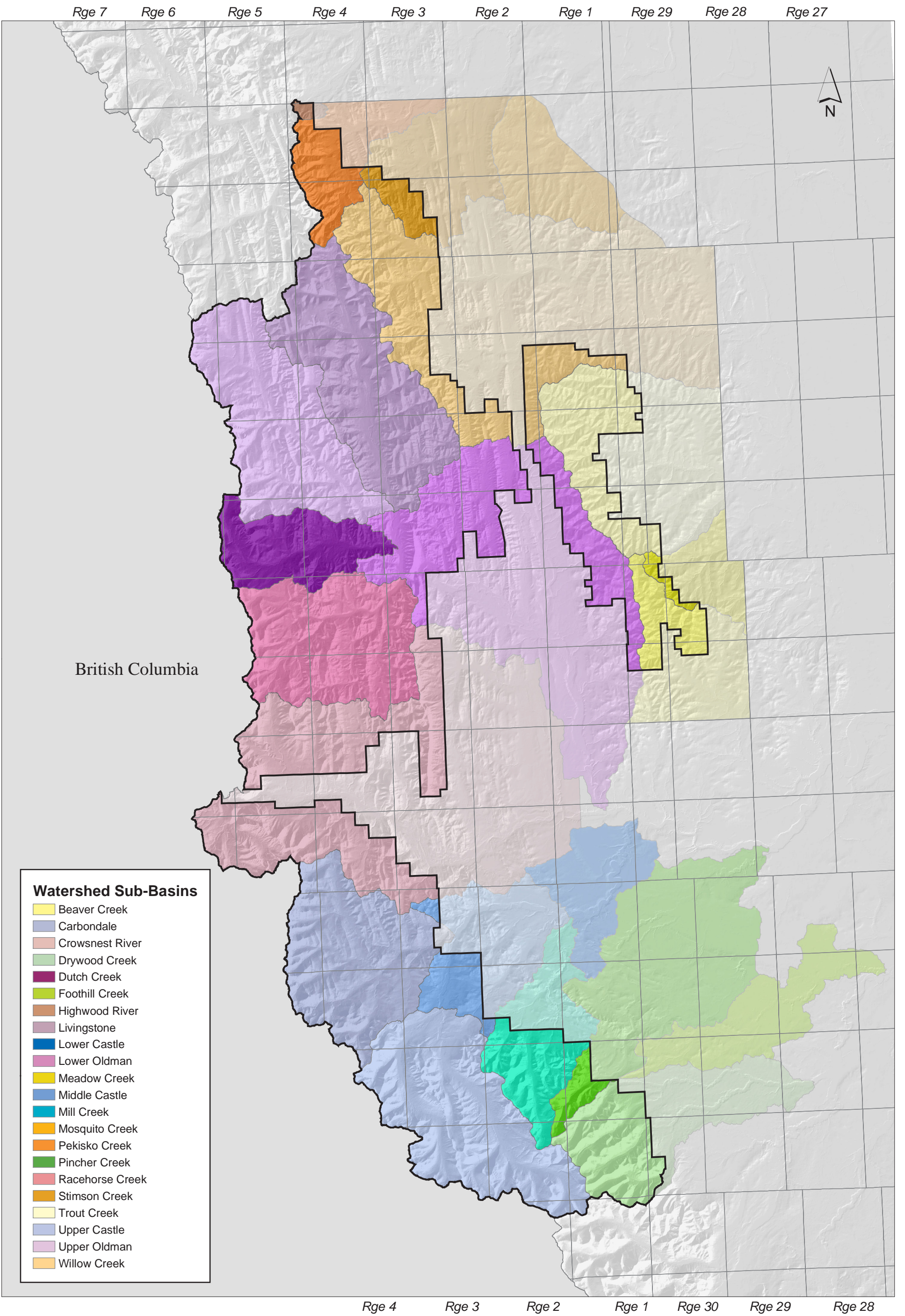


# Watershed Sub-Basins



British Columbia

## Watershed Sub-Basins

- Beaver Creek
- Carbondale
- Crowsnest River
- Drywood Creek
- Dutch Creek
- Foothill Creek
- Highwood River
- Livingstone
- Lower Castle
- Lower Oldman
- Meadow Creek
- Middle Castle
- Mill Creek
- Mosquito Creek
- Pekisko Creek
- Pincher Creek
- Racehorse Creek
- Stimson Creek
- Trout Creek
- Upper Castle
- Upper Oldman
- Willow Creek

## Watershed Sub-Basins for the Greater C5 Area

5 2.5 0 5 10 15 Kilometers

Map by: Resource Analysis Section, FMB  
 Date: September 26, 2002  
 Project: (f) ../c5\_83/arcview\_projects/assessment\_wshed.mxd  
 Projection: UTM11, NAD83