



1. Introduction

This document provides the reporting requirements as defined within the Planning Standard. The one exception to this is **VOIT 15 – Area of suitable habitat within each FMU for each biodiversity assessment species (1.2.1.1)**, which contains a significant amount of information contained within tables and maps to warrant a separate document (*Appendix XXV – BAP VOIT Reporting*).

The reporting elements within this document are based on the inputs and outputs contained within the 2007 DFMP Preferred Forest Management Scenario, including the Spatial Harvest Sequence and the associated assumptions.



2. VOIT Reporting Elements



VOIT 1 – Area of opening, mature + old, old and oldgrowthness forest by species strata for the forested and managed landbase for each FMU (1.1.1.1).

Information on seral stages and oldgrowthness is contained within the Supplemental Information section of *Appendix XXIII - Commitments*.

Forested Landbase

Table 1, Table 2, Table 3, Table 4 and Table 5 summarize the opening, mature + old and old seral stage, as well as the oldgrowthness area for the W11 forested landbase at years 0, 10, 50, 100 and 200 of the 200-year planning horizon, respectively.

Table 1. W11 forested landbase seral stage and oldgrowthness area summary by broad cover group and species strata at year 0.

Year	BCG	Species Strata	Opening		Mature + Old		Old		Oldgrowthness		Total	
			Ha	%	Ha	%	Ha	%	Ha	%	Ha	%
2007	D	AW	3,223	2%	29,009	20%	523	0%	11,722	8%	56,566	38%
2007	D	BW	9	0%	20	0%	4	0%	14	0%	142	0%
2007	DC	AP	250	0%	1,234	1%	14	0%	380	0%	1,927	1%
2007	DC	AS	732	0%	4,131	3%	-	0%	1,832	1%	5,639	4%
2007	CD	PA	362	0%	834	1%	-	0%	75	0%	2,234	2%
2007	CD	SA	1,675	1%	3,587	2%	12	0%	1,389	1%	5,554	4%
2007	C	LT	60	0%	7,223	5%	942	1%	2,625	2%	25,536	17%
2007	C	PL	1,178	1%	5,900	4%	57	0%	1,218	1%	13,351	9%
2007	C	SB	166	0%	4,466	3%	-	0%	1,321	1%	26,399	18%
2007	C	SW	2,046	1%	7,447	5%	-	0%	776	1%	10,419	7%
Total			9,699	7%	63,851	43%	1,552	1%	21,352	14%	147,765	100%

Table 2. W11 forested landbase seral stage and oldgrowthness area summary by broad cover group and species strata at year 10.

Year	BCG	Species Strata	Opening		Mature + Old		Old		Oldgrowthness		Total	
			Ha	%	Ha	%	Ha	%	Ha	%	Ha	%
2017	D	AW	7,640	5%	25,796	17%	1,373	1%	11,754	8%	56,566	38%
2017	D	BW	-	0%	100	0%	19	0%	32	0%	142	0%
2017	DC	AP	137	0%	1,129	1%	71	0%	378	0%	1,927	1%
2017	DC	AS	1,089	1%	3,690	2%	245	0%	1,785	1%	5,639	4%
2017	CD	PA	296	0%	1,368	1%	-	0%	127	0%	2,234	2%
2017	CD	SA	1,482	1%	2,867	2%	88	0%	1,455	1%	5,554	4%
2017	C	LT	60	0%	9,185	6%	1,910	1%	4,237	3%	25,536	17%
2017	C	PL	1,309	1%	5,074	3%	135	0%	2,293	2%	13,351	9%
2017	C	SB	107	0%	5,641	4%	396	0%	1,975	1%	26,399	18%
2017	C	SW	3,003	2%	6,175	4%	-	0%	1,338	1%	10,419	7%
Total			15,124	10%	61,025	41%	4,236	3%	25,374	17%	147,765	100%



Table 3. W11 forested landbase seral stage and oldgrowthness area summary by broad cover group and species strata at year 50.

Year	BCG	Species Strata	Opening		Mature + Old		Old		Oldgrowthness		Total	
			Ha	%	Ha	%	Ha	%	Ha	%	Ha	%
2057	D	AW	7,029	5%	19,265	13%	2,253	2%	4,070	3%	56,566	38%
2057	D	BW	4	0%	129	0%	128	0%	108	0%	142	0%
2057	DC	AP	167	0%	1,058	1%	216	0%	491	0%	1,873	1%
2057	DC	AS	693	0%	1,463	1%	777	1%	1,075	1%	5,416	4%
2057	CD	PA	88	0%	1,172	1%	1	0%	279	0%	2,288	2%
2057	CD	SA	947	1%	1,282	1%	882	1%	995	1%	5,777	4%
2057	C	LT	-	0%	23,862	16%	9,185	6%	16,878	11%	25,536	17%
2057	C	PL	723	0%	9,144	6%	3,220	2%	4,594	3%	13,351	9%
2057	C	SB	-	0%	20,417	14%	2,105	1%	7,807	5%	26,170	18%
2057	C	SW	1,315	1%	4,648	3%	1,335	1%	2,850	2%	10,648	7%
Total			10,967	7%	82,440	56%	20,101	14%	39,147	26%	147,765	100%

Table 4. W11 forested landbase seral stage and oldgrowthness area summary by broad cover group and species strata at year 100.

Year	BCG	Species Strata	Opening		Mature + Old		Old		Oldgrowthness		Total	
			Ha	%	Ha	%	Ha	%	Ha	%	Ha	%
2107	D	AW	8,430	6%	12,274	8%	777	1%	2,413	2%	56,566	38%
2107	D	BW	32	0%	9	0%	9	0%	14	0%	142	0%
2107	DC	AP	302	0%	322	0%	42	0%	53	0%	1,286	1%
2107	DC	AS	789	1%	2,026	1%	394	0%	461	0%	4,775	3%
2107	CD	PA	211	0%	1,671	1%	719	0%	811	1%	2,873	2%
2107	CD	SA	611	0%	3,558	2%	1,281	1%	1,765	1%	6,419	4%
2107	C	LT	-	0%	25,536	17%	25,476	17%	23,721	16%	25,536	17%
2107	C	PL	917	1%	8,042	5%	4,012	3%	5,263	4%	13,335	9%
2107	C	SB	-	0%	24,315	16%	10,569	7%	18,377	12%	24,436	17%
2107	C	SW	919	1%	8,360	6%	5,042	3%	4,709	3%	12,398	8%
Total			12,209	8%	86,114	58%	48,320	33%	57,585	39%	147,765	100%

Table 5. W11 forested landbase seral stage and oldgrowthness area summary by broad cover group and species strata at year 200.

Year	BCG	Species Strata	Opening		Mature + Old		Old		Oldgrowthness		Total	
			Ha	%	Ha	%	Ha	%	Ha	%	Ha	%
2207	D	AW	9,446	6%	9,946	7%	1,424	1%	2,838	2%	56,566	38%
2207	D	BW	-	0%	133	0%	132	0%	109	0%	142	0%
2207	DC	AP	245	0%	381	0%	19	0%	135	0%	1,242	1%
2207	DC	AS	526	0%	1,849	1%	22	0%	442	0%	4,225	3%
2207	CD	PA	215	0%	354	0%	23	0%	57	0%	1,820	1%
2207	CD	SA	1,072	1%	2,409	2%	1,613	1%	1,595	1%	8,067	5%
2207	C	LT	-	0%	25,536	17%	25,536	17%	25,536	17%	25,536	17%
2207	C	PL	1,265	1%	5,013	3%	2,364	2%	3,591	2%	10,240	7%
2207	C	SB	-	0%	23,862	16%	23,862	16%	23,866	16%	23,862	16%
2207	C	SW	1,936	1%	7,222	5%	6,379	4%	6,519	4%	16,067	11%
Total			14,704	10%	76,704	52%	61,374	42%	64,687	44%	147,765	100%

Table 6, Table 7, Table 8, Table 9 and Table 10 summarize the opening, mature + old and old seral stage, as well as the oldgrowthness area for the W13 forested landbase at years 0, 10, 50, 100 and 200 of the 200-year planning horizon, respectively.



Table 6. W13 forested landbase seral stage and oldgrowthness area summary by broad cover group and species strata at year 0.

Year	BCG	Species Strata	Opening		Mature + Old		Old		Oldgrowthness		Total	
			Ha	%	Ha	%	Ha	%	Ha	%	Ha	%
2007	D	AW	6,983	3%	33,595	12%	755	0%	16,697	6%	67,384	25%
2007	D	BW	98	0%	47	0%	3	0%	19	0%	1,238	0%
2007	DC	AP	1,303	0%	3,073	1%	54	0%	1,462	1%	6,413	2%
2007	DC	AS	2,115	1%	14,410	5%	117	0%	7,674	3%	21,782	8%
2007	CD	PA	4,025	1%	3,095	1%	56	0%	2,387	1%	10,871	4%
2007	CD	SA	3,121	1%	9,850	4%	269	0%	5,780	2%	19,940	7%
2007	C	LT	18	0%	2,022	1%	822	0%	1,422	1%	6,523	2%
2007	C	PL	24,907	9%	11,263	4%	2,172	1%	11,155	4%	70,743	26%
2007	C	SB	4,178	2%	14,030	5%	1,452	1%	6,001	2%	43,473	16%
2007	C	SW	7,074	3%	10,712	4%	53	0%	3,949	1%	21,336	8%
Total			53,821	20%	102,097	38%	5,754	2%	56,546	21%	269,703	100%

Table 7. W13 forested landbase seral stage and oldgrowthness area summary by broad cover group and species strata at year 10.

Year	BCG	Species Strata	Opening		Mature + Old		Old		Oldgrowthness		Total	
			Ha	%	Ha	%	Ha	%	Ha	%	Ha	%
2017	D	AW	4,968	2%	41,857	16%	3,411	1%	15,855	6%	65,514	24%
2017	D	BW	7	0%	89	0%	-	0%	39	0%	1,238	0%
2017	DC	AP	1,206	0%	2,540	1%	135	0%	711	0%	6,365	2%
2017	DC	AS	777	0%	14,776	5%	1,269	0%	7,627	3%	20,248	8%
2017	CD	PA	1,542	1%	2,294	1%	93	0%	678	0%	10,421	4%
2017	CD	SA	3,158	1%	8,639	3%	332	0%	5,560	2%	19,253	7%
2017	C	LT	18	0%	2,800	1%	1,526	1%	1,618	1%	6,523	2%
2017	C	PL	8,867	3%	7,425	3%	1,279	0%	3,744	1%	71,242	26%
2017	C	SB	5,965	2%	13,278	5%	1,357	1%	5,622	2%	42,936	16%
2017	C	SW	10,999	4%	8,722	3%	145	0%	3,650	1%	25,964	10%
Total			37,507	14%	102,420	38%	9,547	4%	45,103	17%	269,703	100%

Table 8. W13 forested landbase seral stage and oldgrowthness area summary by broad cover group and species strata at year 50.

Year	BCG	Species Strata	Opening		Mature + Old		Old		Oldgrowthness		Total	
			Ha	%	Ha	%	Ha	%	Ha	%	Ha	%
2057	D	AW	6,486	2%	27,953	10%	4,094	2%	18,939	7%	54,938	20%
2057	D	BW	46	0%	968	0%	685	0%	717	0%	1,238	0%
2057	DC	AP	346	0%	1,593	1%	439	0%	910	0%	4,409	2%
2057	DC	AS	2,686	1%	6,838	3%	3,382	1%	4,308	2%	15,214	6%
2057	CD	PA	248	0%	2,353	1%	106	0%	453	0%	8,755	3%
2057	CD	SA	808	0%	2,744	1%	1,851	1%	2,086	1%	13,594	5%
2057	C	LT	-	0%	6,493	2%	2,800	1%	4,518	2%	6,523	2%
2057	C	PL	12,235	5%	11,108	4%	1,075	0%	2,172	1%	74,854	28%
2057	C	SB	3,245	1%	14,192	5%	5,275	2%	5,620	2%	40,932	15%
2057	C	SW	10,430	4%	5,400	2%	2,123	1%	2,395	1%	49,246	18%
Total			36,532	14%	79,641	30%	21,830	8%	42,118	16%	269,703	100%



Table 9. W13 landbase seral stage and oldgrowthness area summary by broad cover group and species strata at year 100.

Year	BCG	Species Strata	Opening		Mature + Old		Old		Oldgrowthness		Total	
			Ha	%	Ha	%	Ha	%	Ha	%	Ha	%
2107	D	AW	4,302	2%	18,390	7%	3,644	1%	14,638	5%	49,760	18%
2107	D	BW	80	0%	118	0%	94	0%	109	0%	1,238	0%
2107	DC	AP	137	0%	1,223	0%	466	0%	1,278	0%	3,137	1%
2107	DC	AS	521	0%	4,874	2%	1,484	1%	2,281	1%	11,252	4%
2107	CD	PA	535	0%	2,747	1%	214	0%	464	0%	4,992	2%
2107	CD	SA	2,224	1%	5,908	2%	4,461	2%	4,866	2%	14,352	5%
2107	C	LT	-	0%	6,523	2%	6,503	2%	6,147	2%	6,523	2%
2107	C	PL	10,368	4%	10,045	4%	2,341	1%	9,525	4%	79,449	29%
2107	C	SB	2,111	1%	26,015	10%	9,471	4%	12,268	5%	39,767	15%
2107	C	SW	11,390	4%	12,097	4%	3,738	1%	3,836	1%	59,233	22%
Total			31,668	12%	87,940	33%	32,414	12%	55,414	21%	269,703	100%

Table 10. W13 forested landbase seral stage and oldgrowthness area summary by broad cover group and species strata at year 200.

Year	BCG	Species Strata	Opening		Mature + Old		Old		Oldgrowthness		Total	
			Ha	%	Ha	%	Ha	%	Ha	%	Ha	%
2207	D	AW	5,046	2%	12,979	5%	4,842	2%	8,231	3%	23,771	9%
2207	D	BW	70	0%	185	0%	4	0%	162	0%	1,238	0%
2207	DC	AP	229	0%	327	0%	62	0%	165	0%	1,978	1%
2207	DC	AS	714	0%	3,008	1%	747	0%	1,234	0%	8,620	3%
2207	CD	PA	361	0%	851	0%	612	0%	1,336	0%	3,349	1%
2207	CD	SA	2,856	1%	11,573	4%	7,964	3%	13,650	5%	17,390	6%
2207	C	LT	-	0%	6,523	2%	6,523	2%	6,532	2%	6,523	2%
2207	C	PL	8,700	3%	18,348	7%	6,337	2%	19,456	7%	77,274	29%
2207	C	SB	1,376	1%	24,024	9%	22,810	8%	15,395	6%	35,208	13%
2207	C	SW	12,919	5%	27,340	10%	11,119	4%	9,258	3%	94,352	35%
Total			32,271	12%	105,159	39%	61,020	23%	75,419	28%	269,703	100%

Managed Landbase

Table 11, Table 12, Table 13, Table 14 and Table 15 summarize the opening, mature + old and old seral stage, as well as the oldgrowthness area for the W11 managed landbase at years 0, 10, 50, 100 and 200 of the 200-year planning horizon, respectively.



Table 11. W11 managed landbase seral stage and oldgrowthness area summary by broad cover group and species strata at year 0.

Year	BCG	Species Strata	Opening		Mature + Old		Old		Oldgrowthness		Total	
			Ha	%	Ha	%	Ha	%	Ha	%	Ha	%
2007	D	AW	3,113	4%	27,238	31%	410	0%	11,087	13%	53,185	61%
2007	D	BW	7	0%	15	0%	4	0%	10	0%	130	0%
2007	DC	AP	243	0%	835	1%	14	0%	369	0%	1,505	2%
2007	DC	AS	730	1%	3,702	4%	-	0%	1,604	2%	4,875	6%
2007	CD	PA	354	0%	807	1%	-	0%	71	0%	1,555	2%
2007	CD	SA	1,668	2%	3,182	4%	5	0%	1,237	1%	5,066	6%
2007	C	PL	1,140	1%	5,725	7%	57	0%	1,185	1%	11,588	13%
2007	C	SW	2,026	2%	6,663	8%	-	0%	635	1%	9,463	11%
Total			9,280	11%	48,167	55%	489	1%	16,200	19%	87,369	100%

Table 12. W11 managed landbase seral stage and oldgrowthness area summary by broad cover group and species strata at year 10.

Year	BCG	Species Strata	Opening		Mature + Old		Old		Oldgrowthness		Total	
			Ha	%	Ha	%	Ha	%	Ha	%	Ha	%
2017	D	AW	7,538	9%	23,041	26%	1,264	1%	10,888	12%	53,185	61%
2017	D	BW	-	0%	91	0%	14	0%	27	0%	130	0%
2017	DC	AP	137	0%	730	1%	71	0%	365	0%	1,505	2%
2017	DC	AS	1,089	1%	2,927	3%	74	0%	1,520	2%	4,875	6%
2017	CD	PA	296	0%	700	1%	-	0%	126	0%	1,555	2%
2017	CD	SA	1,480	2%	2,448	3%	20	0%	1,272	1%	5,066	6%
2017	C	PL	1,309	1%	4,893	6%	135	0%	2,229	3%	11,588	13%
2017	C	SW	2,991	3%	5,294	6%	-	0%	1,077	1%	9,463	11%
Total			14,842	17%	40,124	46%	1,578	2%	17,505	20%	87,369	100%

Table 13. W11 managed landbase seral stage and oldgrowthness area summary by broad cover group and species strata at year 50.

Year	BCG	Species Strata	Opening		Mature + Old		Old		Oldgrowthness		Total	
			Ha	%	Ha	%	Ha	%	Ha	%	Ha	%
2057	D	AW	6,643	8%	16,876	19%	1,395	2%	2,363	3%	53,185	61%
2057	D	BW	4	0%	120	0%	119	0%	100	0%	130	0%
2057	DC	AP	167	0%	643	1%	186	0%	228	0%	1,452	2%
2057	DC	AS	693	1%	871	1%	602	1%	658	1%	4,822	6%
2057	CD	PA	88	0%	501	1%	-	0%	133	0%	1,609	2%
2057	CD	SA	947	1%	631	1%	459	1%	481	1%	5,119	6%
2057	C	PL	723	1%	7,422	8%	3,044	3%	3,620	4%	11,588	13%
2057	C	SW	1,315	2%	3,483	4%	741	1%	2,072	2%	9,463	11%
Total			10,580	12%	30,547	35%	6,548	7%	9,656	11%	87,369	100%

Table 14. W11 managed landbase seral stage and oldgrowthness area summary by broad cover group and species strata at year 100.

Year	BCG	Species Strata	Opening		Mature + Old		Old		Oldgrowthness		Total	
			Ha	%	Ha	%	Ha	%	Ha	%	Ha	%
2107	D	AW	8,420	10%	11,463	13%	453	1%	1,914	2%	53,185	61%
2107	D	BW	32	0%	7	0%	7	0%	7	0%	130	0%
2107	DC	AP	302	0%	299	0%	25	0%	36	0%	1,263	1%
2107	DC	AS	789	1%	1,682	2%	51	0%	156	0%	4,431	5%
2107	CD	PA	211	0%	595	1%	22	0%	24	0%	1,797	2%
2107	CD	SA	609	1%	2,651	3%	383	0%	943	1%	5,510	6%
2107	C	PL	917	1%	6,293	7%	2,328	3%	3,732	4%	11,586	13%
2107	C	SW	906	1%	5,441	6%	2,256	3%	2,203	3%	9,465	11%
Total			12,185	14%	28,432	33%	5,525	6%	9,015	10%	87,369	100%



Table 15. W11 managed landbase seral stage and oldgrowthness area summary by broad cover group and species strata at year 200.

Year	BCG	Species Strata	Opening		Mature + Old		Old		Oldgrowthness		Total	
			Ha	%	Ha	%	Ha	%	Ha	%	Ha	%
2207	D	AW	9,302	11%	7,171	8%	180	0%	1,092	1%	53,185	61%
2207	D	BW	-	0%	124	0%	123	0%	101	0%	130	0%
2207	DC	AP	245	0%	381	0%	19	0%	135	0%	1,242	1%
2207	DC	AS	526	1%	1,849	2%	22	0%	442	1%	4,225	5%
2207	CD	PA	215	0%	348	0%	16	0%	52	0%	1,814	2%
2207	CD	SA	1,048	1%	1,130	1%	362	0%	424	0%	5,721	7%
2207	C	PL	1,265	1%	4,972	6%	2,324	3%	3,540	4%	10,200	12%
2207	C	SW	1,911	2%	3,714	4%	2,886	3%	3,088	4%	10,852	12%
Total			14,511	17%	19,688	23%	5,932	7%	8,873	10%	87,369	100%

Table 16, Table 17, Table 18, Table 19 and Table 20 summarize the opening, mature + old and old seral stage, as well as the oldgrowthness area for the W13 managed landbase at years 0, 10, 50, 100 and 200 of the 200-year planning horizon, respectively.



Table 16. W13 managed landbase seral stage and oldgrowthness area summary by broad cover group and species strata at year 0.

Year	BCG	Species Strata	Opening		Mature + Old		Old		Oldgrowthness		Total	
			Ha	%	Ha	%	Ha	%	Ha	%	Ha	%
2007	D	AW	5,345	3%	27,501	13%	693	0%	13,838	7%	57,786	28%
2007	D	BW	58	0%	44	0%	3	0%	18	0%	1,105	1%
2007	DC	AP	1,167	1%	2,882	1%	50	0%	1,317	1%	5,987	3%
2007	DC	AS	1,237	1%	12,909	6%	110	0%	6,579	3%	19,096	9%
2007	CD	PA	3,758	2%	2,848	1%	55	0%	2,233	1%	10,272	5%
2007	CD	SA	2,488	1%	8,772	4%	247	0%	4,791	2%	17,730	9%
2007	C	PL	23,060	11%	10,617	5%	2,131	1%	10,186	5%	66,718	32%
2007	C	SB	652	0%	4,882	2%	697	0%	2,767	1%	10,805	5%
2007	C	SW	5,286	3%	8,838	4%	42	0%	2,326	1%	16,917	8%
Total			43,050	21%	79,293	38%	4,028	2%	44,055	21%	206,415	100%

Table 17. W13 managed landbase seral stage and oldgrowthness area summary by broad cover group and species strata at year 10.

Year	BCG	Species Strata	Opening		Mature + Old		Old		Oldgrowthness		Total	
			Ha	%	Ha	%	Ha	%	Ha	%	Ha	%
2017	D	AW	4,956	2%	34,932	17%	3,151	2%	13,024	6%	55,916	27%
2017	D	BW	-	0%	-	0%	-	0%	32	0%	1,105	1%
2017	DC	AP	1,206	1%	2,306	1%	123	0%	601	0%	5,939	3%
2017	DC	AS	757	0%	12,939	6%	1,229	1%	6,771	3%	17,561	9%
2017	CD	PA	1,542	1%	2,033	1%	86	0%	572	0%	9,821	5%
2017	CD	SA	2,538	1%	7,510	4%	290	0%	4,700	2%	17,043	8%
2017	C	PL	8,867	4%	6,693	3%	1,201	1%	3,214	2%	67,217	33%
2017	C	SB	2,496	1%	3,489	2%	479	0%	2,329	1%	10,595	5%
2017	C	SW	9,250	4%	6,355	3%	94	0%	2,356	1%	21,219	10%
Total			31,612	15%	76,257	37%	6,653	3%	33,599	16%	206,415	100%

Table 18. W13 managed landbase seral stage and oldgrowthness area summary by broad cover group and species strata at year 50.

Year	BCG	Species Strata	Opening		Mature + Old		Old		Oldgrowthness		Total	
			Ha	%	Ha	%	Ha	%	Ha	%	Ha	%
2057	D	AW	5,107	2%	23,738	11%	3,576	2%	15,611	8%	45,341	22%
2057	D	BW	-	0%	902	0%	637	0%	668	0%	1,105	1%
2057	DC	AP	346	0%	1,342	1%	332	0%	743	0%	4,022	2%
2057	DC	AS	2,686	1%	5,075	2%	2,387	1%	3,054	1%	12,589	6%
2057	CD	PA	248	0%	1,992	1%	12	0%	238	0%	8,122	4%
2057	CD	SA	802	0%	1,161	1%	773	0%	862	0%	11,316	5%
2057	C	PL	12,235	6%	8,979	4%	436	0%	1,345	1%	70,829	34%
2057	C	SB	2,087	1%	615	0%	275	0%	984	0%	9,744	5%
2057	C	SW	10,143	5%	1,710	1%	176	0%	349	0%	43,347	21%
Total			33,657	16%	45,512	22%	8,603	4%	23,853	12%	206,415	100%



Table 19. W13 managed landbase seral stage and oldgrowthness area summary by broad cover group and species strata at year 100.

Year	BCG	Species Strata	Opening		Mature + Old		Old		Oldgrowthness		Total	
			Ha	%	Ha	%	Ha	%	Ha	%	Ha	%
2107	D	AW	3,891	2%	15,850	8%	3,044	1%	12,982	6%	40,163	19%
2107	D	BW	-	0%	78	0%	54	0%	78	0%	1,105	1%
2107	DC	AP	137	0%	991	0%	370	0%	1,112	1%	2,905	1%
2107	DC	AS	521	0%	3,301	2%	813	0%	1,207	1%	9,680	5%
2107	CD	PA	535	0%	2,165	1%	18	0%	195	0%	4,410	2%
2107	CD	SA	2,066	1%	2,584	1%	1,856	1%	2,158	1%	10,816	5%
2107	C	PL	10,368	5%	6,130	3%	321	0%	6,993	3%	75,533	37%
2107	C	SB	1,906	1%	728	0%	116	0%	647	0%	9,506	5%
2107	C	SW	11,320	5%	5,893	3%	174	0%	296	0%	52,298	25%
Total			30,743	15%	37,721	18%	6,766	3%	25,667	12%	206,415	100%

Table 20. W13 managed landbase seral stage and oldgrowthness area summary by broad cover group and species strata at year 200.

Year	BCG	Species Strata	Opening		Mature + Old		Old		Oldgrowthness		Total	
			Ha	%	Ha	%	Ha	%	Ha	%	Ha	%
2207	D	AW	2,964	1%	7,385	4%	2,945	1%	4,320	2%	14,173	7%
2207	D	BW	-	0%	145	0%	4	0%	135	0%	1,105	1%
2207	DC	AP	229	0%	327	0%	62	0%	165	0%	1,978	1%
2207	DC	AS	708	0%	3,008	1%	747	0%	1,234	1%	8,620	4%
2207	CD	PA	361	0%	716	0%	476	0%	1,206	1%	3,213	2%
2207	CD	SA	2,560	1%	6,406	3%	3,062	1%	8,723	4%	11,604	6%
2207	C	PL	8,700	4%	16,454	8%	4,444	2%	16,456	8%	75,380	37%
2207	C	SB	1,011	0%	1,322	1%	381	0%	961	0%	9,045	4%
2207	C	SW	12,867	6%	16,653	8%	842	0%	1,389	1%	81,297	39%
Total			29,401	14%	52,417	25%	12,963	6%	34,590	17%	206,415	100%

Figure 1, Figure 3 and Figure 5 illustrate the distribution of opening, mature and old seral stage classes on the forested landbase at years 0, 10 and 50 of the 200-year planning horizon, respectively. Figure 2, Figure 4 and Figure 6 illustrate the distribution and degree of oldgrowthness of the forested landbase at years 0, 10 and 50 of the 200-year planning horizon, respectively. As described in the Supplemental Information section of *Appendix XXIII - Commitments*, the higher the oldgrowthness value, the higher the amount of old growth characteristics in the stand.

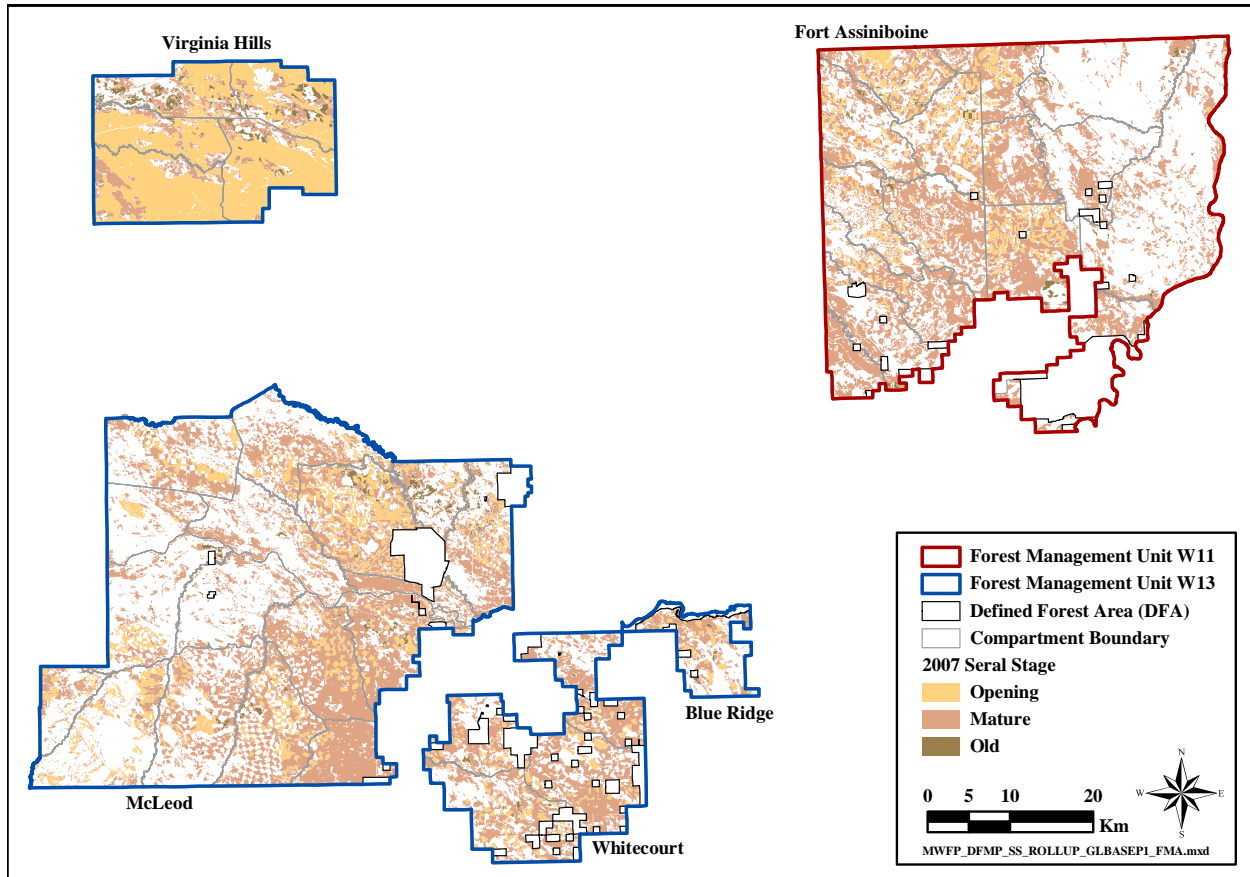


Figure 1. DFA forested landbase seral stage class distribution at year 0.

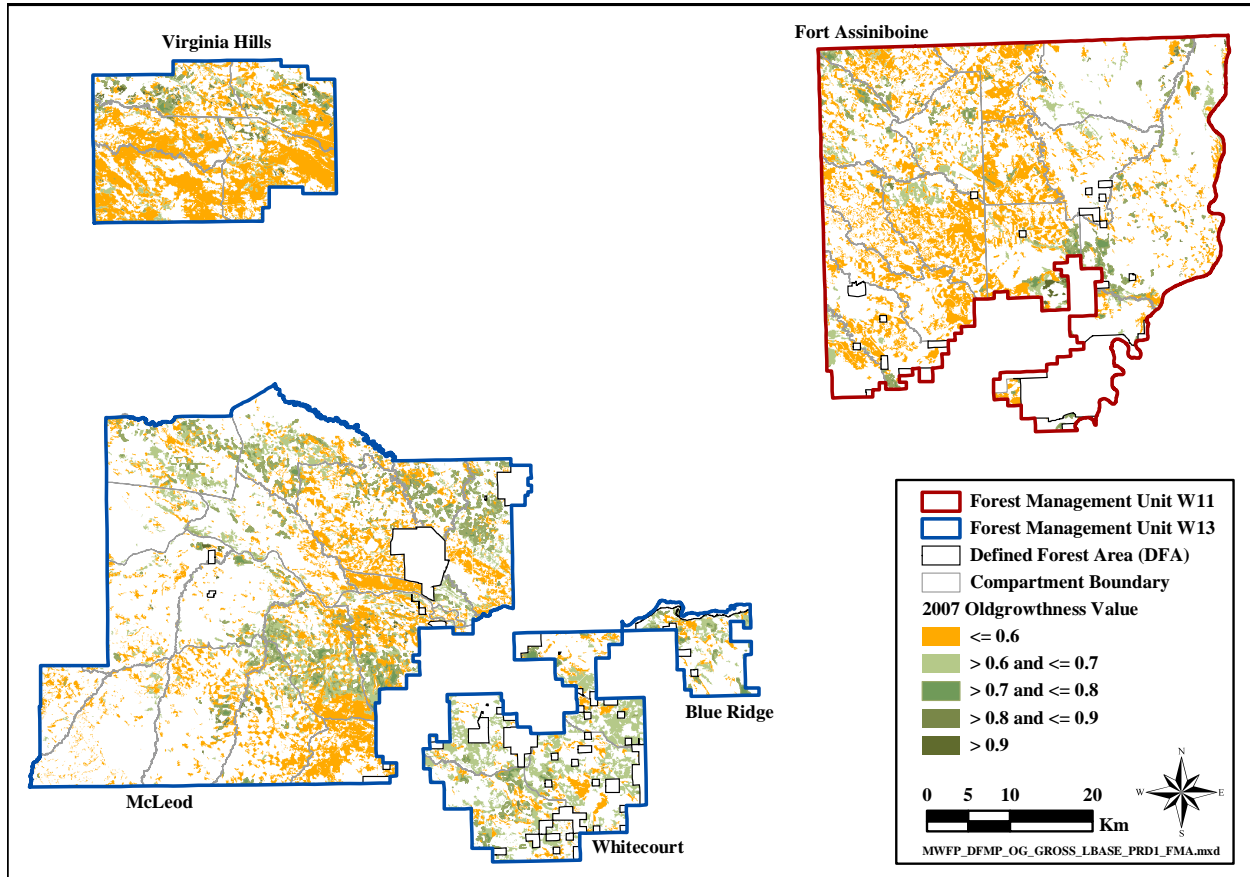


Figure 2. DFA forested landbase oldgrowthness distribution and degree at year 0.

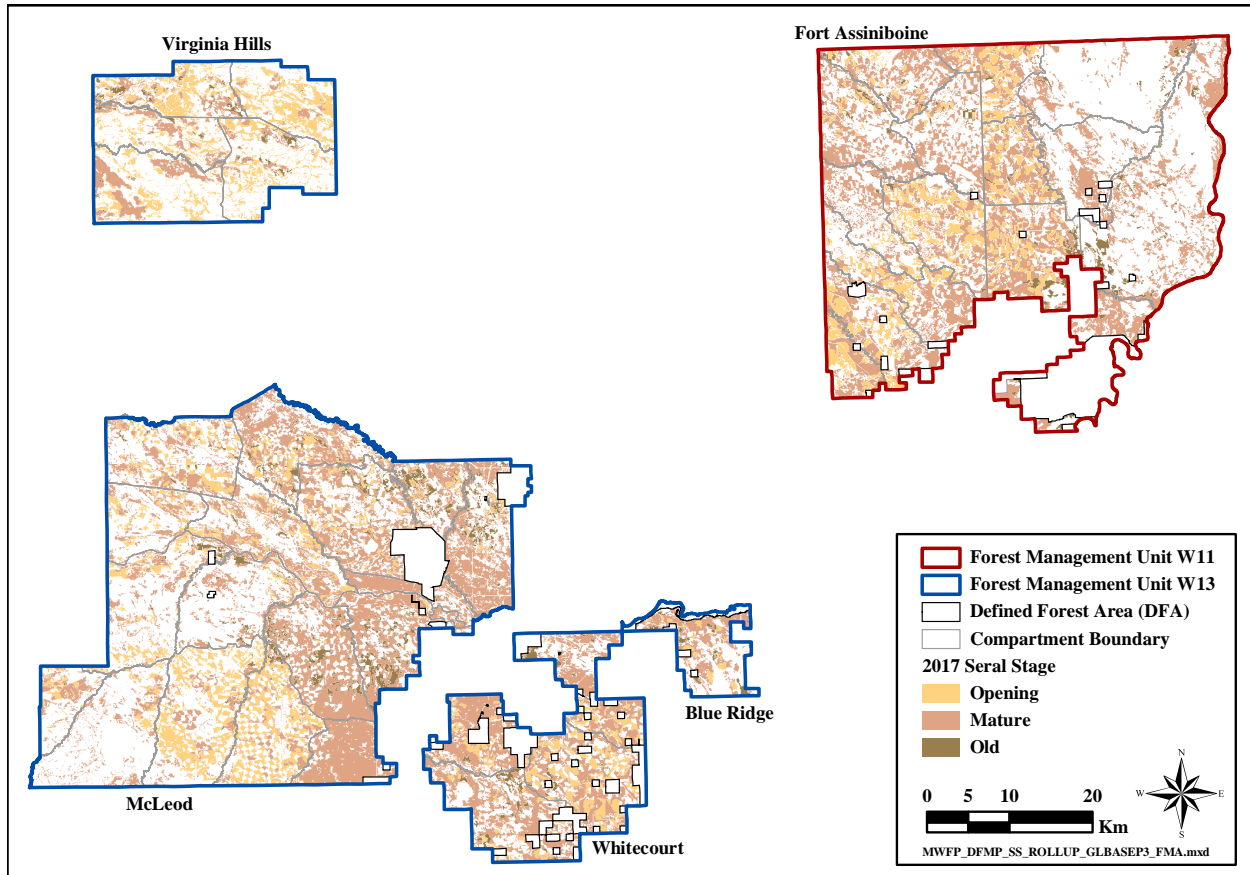


Figure 3. DFA forested landbase seral stage class distribution at year 10.

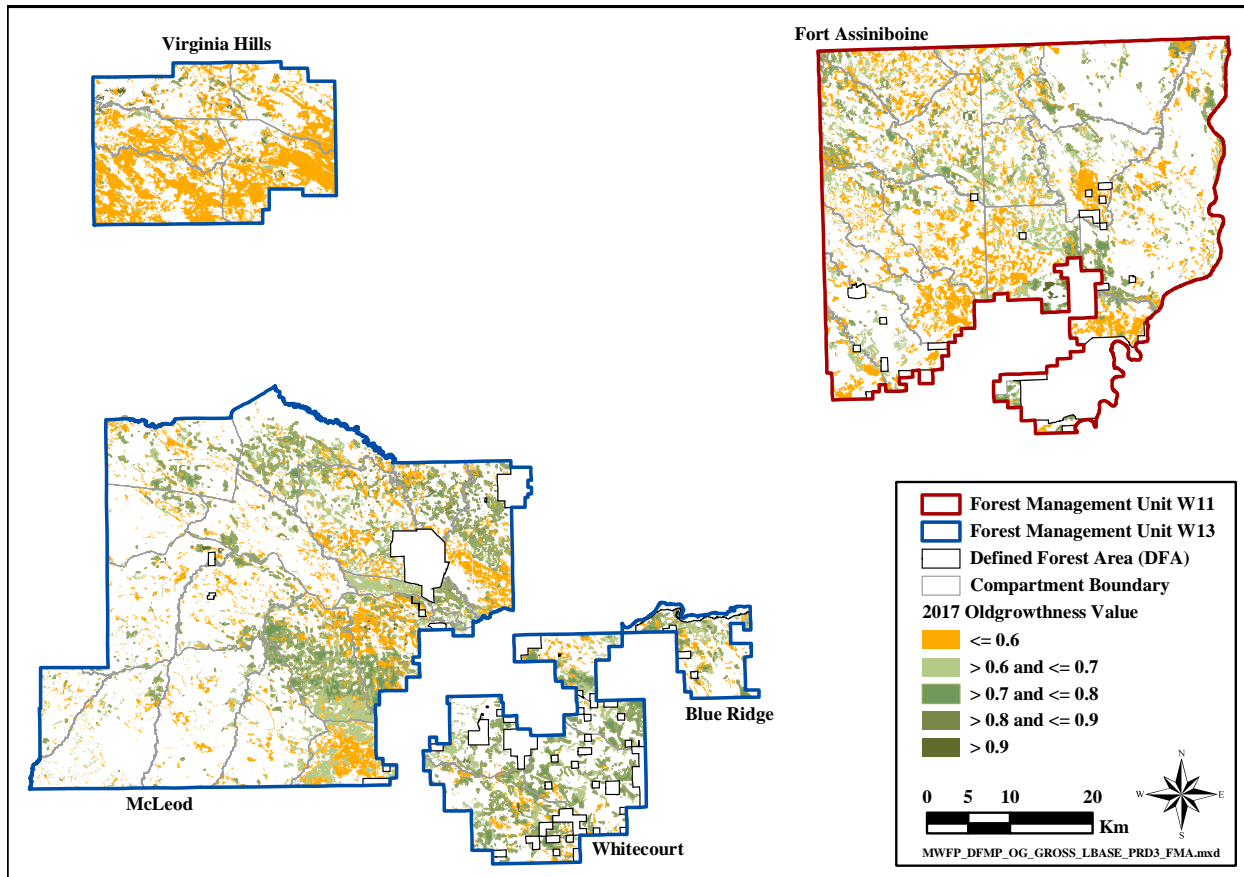


Figure 4. DFA forested landbase oldgrowthness distribution and degree at year 10.

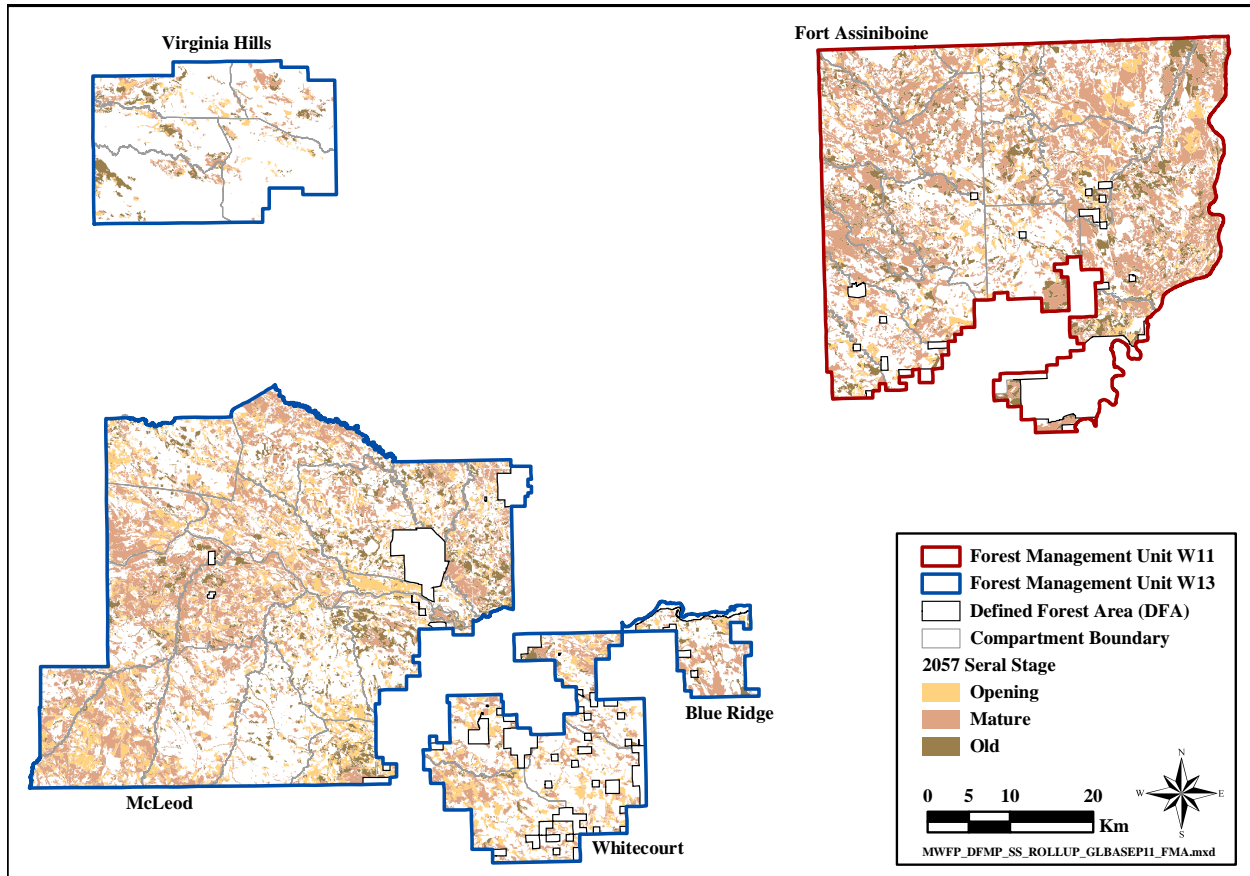


Figure 5. DFA forested landbase seral stage class distribution at year 50.