



**Millar Western Forest Products Ltd.**

# **Chapter 5 – Forecasting and the Preferred Forest Management Scenario**

**2007-2016 Detailed Forest Management Plan**

November 15, 2007





# SUMMARY

---

A requirement of the Detailed Forest Management Plan is that forecasting be undertaken to predict future forest impacts from management activities and that this information be used to develop management strategies. The end result of the forecasting process is a Preferred Forest Management Scenario, and its associated spatially explicit harvest sequence, which best meet the objectives from the forest. These objectives vary from timber production and water run off levels, to biological diversity retention. The first 20 years of this harvest sequence is referred to as the Spatial Harvest Sequence, which must be followed for at least the next 10 years based on the Alberta Forest Management Planning Standard (Version 4.1) (ASRD, 2006).

Due to the wide range of objectives that were desired from the forest it was recognized that individuals or small groups could not complete the entire process. Therefore Millar Western brought together experts from numerous different fields to create inputs and develop indicators and targets for all of the different values on the landbase. These experts created impact assessment groups which were tasked with defining inputs, indicators, and targets for the values and objectives associated with their respective areas of expertise.

Some of the groups were able to create indicators that could be loaded directly into the forecasting model to ensure that these indicators were being sustained at targeted levels. One such indicator was the amount of old growth area on the landbase. Other groups were able to load proxies into the model that represented the indicator of interest. Examples of indicators that were used as proxies include downed wood debris, and snag densities, which approximated the indicator of interest, habitat.

All of the groups were tasked with setting targets for the different indicators, but in many cases these targets conflicted with others on the forest. Before decisions were made regarding final targets to be implemented in the forecasting model that would be used to create the Preferred Forest Management Scenario, it was necessary to understand the trade offs that were associated



with the different targets. These trade-off analyses allowed the stakeholders in this process the ability to make informed decisions about the acceptable levels of indicators.

Through an extensive process of input, indicator development, refinement and trade off analyses, a final set of objectives were established and used to create a Preferred Forest Management Scenario for each FMU:

- FMU W11:
  - Maintain the approved 95,000 m<sup>3</sup>/yr conifer surge cut from 2004 Preliminary Forest Management Plan that was developed to mitigate the effect of the conifer harvest reduction on the quota holders;
  - Maintain the Preliminary Forest Management Plan compartment sequence, and
- FMU W13:
  - Develop a conifer surge cut to reduce the risk and susceptibility of W13 to mountain pine beetle infestation and alter the pine age class distribution to be in line with the Alberta government's healthy pine forest strategy and the requirements of the mountain pine beetle Interpretive Bulletin;
  - Maintain a 50-50 spruce-pine harvest volume ratio;
  - Meet Weyerhaeuser's DTA commitments from the Whitecourt Mountain compartments. This required a small deciduous surge cut to address incidental deciduous volume generated from the conifer surge cut; and
  - Align the compartment sequence with the Alberta government's mountain pine beetle compartment risk rating.

In the opinion of the management team, the Preferred Forest Management Scenarios best met the social, biological, and economic objectives desired from the forest. The proposed harvest levels at a 15+/10 cm utilization by FMU and operator are provided in Table 1. Not included in these volumes, is a 1% volume reduction for structure retention that will be applied during layout and harvesting operations. The Spatial Harvest Sequence for both units can be seen in Map 1 and Map 2 for W11 and W13 respectively.



**Table 1. Proposed harvest allocation for 2007-2016 from the Preferred Forest Management Scenarios.**

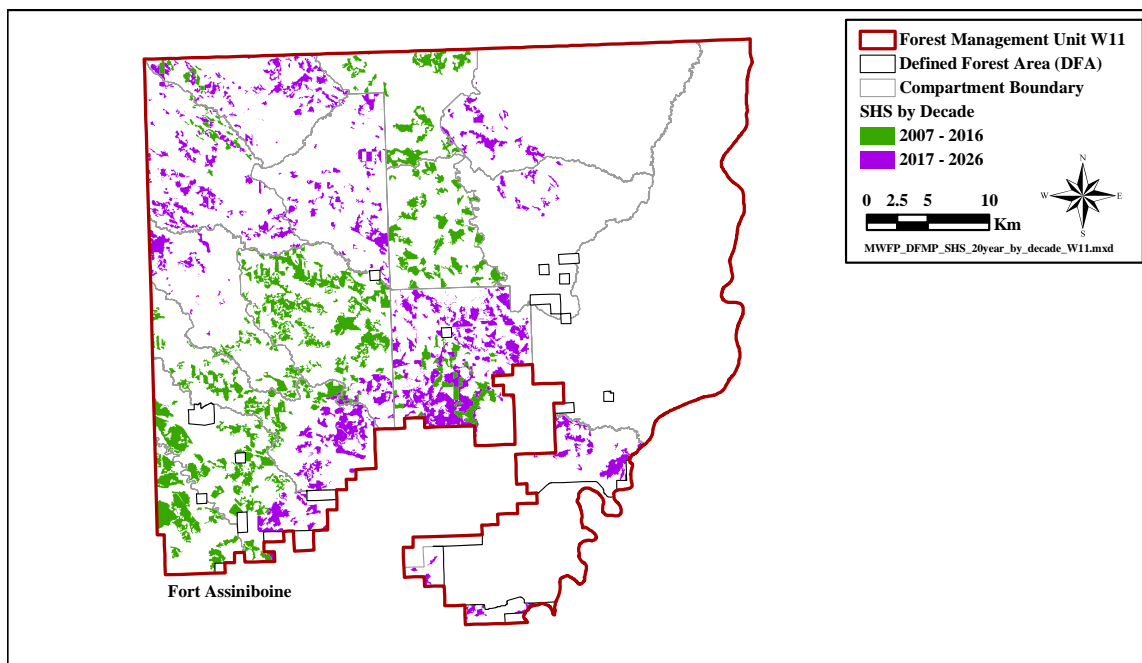
Company Name	Disposition Number / FMA Ref.	FMA/ FMU/ Grazing	Deciduous AAC (%)	Deciduous AAC (m3/yr)	Incidental Deciduous (%)	Incidental Deciduous (m3/yr)	Coniferous AAC (%)	Coniferous AAC (m3/yr)
<b>W13</b>								
MTU	[8(2)(e)(i)]	FMA						30,000
MTU*	[8(2)(e)(ii)]	FMA			100	861		
Weyerhaeuser	DTAW130001	FMU		45,000				
MWFP (QUOTA)	CTQW130002	FMU					4.42	19,264
MWFP (FMA)	FMA970034	FMA		157,099				376,925
MWFP	CTQW130001	Grazing					100.00	9,655
MWFP (Requested)**		Grazing	100.00	6,452				
<b>Sub Total</b>				<b>208,551</b>		<b>861</b>		
<b>Total</b>				<b>209,412</b>				<b>435,844</b>
<b>W11</b>								
MWFP	FMA970034	FMA		103,520				
OK Lumber	CTQ110005	FMU					21.05	19,975
Fort Assiniboine Lumber	CTQ110004	FMU					6.26	5,940
Spruceland Millworks Inc.	CTQ110006	FMU					72.70	68,987
MWFP (Requested)**		Grazing	100.00	2,529				
<b>Total</b>				<b>106,049</b>				<b>94,903</b>
<b>FMA</b>								
Area Residents	[8(2)(d)]	IN				1000***		

\* within Whitecourt and Blue Ridge subunits

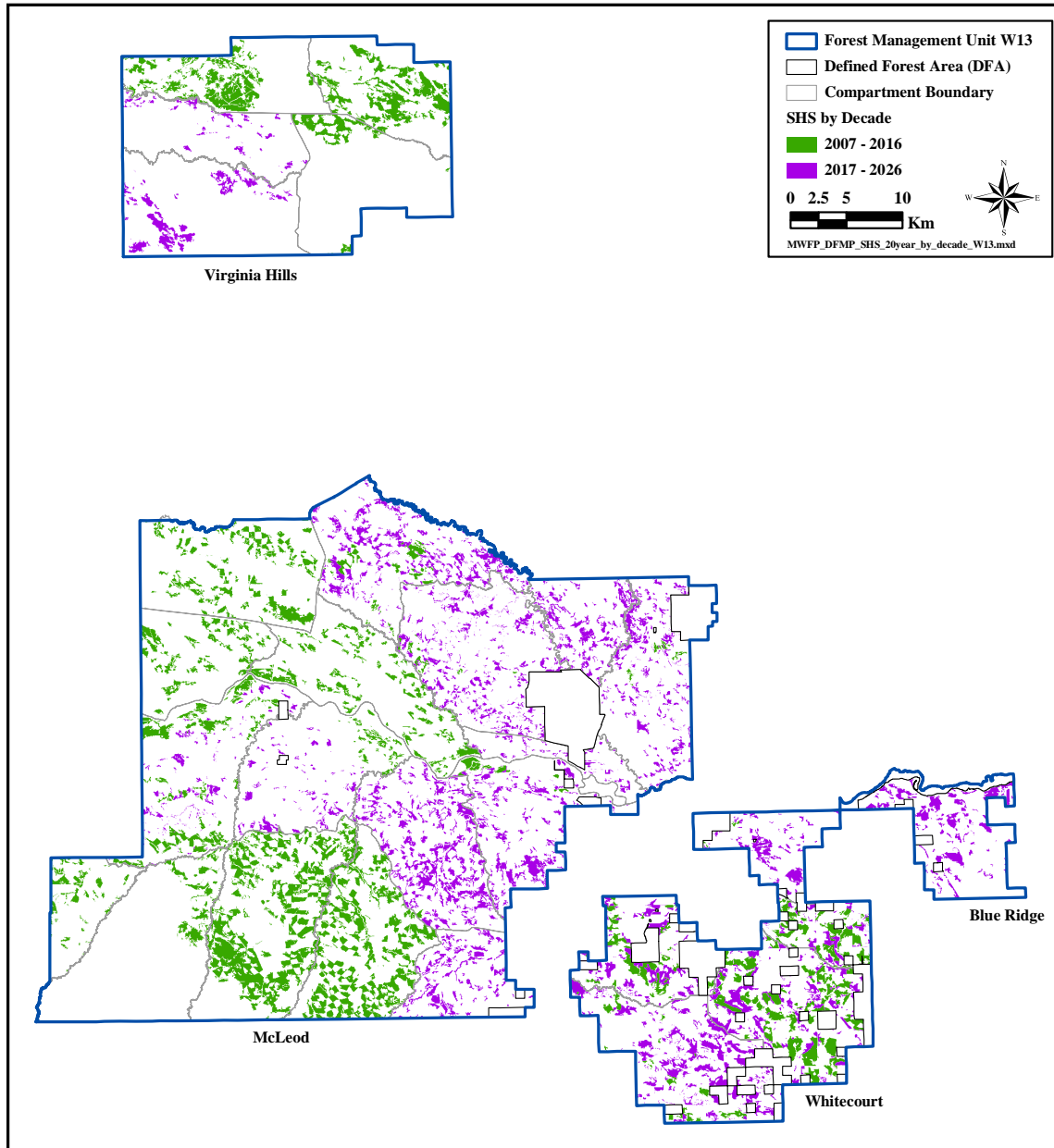
\*\* July 18, 2006 letter to D.A. Sklar, re: DTA's for unallocated deciduous volume

\*\*\* conifer/deciduous(birch) Not accounted in calculations

Represent basis for calculations



**Map 1. W11 Preferred Forest Management Scenario Spatial Harvest Sequence.**



**Map 2. W13 Preferred Forest Management Scenario Spatial Harvest Sequence.**

The Preferred Forest Management Scenarios tracked numerous indicators and many of these indicators achieved the desired targets. The indicators varied by the Forest Management Unit.

In W13 mountain pine beetle was the key management issue. During the planning process the extent of mountain pine beetle spread into Alberta escalated dramatically. A Preferred Forest Management Scenario for W13 had almost been completed when the full extent of the threat posed by mountain pine beetle was realized both from a provincial and local perspective. Stands within the FMA became infested with mountain pine beetle in 2006, many years sooner than predicted by experts and available spread models. To address this, planning evolved, with an increasing emphasis on the reduction in risk of and susceptibility to mountain pine beetle



infestation in W13. Though mountain pine beetle became a key indicator during the planning horizon, it was only one of the indicators of interest in the planning process. The growing stock of merchantable timber, the amount of old forest area, and the size of patches, both old and young and water runoff are just a few examples of the indicators incorporated into the W13 Preferred Forest Management Scenario.

In W11 Millar Western does not have rights to the coniferous timber in the unit, and the operators in the unit did not wish to address mountain pine beetle in the current plan. Most other objectives that were incorporated in the W13 scenario were also incorporated in W11. An example of a W11 specific indicator is early winter access wood for harvesting, which is a key operational issue that was included in the development of the W11 Preferred Forest Management Scenario.

Overall the Preferred Forest Management Scenarios developed as a part of the 2007-2016 Detailed Forest Management Plan represent the result of a progressive and innovative planning process. The plan succeeded in:

- integrating a group of experts from wide ranging disciplines into an effective multi-disciplinary planning team to address critical management issues;
- expanding the number and scope of values, represented as indicators directly considered in the trade-off process used to develop the Preferred Forest Management Scenario;
- using more indicators, representing values as drivers in the development of the Preferred Forest Management Scenario;
- achieving a significant reduction in mountain pine beetle risk to the forest while balancing the conflicting values of biodiversity maintenance and increases in water runoff; and
- involving a wide range of harvesting operators in the development of an effective Spatial Harvest Sequence.







## Table of Contents

<b>1. OVERVIEW .....</b>	<b>1</b>
1.1 BACKGROUND.....	1
1.2 HISTORIC TIMBER SUPPLY .....	2
1.3 DOCUMENT STRUCTURE .....	5
<b>2. IMPACT ASSESSMENT GROUPS AND FORECASTING METHODS.....</b>	<b>7</b>
2.1 INTRODUCTION .....	7
2.2 IAG OVERVIEW .....	9
2.2.1 <i>Timber Supply Impact Assessment Group</i> .....	9
2.2.2 <i>Fire IAG</i> .....	10
2.2.3 <i>FORWARD IAG</i> .....	11
2.2.4 <i>Biodiversity Assessment Project IAG</i> .....	12
2.2.5 <i>Carbon IAG</i> .....	13
2.2.6 <i>Visual Quality</i> .....	13
2.3 FORECASTING PROCESS AND SCENARIO DEVELOPMENT .....	14
<b>3. PATCHWORKS LANDBASE SUMMARY .....</b>	<b>17</b>
3.1 LANDBASE DEVELOPMENT SUMMARY .....	18
3.1.1 <i>Spatial Processing Summary</i> .....	18
3.1.2 <i>Attribute Processing Summary</i> .....	20
3.1.3 <i>Forecasting Themes and Additional Attributes</i> .....	21
3.2 FINAL LANDBASE SUMMARY .....	22
<b>4. TIMBER YIELD CURVE SUMMARY .....</b>	<b>25</b>
4.1 TIMBER YIELD STRATIFICATION .....	25
4.2 TIMBER YIELD CURVES .....	26
4.2.1 <i>Utilization Standard</i> .....	26
4.2.2 <i>Timber Yield Curve Sets</i> .....	27
4.2.3 <i>Timber Yield Curves before Forecasting Changes</i> .....	28
4.3 CHANGES TO TIMBER YIELD CURVES FOR FORECASTING .....	42
4.3.1 <i>Cull</i> .....	42
4.3.2 <i>Regeneration Lag</i> .....	42
4.3.3 <i>Full Timber Yield Curve Set</i> .....	43
<b>5. FORECASTING INPUTS AND ASSUMPTIONS.....</b>	<b>45</b>
5.1 OVERVIEW .....	45
5.2 MODELING TOOLS .....	45
5.2.1 <i>Woodstock</i> .....	46
5.2.2 <i>Patchworks</i> .....	47
5.3 PLANNING HORIZON .....	47
5.4 FORECASTING STRATA DEFINITIONS.....	48
5.5 LIFESPAN AND SUCCESSION .....	48
5.6 MINIMUM HARVEST AGES .....	49



5.7 STAND TRANSITIONS ..... 50

5.8 SILVICULTURE REGIMES ..... 53

5.9 UNDERSTORY MANAGEMENT ..... 53

5.10 NATURAL DISTURBANCE ..... 53

5.11 LANDBASE LOSSES ACCOUNTED ..... 54

5.12 MOUNTAIN PINE BEETLE ..... 54

    5.12.1 ASRD MPB Ranking ..... 55

    5.12.2 Millar Western MPB Ranking..... 58

5.13 PATCHES (OPENING AND OLD) ..... 58

    5.13.1 Opening Patch ..... 59

    5.13.2 Old Patch ..... 59

5.14 SERAL STAGES ..... 59

5.15 BIODIVERSITY ASSESSMENT PROGRAM (BAP) ..... 62

5.16 FIRE FUEL TYPES ..... 63

5.17 HYDROLOGY ..... 65

5.18 EARLY WOOD ..... 69

5.19 ACCESS SCHEDULE ..... 70

    Chickadee Fire ..... 75

    FORWARD..... 75

    Planned Blocks..... 75

    Windfall Burn ..... 75

    Grazing Leases..... 75

    Athabasca Flats ..... 75

    Huestis Demonstration Forest..... 76

    Previously Thinned ..... 76

5.20 OPERATOR ZONES OF INTEREST ..... 76

5.21 ECONOMICS ..... 78

    5.21.1 Piece Size ..... 78

5.22 VISUAL QUALITY ..... 81

5.23 STRUCTURE RETENTION ..... 82

**6. PREFERRED FOREST MANAGEMENT SCENARIOS..... 83**

6.1 BACKGROUND..... 83

6.2 FOREST MANAGEMENT APPROACH AND OBJECTIVES ..... 84

6.3 FORECASTING GOALS ..... 86

    6.3.1 W11 PFMS Goals ..... 86

        Harvest ..... 87

        Growing Stock ..... 89

        Opening Patch..... 90

        Oldgrowthness Area..... 91

        Oldgrowthness Patch ..... 92

        Goal Summary ..... 93

    6.3.2 W13 PFMS Goals ..... 93

        Harvest ..... 93

        Post Harvest Stand Conversion..... 95

        Opening Patch..... 95



Oldgrowthness Area.....	97
Oldgrowthness Patch .....	99
Growing Stock .....	99
Mountain Pine Beetle.....	100
Mixedwood Retention.....	101
Goal Summary .....	102
6.4    DETAILED RESULTS .....	103
6.4.1 <i>W11 Detailed Results</i> .....	103
Harvest Indicators .....	103
Inventory Indicators .....	113
Watershed Summary .....	130
6.4.2 <i>W13 Detailed Results</i> .....	135
Harvest Indicators .....	136
Inventory Indicators .....	150
Watershed Indicators .....	169
<b>7.    MANAGEMENT ISSUES AND DECISIONS.....</b>	<b>177</b>
7.1    BACKGROUND.....	177
7.2    VARIABLE RETENTION.....	178
7.3    SHE'S/BAP CURVES.....	178
7.4    OBJECTIVE FUNCTION.....	179
7.4.1 <i>Results</i> .....	179
7.4.2 <i>Discussion</i> .....	180
7.5    GROWING STOCK.....	180
7.5.1 <i>Background</i> .....	180
7.5.2 <i>Results</i> .....	181
7.5.3 <i>Discussion</i> .....	182
7.6    YIELD CURVES.....	182
7.6.1 <i>Fully Stocked Regeneration</i> .....	182
7.6.2 <i>Pine Site Index Yield Increase</i> .....	183
Tree Improvement Yield Curves .....	184
7.7    STAND CONVERSION.....	185
7.7.1 <i>Background</i> .....	185
7.7.2 <i>Results and Discussion</i> .....	185
7.7.3 <i>Decision</i> .....	185
7.8    SUCCESSION.....	186
7.8.1 <i>Background</i> .....	186
7.8.2 <i>Results and Discussion</i> .....	188
7.9    DFA SILVICULTURE COMMITTEE .....	188
7.10   HYDROLOGY .....	190
7.10.1 <i>Background</i> .....	190
7.10.2 <i>Discussion</i> .....	190
7.11   SURGE CUT .....	192
7.11.1 <i>Background</i> .....	192
7.11.2 <i>Results</i> .....	193
7.11.3 <i>Discussion</i> .....	193



7.12 CARRYOVER ..... 194  
7.12.1 Background..... 194  
7.12.2 Results..... 194  
7.12.3 Discussion..... 195  
7.13 OLD GROWTH ..... 196  
7.13.1 Background..... 196  
7.13.2 Outcome ..... 198  
7.14 OLDGROWTHNESS LEVEL..... 198  
7.14.1 Background..... 198  
7.14.2 Results..... 198  
7.14.3 Results..... 199  
7.14.4 Discussion..... 201  
7.15 PATCH TARGETS ..... 202  
7.15.1 Background..... 202  
7.16 SPECIES OF SPECIAL CONCERN ..... 203  
7.17 COMPARTMENT SEQUENCE CONTROL..... 203  
7.18 PLANNED BLOCKS ..... 204  
7.19 CROP PLANS ..... 204  
7.19.1 Background..... 204  
7.19.2 Results..... 205  
7.19.3 Discussion..... 205  
7.20 W11 INCIDENTAL CONIFEROUS REPLACEMENT ..... 205  
7.20.1 Results..... 206  
7.20.2 Discussion..... 207  
7.21 CARBON REPORTING ..... 208  
7.22 MINIMUM HARVEST AGE..... 208  
7.22.1 Pine ..... 208  
Background..... 208  
Results..... 209  
Discussion..... 211  
7.22.2 Black Spruce ..... 211  
Background..... 211  
Results..... 213  
Discussion..... 215  
7.23 LONG RUN SUSTAINED YIELD AVERAGE (LRSYA) ..... 216  
7.23.1 Background..... 216  
7.23.2 Results..... 216  
7.24 MOUNTAIN PINE BEETLE (MPB) ..... 218  
7.25 SHS REVIEW..... 219  
7.25.1 Background..... 219  
August 10, 2005 review and sequence..... 220  
Fall 2006 Review ..... 220  
7.26 BLACK SPRUCE THINNING ..... 221  
7.26.1 Background..... 221  
7.26.2 Results..... 222  
7.26.3 Discussion..... 222



7.27 BLACK SPRUCE NET DOWN ..... 223

    7.27.1 Background..... 223

    7.27.2 Results..... 223

7.28 INSIDE/OUTSIDE FMA HARVEST ..... 225

    7.28.1 Background..... 225

    7.28.2 Results..... 226

    7.28.3 Discussion..... 226

7.29 ANNUAL UPDATE PROCEDURE..... 227

    7.29.1 Background..... 227

    7.29.2 Results and Discussion ..... 229

7.30 GOVERNMENT REQUESTED SENSITIVITIES ..... 232

    7.30.1 Background..... 232

    7.30.2 Results and Discussion ..... 233

        W11..... 233

        W13..... 234

    7.30.3 Summary ..... 235

**8. CONCLUSION ..... 237**

**9. REFERENCES..... 239**

**10. ANNEXES ..... 241**

**ANNEX I SHS MAPS..... 243**

**ANNEX II LETTERS ..... 245**

**ANNEX III PLANNING STANDARD TABLE 5.12 ..... 255**

**ANNEX IV PFMSS GOAL WEIGHTINGS..... 259**

**ANNEX V DIGITAL DATA..... 261**





## List of Tables

Table 1.	Historical harvest levels from FMU W11, previously referred to as W3 east. ....	3
Table 2.	Historical harvest levels from FMU W13, previously known as W9 and W5N. ....	5
Table 3.	Summary of landbase deletions. ....	20
Table 4.	Unmanaged modeling landbase summary (with SHS reviewed black spruce subjective deletion). ....	22
Table 5.	Managed landbase summary (with SHS reviewed black spruce deletion) for the modeling landbase. ....	23
Table 6.	W11 yield strata relationship to species strata and broad cover group. ....	26
Table 7.	W13 yield strata relationship to species strata and broad cover group. ....	26
Table 8.	Utilization parameters used in yield curve creation. ....	27
Table 9.	Percent cull by volume type and FMU. ....	42
Table 10.	Regeneration lags by FMU and broad cover group. ....	43
Table 11.	Volume yield curves included in the Millar Western DFMP. ....	44
Table 12.	Broad cover group, species strata and BAP strata relationships. ....	48
Table 13.	Succession rules used in the PFMSs. ....	49
Table 14.	W11 minimum harvest ages by origin. ....	50
Table 15.	W13 minimum harvest ages by origin and TPR. ....	50
Table 16.	Response to treatment matrix used in the PFMSs. ....	52
Table 17.	ASRD MPB ranking. ....	57
Table 18.	Seral stages used in the forecasting for the 2007-2016 DFMP. ....	60
Table 19.	CFS Fuel type codes by BAP strata and age group. ....	64
Table 20.	Non-Forested RCs used in the forecasting model. ....	68
Table 21.	Criteria, values and objectives addressed in forecasting. ....	85
Table 22.	Harvest levels achieved from the W11 PFMS. ....	104
Table 23.	Harvest volume by decade and species strata from W11 PFMS. ....	107
Table 24.	Harvest volume from the FMA, and non-FMA area by company from the W11 PFMS. ....	108
Table 25.	Landbase areas compared to the first 10 years of the SHS. ....	109
Table 26.	2007-2016 area harvested and regenerated by operator and species strata from the W11 PFMS. ....	110
Table 27.	W11 ASRD mountain pine beetle rank 1 & 2 areas from 2007. ....	115
Table 28.	Increase in RC above baseline conditions for selected 3 <sup>rd</sup> order watersheds in W11. ....	132
Table 29.	Percent increase in RC above baseline for W11 1 <sup>st</sup> order watersheds with at least 50% of their area within the DFA. ....	135
Table 30.	Harvest volume by period from the W13 PFMS. ....	137
Table 31.	Volume harvested in first 20 years by species strata from the W13 PFMS. ....	140
Table 32.	Harvest volume from the FMA, and Non-FMA area from the W13 PFMS. ....	141
Table 33.	Landbase areas compared to the first 10 years of the SHS. ....	142
Table 34.	Area harvested and regenerated by strata from the W13 PFMS. ....	147
Table 35.	Area harvested by operator from the W13 PFMS. ....	147
Table 36.	Area regenerated by operator and species strata from the first decade of the W13 PFMS. ....	148
Table 37.	W13 ASRD MPB Rank 1 & 2 area and percent reduction. ....	152
Table 38.	Increase in RC above baseline conditions for W13 3 <sup>rd</sup> order watersheds 90% within the DFA. ....	171
Table 39.	Changes in RC above baseline for W13 1 <sup>st</sup> order watersheds with at least 50% of their area within the DFA. ....	174
Table 40.	Modelling objective and Run Number by FMU. ....	179
Table 41.	Objective function percent change in harvest levels for FMU W11. ....	179
Table 42.	Objective function percent change in harvest levels for FMU W13. ....	180



Table 43. Scenarios used to analyze the effect of the non-declining growing stock constraint. .... 181

Table 44. Percent change to the harvest level, coniferous, deciduous, and total, from adding an ending growing stock constraint based on different objective functions in W11. .... 181

Table 45. Percent change to the harvest level, coniferous, deciduous, and total, from adding an ending growing stock constraint based on different objective functions in W13. .... 181

Table 46. The percent change to the coniferous, deciduous and total harvest levels for W11 when fully stocked regeneration is assumed. .... 182

Table 47. The percent change to the coniferous, deciduous and total harvest levels for W13 when fully stocked regeneration is assumed. .... 183

Table 48. Harvest levels with and without the Pine SI increase. .... 183

Table 49. Effect of different levels of tree improvement. .... 184

Table 50. Full transitions decided early on in the forecasting process. .... 187

Table 51. Final simplified transitions used in the forecasting. .... 188

Table 52. Even flow harvest level and conifer surge cut scenarios from W11 along with the percentage changes from the even flow scenario. .... 193

Table 53. Even flow harvest level and conifer surge cut scenarios from W13 along with the percentage changes from the even flow scenario. .... 193

Table 54. Harvest levels from selected runs given different levels of deciduous carryover in W11. . 195

Table 55. Harvest levels from selected runs given different levels of coniferous carryover in W11. 195

Table 56. Old growth definitions analyzed. .... 197

Table 57. Percent area of old growth in 2004 under different definitions. .... 197

Table 58. Scenario listing for Oldgrowthness impacts. .... 198

Table 59. W11 incidental coniferous replacement strategy. .... 207

Table 60. Effect of modelling the incidental conifer replacement strategy on the post coniferous surge harvest level. .... 207

Table 61. PI Minimum harvest age scenarios by flow constraint and harvest age. .... 209

Table 62. SB minimum harvest age by run name and number .... 212

Table 63. Average harvest age in years by decade and over the planning horizon. .... 215

Table 64. Example Calculation showing how increasing the Sb minimum harvest age would cause a double reduction in the Sb harvest proportion. .... 216

Table 65. W11 LRSYA based on natural curves. .... 217

Table 66. W13 LRSYA based on natural curves. .... 217

Table 67. W13 ASRD MPB Rank 1 & 2 areas and percentage reduction from PFMS. .... 219

Table 68. Harvest level effect of different Sb treatment regimes. .... 222

Table 69. Inside/outside FMA harvest calculations. .... 226

Table 70. Maximum landbase loss permitted before a required AAC recalculation. .... 227

Table 71. Area affected by Oil and Gas activity annually. .... 229

Table 72. Achieved harvest levels from different scenarios. .... 229

Table 73. Theoretical decrease and maximum decreases from annual update method in W11. .... 230

Table 74. Table 5. Theoretical decrease and maximum decreases from annual update method in W13. 231

Table 75. Model Constraints for W11 by scenario. .... 232

Table 76. Model constraints for W13 by scenario. .... 232

Table 77. W11 Average harvest volumes by scenario. .... 233

Table 78. W13 Average harvest volumes by scenario. .... 234

Table 79. Recommended AAC's from the PFMSs. .... 238





## List of Figures

Figure 1.	Forecasting information and IAG relationship flowchart .....	15
Figure 2.	Forecasting trade-off and the decision process. ....	16
Figure 3.	W11 base natural stand yield curves. ....	29
Figure 4.	W11 base managed stand yield curves. ....	30
Figure 5.	W13 base natural stand yield curves (1 of 4). ....	31
Figure 6.	W13 base natural stand yield curves (2 of 4). ....	32
Figure 7.	W13 base natural stand yield curves (3 of 4). ....	33
Figure 8.	W13 base natural stand yield curves (4 of 4). ....	34
Figure 9.	W13 base managed stand yield curves (1 of 4). ....	35
Figure 10.	W13 base managed stand yield curves (2 of 4). ....	36
Figure 11.	W13 base managed stand yield curves (3 of 4). ....	37
Figure 12.	W13 base managed stand yield curves (4 of 4). ....	38
Figure 13.	W13 pine site index increase managed stand yield curves. ....	39
Figure 14.	W13 composite Athabasca Flats post-treatment yield curve. ....	39
Figure 15.	W13 commercial thinning yield curves. ....	40
Figure 16.	W13 salvage thinning yield curves. ....	41
Figure 17.	Natural Oldgrowthness curves by BAP strata. ....	61
Figure 18.	Natural origin thinned Oldgrowthness curves by BAP strata. ....	61
Figure 19.	Managed Oldgrowthness curves by BAP strata. ....	62
Figure 20.	Forested RCs by age, slope and substrate used in the forecasting model for the 2007-2016 Millar Western DFMP. ....	67
Figure 21.	W11 Piece Size curves used in forecasting. ....	79
Figure 22.	W13 Piece size curves used in forecasting (1 of 2). ....	80
Figure 23.	W13 Piece size curves used in forecasting (2 of 2). ....	81
Figure 24.	Deciduous harvest goal and result from the W11 PFMS. ....	87
Figure 25.	Coniferous harvest goal and results from the W11 PFMS. ....	88
Figure 26.	Early wood harvest goal and results from the W11 PFMS. ....	88
Figure 27.	Deciduous operable growing stock goal and results from the W11 PFMS. ....	89
Figure 28.	Coniferous operable growing stock goal and results from the W11 PFMS. ....	89
Figure 29.	0-4 ha Patch size goal and results from the W11 PFMS. ....	90
Figure 30.	4-100 ha Patch size goal and results from the W11 PFMS. ....	90
Figure 31.	100-1000 ha Patch size goal and results from the W11 PFMS. ....	91
Figure 32.	1000+ ha Patch size goal and results from the W11 PFMS. ....	91
Figure 33.	Oldgrowthness area goal and results from the W11 PFMS. ....	92
Figure 34.	Oldgrowthness patch goal and results from the W11 PFMS. ....	92
Figure 35.	Coniferous harvest goal and results from the W13 PFMS. ....	93
Figure 36.	Deciduous harvest goal and result from the W13 PFMS. ....	94
Figure 37.	Weyerhaeuser deciduous harvest goal and results from the W13 PFMS. ....	94
Figure 38.	Post harvest stand conversion target from the W13 PFMS. ....	95
Figure 39.	0-4 ha Patch size goal and results from the W13 PFMS. ....	96
Figure 40.	4-100 ha Patch size goal and results from the W13 PFMS. ....	96
Figure 41.	100-1000 ha Patch size goal and results from the W13 PFMS. ....	96
Figure 42.	1000+ ha Patch size goal and results from the W13 PFMS. ....	97
Figure 43.	Weyerhaeuser patch size goal and results from the W13 PFMS. ....	97
Figure 44.	Oldgrowthness area goal and results from the W13 PFMS. ....	98
Figure 45.	Oldgrowthness area goal and result in the D cover group from the W13 PFMS. ....	98
Figure 46.	Oldgrowthness area goal and result in the DC cover group from the W13 PFMS. ....	98
Figure 47.	Oldgrowthness patch goal and results from the W13 PFMS. ....	99



Figure 48. Deciduous operable growing stock goal and results from the W13 PFMS..... 100

Figure 49. Coniferous operable growing stock goal and results from the W13 PFMS. .... 100

Figure 50. Mountain pine beetle susceptibility goal and results from the W13 PFMS. .... 101

Figure 51. AP mixedwood goal and results from the W13 PFMS. .... 101

Figure 52. AS mixedwood goal and results from the W13 PFMS. .... 102

Figure 53. PA mixedwood goal and results from the W13 PFMS. .... 102

Figure 54. SA mixedwood goal and results from the W13 PFMS. .... 102

Figure 55. Total harvest level from the W11 PFMS. .... 105

Figure 56. Early-wood harvest from the W11 PFMS..... 106

Figure 57. Coniferous harvest volume by species strata from the W11 PFMS..... 106

Figure 58. Deciduous harvest volume by species strata from the W11 PFMS..... 107

Figure 59. Area harvested and converted in the W11 PFMS. .... 108

Figure 60. Area harvested by species strata from the W11 PFMS. .... 109

Figure 61. Average harvest age from the W11 PFMS..... 111

Figure 62. Coniferous piece sizes from the W11 PFMS. .... 112

Figure 63. Deciduous piece sizes from the W11 PFMS. .... 113

Figure 64. Growing stock by type from the W11 PFMS..... 113

Figure 65. Area by ASRD MPB rank on the landbase from the W11 PFMS. .... 114

Figure 66. Area by species strata on the gross landbase from the W11 PFMS. .... 115

Figure 67. Area by species strata on the managed landbase from the W11 PFMS. .... 116

Figure 68. Area by age class on the managed landbase from the W11 PFMS. .... 116

Figure 69. Oldgrowthness area on the landbase from the W11 PFMS..... 117

Figure 70. Oldgrowthness area on the gross landbase from the W11 PFMS. .... 118

Figure 71. Oldgrowthness area on the managed landbase from the W11 PFMS. .... 118

Figure 72. Area of mature and old on the gross landbase from the W11 PFMS. .... 119

Figure 73. Area of mature and old on the managed landbase from the W11 PFMS. .... 119

Figure 74. Gross old area by species strata from the W11 PFMS. .... 120

Figure 75. Managed old area by species strata from the W11 PFMS. .... 120

Figure 76. Oldgrowthness patch size on the gross landbase from the W11 PFMS. .... 123

Figure 77. Opening patch sizes on the gross landbase from the W11 PFMS. .... 124

Figure 78. BAP species proportions on the gross landbase from the W11 PFMS. .... 125

Figure 79. BAP species proportions on the managed landbase from the W11 PFMS. .... 125

Figure 80. BAP DWD index on the landbase from the W11 PFMS. .... 126

Figure 81. BAP snag density on the gross landbase from the W11 PFMS. .... 127

Figure 82. BAP snag density on the managed landbase from the W11 PFMS. .... 127

Figure 83. BAP sapling density on the gross landbase from the W11 PFMS. .... 128

Figure 84. BAP sapling density on the managed landbase from the W11 PFMS. .... 128

Figure 85. BAP FMFS index on the gross landbase from the W11 PFMS. .... 129

Figure 86. BAP FMFS index on the managed landbase from the W11 PFMS. .... 129

Figure 87. Other BAP indicators on the gross landbase from the W11 PFMS. .... 130

Figure 88. Other BAP indicators on the managed landbase from the W11 PFMS. .... 130

Figure 89. Maximum percent increase in RC above baseline for all 3<sup>rd</sup> order watersheds in W11..... 131

Figure 90. Change in RC for W11 3<sup>rd</sup> order watersheds with at least 90% of their area within the DFA. 133

Figure 91. Percent increase in RC above baseline condition for W11 1<sup>st</sup> order watersheds with at least 50% of their area within the DFA. .... 134

Figure 92. Change in RC for 1<sup>st</sup> order watershed #1428. .... 135

Figure 93. Total harvest level from the W13 PFMS. .... 138

Figure 94. Coniferous Harvest Volume by Species Strata from the W13 PFMS..... 139

Figure 95. Deciduous harvest volume by species strata from the W13 PFMS..... 139

Figure 96. Birch volume harvested from each species strata from the W13 PFMS..... 140



Figure 97. Area harvested and converted in the W13 PFMS ..... 142

Figure 98. Area harvested by species strata from the W13 PFMS ..... 144

Figure 99. Average harvest age from the W13 PFMS..... 148

Figure 100. Coniferous harvest pieces size by species strata from the W13 PFMS. .... 149

Figure 101. Deciduous harvest pieces size by species strata from the W13 PFMS..... 150

Figure 102. Growing stock by type from the W13 PFMS ..... 151

Figure 103. Area by ASRD MPB Rank on the land base from the W13 PFMS ..... 152

Figure 104. Area by species strata on the gross landbase from the W13 PFMS..... 156

Figure 105. Area by species strata on the managed landbase from the W13 PFMS..... 156

Figure 106. Area by age class on the managed landbase from the W13 PFMS..... 157

Figure 107. Oldgrowthness area on the landbase from the W13 PFMS. .... 158

Figure 108. Oldgrowthness area on the gross landbase from the W13 PFMS..... 158

Figure 109. Oldgrowthness area on the managed landbase from the W13 PFMS..... 159

Figure 110. Area of mature and old on the gross landbase from the W13 PFMS..... 159

Figure 111. Area of mature and old on the managed landbase from the W13 PFMS..... 160

Figure 112. Gross old area by species strata from the W13 PFMS..... 161

Figure 113. Managed old area by species strata from the W13 PFMS. .... 161

Figure 114. Oldgrowthness patch size on the gross landbase from the W13 PFMS..... 162

Figure 115. Opening patch sizes on the gross landbase from the W13 PFMS ..... 162

Figure 116. BAP species proportions on the gross landbase from the W13 PFMS ..... 163

Figure 117. BAP species proportions on the managed landbase from the W13 PFMS ..... 164

Figure 118. BAP DWD index on the landbase from the W13 PFMS ..... 164

Figure 119. BAP Snag density on the gross landbase from the W13 PFMS ..... 165

Figure 120. BAP snag density on the managed landbase from the W13 PFMS ..... 166

Figure 121. BAP sapling density on the gross landbase from the W13 PFMS ..... 167

Figure 122. BAP sapling density on the managed landbase from the W13 PFMS ..... 167

Figure 123. BAP FMFS index on the gross landbase from the W13 PFMS..... 168

Figure 124. BAP FMFS index on the managed landbase from the W13 PFMS..... 168

Figure 125. Other BAP indicators on the gross landbase from the W13 PFMS ..... 169

Figure 126. Other BAP indicators on the managed landbase from the W13 PFMS ..... 169

Figure 127. RC increase (%) for all W13 3<sup>rd</sup> order watersheds. .... 170

Figure 128. Change in RCs for W13 3<sup>rd</sup> order watersheds with at least 90% of their area within the DFA. 172

Figure 129. Percent increase in RC above baseline condition for W13 1<sup>st</sup> order watersheds with at least 50% of their area within the DFA..... 173

Figure 130. Change in RC for 16 W13 1<sup>st</sup> order watersheds..... 175

Figure 131. Conifer harvest level by % Oldgrowthness. .... 199

Figure 132. Deciduous harvest level by % Oldgrowthness..... 200

Figure 133. Coniferous operable growing stock at the end of the planning horizon. .... 201

Figure 134. Deciduous operable growing stock at the end of the planning horizon. .... 201

Figure 135. Area by age class plotted by height and TPR of the merchantable PI stands in W13..... 209

Figure 136. Coniferous harvest level by scenario. .... 210

Figure 137. Deciduous harvest level by scenario..... 210

Figure 138. Area by height of the managed SB stands in W13 based on Age..... 213

Figure 139. Conifer harvest level by scenario..... 214

Figure 140. Deciduous harvest level by scenario..... 214

Figure 141. Coniferous operable growing stock at the end of the planning horizon. .... 215

Figure 142. Process used to select the subset of the SHS to delete..... 224





### List of Maps

Map 1.	W13 historical disposition map. ....	4
Map 2.	Gross landbase by deletion category.....	23
Map 3.	Managed landbase by species strata. ....	24
Map 4.	ASRD MPB compartment risk assignments.....	56
Map 5.	ASRD MPB Rankings on the DFA in 2007.....	57
Map 6.	Functional 1 <sup>st</sup> order watersheds. ....	65
Map 7.	Functional 3 <sup>rd</sup> order watersheds.....	66
Map 8.	Early wood sub compartments in W11. ....	69
Map 9.	W11 compartment sequence for 2007-2016. ....	71
Map 10.	W11 compartment sequence for 2017-2026. ....	72
Map 11.	W13 Compartment sequence for 2007 – 2016.....	73
Map 12.	W13 Compartment sequence for 2017 – 2026.....	74
Map 13.	Weyerhaeuser harvest prioritization zones.....	77
Map 14.	W11 SHS by decade from the PFMS.....	104
Map 15.	2007-2016 W11 SHS by species strata. ....	110
Map 16.	2017-2026 W11 SHS by species strata. ....	111
Map 17.	Old growth SW on the landbase in 2007 on the gross landbase from the PFMSs.	121
Map 18.	Old growth SW on the landbase in 2017 on the gross landbase from the PFMSs.	122
Map 19.	Old growth SW on the landbase in 2057 on the gross landbase from the PFMSs.	123
Map 20.	W13 SHS from the PFMS.....	136
Map 21.	Harvest treatments in the first decade from the W13 PFMS. ....	143
Map 22.	2007-2016 W13 SHS by species strata .....	145
Map 23.	2017-2026 W13 SHS by species strata .....	146
Map 24.	MPB compartment risk and the SHS for the DFA .....	153
Map 25.	SHS and MWFP high MPB SSI in 2007 .....	154
Map 26.	MWFP high MPB SSI in 2027 .....	155
Map 27.	First order watersheds at least 50% within DFA and a 50% increase in RC.	176

