



Introduction and Plan Development

2007 – 2017 Forest Management Plan for FMA 0200041

May 31, 2007

**Prepared by:
The Forestry Corp.**



2007 – 2017 FMP FOR FMA 0200041

Introduction and Plan Development forms one of 10 sections of the 2007 – 2017 Forest Management Plan for Manning Diversified Forest Products Ltd.'s Forest Management Agreement (FMA) 0200041. The Forest Management Plan (FMP) includes the following sections:

1. **Introduction and Plan Development** – Introduces the companies operating on the FMA and describes the FMP development process, including the public consultation process. Includes the FMP Standards Checklist.
 2. **FMA Area** – Describes the physical environment of the FMA Area.
 3. **FMA Resources** – Describes the natural resources within the FMA Area.
 4. **Values, Objectives, Indicators and Targets (VOITs)** – Details the values, objectives, indicators and targets that were instrumental in selecting the Preferred Forest Management Strategy and in developing forest management strategies for the FMP.
 5. **Forest Landscape Metrics** – Presents specific information regarding forest vegetation composition and natural disturbance within the FMA Area and/or northwestern Alberta to address VOIT requirements.
 6. **Landbase Netdown** – Provides a detailed description of the landbase netdown process, in preparation for the Timber Supply Analysis.
 7. **Yield Curves** – Documents the volume sampling and yield curve development process.
 8. **Timber Supply Analysis** – Describes how the Preferred Forest Management Strategy, which was selected to meet Values and Objectives, was incorporated into the Timber Supply Analysis and provides an Annual Allowable Cut for both the coniferous and deciduous landbases.
 9. **Implementation** – Describes the forest management strategies and operations that will be used to implement the FMP and help ensure that indicators and targets are met.
 10. **Monitoring and Research** – Describes monitoring commitments required to ensure indicators and targets are tracked and describes Manning Diversified's approach to supporting research.
-



Table of Contents

1. INTRODUCTION..... 1

2. MANNING DIVERSIFIED FOREST PRODUCTS LTD..... 5

 2.1 CORPORATE HISTORY AND MISSION STATEMENT 5

 2.2 FACILITIES 6

 2.2.1 Sawmill..... 6

 2.2.2 Planer/Moulder Mill..... 6

 2.2.3 Remanufacturing Plant 6

 2.2.4 Whole Tree Chipper..... 7

 2.2.5 Planer/Moulder Shavings Bagger..... 7

 2.3 EMPLOYMENT 7

3. DAISHOWA-MARUBENI INTERNATIONAL LTD. 9

4. PLAN DEVELOPMENT..... 11

 4.1 PLANNING TEAMS 11

 4.2 PUBLIC CONSULTATION 13

List of Appendices

Appendix I FMA Agreement

Appendix II FMP Submission Checklist

Appendix III MDFP Public Consultation Plan

Appendix IV FMP Aboriginal Consultation Requirement

Appendix V Public Consultation Plan Update

List of Tables

Table 4-1. Planning team membership. 12

Table 4-2. Role of consultants in FMP development..... 13

List of Figures

Figure 1-1. Manning Diversified Forest Products Ltd. Forest Management Agreement Area comprising of Forest Management Units P6 and P9 (note that FMUs P6 and P9 are officially designated as P16). 3



1. Introduction

In February 12, 2002, the Government of the Province of Alberta signed Order in Council 28/2002 which awarded Manning Diversified Forest Products Ltd. with the right to

'enter upon the forest management area to establish, grow, harvest and remove coniferous timber on the forest management area on a perpetual sustained yield basis'

within Forest Management Units P6 and P9, which are currently referred to as FMU P16. FMA 0200041 (Appendix I), which came into effect on March 12, 2002, outlines the rights and responsibilities of Manning Diversified over the Forest Management Agreement Area (see Figure 1-1) for the term of the Agreement (20 years, expiring March 11, 2022). The FMA specifically requires submission of the following management planning documents:

- Preliminary Forest Management Plan within one year of commencement of the FMA (i.e., by March 12, 2003)
- First Forest Management Plan within five years of commencement of the FMA (i.e., by March 12, 2007)
- Second Forest Management Plan within 15 years of commencement of the FMA (i.e., by March 12, 2017)

In March 2003 Manning Diversified submitted a Preliminary Forest Management Plan (PFMP) which outlined the Terms of Reference for development of the FMA's first Forest Management Plan (FMP). The PFMP set an Annual Allowable Cut, based on a timber supply analysis conducted by Alberta Sustainable Resource Development (ASRD) using Phase 3 inventory, of:

- 196,897 m³/year of primary coniferous volume, and
- 14,404 m³/year of incidental coniferous volume (20 year average un-even flow)

The PFMP also contained a Public Consultation Plan which identified the role of public stakeholders in the development of the 2007 FMP.



The 2007 Forest Management Plan (FMP) submission meets the obligations set for Manning Diversified under their FMA, replacing the 2003 Preliminary Forest Management Plan. The FMP is applicable for the FMA Area (i.e., Defined Forest Area for the Plan is the FMA Area). It will be in effect for 10 years, from 2007 to 2017 at which time it will be replaced. In general terms, the FMP sets out the forest management strategies that Manning Diversified, the FMA holder, and Daishowa-Marubeni International, the embedded quota holder, will follow and the activities that relate to those strategies. It includes the determination of a sustainable harvest level, which is evaluated over a period equivalent to 200 years.

The FMP was prepared according to Alberta's Forest Management Planning Standards, version 4.1. The associated submission checklist is included as Appendix II.

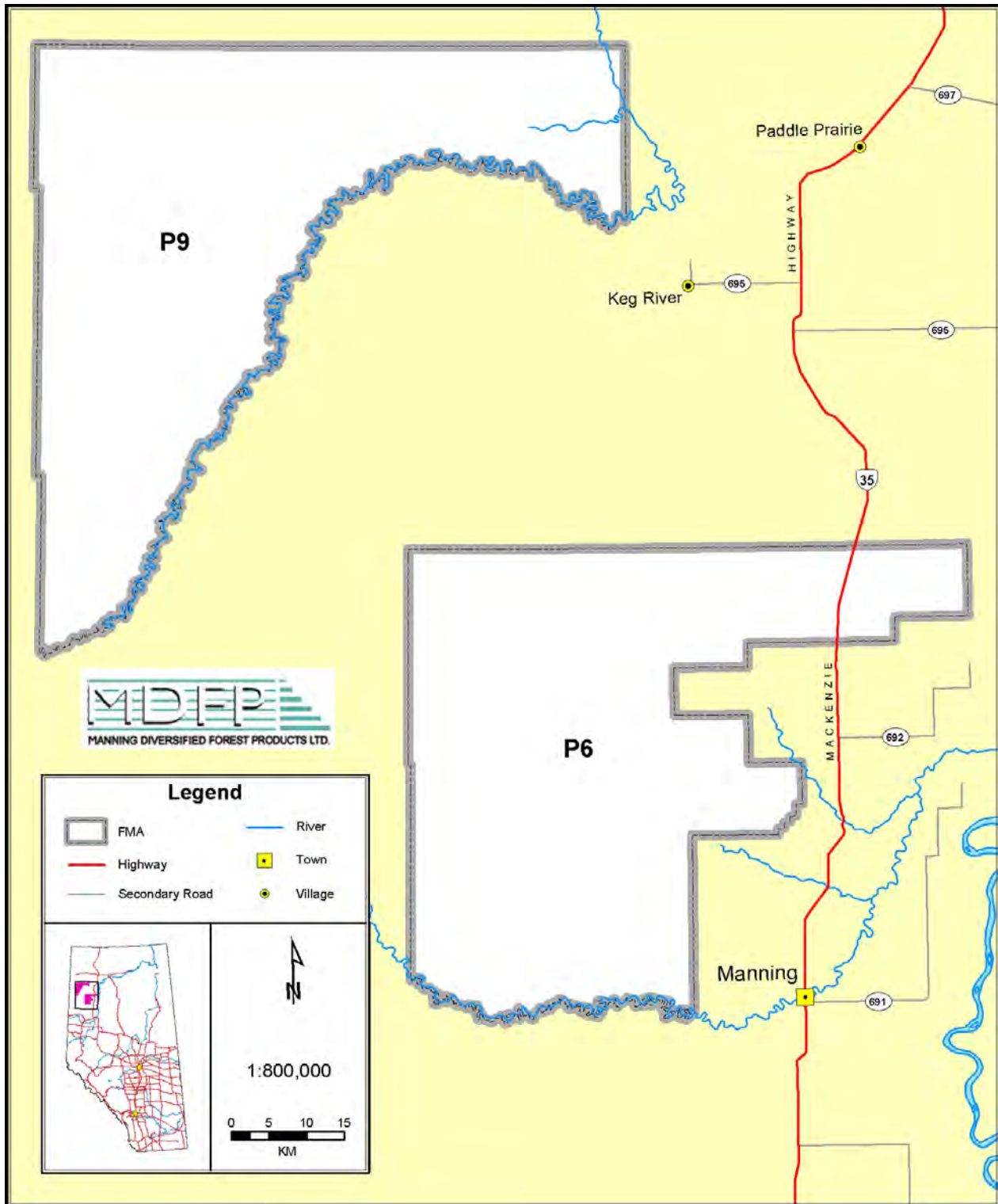


Figure 1-1. Manning Diversified Forest Products Ltd. Forest Management Agreement Area comprising of Forest Management Units P6 and P9 (note that FMUs P6 and P9 are officially designated as P16).



2. Manning Diversified Forest Products Ltd.

Manning Diversified Forest Products Ltd., as the holder of FMA 0200041, is responsible for development of the FMP. The Company has the right to establish, grow, harvest and remove coniferous timber on the FMA Area.

2.1 Corporate History and Mission Statement

Manning Diversified received its first coniferous timber quota from the Province in November 1992. The Company was initially founded by nine partners, most of whom had strong ties to the Manning area. Their vision was to build a value-added wood processing facility near Manning to utilize the available timber resources and provide maximum economic and social benefits to the Manning region. In keeping with this vision, the Company has developed their facilities to include sawmill, planning and secondary remanufacturing facilities, all located at a single site, northwest of the town of Manning.

Manning Diversified is an export-oriented company, with much of its output designated for Japanese and U. S. markets. The domestic market is also important to Manning Diversified. The Company supplies both end users and secondary manufacturers.

The Company's mission statement reads:

'The goal of Manning Diversified Forest Products Ltd. is to produce top quality, diversified forest products in a safe work environment for all, while maintaining high productivity. This will be done with care for the environment and wise use of natural resources. By combining our talents and energy, we can achieve these goals.'

Entering into a Forest Management Agreement with the Province and operating under an approved FMP are key components in fulfilling the Company's mission statement.

2.2 Facilities

2.2.1 Sawmill

The sawmill, the first facility to be constructed by Manning Diversified Forest Products Ltd. (MDFP), was completed by December 1993. The facility is located 24 km north of the town of Manning. The sawmill produces kiln-dried sawn wood, the majority of which is designated for further processing.

The sawmill currently produces roughly ninety million board feet per year using two primary breakdown lines. The facility runs two shifts per day, five days per week, with each shift generally responsible for a single line. The green lumber coming into the sawmill is dried in one of three dry kilns, two of which are run on sawmill waste. The third kiln is run on natural gas.

Logs arrive at the sawmill facility in tree length form for processing. The mill itself contains a cut-off saw, a de-barker, two primary breakdown lines, a trimsaw/sorting system and a chipper. Chipping waste from the de-barking process is designated for transfer to regional pulp mills. The two primary breakdown lines are size dependant, with larger logs going to one line and smaller logs going to the other. Maintaining two separate breakdown lines ensures MDFP is able to use the full range of log sizes which grow within their FMA Area.

2.2.2 Planer/Moulder Mill

The planer/moulder mill started operations in September of 1994. This is a single line mill which utilizes a moulder, rather than the usual planer, to process incoming, rough lumber. The moulder allows Manning Diversified to produce higher value items such as tongue and groove, rougher headed fascia and rounded siding as well as producing commodity lumber that has a smoother finish. The planer/moulder mill configuration assists the Company in maximizing the economic value associated with its wood supply. It also provides the flexibility needed to provide a wide range of products for additional processing in the remanufacturing plant.

The planer/moulder mill processes the throughput from the sawmill. This volume is normally accommodated running one shift per day with occasional extra shifts. Additions to the planer/moulder mill since 1994 include expansion of the building and new automated grading and sorting equipment.

2.2.3 Remanufacturing Plant

The remanufacturing plant began operations in 1997. This plant is located in a separate facility on the sawmill site. The plant processes roughly ten percent of the output from the planing/moulder mill, or roughly 9 million board feet.

The plant allows Manning Diversified to modify the planer/moulder throughput in many ways. The lumber can be split, chopped using precision end trimming, primed or painted, re-bundled, etc. The remanufacturing plant is designed to accommodate customer demands quickly and efficiently. Both the



volume of throughput and the product profile are constantly changing to reflect the diverse demands of the Company's customers (unlike production of commodity lumber).

Maintaining a remanufacturing plant on-site helps maximize the economic value of the Company's wood supply. Although only 10% of the sawmill output is remanufactured, significant employment and economic value is generated.

2.2.4 Whole Tree Chipper

In 1999, Manning Diversified built a whole log chipper at the sawmill site, to process tree-length deciduous logs. The deciduous logs represented the incidental harvest from the Company's conifer harvesting operations and were chipped under contract with Daishowa-Marubeni International (DMI) in Peace River. The chipper was utilized until 2003/04, processing roughly 150,000 m³ of deciduous logs per year. In 2004/05 DMI converted all their operations to in-bush chipping and did not renew its contract with MDFP. The chipper remains on-site but was not active at the time of FMP submission.

2.2.5 Planer/Moulder Shavings Bagger

In 2003, a shavings bagger was installed at the Manning mill site as a cooperative effort with another company. Since the bagger began operations, roughly 2000 bags of shavings per day have been produced. The shavings are used primarily as bedding material for horses and are generally sold into the U.S. market.

2.3 Employment

Manning Diversified employs approximately one hundred and ten full time employees on-site. This figure includes office staff, mill workers and a woodlands staff of eight. There are also approximately one hundred full and part-time contract positions which include year-round operations such as sales, shipping and trucking or in seasonal operations such as harvesting, log haul or reforestation (primarily site preparation and tree planting). The seasonal contractors are usually farmers who are involved in the winter harvesting operations, and students in the summer reforestation activities.



3. Daishowa-Marubeni International Ltd.

Daishowa-Marubeni International Ltd. (DMI), Peace River Pulp Division, holds a Deciduous Timber Allocation Certificate (DTA No. DTAP160001) in FMU P16 (P6 and P9). The Certificate is a volume based tenure that entitles DMI to the right to an Annual Allowable Cut of 172,541 m³ of deciduous timber. DMI is responsible for regeneration of areas it harvests under authority of its quota certificate.

The certificate's AAC of 172,541 m³ was based on a timber supply analysis conducted by ASRD using Phase 3 inventory. The certificate volume was comprised of:

- 129,849 m³/year of primary deciduous volume, and
- 42,692 m³/year of incidental deciduous volume (20 year average un-even flow).

DMI's processing facility is located 16 km north of the town of Peace River. The mill employs 350 people and produces 480,000 air-dried metric tonnes of kraft pulp. Typically, one quarter of the total production is softwood pulp and three quarter is hardwood pulp.

The pulp mill pioneered the production of hardwood pulp in northwestern Alberta. It is designed to minimize the impact on the environment and utilizes previously uneconomical hardwood timber and residual softwood chips purchased from sawmills in the area.



4. Plan Development

Development of the Forest Management Plan (FMP) was initiated by Manning Diversified in March of 2003 with the submission of the FMA's Preliminary Forest Management Plan and Terms of Reference for development of the FMA's first Forest Management Plan. The Preliminary Forest Management Plan also contained a Public Consultation Plan (PCP) which identified the role of public stakeholders in the development of the 2007 FMP (see Appendix III). Inclusion of Aboriginal consultation within the PCP was considered by MDFP. However, because there was no expressed interest by First Nation communities regarding FMUs P6 and P9, the Province indicated there was no current need for Aboriginal consultation (Appendix IV).

The Forest Management Plan submission meets the obligations set for Manning Diversified under their FMA, replacing the 2003 Preliminary Forest Management Plan. It will be in effect for 10 years, from 2007 to 2017 at which time it will be replaced.

The FMP was developed using the direction provided by Alberta Sustainable Resource Development's (ASRD) Forest Management Planning Standard, which underwent numerous revisions during the FMP development process. Version 4.1 of the Planning Standard, dated April 2006, was used as the basis of FMP submission.

The following section identifies the planning team members and describes their roles in the FMP development and summarizes the public involvement process associated with the development of the Plan.

4.1 Planning Teams

The planning team responsible for development of this FMP was comprised of the representatives identified in Table 4-1.

Table 4-1. Planning team membership.

Table 1-1. Planning team membership			
Organization	Position	Member Name	Role
MDFP	Woodlands Manager	Steve Blanton (J. P. Bielich)	Core Team, Timber Supply Team and Modeling Team
MDFP	Silviculture Forester	Andy Shandro	Core Team, Timber Supply Team and Modeling Team
DMI	Team Leader, Planning	Tim Barker	Core Team, Timber Supply Team and Modeling Team
DMI	Advisor, Planning and Reforestation	Gordon Whitmore	Core Team, Timber Supply Team and Modeling Team
ASRD	Planning Forester, Forest Planning Section	Vicky Bosse (Brad Epp)	Core Team, Timber Supply Team and Modeling Team
ASRD	Forester, Peace Area	Cal Dakin (Kari White) (Al Benson)	Core Team, Timber Supply Team and Modeling Team
ASRD	Wildlife Biologist, Fish and Wildlife, Peace Area	Dave Moyles	Core Team, Timber Supply Team and Modeling Team
ASRD	Senior Analyst, Resource Analysis Section	Karl Peck	Core Team, Timber Supply Team
ASRD	Growth and Yield Forester, Forest Biometrics Unit	Darren Aitkin	Timber Supply Team
ASRD	Senior Forester, Harvesting and Renewal Section	Marty O'Byrne	Core Team
ASRD	Forest Protection Technician, Peace Fire Management Office	Bob Mazurik	Core Team
ASRD	Fisheries Technician, Fish and Wildlife, Peace Area	Jim Rosin	Core Team
Alberta Environment	Water Technologist, Water Management, Peace River	Terry Sawchuk	Core Team

Manning Diversified utilized the services of several consultants to assist with the FMP development. The role of these consultants in the FMP development process is summarized in Table 4-2.

**Table 4-2. Role of consultants in FMP development.**

Company	Consultant	Role
The Forestry Corp.	Olenka Bakowsky	Preparation of the FMP document
The Forestry Corp.	Ted Gooding	Timber supply analysis
The Forestry Corp.	Bob Christian	Timber supply analysis
The Forestry Corp.	Willi Fast	Development of yield curves
The Forestry Corp.	Katrina Froese	Growth and Yield Program
Watertight Solutions Ltd.	Dr. Richard Rothwell	Hydrologic modeling of proposed harvest
Greenlink Forestry Inc.		Alberta Vegetation Inventory for P6 and P9
Geographic Dynamics Corp.		Development of ecosections and review of glacial history for P6
Altamira Consulting Ltd.		Historic Resource Management Plan for P6

The initial meeting of the Core and Timber Management Planning Teams was held in June 2003. These teams continued to meet at regular intervals throughout the plan development process. The Modeling Team held its initial meeting in November 2005. All interim plan submissions/components were vetted by the Core Planning Team. These interim submissions/components include the following:

- Values, objectives, indicators and targets
- Yield curves (agreement-in-principal)
- Landbase netdown (agreement-in-principal)
- Structural retention strategy
- Green-up strategy
- Caribou strategy
- Reforestation/silviculture strategy
- Access corridor development plan
- Coarse woody debris monitoring
- Watershed assessment.

4.2 Public Consultation

Manning Diversified prepared a Public Consultation Plan for FMA 0200041 which identified the role of public stakeholders in the forest management process, including the development of the FMP. Key components of the Consultation Plan included:

- A list of relevant stakeholders.
- Commitment to meet with stakeholders during FMP development process to meet unique stakeholder interests.
- Commitment to meet with stakeholders to discuss draft/final FMP.
- Commitment to meet with stakeholders to discuss development of Operating Groundrules.



- Commitment to meet with stakeholders on an on-going basis (annually) to discuss plan implementation and performance (along with General Development Plan and Annual Operating Plan).

A detailed list of meetings with public stakeholders held during FMP development (prior to submission of the FMP) is provided in the Public Consultation Plan Update: FMP Development in Appendix V.



Appendix I FMA Agreement



Appendix II FMP Submission Checklist



Appendix III MDFP Public Consultation Plan



Appendix IV FMP Aboriginal Consultation Requirement



Forestry Division

Box 749
Manning, Alberta
T0H 2M0Telephone: (780) 836-2881
Fax: (780) 836-3666DFMP Aboriginal
Consultation

February 20, 2007

Mr. Steve Blanton
Manning Diversified Forest Products Ltd.
Box 370
Manning, Alberta
T0H 2M0

Dear Mr. Blanton

RE: DFMP ABORIGINAL CONSULTATION

This letter is in response to the MDFP request for documentation regarding requirement for First Nations Consultation process within the MDFP Detailed Forest Management Plan (DFMP). Based on the Government of Alberta's First Nations Consultation Guidelines on Land Management and Resource Development, the Forest Industry has been delegated the responsibility of consultation on specific timber harvesting project components. In particular, the forest industry is required to consult with First Nations regarding both the DFMP and the GDP (General Development Plan). To date, there has been no expressed interest by First Nations communities regarding FMU (Forest Management Unit) P16. Given that FMU P16 is the DFA (Defined Forest Area) for the MDFP DFMP, there has not been an identified need for First Nations consultation during the development of the MDFP DFMP to date.

MDFP should be aware that policy regarding First Nations Consultation is evolving and as more information is being garnered from First Nations Communities through their Traditional Use Studies (TUS). In the event that new information is provided to SRD of MDFP that would indicate a need for First Nations consultation, MDFP will be required to develop a consultation plan at that time.

Should you have any questions or concerns regarding this letter, please contact the undersigned at (780) 836-5719.

Sincerely

A handwritten signature in black ink, appearing to read 'Cal Dakin', with a long horizontal flourish extending to the right.

Cal Dakin, RPF
Senior Area Forester
Peace Area

cc: Colin Needham: Resource Management Administrator, Peace/Upper Hay Area
Vicky Bosse: Forest Management Planner, Forest Management Branch



Appendix V Public Consultation Plan Update



FMA 0200041

PUBLIC CONSULTATION UPDATE: FMP DEVELOPMENT

BACKGROUND

Public consultation is a requirement of the Alberta Forest Planning Manual. MDFP has been preparing a Forest Management Plan (FMP) since it acquired a Forest Management Agreement in 2002. This FMP included a Public Consultation Process as a part of the planning process. This update is to provide a synopsis of the events throughout the FMP development process and leading up to the submission of the FMP.

The Public Consultation Plan was first submitted on March 12, 2003. After some discussion with Sustainable Resource Development a modified version was approved on July 22, 2004.

HISTORY

The approved PCP listed the known affected stakeholders. There was a Notice placed in eight local and regional newspapers stating that we were in the process of developing a forest management plan for the FMA and for people to contact us if they had any issues and concerns. There was no response to this advertisement. MDFP contacted all of the identified stakeholders to see if they were interested in being a part of the process, and to what extent.

Many of those identified stakeholders wanted to be kept informed only of the items that would impact them. This included all of the oil, gas and pipeline companies in the area. This was also the case for the Department of Fisheries and Oceans.

Other stakeholders wanted to be more involved. These were:

- Manning Town Council
- Clear Hills County Council
- MD 22, Northern Lights, Council
- Manning and Area Board of Trade
- Paddle Prairie Métis Settlement Council
- Manning Local Trappers Association
- Daishowa Marubeni International Ltd., Peace River Pulp Division.

The first meetings with the stakeholders were to gauge the support for the proposed consultation strategy. The proposed strategy was a little different than most other consultation processes for FMA holders with Alberta in that MDFP offered to go to the stakeholders rather than expect the stakeholders to come to meetings dedicated to the forest management plan. The stakeholders were quite supportive of this proposal because it did not add significantly to their workload and provided an opportunity for the whole stakeholder group to be involved. Copies of the Power Point presentations that were shown to these groups are on file at MDFP.

The next meetings set up with these groups were more specifically on the development of the FMP. The initial meetings covered two main topics for their input. The first item was on the Values, Indicators, Objectives and Targets, as per the Alberta Forest Planning Manual. The second was to ask if there were any other items in relation to the land base, such as unidentified historical resources, trails, unique areas of ecological or anthropogenic importance, and if there were any other stakeholders not listed. Copies of these Power Point presentations are on file at MDFP.

The last meetings were held in the spring of 2007, to discuss the various runs and the Preferred Forest Management Strategy (PFMS). A power point presentation was prepared, outlining the VOITS as well as the various strategies and plans as well as the PFMS.

ISSUES

MDFP had pre-identified several issues and the stakeholders included a few more potential forest management issues. These issues, the issues brought to our attention by the stakeholders, the responses provided and the associated action items were documented. They listed in the table at the end of this document.

MEETINGS

A list of the formal meeting with the stakeholders is as follows:

Town of Manning
November 28, 2002
June 25, 2003
February 11, 2004
December 8, 2004
Nov. 23, 2005
May 9, 2007

MD21
January 21, 2003
June 17, 2003
January 20, 2004
December 14, 2004
November 22, 2005
May 22, 2007

MD22
November 26, 2002
June 10, 2003
February 10, 2004
December ?, 2004
November 22, 2005
May 8, 2007

Paddle Prairie
October 30, 2002
June 9, 2003
August 18, 2003, Open Community Meeting
February 2, 2004
November 29, 2004
November 2005

Trappers Association
November 20, 2002
March 3, 2004
March 31, 2005
April 26, 2006
April 12, 2007

Manning and District Board of Trade
September 3, 2003
February 4, 2004
December 7, 2005
N/A – Has been Disbanded

Others
MDFP Mill staff: January 19, 2004



Public meetings: September 24, 2002 & January 22, 2003 and May 3, 2007
Joint meeting of stakeholders: September 24, 2003
Newspaper article: December 4, 2002
Twin Lakes Lodge owners: November 21, 2005

All meetings with the Town, County, MD 22, Paddle Prairie, Trappers and Board of Trade were with the entire council, unless specified. The public meetings were advertised in the Manning Banner Post which is circulated widely throughout the area, but there was very little response.

DMI

DMI, Peace River Pulp Division occupies a unique position as a stakeholder. They are a stakeholder but are also a quota holder within the FMA. As a quota holder, Peace River Pulp representatives were an important part of the planning team for the FMP and there were many meetings between the two companies as well as with the FMP planning groups.

NATIVE CONSULTATION

MDFP addressed both First Nations and Métis consultation.

FIRST NATIONS CONSULTATION

MDFP is quite unique in Northern Alberta in that there are no native communities in the near vicinity of the FMA Area. The nearest communities are the Dene to the north and the Duncan Band to the south. The Peace River seems to form a boundary to the east where the eastern bands did not cross over to this side to any great extent. MDFP had a Historical Resource Management Plan completed some years ago that confirmed this. At the start of this planning process, Ken McCrea from Sustainable Resource Development was contacted to determine which bands the Company should consult with. His reply was that Paddle Prairie Métis Settlement were the most affected and that there was no need seek consultation with the other groups.

METIS CONSULTATION

Paddle Prairie Métis Settlement is a part owner of MDFP. They sit on the Board of Directors and are therefore privy to all of MDFP's affairs. The Company includes Paddle Prairie in its stakeholder consultation process (see MEETINGS for a listing of meetings held with Paddle Prairie council and with the general community. Their concerns are listed with the others on the issues spreadsheet.

SUMMARY

The initial plan for public consultation worked quite well, although the frequency of meetings was less than planned. The discussions between the Province and MDFP on the new planning manual, the VOIT's and the process, led to confusion as to what to present to the stakeholders. As well, progress on the issues of land base and yield curve development and approval took longer than planned. The council's have busy agenda's and I did not want to meet with them if there was nothing to report, nor input to gather.

This process was different from most public involvement in that we did not form a public advisory committee. We decided to go to the stakeholders rather than have the stakeholders come to us. This approach was successful in that Manning Diversified had the opportunity to present information to, and receive input from a larger audience, mainly of influential individuals in their respective communities. The councils seemed to like this format, as they got to ask a lot of other questions about MDFP at the same time. The down side of this process was that the council's were often too busy to spend much time dealing with the issues.

The next steps in the consultation process will be to present the annual and five year Stewardship Reports to the stakeholders as well as the usual General Development Plan and Annual Operating Plan presentations.



PUBLIC PARTICIPATION PROGRAM LISTING OF FOREST PLANNING ISSUES (AS OF MAY31/07)						
STAKEHOLDER	ISSUE	DATE	RESPONSE	ACTION ITEMS	COMPLETED	COMMENTS
BROUGHT UP BY MDFP PRIOR TO START OF PUBLIC PROCESS	1. Caribou habitat in P9 and a little in P6	N/A	N/A	1. Work with Chin. Range Planning team 2. Incorporate above in Mgt. Plan 3. Support Provincial Caribou Committee 4. Do habitat supply analysis as part of the Mgt. Plan	No Yes No Yes	Team to start up soon See DMFP Financial support no longer sought See DMFP
	2. Cumulative impacts, O&G especially	N/A	N/A	1. Work with any higher level planning exercises 2. Incorporate into the Mgt. Plan in some way	N/A Yes	None going on in our region now VOIT table incorporates this
	3. Ecological impacts of P6/P9 age class dist. and associated harvesting	N/A	N/A	1. Support research into ecosystem dynamics 2. Incorporate spatial sequencing and its impact on age class distribution by area in Mgt. Plan	Yes Yes	Research fund SHS meets that ecological targets
	4. Status of reforestation on historical cutovers from prior to MDFP	N/A	N/A	1. Inventory the status of the cutovers as they are now and incorporate into the Mgt. Plan on appropriate yield curves, or plan for treatment	Yes	These blocks were surveyed and included in the overall inventory
	5. Mixed wood in P6 is ubiquitous. Mgt. planning will have to take into account	N/A	N/A	1. Continue to explore options for operations with PRPD 2. Support WESBOGY and any mixedwood growth and yield initiatives 3. Do an understory enhancement for AVI	Ongoing Ongoing Complete	D/u (a) discussions Yes to WESBOGY
TOWN OF MANNING	1. Concerned about Mountain Pine Beetle	5/9/2007	5/9/2007	1. Incorporated MPB Strategy into TSA	Yes	
	2. Recommends no buffer along Highway 35	5/9/2007	5/9/2007	1. Incorporated buffers along Highway 35	Yes	See opposite comment from MD #22
CLEAR HILLS COUNTY	1. Scarification sometimes has too much site disturbance	21/01/2003	23/01/2003	1. Discussion at the meeting to describe what scarification is and how we now do a lesser type 2. Letter offered to have a tour or other method to this to anyone who wanted to come	Yes	Our reply letter asks if we should follow up This method has worked when a similar issue was had by trappers M.D. #21 did not reply
	2. Addition of groundwater and aquifers to the Values and objectives presentation	22/01/2004	Verbal	1. Add an objective on groundwater and aquifers	Yes	Core/Water team felt that while the issue is important, there is too little known to set targets
	3. Questions regarding the use of Chinchaga Forestry Road	5/22/2007	5/22/2007	1. MDFP uses the Chinchaga Forestry Road	Yes	
	4. Questions regarding potential use of Clear Hills Connector Road	5/22/2007	5/22/2007	1. No plans to use this road	Yes	
	5. Concerned about Mountain Pine Beetle	5/22/2007	5/22/2007	1. Incorporated MPB Strategy in TSA	Yes	



PUBLIC PARTICIPATION PROGRAM LISTING OF FOREST PLANNING ISSUES (AS OF MAY31/07)						
STAKEHOLDER	ISSUE	DATE	RESPONSE	ACTION ITEMS	COMPLETED	COMMENTS
M.D. #22	1. Effort to minimize hunting from woodlot access	29/11/2002	23/12/2002	1. Deal with as an access mgt. issue under cummulat. effects and F&W Concerns. Report back	Yes	Through VOIT's as best we could
	2. Reforestation to keep mixedwoods mixed	10/6/2003	12/6/2003	1. Refer to planning group to ensure that strategies maintain mixedwoods over time	Ongoing	Bring forward to ARS Discussion
	3. Reforestation to allow mixedwoods to remain in mixed situations	10/6/2003	12/6/2003	1. Referred to planning team for their information	Ongoing	Same as above
	4. Concerned about Mountain Pine Beetle	5/8/2007	5/8/2007	1. Incorporated MPB Stragey in TSA	Yes	
	5. Concerned about aesthetics along Highway 35	5/8/2007	5/8/2007	1. Incorporated buffers along Highway 35	Yes	
PADDLE PRAIRIE	1. Traditional knowledge is something that we should tie in to	28/10/2002	31/10/2002	1. MDFP to contact Alden prior to the public meeting to discuss how best to achieve this. MDFP will need a go between 2. MDFP will try to gather some of this information and use it in their management plan	No No	Alden moved on and no one else seemed interested Were not able to get this going
	2. The best method of getting public input from Paddle was determined to be a public meeting	28/10/2002	31/10/2002	1. MDFP to set up a public meeting in the spring	Yes	Public meeting was held but no input provided
	3. The wood buffalo may be a species of concern in P9	28/10/2002	31/10/2002	1. MDFP to follow up as to whether this is so and get back to council	Yes	Buffalo area further north, F&W confirmed
	4. Buffers on trappers cabins	9/6/2003	10/6/2003	1. Refer to the forest management planning team	No	For ground rules discussion
	5. Buffers on mineral licks	9/6/2003	10/6/2003	1. Refer to the forest management planning team terms of the feasibility study	NO	For ground rules discussion
TRAPPERS	1. Support for the M.D. #21 comment on some scarification having too large of a site impact	24/03/2003	25/03/2003	1. Same comments as for M.D. #21	Yes	Possibility for a field trip. No one took up the offer
	2. There was a question about buffers on rivers	24/03/2003	25/03/2003	1. We mentioned that we are using the Alberta Timber harvesting and Operating Ground Rules for now. We will be developing our own and buffers would be a part of those ground rules	Yes	Ensure that ground rules have buffers as per our Provincial OGR's
	3. There was a question about improving access in P9	24/03/2003	25/03/2003	1. We talked about the fact that we are a winter harvesting company and that there was not much mature wood in P9 therefore we would not be imprving access for a long time	Yes	
	4. Requested an increase in Brush Pile burning rate	4/12/2007	4/12/2007	N/A	N/A	Not in scope of DFMP



The Forestry Corp. Project Number: P445
For additional information, please contact:
The Forestry Corp.
101-11710 Kingsway Avenue
Edmonton, AB
T5G 0X5
(780) 452-5878
www.forcorp.com

\\Silver\projects\P445_MDFP_DFMP\DFMP document\doc sections\chapters 1_2 Intro and FMA
Area\chapter_1_Intro_Plan_Devel_2007.05.26.doc
