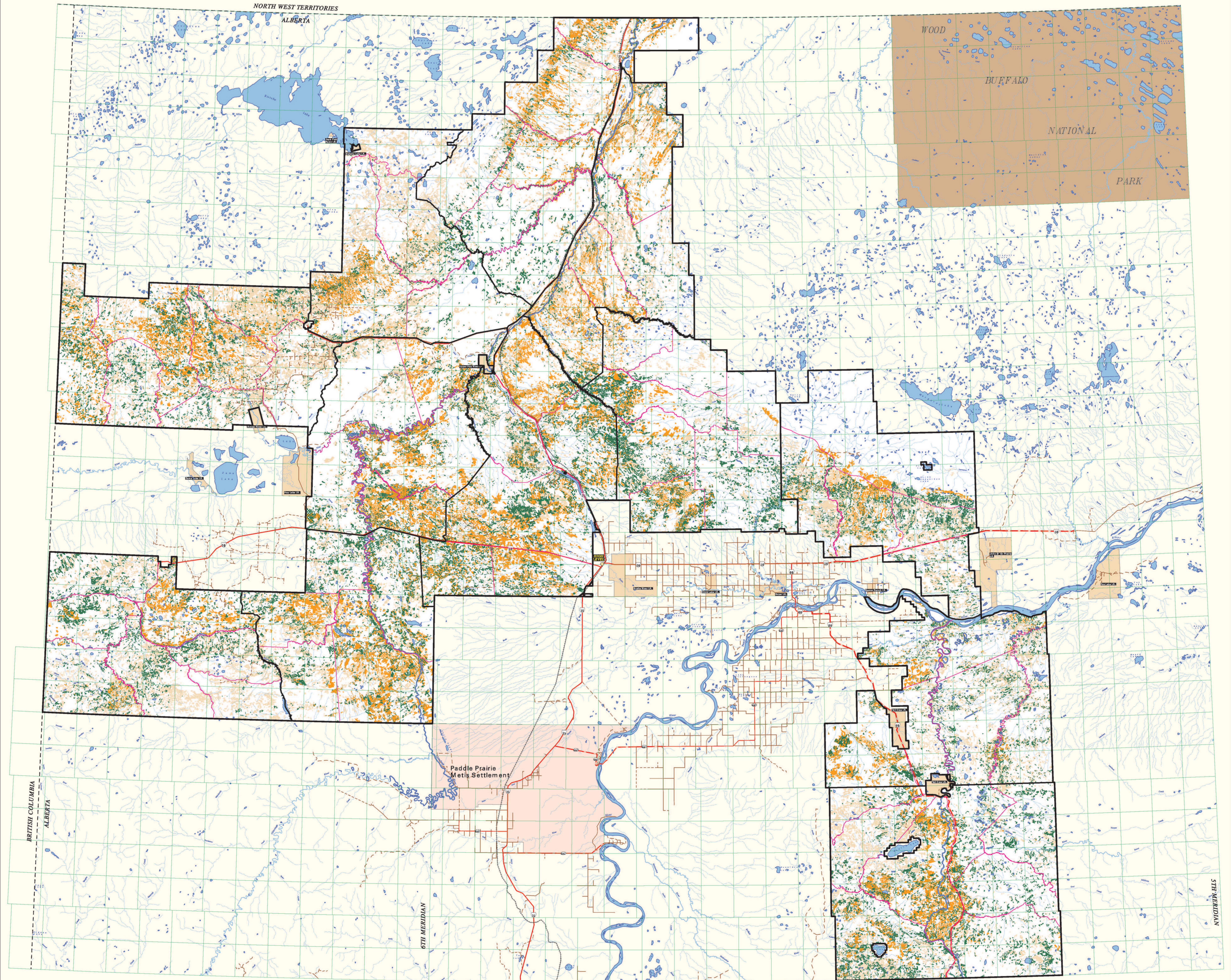


Rge 12 Rge 11 Rge 10 Rge 9 Rge 8 Rge 7 Rge 6 Rge 5 Rge 4 Rge 3 Rge 2 Rge 1 Rge 23 Rge 22 Rge 21 Rge 20 Rge 19 Rge 18 Rge 17 Rge 16 Rge 15 Rge 14 Rge 13 Rge 12 Rge 11 Rge 10 Rge 9 Rge 8 Rge 7 Rge 6 Rge 5 Rge 4 Rge 3 Rge 2 Rge 1



Rge 13 Rge 12 Rge 11 Rge 10 Rge 9 Rge 8 Rge 7 Rge 6 Rge 5 Rge 4 Rge 3 Rge 2 Rge 1 Rge 25 Rge 24 Rge 23 Rge 22 Rge 21 Rge 20 Rge 19 Rge 18 Rge 17 Rge 16 Rge 15 Rge 14 Rge 13 Rge 12 Rge 11 Rge 10 Rge 9 Rge 8 Rge 7 Rge 6 Rge 5 Rge 4 Rge 3 Rge 2 Rge 1

**PROVINCIAL INDEX**

**OLD FOREST MANAGEMENT UNITS**

**OPERATING AREA INDEX**

**PLANIMETRIC LEGEND**

- Divided Primary Highway
- Paved Primary Highway
- Gravel Primary Road
- Paved Secondary Road
- Gravel Secondary Road
- Improved Road
- Unimproved Road
- Railway
- Truck Trail

**MOOSE HABITAT CRITERIA**

- Sb/P Habitat
- Sw Habitat
- Foraging

**HABITAT CRITERIA**

- Canopy Closure B, C, or D Density
- Sw, Sb, Pj, Pl Leading Species
- Tree Height > 10 metres

Or

- Deciduous Overstorey with an Understorey meeting same specifications

Or

- Mixedwood Stands with C or D Density > 10 metres tall

**FORAGING CRITERIA**

- Cutblocks < 20 years