

Alberta-Pacific FMU L1

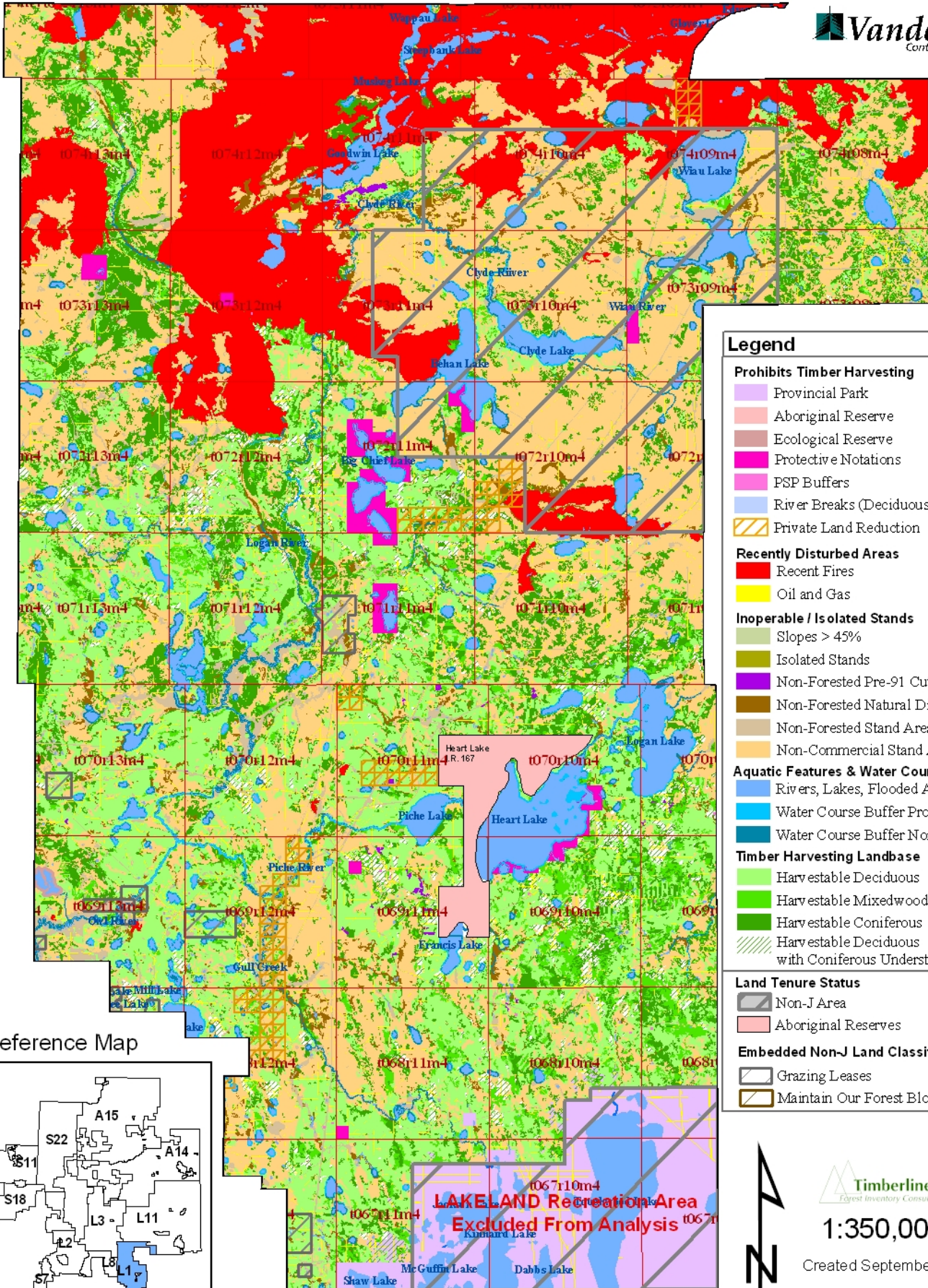
Netdown Classification



ALBERTA-PACIFIC
FOREST INDUSTRIES INC.



Vanderwell
Contractors (1971) Ltd.



Legend

Prohibits Timber Harvesting

- Provincial Park
- Aboriginal Reserve
- Ecological Reserve
- Protective Notations
- PSP Buffers
- River Breaks (Deciduous Only)
- Private Land Reduction

Recently Disturbed Areas

- Recent Fires
- Oil and Gas

Inoperable / Isolated Stands

- Slopes > 45%
- Isolated Stands
- Non-Forested Pre-91 Cutblocks
- Non-Forested Natural Disturbance Areas
- Non-Forested Stand Area
- Non-Commercial Stand Area

Aquatic Features & Water Course Buffers

- Rivers, Lakes, Flooded Areas
- Water Course Buffer Productive
- Water Course Buffer Non-Productive

Timber Harvesting Landbase

- Harvestable Deciduous
- Harvestable Mixedwood
- Harvestable Coniferous
- Harvestable Deciduous with Coniferous Understory

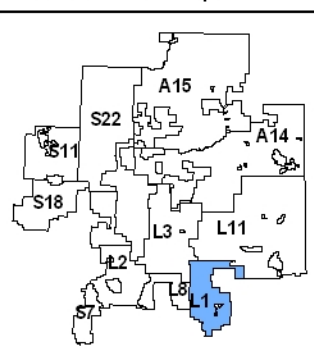
Land Tenure Status

- Non-J Area
- Aboriginal Reserves

Embedded Non-J Land Classification

- Grazing Leases
- Maintain Our Forest Blocks

Reference Map



LAKE LAND Recreation Area
Excluded From Analysis



Timberline
Forest Inventory Consultants

1:350,000

Created September 2007

Alberta-Pacific FMA Area Landbase Summary Table

FMU L1



Forest Management Unit L1

Netdown Category	FMA Area(ha)	Non-FMA Area(ha)	Total Area(ha)	Landbase (%)
Prohibits/Precludes Timber Harvesting				
Provincial Park	1,103.7	0.0	1,103.7	0.3%
Aboriginal Reserve	0.0	0.0	0.0	0.0%
Ecological Reserve	145.9	0.0	145.9	0.0%
Protected Notations (No Harvesting Permitted)	2,495.8	379.8	2,875.5	0.9%
PSP Buffers	89.7	0.0	89.7	0.0%
River Breaks	0.0	0.0	0.0	0.0%
Private Land	518.3	0.0	518.3	0.2%
<i>Sub-total</i>	4,353.5	379.8	4,733.2	1.4%
Recently Disturbed Areas				
Fire	45,425.7	5,654.6	51,080.3	15.3%
Oil and Gas	6,217.8	937.2	7,155.0	2.1%
<i>Sub-total</i>	51,643.5	6,591.9	58,235.3	17.4%
Inoperable / Isolated Stands				
Slope	0.4	0.0	0.4	0.0%
Isolated Harvestable stands	125.2	18.8	144.0	0.0%
Non-Forested (CC)	322.0	0.0	322.0	0.1%
Non-Forested Natural Disturbance	5,367.7	1,545.4	6,913.0	2.1%
Non-Forested Vegetated	7,351.8	1,241.3	8,593.1	2.6%
Anthropogenic Vegetated	1,735.1	468.5	2,203.6	0.7%
Anthropogenic Non-Vegetated	1,239.2	223.4	1,462.6	0.4%
Naturally Non-Vegetated	0.5	0.0	0.5	0.0%
Non-Commercial TPR	14,649.8	7,798.8	22,448.7	6.7%
Non-Commercial Species	30,832.4	13,187.3	44,019.7	13.2%
Non-Commercial Stand Density	1,847.4	415.2	2,262.7	0.7%
Non-Commercial Site Index	21,764.8	8,402.0	30,166.8	9.0%
Horizontal Stand Adjustment	3.8	0.0	3.8	0.0%
<i>Sub-total</i>	85,240.1	33,300.7	118,540.8	35.5%
Water Course Buffers				
Buffer	7,844.9	2,200.1	10,045.1	3.0%
<i>Sub-total</i>	7,844.9	2,200.1	10,045.1	3.0%
Aquatic Features				
Rivers	267.6	38.3	305.9	0.1%
Lakes	13,590.5	5,173.5	18,763.9	5.6%
Flooded Areas	742.1	21.2	763.4	0.2%
<i>Sub-total</i>	14,600.2	5,233.0	19,833.2	5.9%
Timber Harvesting Landbase				
Deciduous	67,618.6	2,704.8	70,323.4	21.1%
Deciduous / Coniferous	5,444.3	497.7	5,942.0	1.8%
Coniferous / Deciduous	5,573.1	225.6	5,798.7	1.7%
Coniferous	36,354.6	4,000.6	40,355.2	12.1%
<i>Sub-total</i>	114,990.6	7,428.7	122,419.3	36.7%
Grand Total	278,672.7	55,134.1	333,806.8	100.0%