

# Alberta-Pacific FMU L11

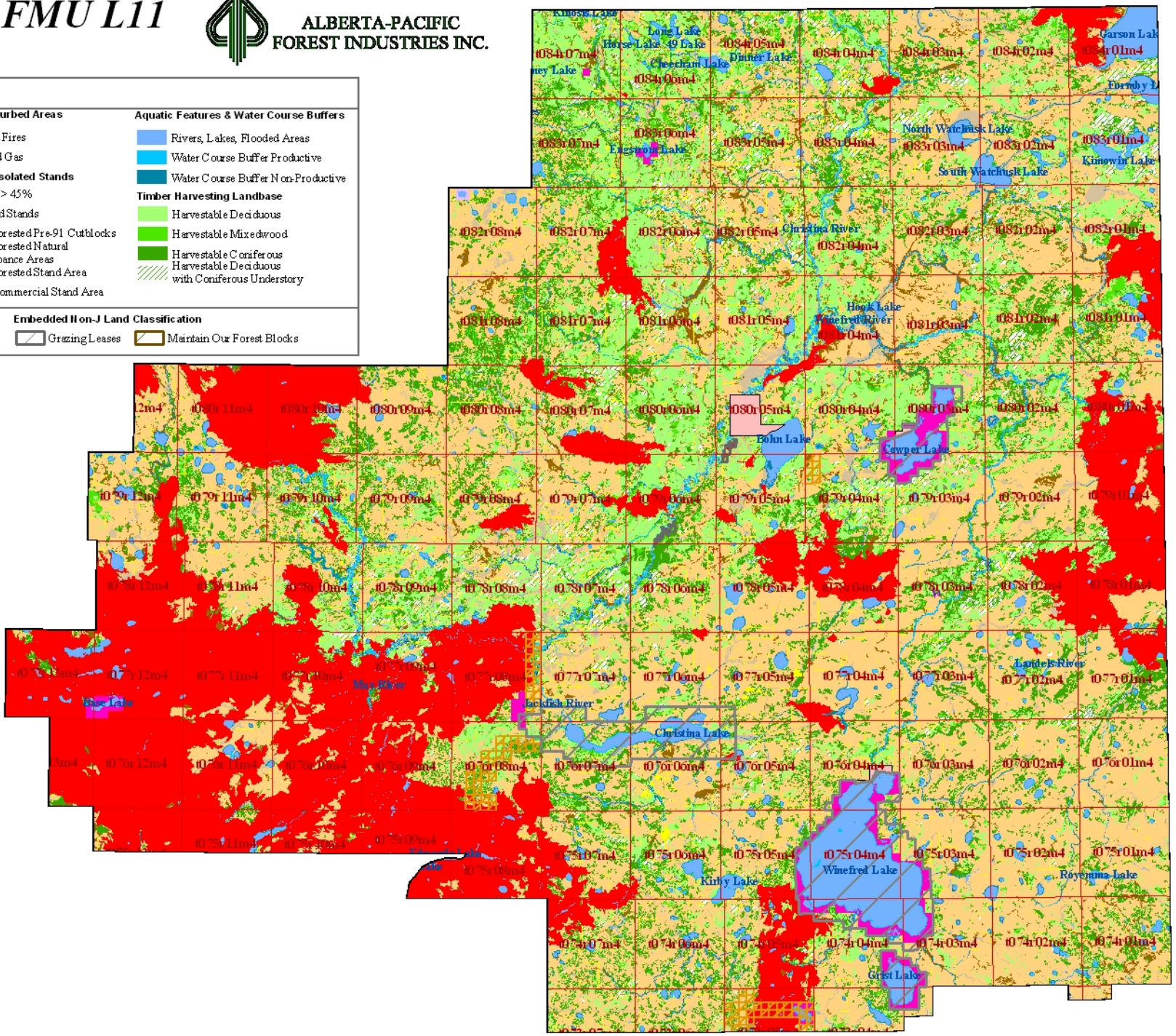
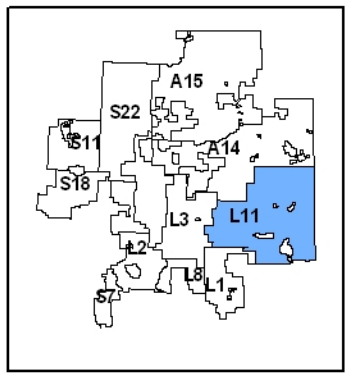
## Netdown Classification



ALBERTA-PACIFIC  
FOREST INDUSTRIES INC.

Legend		
<b>Prohibits Timber Harvesting</b>	<b>Recently Disturbed Areas</b>	<b>Aquatic Features &amp; Water Course Buffers</b>
<ul style="list-style-type: none"> <li>Provincial Park</li> <li>Aboriginal Reserve</li> <li>Ecological Reserve</li> <li>Protective Notations</li> <li>FSP Buffers</li> <li>River Breaks</li> <li>(Deciduous Only)</li> <li>Private Land Reduction</li> </ul>	<ul style="list-style-type: none"> <li>Recent Fires</li> <li>Oil and Gas</li> </ul> <b>Inoperable / Isolated Stands</b> <ul style="list-style-type: none"> <li>Slopes &gt; 45%</li> <li>Isolated Stands</li> <li>Non-Forsted Pre-91 Cutblocks</li> <li>Non-Forsted Natural Disturbance Areas</li> <li>Non-Forsted Stand Area</li> <li>Non-C Commercial Stand Area</li> </ul>	<ul style="list-style-type: none"> <li>Rivers, Lakes, Flooded Areas</li> <li>Water Course Buffer Productive</li> <li>Water Course Buffer Non-Productive</li> </ul> <b>Timber Harvesting Landbase</b> <ul style="list-style-type: none"> <li>Harvestable Deciduous</li> <li>Harvestable Mixedwood</li> <li>Harvestable Coniferous</li> <li>Harvestable Deciduous with Coniferous Understory</li> </ul>
<b>Land Tenure Status</b>	<b>Embedded Non-J Land Classification</b>	
<ul style="list-style-type: none"> <li>Non-J Area</li> <li>Aboriginal Reserves</li> </ul>	<ul style="list-style-type: none"> <li>Grazing Leases</li> <li>Maintain Our Forest Blocks</li> </ul>	

### Reference Map



# Alberta-Pacific FMA Area Landbase Summary Table

## FMU L11



### Forest Management Unit L11

Netdown Category	FMA Area(ha)	Non-FMA Area(ha)	Total Area(ha)	Landbase (%)
<b>Prohibits/Precludes Timber Harvesting</b>				
Provincial Park	165.0	0.0	165.0	0.0%
Aboriginal Reserve	0.0	1,946.8	1,946.8	0.2%
Ecological Reserve	0.0	0.0	0.0	0.0%
Protected Notations (No Harvesting Permitted)	1,684.1	6,950.6	8,634.7	0.8%
PSP Buffers	169.8	0.0	169.8	0.0%
River Breaks	0.0	0.0	0.0	0.0%
Private Land	610.0	0.0	610.0	0.1%
<i>Sub-total</i>	<b>2,628.9</b>	<b>8,897.4</b>	<b>11,526.3</b>	<b>1.1%</b>
<b>Recently Disturbed Areas</b>				
Fire	202,659.8	182.7	202,842.6	19.4%
Oil and Gas	18,539.5	225.7	18,765.2	1.8%
<i>Sub-total</i>	<b>221,199.3</b>	<b>408.5</b>	<b>221,607.8</b>	<b>21.2%</b>
<b>Inoperable / Isolated Stands</b>				
Slope	0.0	0.0	0.0	0.0%
Isolated Harvestable stands	523.8	8.2	532.0	0.1%
Non-Forested (CC)	34.3	0.0	34.3	0.0%
Non-Forested Natural Disturbance	23,334.3	335.3	23,669.5	2.3%
Non-Forested Vegetated	27,982.4	408.9	28,391.3	2.7%
Anthropogenic Vegetated	2,951.7	99.6	3,051.2	0.3%
Anthropogenic Non-Vegetated	2,314.9	158.1	2,473.0	0.2%
Naturally Non-Vegetated	12.2	0.0	12.2	0.0%
Non-Commercial TPR	95,081.7	726.3	95,808.0	9.1%
Non-Commercial Species	107,433.0	1,953.1	109,386.1	10.4%
Non-Commercial Stand Density	13,055.9	147.1	13,202.9	1.3%
Non-Commercial Site Index	179,666.2	2,672.2	182,338.4	17.4%
Horizontal Stand Adjustment	62.9	3.5	66.4	0.0%
<i>Sub-total</i>	<b>452,453.3</b>	<b>6,512.2</b>	<b>458,965.5</b>	<b>43.8%</b>
<b>Water Course Buffers</b>				
Buffer	22,417.1	1,879.5	24,296.6	2.3%
<i>Sub-total</i>	<b>22,417.1</b>	<b>1,879.5</b>	<b>24,296.6</b>	<b>2.3%</b>
<b>Aquatic Features</b>				
Rivers	1,820.5	30.8	1,851.4	0.2%
Lakes	23,113.0	17,877.7	40,990.7	3.9%
Flooded Areas	2,665.1	52.2	2,717.3	0.3%
<i>Sub-total</i>	<b>27,598.6</b>	<b>17,960.7</b>	<b>45,559.4</b>	<b>4.3%</b>
<b>Timber Harvesting Landbase</b>				
Deciduous	149,055.1	2,290.5	151,345.6	14.4%
Deciduous / Coniferous	11,266.3	166.2	11,432.5	1.1%
Coniferous / Deciduous	8,893.5	172.2	9,065.7	0.9%
Coniferous	112,074.0	1,811.7	113,885.7	10.9%
<i>Sub-total</i>	<b>281,288.9</b>	<b>4,440.6</b>	<b>285,729.5</b>	<b>27.3%</b>
<b>Grand Total</b>	<b>1,007,586.1</b>	<b>40,098.9</b>	<b>1,047,685.0</b>	<b>100.0%</b>