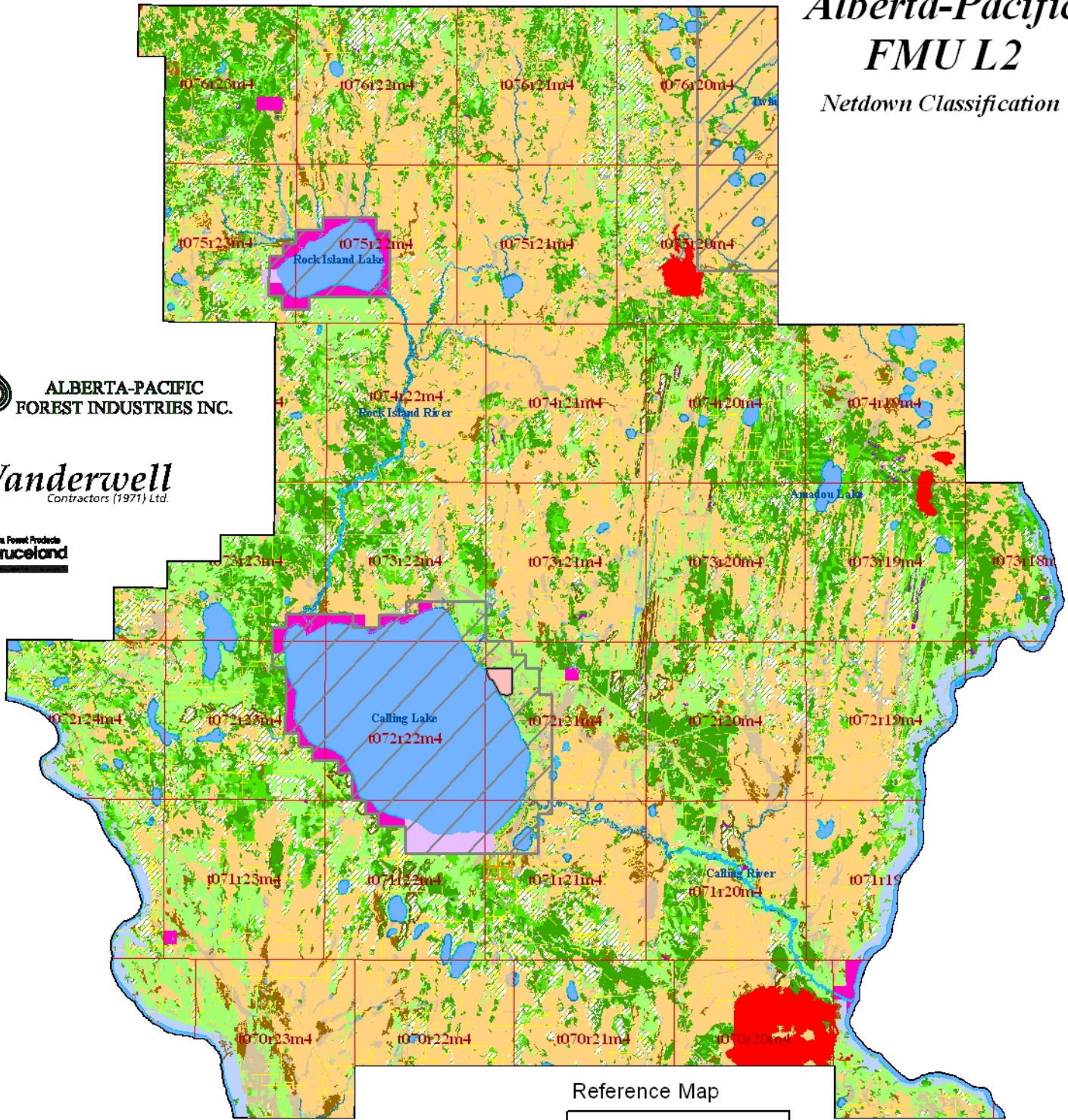


Alberta-Pacific FMU L2 Netdown Classification

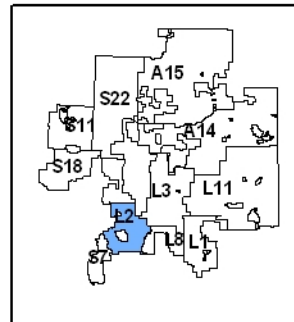


ALBERTA-PACIFIC
FOREST INDUSTRIES INC.

Vanderwell
Contractors (1971) Ltd.



Reference Map



Legend

Prohibits Timber Harvesting	Recently Disturbed Areas	Aquatic Features & Water Course Buffers
Provincial Park	Recent Fires	Rivers, Lakes, Flooded Areas
Aboriginal Reserve	Oil and Gas	Water Course Buffer Productive
Ecological Reserve	Inoperable / Isolated Stands	Water Course Buffer Non-Productive
Protective Notations	Slopes > 45%	Timber Harvesting Landbase
PSP Buffers	Isolated Stands	Harvestable Deciduous
River Breaks (Deciduous Only)	Non-For ested Pre-91 Cutblocks	Harvestable Mixedwood
Private Land Reduction	Non-For ested Natural Disturbance Areas	Harvestable Coniferous
	Non-For ested Stand Area	Harvestable Deciduous with Coniferous Understory
	Non-Commercial Stand Area	

Land Tenure Status

Non-J Area Aboriginal Reserves

Embedded Non-J Land Classification

Grazing Leases Maintain Our Forest Blocks



1:350,000

Created September 2007

Alberta-Pacific FMA Area Landbase Summary Table

FMU L2



Forest Management Unit L2

Netdown Category	FMA Area(ha)	Non-FMA Area(ha)	Total Area(ha)	Landbase (%)
Prohibits/Precludes Timber Harvesting				
Provincial Park	34.6	800.3	834.9	0.3%
Aboriginal Reserve	0.0	198.4	198.4	0.1%
Ecological Reserve	0.0	0.0	0.0	0.0%
Protected Notations (No Harvesting Permitted)	526.1	2,338.6	2,864.7	1.0%
PSP Buffers	48.3	32.2	80.5	0.0%
River Breaks	3,836.2	24.5	3,860.7	1.3%
Private Land	25.7	0.0	25.7	0.0%
<i>Sub-total</i>	4,471.0	3,393.9	7,864.9	2.6%
Recently Disturbed Areas				
Fire	3,407.6	164.3	3,571.8	1.2%
Oil and Gas	8,065.2	561.6	8,626.7	2.9%
<i>Sub-total</i>	11,472.7	725.8	12,198.6	4.1%
Inoperable / Isolated Stands				
Slope	0.0	0.0	0.0	0.0%
Isolated Harvestable stands	125.9	19.8	145.7	0.0%
Non-Forested (CC)	196.3	76.7	273.0	0.1%
Non-Forested Natural Disturbance	5,316.0	233.3	5,549.2	1.8%
Non-Forested Vegetated	12,554.5	605.7	13,160.1	4.4%
Anthropogenic Vegetated	846.3	159.3	1,005.6	0.3%
Anthropogenic Non-Vegetated	1,145.0	352.8	1,497.8	0.5%
Naturally Non-Vegetated	32.4	6.0	38.4	0.0%
Non-Commercial TPR	16,091.4	575.8	16,667.2	5.5%
Non-Commercial Species	39,825.2	4,550.0	44,375.2	14.8%
Non-Commercial Stand Density	1,182.7	89.4	1,272.1	0.4%
Non-Commercial Site Index	44,949.4	1,898.1	46,847.5	15.6%
Horizontal Stand Adjustment	18.6	0.0	18.6	0.0%
<i>Sub-total</i>	122,283.6	8,566.9	130,850.5	43.5%
Water Course Buffers				
Buffer	3,779.7	784.1	4,563.8	1.5%
<i>Sub-total</i>	3,779.7	784.1	4,563.8	1.5%
Aquatic Features				
Rivers	2,307.8	10.6	2,318.5	0.8%
Lakes	2,842.6	16,130.6	18,973.3	6.3%
Flooded Areas	795.9	27.3	823.2	0.3%
<i>Sub-total</i>	5,946.4	16,168.6	22,115.0	7.4%
Timber Harvesting Landbase				
Deciduous	61,344.4	4,033.7	65,378.0	21.8%
Deciduous / Coniferous	6,462.2	160.9	6,623.0	2.2%
Coniferous / Deciduous	8,457.1	309.7	8,766.8	2.9%
Coniferous	35,527.9	6,659.9	42,187.8	14.0%
<i>Sub-total</i>	111,791.6	11,164.1	122,955.7	40.9%
Grand Total	259,745.0	40,803.4	300,548.4	100.0%