

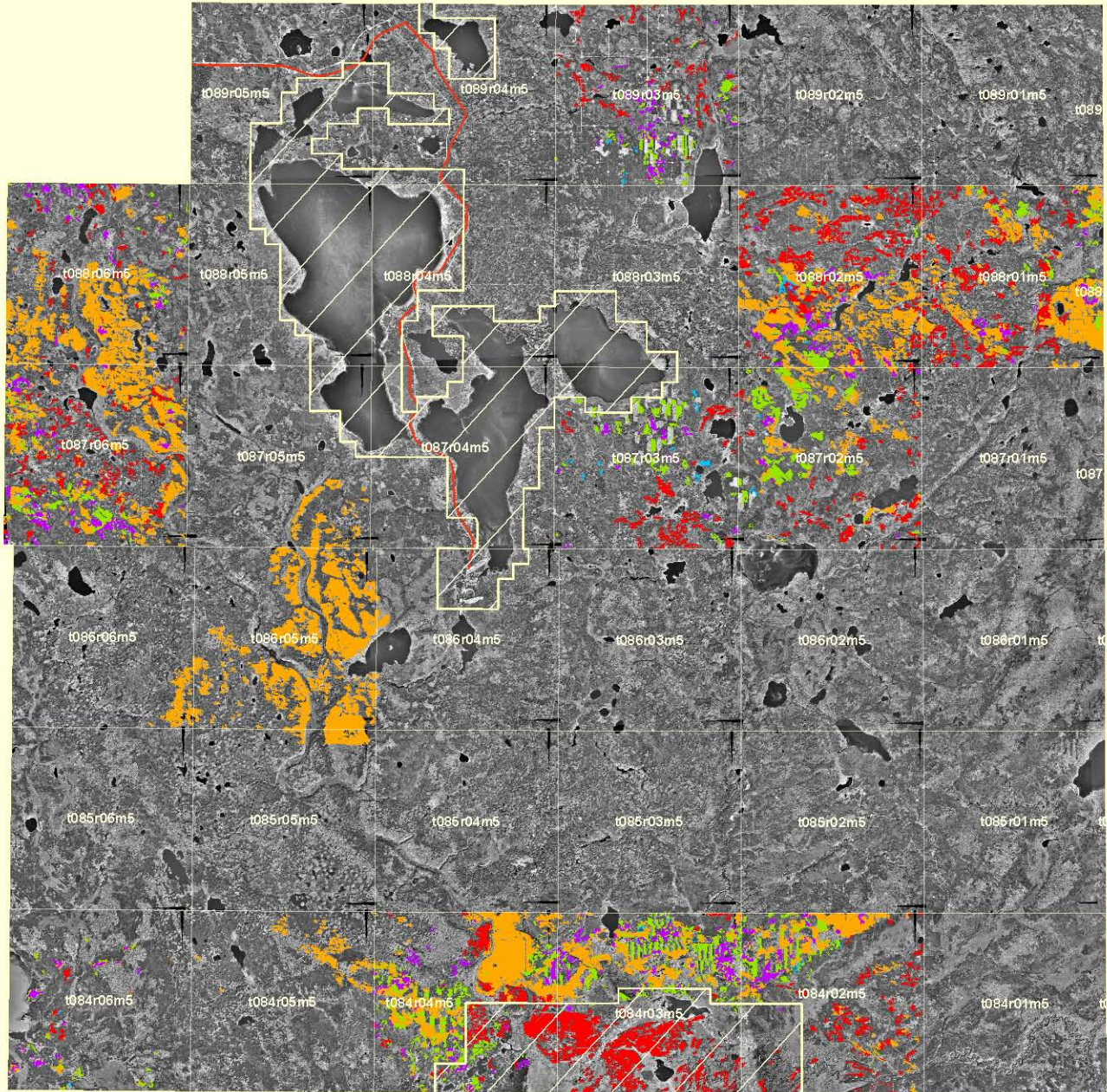
S11 Spatial Harvest Sequence (SHS)

15 Year Schedule (2006 - 2021)



Gross Landbase Area:	332,548 Ha
Net Landbase Area:	151,507 Ha
Primary Deciduous AAC:	142,029 m³
Primary Coniferous AAC*:	90,251 m³
Cover Group - Sw:	38,012 m³
Cover Group - Sb:	1,948 m³
Cover Group - Pj:	50,291 m³

* Includes DC volume where managed as conifer landbase.
DC/CD stands broken into Sw/Sb/Pj strata groups.



- Deciduous SHS
- Coniferous-Sw SHS
- Deciduous/Coniferous SHS
- Coniferous-Sb SHS
- Coniferous-Pj SHS

