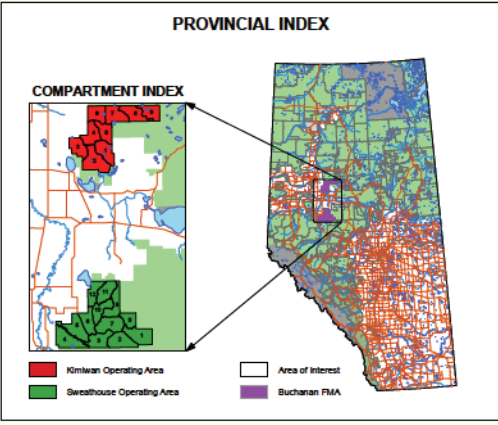


BUCHANAN LUMBER
HIGH PRAIRIE, ALTA.

**20 YEAR HARVEST SEQUENCE:
2002 PFMS**



FEATURES OF INTEREST

STANDS SCHEDULED FOR HARVEST

Forest Management Strategy - DFMP PFMS

- Years 1 - 10
- Years 11 - 20

PLANIMETRIC LEGEND

FMA Boundary	Paved Primary
Compartment	Paved Secondary
Township	Improved Roads
Lake / River	Unimproved Roads
Reserve / Settlement	Truck Trail
Provincial Park	Existing Temporary
Town	Rail
	Irrigation Canal
	Streams Major
	Streams Minor

0 4 8 16
Kilometres

© BELVADEH LTD. 2002
COPYRIGHT © 2002 BUCHANAN LUMBER, TOLKO
OSB AND OSB LUMBER
DISTRIBUTION OF THIS DOCUMENT IS PROHIBITED
THIS MAP HAS BEEN CREATED USING AVAILABLE INFORMATION AND MAY NOT ACCURATELY
REPRESENT THE LOCATION, DEFINITION OR DISTRIBUTION OF LAND BASE FEATURES.

Map Version 1.00
Original Map Scale: 1:25,000
Map Production by Sitcom Ltd.
Map Date: October 20, 2002
Sitcom Ref: N-521
Map File: _mapinfo_document_map
2002_08pfms.mxd