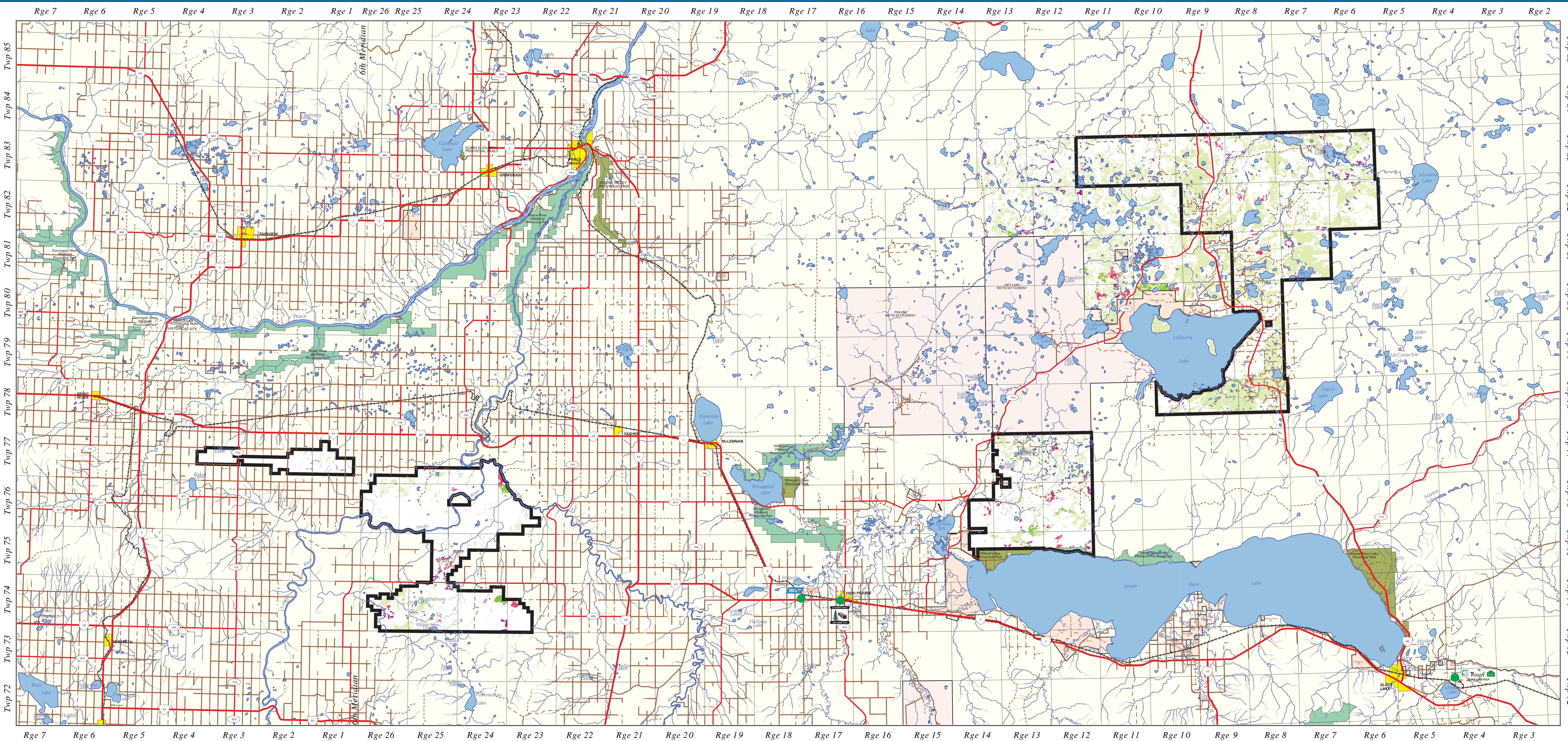
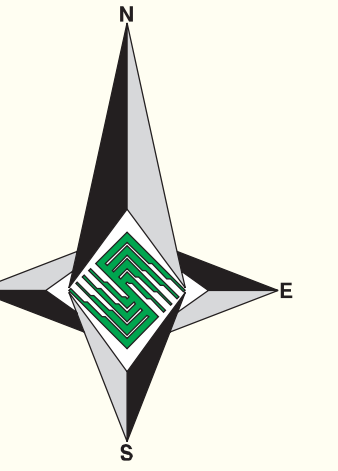


# HIGH QUALITY LATE SERAL STAGE STANDS IDENTIFIED FOR RETENTION

## OPERATING AREA: FMA



### OPERATING AREA

- Compartment Boundary
- Operating Area Name
- Compartment Number

**BIRCH**  
**WHITEMUD**  
**SALT**  
**UTIKUMA**

### PROVINCIAL INDEX

### PLANIMETRIC LEGEND

	PRIMARY HIGHWAY		LAKE/RIVER
	DIVIDED PAVED GRAVEL		CITY/TOWN
	SECONDARY ROAD PAVED GRAVEL		PROVINCIAL PARK
	IMPROVED ROAD UNIMPROVED ROAD		WILDLAND PROVINCIAL PARK
	TRUCK TRAIL		SETTLEMENTS
	RAILWAY		FIRST NATIONS RESERVES
	RUNWAY		MILL SITE
	TOWNSHIP LINE		
	FMA BOUNDARY		
	STREAM		

### FEATURES OF INTEREST

OPERABLE STANDS IDENTIFIED FOR LATE SERAL STAGE RETENTION

- First Selection - Approximately Years 0-79 of Planning Horizon
- Second Selection - Approximately Years 80-159 of Planning Horizon
- Third Selection - Approximately Years 160+ of Planning Horizon
- Non-Operable Forested Stands Identified for Late Seral Stage Retention

Data is our core business™

0 5 10 15 20 25  
KILOMETRES

Map Version 1.00  
 Map Date: January 20, 2005  
 Original Map Scale: 1:250000  
 PMS File: retention\_stands.mxd  
 Map Production: Silvacom Ltd.  
 Silvacom Reference: 1001  
 Map File: J:\010\retention\_map.pml