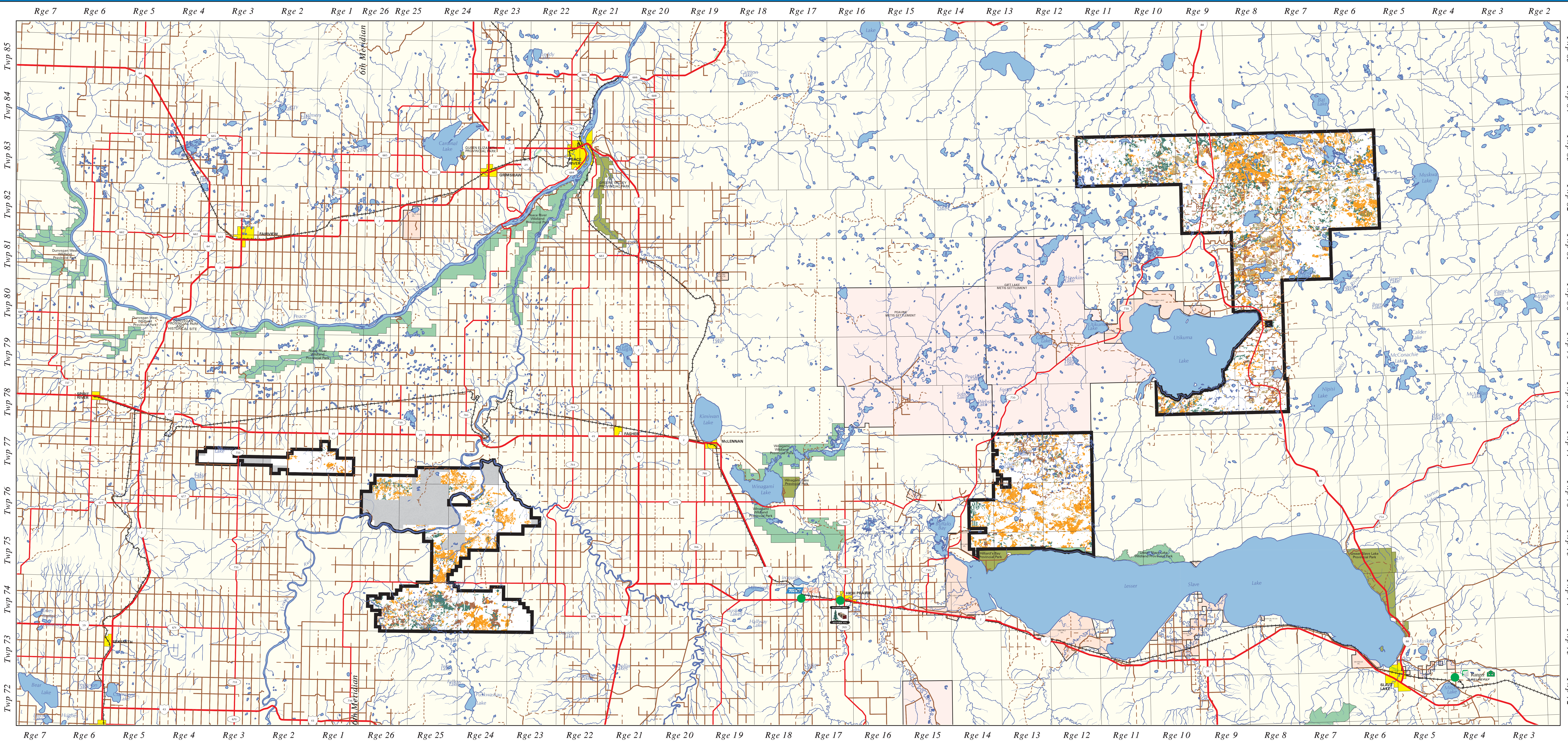
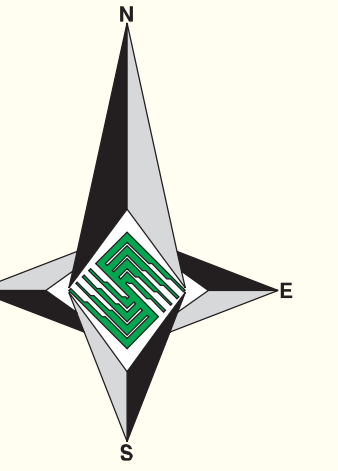


WILDLIFE HABITAT DISTRIBUTION

Species: **MOOSE**
 Time Period: **80 YEAR PROJECTION**



OPERATING AREA

PROVINCIAL INDEX

PLANIMETRIC LEGEND

	PRIMARY HIGHWAY		LAKE/RIVER
	DIVIDED PAVED GRAVEL		CITY/TOWN
	SECONDARY ROAD PAVED GRAVEL		PROVINCIAL PARK
	IMPROVED ROAD UNIMPROVED ROAD		WILDLAND PROVINCIAL PARK METIS SETTLEMENTS FIRST NATIONS RESERVES
	TRUCK TRAIL		GRAZING LEASE*
	RAILWAY		MILL SITE
	RUNWAY		
	TOWNSHIP LINE		
	FMA BOUNDARY		
	STREAM		

* These areas were not selected in habitat analysis

MOOSE

	SW Habitat		SB/P Habitat
	Mixedwood Habitat		Foraging

HABITAT CRITERIA

- Canopy closure B, C, or D density
- Sw, Sb, Pj, Pl Leading Species
- Height greater than 10m

OR

- Deciduous overstorey with an understorey meeting the same specifications as above

OR

- Mixedwood stand with a C or D density and a tree height greater than 10m

FORAGING CRITERIA

- Cutblocks less than 20 years

0 5 10 15 20 25
 KILOMETRES

Map Version 1.00
 Map Date: January 17, 2005
 Original Map Scale: 1:250000
 PMS File: moose_habitat_and_forage_80.dbf
 Map Production: Silvacom Ltd.
 Silvacom Reference: 1-001
 Map File: J:\010\maps\wildlife_map.pml