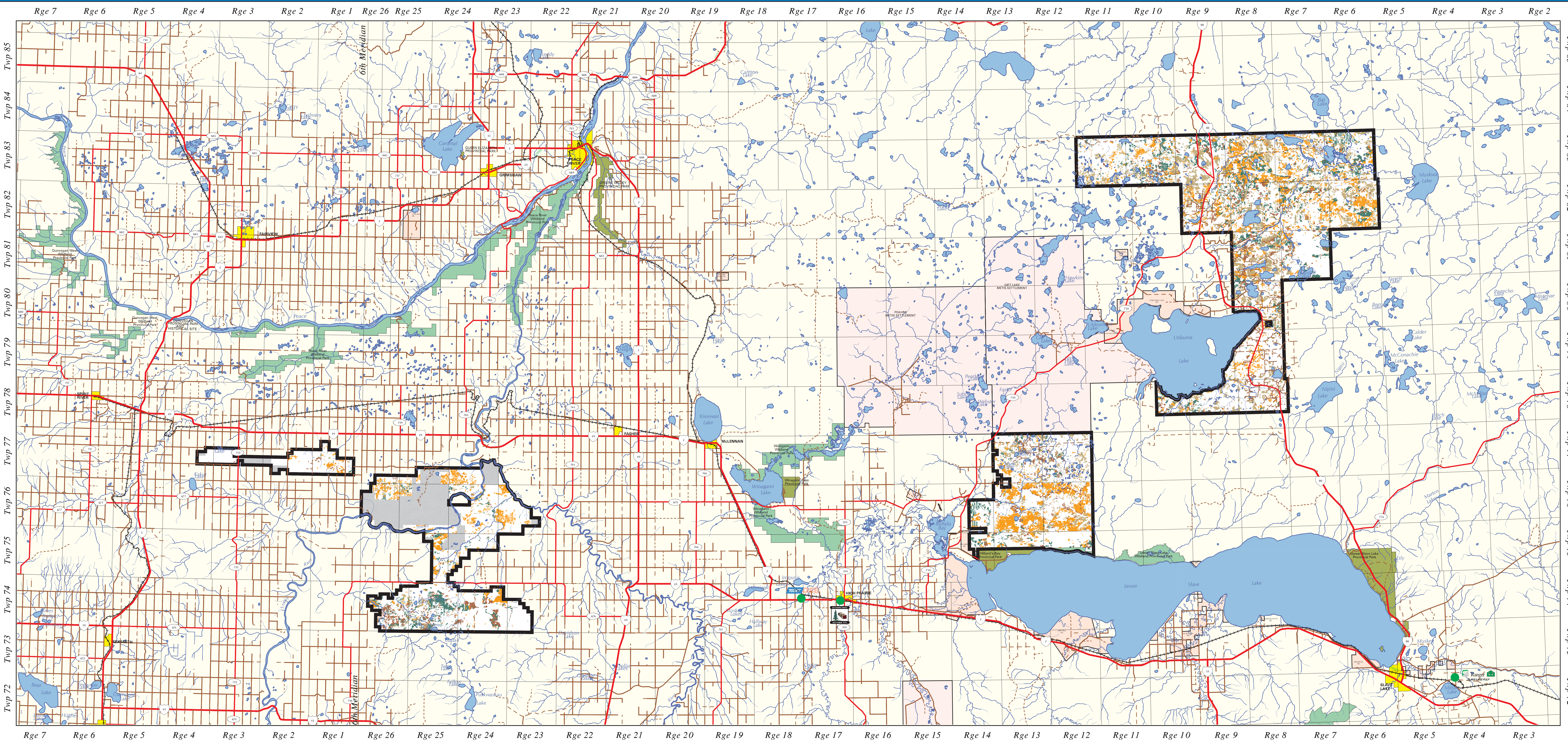
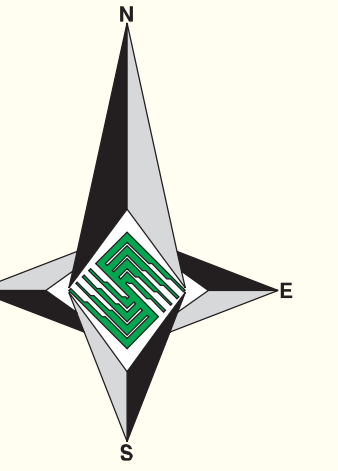


# WILDLIFE HABITAT DISTRIBUTION

Species: **MOOSE**  
 Time Period: **160 YEAR PROJECTION**



### OPERATING AREA

© 2005 TOLKO INDUSTRIES LTD.  
 ANY USE, DUPLICATION OR DISTRIBUTION WITHOUT PERMISSION IS PROHIBITED

### PROVINCIAL INDEX

PROVINCE OF ALBERTA  
 HIGHWAYS AND TRANSPORTATION

### PLANIMETRIC LEGEND

	PRIMARY HIGHWAY		LAKE/RIVER
	DIVIDED PAVED GRAVEL		CITY/TOWN
	SECONDARY ROAD PAVED GRAVEL		PROVINCIAL PARK
	IMPROVED ROAD UNIMPROVED ROAD		WILDLAND PROVINCIAL PARK METIS SETTLEMENTS
	TRUCK TRAIL		FIRST NATIONS RESERVES
	RAILWAY		GRAZING LEASE*
	RUNWAY		MILL SITE
	TOWNSHIP LINE		
	FMA BOUNDARY		
	STREAM		

\* These areas were not selected in habitat analysis

### MOOSE

	SW Habitat		SB/P Habitat
	Mixedwood Habitat		Foraging

#### HABITAT CRITERIA

- Canopy closure B, C, or D density
- Sw, Sb, Pj, Pl Leading Species
- Height greater than 10m

OR

- Deciduous overstorey with an understorey meeting the same specifications as above

OR

- Mixedwood stand with a C or D density and a tree height greater than 10m

#### FORAGING CRITERIA

- Cutblocks less than 20 years

Data is our core business™

Map Version 1.00  
 Map Date: January 17, 2005  
 Original Map Scale: 1:250000  
 PMS File: moose\_habitat\_and\_forage\_160Outf  
 Map Production: Silvacom Ltd.  
 Silvacom Reference: 1-001  
 Map File: J:\016maps\wildlife\_map.pml