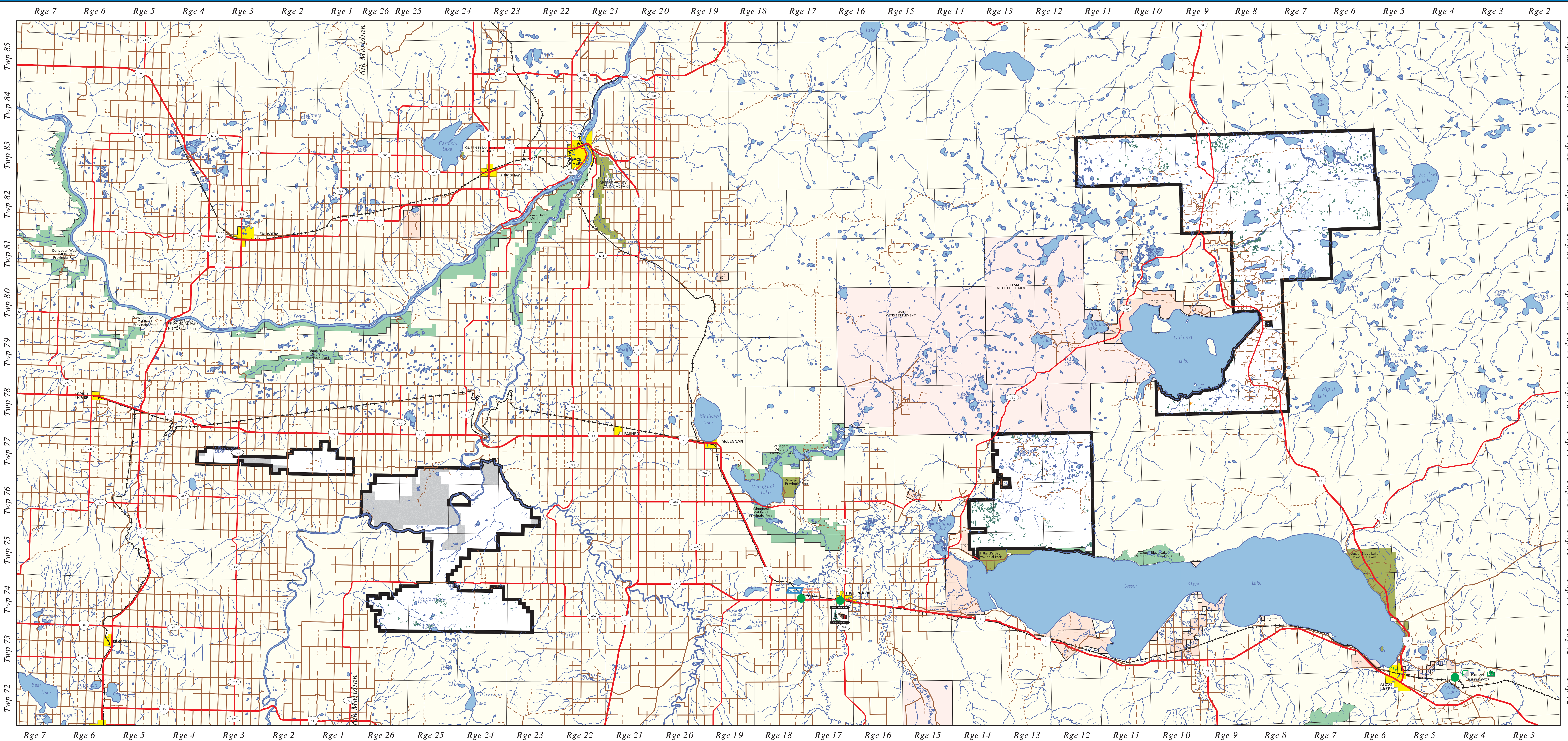
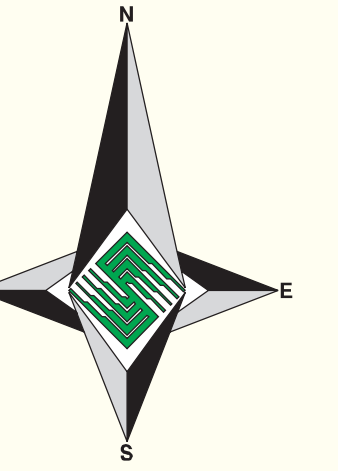


# WILDLIFE HABITAT DISTRIBUTION

Species: **AMERICAN MARTEN**  
 Time Period: **CURRENT**



### OPERATING AREA

### PROVINCIAL INDEX

### PLANIMETRIC LEGEND

	PRIMARY HIGHWAY		LAKE/RIVER
	DIVIDED		CITY/TOWN
	PAVED		PROVINCIAL PARK
	GRAVEL		WILDLAND PROVINCIAL PARK
	SECONDARY ROAD		METIS SETTLEMENTS
	PAVED GRAVEL		FIRST NATIONS RESERVES
	IMPROVED ROAD		GRAZING LEASE*
	UNIMPROVED ROAD		MILL SITE
	TRUCK TRAIL		
	RAILWAY		
	RUNWAY		
	TOWNSHIP LINE		
	FMA BOUNDARY		
	STREAM		

\* These areas were not selected in habitat analysis

### AMERICAN MARTEN

**Habitat**  
**Foraging**

#### HABITAT CRITERIA

- Canopy closure B, C, or D density
- Canopy composition of Sb, Sw, and/or Fb greater than 50%
- Tree Height greater than 15m
- Stand age greater than 90 years

OR

- Deciduous overstorey with an understorey meeting the same specifications as above

#### FORAGE CRITERIA

- Cutblocks greater than or equal to 30 years and less than or equal to 90 years old adjacent to stands meeting the above habitat criteria

Data is our core business™

0 5 10 15 20 25  
KILOMETRES

Map Version 1.00  
 Map Date: January 13, 2005  
 Original Map Scale: 1:250000  
 PMS File: marten\_habitat\_and\_forage\_02.tif  
 Map Production: Silvacom Ltd.  
 Silvacom Reference: 1-001  
 Map File: J:\010\maps\wildlife\_map.mxd