

Run 3

This run is similar to Run 1 with the difference being that the maximum even-flow harvest was calculated for the deciduous.

TABLE 18.6: SUMMARY OF RUN 3 OBJECTIVES, CONSTRAINTS AND RESULTS.

Forest Management Strategy #	Landbase Strategy	Yield Curve Transition	Primary Species	Flow Constraint	Planning Horizon	Target Harvest Age	Minimum Harvest Age	Planned Blocks Sequenced	Adjacency	Adjacency Horizon	Green Up Period	Accum. Block Area (ha)	Conifer AAC	Deciduous AAC
3	Single	Status Quo	Deciduous	Even Flow	160	80	70-Conifer 50-Deciduous	N/A	Off	N/A	N/A	N/A	8,299 (20yr Avg.)	4,821 (20 yr Avg.)

TABLE 18.7: RUN 3 – ANNUAL VOLUME FLOW SUMMARY

Period	Coniferous Volume	Deciduous Volume
5	5445	4852
10	15842	4816
15	8947	4811
20	2964	4806
25	11539	4836
30	11851	4823
35	3024	4875
40	3117	4951
45	3081	4823
50	4987	4875
55	3080	4821
60	3115	4806
65	3163	4835
70	9187	4812
75	9965	4802
80	6487	4811
85	6551	4813
90	14132	4843
95	9096	4834
100	4167	4821
105	10892	4802
110	11093	4816
115	2869	4852
120	2874	4862
125	2902	4909
130	4727	4832
135	2908	4923
140	2843	4814
145	10245	4847
150	9636	4823
155	7822	4808
160	13322	4856
20 year average	8299	4821
160 year average	6934	4838

TABLE 18.4: RUN 3 – ANNUAL VOLUME FLOW SUMMARY

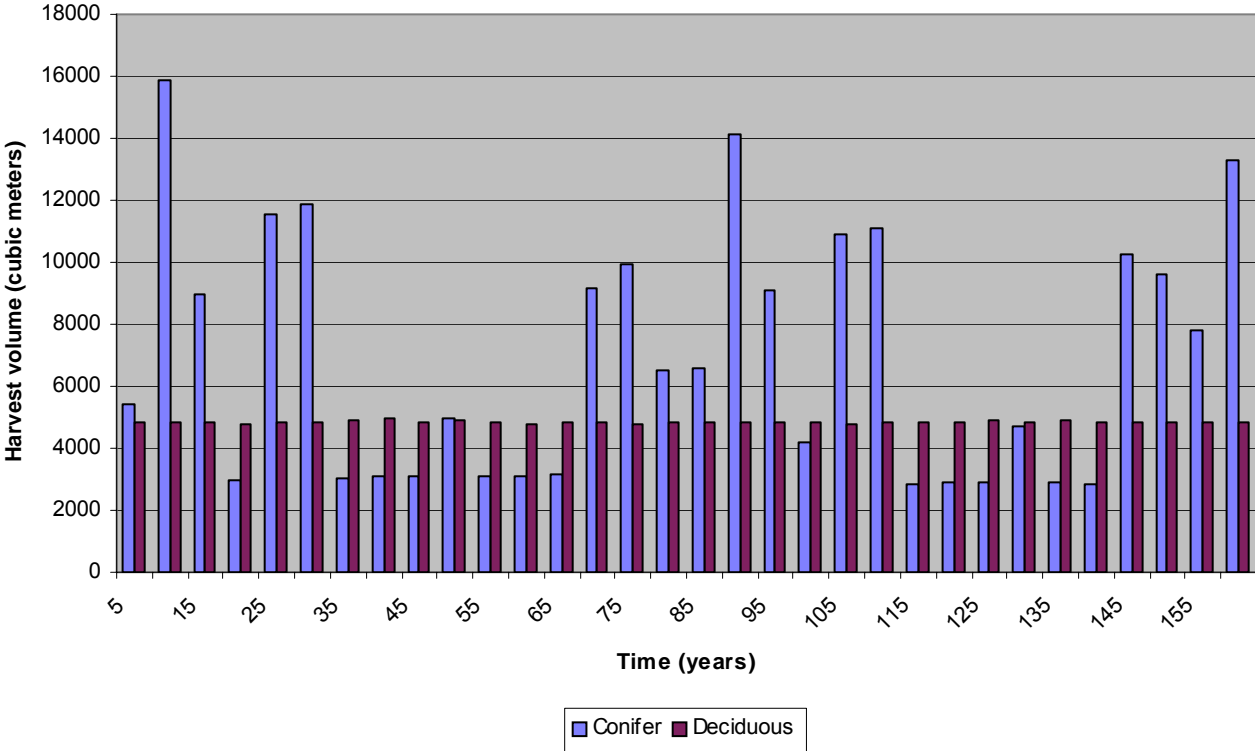


TABLE 18.8: RUN 3 – AVERAGE HARVEST AGE SUMMARY

Period	Average Harvest Age
5	129
10	122
15	112
20	108
25	113
30	115
35	113
40	118
45	123
50	127
55	123
60	128
65	133
70	138
75	134
80	82
85	83
90	83
95	83
100	83
105	82
110	82
115	81
120	80
125	79
130	79
135	76
140	75
145	75
150	75
155	73
160	72

FIGURE 18.5: RUN 3 – AVERAGE HARVEST AGE SUMMARY

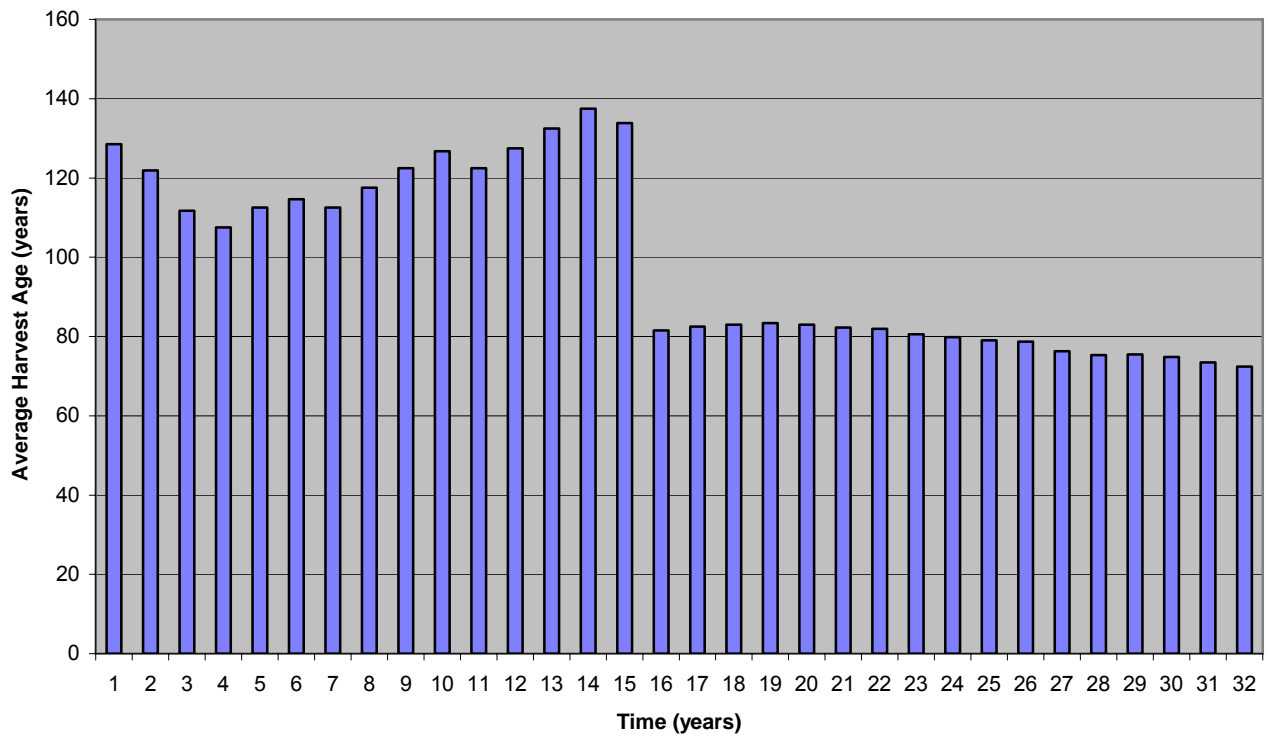
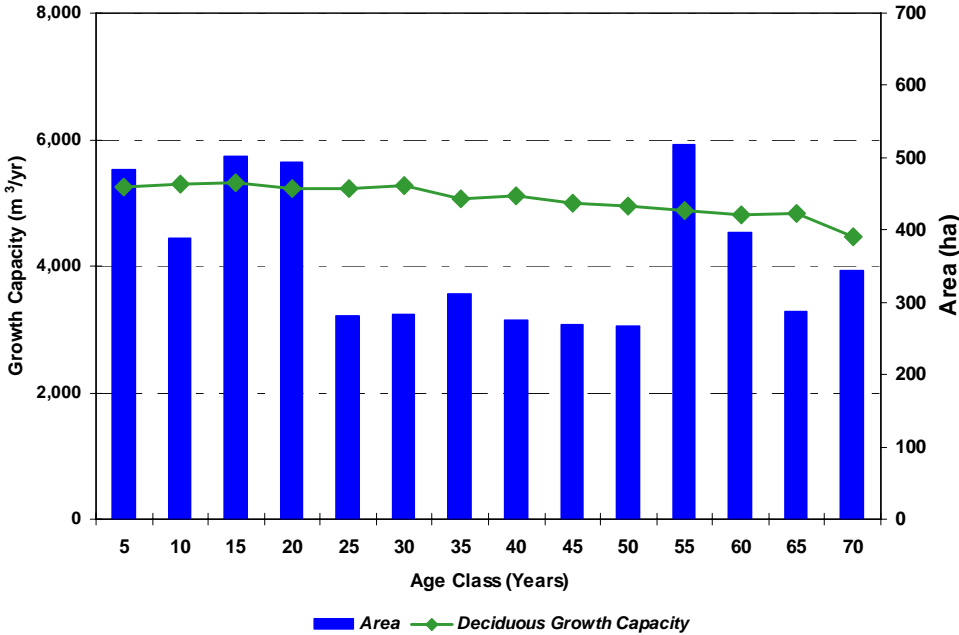


TABLE 18.9: RUN 3 – GROWTH CAPACITY AT 160 YEARS.

Age	Area (ha)	Growth Capacity Total	Annual Growth Capacity
5	484.4	26279.7	5255.94
10	387.5	26419.2	5283.84
15	502.2	26564.6	5312.92
20	492.7	26154.9	5230.98
25	280.4	26077.8	5215.56
30	283.5	26366.7	5273.34
35	311.7	25334.2	5066.84
40	274.3	25506.8	5101.36
45	269	25013.4	5002.68
50	266.3	24768.9	4953.78
55	517.1	24384.8	4876.96
60	397.5	24092	4818.4
65	287.7	24159	4831.8
70	344.7	22362.2	4472.44
Total	5099	353484.2	70696.84

FIGURE 18.6: RUN 3 – POST HARVEST FOREST CONDITIONS¹ AT 160 YEARS IN FUTURE.

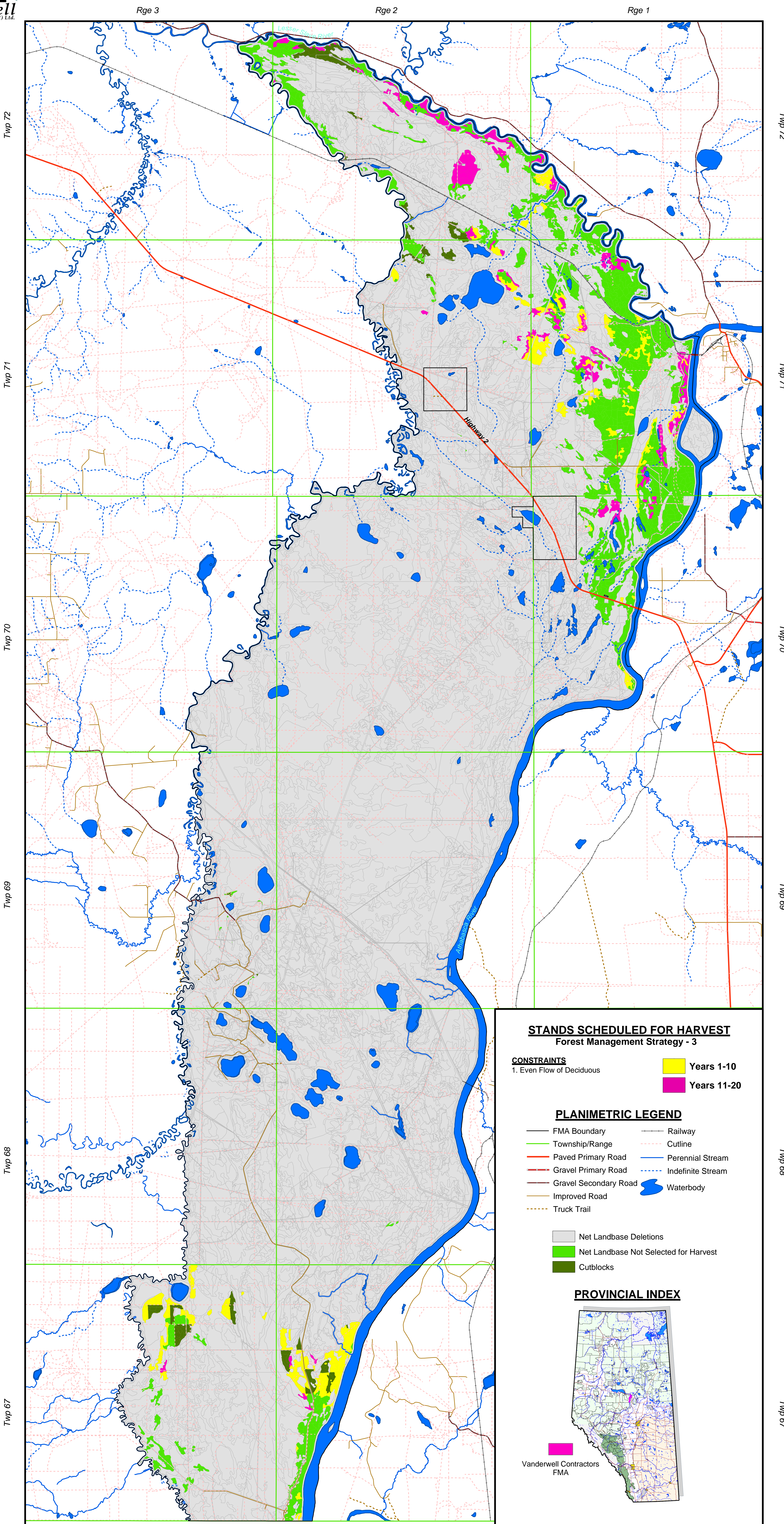


¹ Projected structure of the net landbase after 160 years. The age class distribution (bars) and harvest age volume (growth capacity – line symbol) associated with each age class are presented.



20 YEAR HARVEST SEQUENCE

Within the Vanderwell FMA



STANDS SCHEDULED FOR HARVEST

Forest Management Strategy - 3

CONSTRAINTS

1. Even Flow of Deciduous

- Years 1-10
- Years 11-20

PLANIMETRIC LEGEND

- FMA Boundary
- Township/Range
- Paved Primary Road
- Gravel Primary Road
- Gravel Secondary Road
- Improved Road
- Truck Trail
- Railway
- Cutline
- Perennial Stream
- Indefinite Stream
- Waterbody
- Net Landbase Deletions
- Net Landbase Not Selected for Harvest
- Cutblocks

PROVINCIAL INDEX

