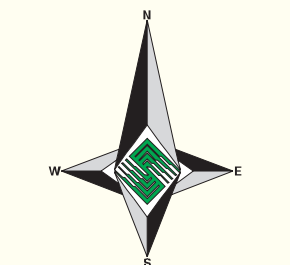




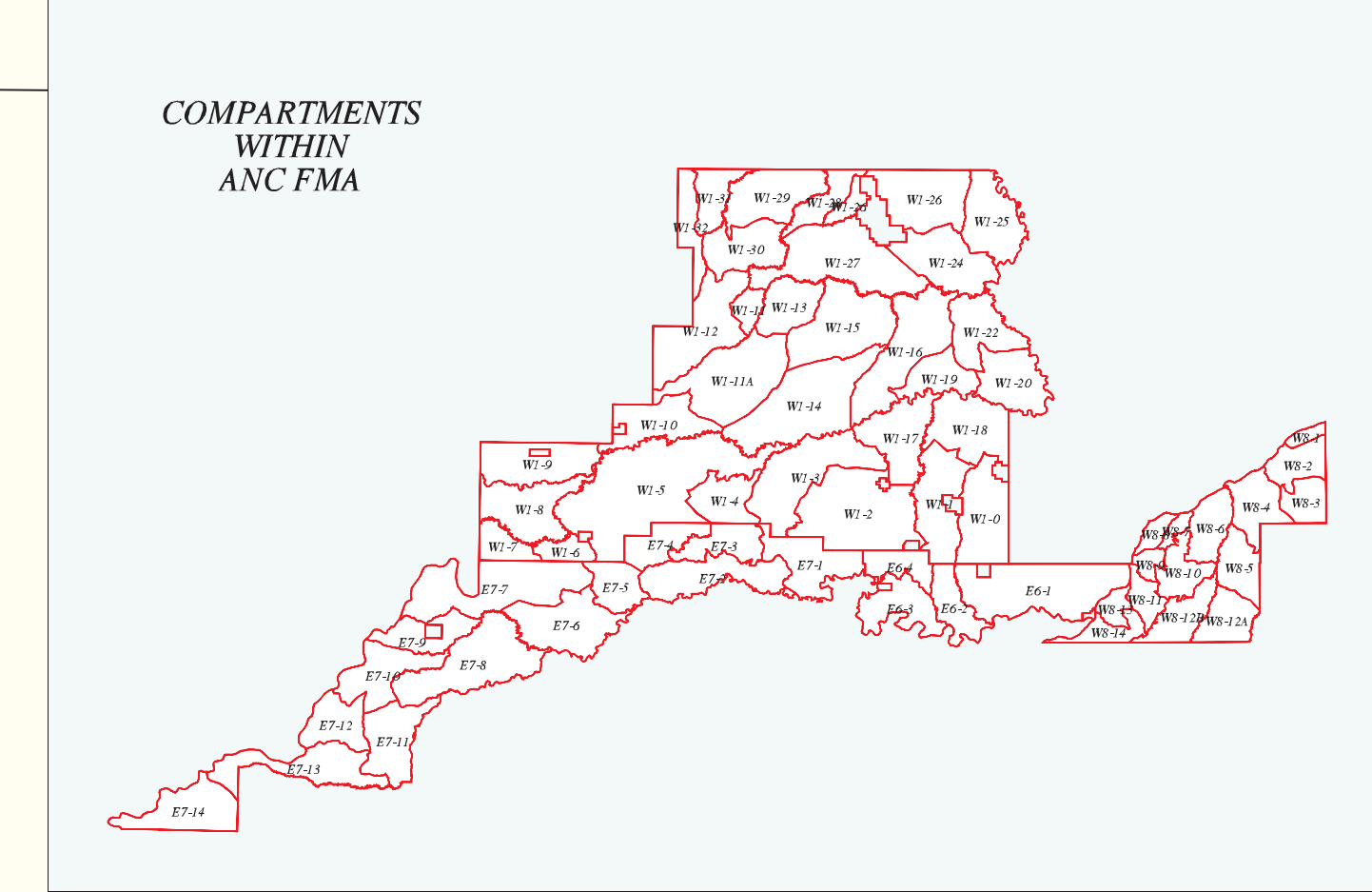
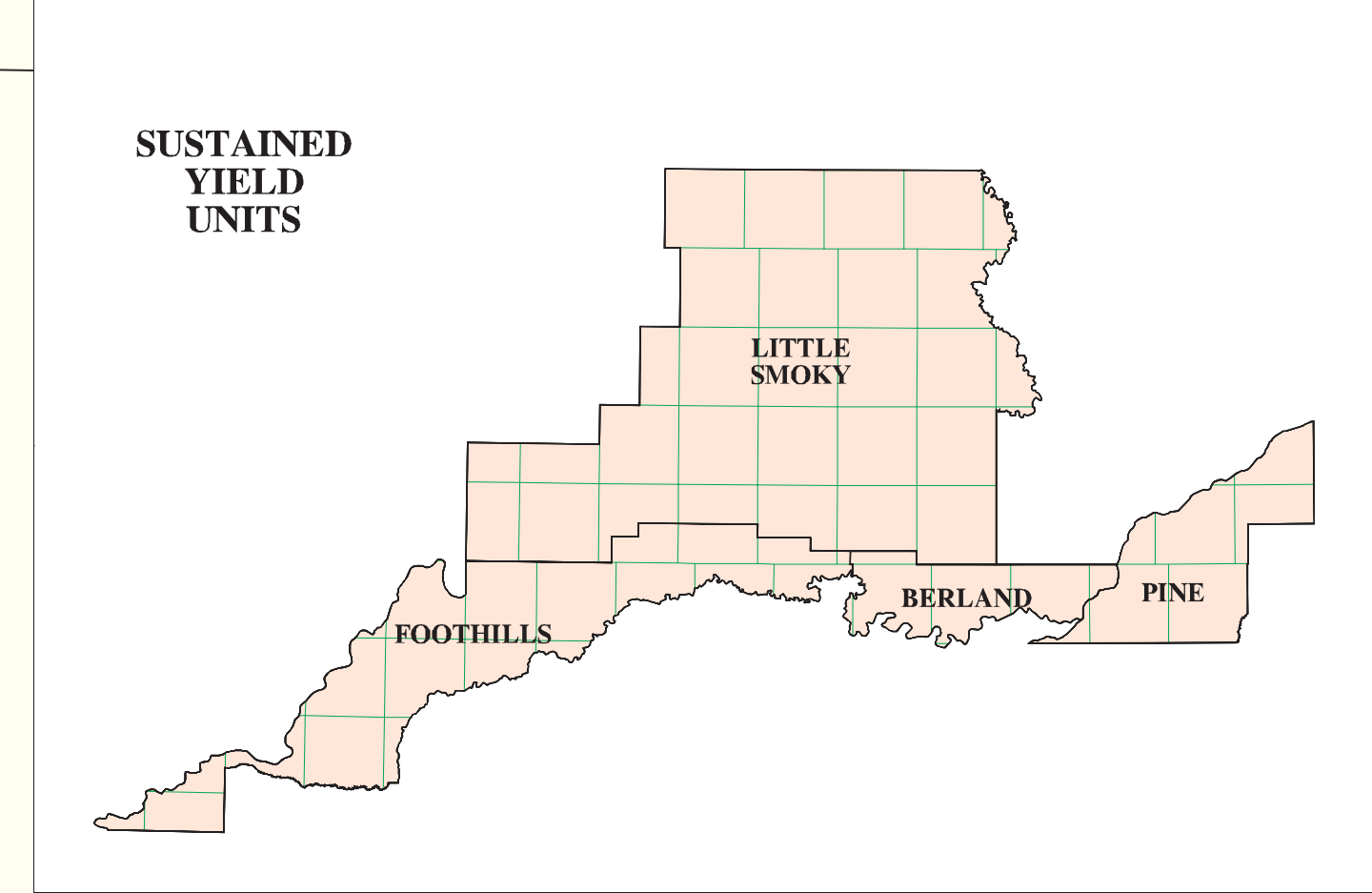
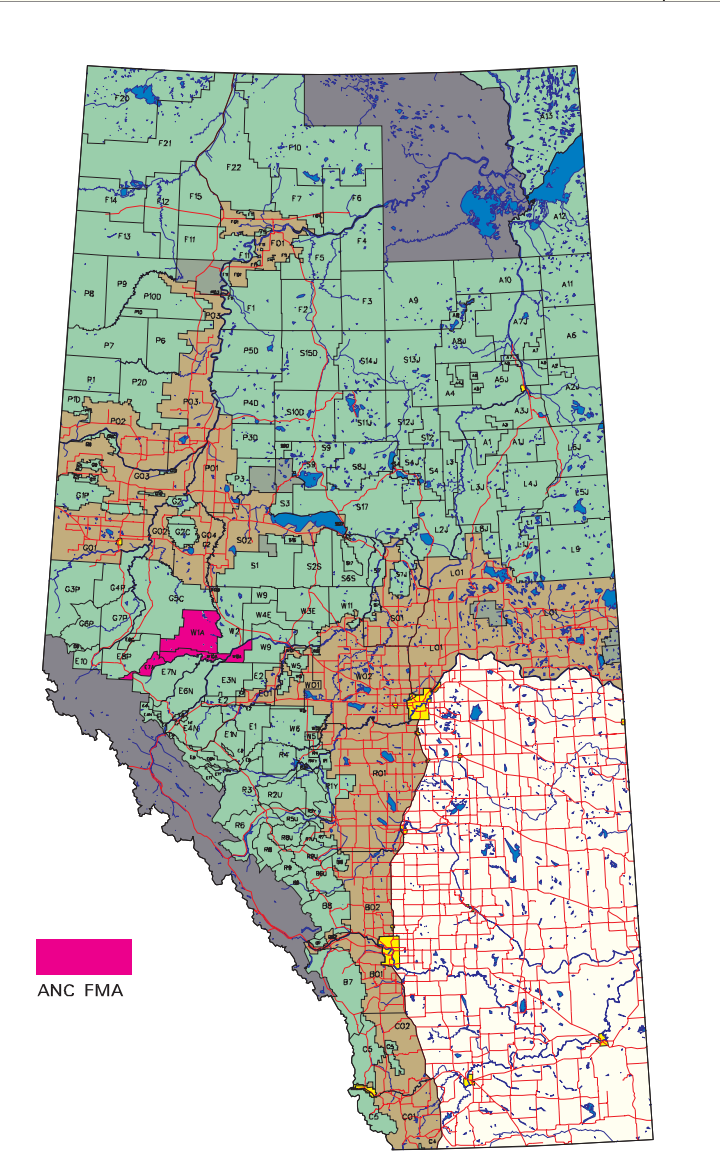
20 YEAR HARVEST PLAN FOOTHILLS SYU (E7)-CARIBOU SEQUENCE

- SEQUENCED
- SILVASYM2 -Run 187 (Conifer AAC: 139500m³/YR)
- AOP BLOCKS SCHEDULED
- 15% VOLUME REDUCTION IN COMPARTMENT E7-14



SCALE 1 : 80,000

- NET LANDBASE
- NET LANDBASE EXCLUSION
- CLEAR CUT
- PARTIAL CUT
- PROPOSED CUTBLOCKS
- STANDS SCHEDULED FOR HARVEST
- YEARS 1-10
- YEARS 11-20



Map Production: Silvacom Ltd.
 Map Date: July 19, 2001
 Silvacom Ref: F-057
 Map File:
 /F-057/cut_map/w1_cut_map/cut_187



Twp 59
Twp 58
Twp 57
Twp 56
Twp 55

Twp 59
Twp 58
Twp 57
Twp 56
Twp 55