

## 2001 Agriculture Profile - 1. Farms and the Land

	Paintearth Co.	Alberta
<b>Total Population</b>	<b>2,192</b>	<b>2,974,807</b>
Urban Population	0	2,405,160
Rural Population	2,192	569,647
<i>Rural as % of Total Population</i>	<i>100</i>	<i>19</i>
<b>Number of Farms (1)</b>	<b>494</b>	<b>53,652</b>
Average Farm Size (acres)	1,601	970
<b>Average Per Reporting Farm</b>	<b>Dollars</b>	
Net Farm Operating Income (2)	29,647	23,764
Farm Capital	1,027,638	1,029,903
Farm Operating Expenses	152,654	166,043
Gross Farm Receipts	178,142	184,885
Area in Crops (acres)	833	522
Seeded Area of Wheat (acres)	481	439
Number of Beef Cows (head)	97	74
Number of Pigs (head)	667	757

Farm Operating Arrangements (3)	# Farms	% Distr.
Sole Proprietorship	305	61.7
Partnership	137	27.7
With Written Agreement	16	3.2
Without Written Agreement	121	24.5
Corporation	52	10.5
Family	47	9.5
Non-Family	5	1.0
Other*	0	0.0
<b>Total Farms</b>	<b>494</b>	<b>100.0</b>

Farms by Total Farm Area	# Farms	% Distr.
Under 10 Acres	2	0.4
10 to 129 Acres	18	3.6
130 to 239 Acres	53	10.7
240 to 399 Acres	39	7.9
400 to 559 Acres	38	7.7
560 to 759 Acres	37	7.5
760 to 1,119 Acres	61	12.3
<b>1,120 Acres and Over</b>	<b>246</b>	<b>49.8</b>
1,120 to 1,599 Acres	62	12.6
1,600 to 2,239 Acres	89	18.0
2,240 to 2,879 Acres	28	5.7
2,880 to 3,519 Acres	19	3.8
3,520 Acres and Over	48	9.7
<b>Total Farms</b>	<b>494</b>	<b>100.0</b>

Farms by Type (4)	# Farms	% Distr.
Dairy	1	0.2
Cattle (Beef)	263	54.5
Hog	4	0.8
Poultry and Egg	1	0.2
Wheat	27	5.6
Grain and Oilseed (Except Wheat)	112	23.2
Field Crop (Except Grain and Oilseed)	25	5.2
Fruit	0	0.0
Vegetable	0	0.0
Miscellaneous Speciality	20	4.1
Livestock Combination	14	2.9
Other Combination	16	3.3
<b>Total Farms Classified</b>	<b>483</b>	<b>100.0</b>

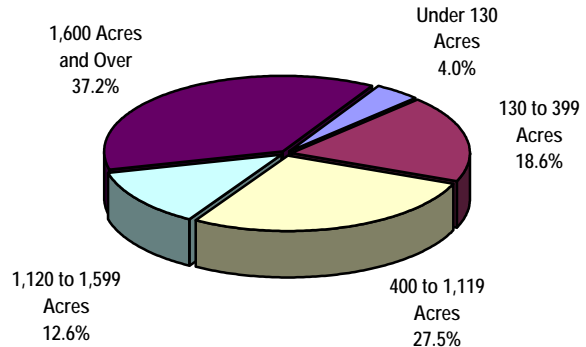
Land Tenure (5)	# Farms	Acres	% Acres
Total Area Owned	482	577,563	73.0
Total Area Rented/Leased/Crop Shared	259	213,091	27.0
Rented/Leased from Government	78	39,765	5.0
Rented/Leased from Others	197	148,723	18.8
Crop Shared from Others	46	24,603	3.1
<b>Total Area of Farms</b>	<b>494</b>	<b>790,654</b>	<b>100.0</b>

Farms by Use of Land	# Farms	Acres	% Acres
Total Land in Crops	447	372,318	47.1
Summerfallow	175	35,678	4.5
Total Pasture Land	...	350,482	44.3
Tame or Seeded Pasture	267	118,885	15.0
Natural Land for Pasture	385	231,597	29.3
All Other Land (6)	348	32,176	4.1
<b>Total Area of Farms</b>	<b>494</b>	<b>790,654</b>	<b>100.0</b>

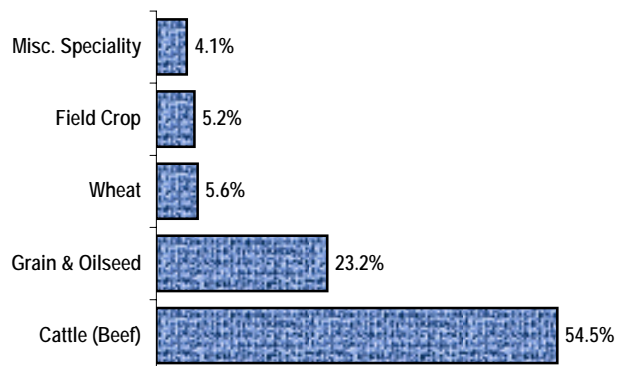
Paid Agricultural Labour (7)	# Farms	# Weeks	% Weeks
Year Round	87	5,853	71.6
Seasonal or Temporary	150	2,323	28.4
<b>Total Paid Labour</b>	<b>201</b>	<b>8,176</b>	<b>100.0</b>

Use of Personal Computers for Farm Management	
Number of Farms Reporting Use	196
% of Total Farms	39.7

**Distribution of Farms by Size**



**Top Five Farm Types**



Regional values do not include municipalities where confidentiality applies. x - Confidential "# Farms" refers to number of farms reporting

\*Institutions, Community Pastures, etc. "% Distr." refers to % of total ...not available

Source: Statistics Canada, 2001 Census of Agriculture

Refer to Census definitions and notes for more information

Prepared by: Statistics and Data Development Unit, Alberta Agriculture, Food and Rural Development

**2001 Agriculture Profile - 2. Financial Characteristics**

	Paintearth Co.	Alberta
<b>Number of Farms</b>	494	53,652
<b>Average Per Reporting Farm</b>		
	<b>Dollars</b>	
Net Farm Operating Income (2)	29,647	23,764
Farm Capital	1,027,638	1,029,903
Farm Operating Expenses	152,654	166,043
Farm Interest Expenses	14,941	14,319
Gross Farm Receipts	178,142	184,885

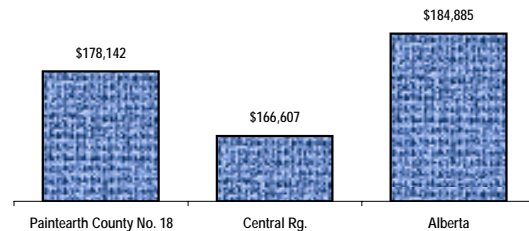
Farm Capital	# Farms	\$ '000	% Distr.
Machinery and Equipment (8)	494	81,431	16.0
Livestock and Poultry	422	97,521	19.2
Land and Buildings (9)	494	328,702	64.7
Owned	485	253,544	49.9
Rented or Leased from Others	260	75,158	14.8
<b>Total Farm Capital</b>	<b>667</b>	<b>507,653</b>	<b>100.0</b>

Farms Classified by Farm Capital	# Farms	% Distr.
Under \$50,000	3	0.6
\$50,000 - \$99,999	9	1.8
\$100,000 - \$199,999	35	7.1
\$200,000 - \$349,999	86	17.4
\$350,000 - \$499,999	68	13.8
\$500,000 - \$999,999	117	23.7
\$1,000,000 - \$1,499,999	85	17.2
\$1,500,000 and Over	91	18.4
<b>Total Farms</b>	<b>494</b>	<b>100.0</b>

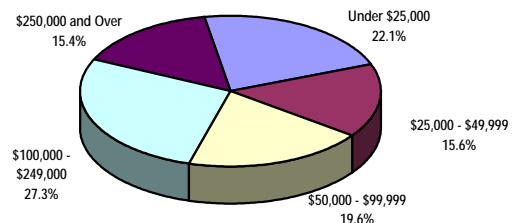
Farm Operating Expenses (10)	# Farms	\$ '000	% Distr.
Farm Interest Expenses	374	5,588	7.4
Custom and Contract Work	337	2,712	3.6
Rent/Leasing of Land and Buildings	221	1,820	2.4
Rent/Leasing of Mach./Equip./Vehicles	92	581	0.8
Wages and Salaries	201	3,461	4.6
Paid to Family Members	146	2,054	2.7
Paid to all Other Persons	104	1,406	1.9
All Fuel Expenses	485	4,661	6.2
Repair/Maint. to Mach./Equip./Vehicles	475	4,781	6.3
Fertilizer and Lime Purchases	342	5,343	7.1
Herbicides/Insecticides/Fungicides	314	4,606	6.1
Seed/Seedling Purchases	319	1,846	2.4
Livestock and Poultry Purchases	318	21,961	29.1
Veterinary Services, Drugs, etc.	395	1,261	1.7
Feed and Supplement Purchases	380	6,683	8.9
Electricity/Telephone/Telecom.	468	1,638	2.2
Repair/Maint. to Farm Bldgs./Fences	425	1,562	2.1
All Other Expenses	469	6,907	9.2
<b>Total Operating Expenses</b>	<b>494</b>	<b>75,411</b>	<b>100.0</b>

Owned and Leased Machinery	Total	Owned Number	Leased
Tractors	1,521	1,512	9
Farm Trucks	1,565	1,554	11
Pick-ups and Cargo Vans	992	981	11
Other Farm Trucks	574	574	0
Cars/Passenger Vehicles	329	320	9
Combines	346	x	x
Swathers/Mower Conditioners	604	600	4
Balers	409	406	3
Forage Harvesters	65	65	0
Tillage/Cult./Seed./Plant. Equip.	966	x	x
<b>Total Gross Farm Receipts (11)</b>		<b>\$ '000</b>	<b>% Alta.</b>
		88,002	0.9
<b>Farms by Gross Farm Receipts</b>		<b># Farms</b>	<b>% Distr.</b>
<b>Under \$25,000</b>		<b>109</b>	<b>22.1</b>
Under \$10,000		45	9.1
\$10,000 - \$24,999		64	13.0
<b>\$25,000 - \$49,999</b>		<b>77</b>	<b>15.6</b>
<b>\$50,000 - \$99,999</b>		<b>97</b>	<b>19.6</b>
<b>\$100,000 and Over</b>		<b>211</b>	<b>42.7</b>
\$100,000 - \$249,999		135	27.3
\$250,000 - \$499,999		45	9.1
\$500,000 and Over		31	6.3
<b>Total Farms</b>		<b>494</b>	<b>100.0</b>

**Average Gross Receipts Per Farm**



**Distribution of Farms by Class of Gross Farm Receipts**



Regional values do not include municipalities where confidentiality applies. x - Confidential  
 "% Distr." refers to % of total      "% Alta." refers to the municipality as a % of Alberta

"# Farms" refers to number of farms reporting

Source: Statistics Canada, 2001 Census of Agriculture

Refer to Census definitions and notes for more information

Prepared by: Statistics and Data Development Unit, Alberta Agriculture, Food and Rural Development

**2001 Agriculture Profile - 3. Crops and Land Management**

Grains*	# Farms	Acres	% Alta.
Total Wheat	198	95,210	1.4
Spring Wheat (Excl. Durum) (12)	197	94,217	1.6
Durum Wheat	1	x	x
Winter Wheat (13)	3	x	x
Oats	239	62,076	4.5
Barley	179	65,952	1.3
Mixed Grains	64	17,524	4.3
Corn for Grain	0	0	0.0
Buckwheat	0	0	0.0
Total Rye	47	4,926	4.2
Fall Rye (13)	42	4,532	5.1
Spring Rye	6	394	1.4

Oilseeds*	# Farms	Acres	% Alta.
Canola	122	41,739	1.6
Flaxseed	2	x	x
Soybeans	0	0	0.0
Mustard Seed	0	0	0.0
Sunflowers	1	x	x
Safflower	0	0	0.0

Other Field Crops* (14)	# Farms	Acres	% Alta.
Potatoes	3	6	0.0
Dry Field Peas	44	10,131	1.7
Lentils	1	x	x
Total Dry Field Beans	0	0	0.0
Dry White Beans	0	0	0.0
Chick Peas	0	0	0.0
Other Dry Beans	0	0	0.0
Canary Seed	0	0	0.0
Sugar Beets	0	0	0.0
Triticale	9	1,911	2.8
Forage Seed for Seed	2	x	x
All Other Field Crops	2	x	x

Hay and Fodder Crops* (14)	# Farms	Acres	% Alta.
Corn for Silage	1	x	x
Alfalfa and Alfalfa Mixtures	190	38,880	1.0
All Other Tame Hay/Fodder Crops	146	31,422	1.4

Selected Vegetables Grown for Sale (15)	# Farms	Acres	% Alta.
Sweet Corn	3	x	x
Tomatoes	3	1.4	2.8
Cucumbers	3	1	0.7
Green Peas	1	x	x
Green or Wax Beans	2	x	x
Cabbage	2	x	x
Cauliflower	1	x	x
Broccoli	1	x	x
Carrots	4	x	x
Rutabagas and Turnips	1	x	x
Beets	1	x	x
Radishes	2	x	x
Dry Onions	2	x	x
Shallots, Green or Seed Onions	0	0	0.0
Lettuces	1	x	x
Squash, Pumpkins and Zucchini	1	x	x
<b>Total Vegetables</b>	<b>4</b>	<b>x</b>	<b>x</b>

Fruits, Berries and Nuts	# Farms	Acres	% Alta.
<b>Grown For Sale (16)</b>			
Producing Area of Fruits/Berries/Nuts	3	x	x
Producing Area of Strawberries	1	x	x
Producing Area of Raspberries	0	0	0.0
<b>Area of Nursery Products</b>	<b>1</b>	<b>x</b>	<b>x</b>
<b>Area of Christmas Trees</b>			
<b>Grown For Sale (17)</b>	<b>1</b>	<b>x</b>	<b>x</b>
	<b># Farms</b>	<b>Dollars</b>	<b>% Alta.</b>
<b>Sales of Forest Products</b>	<b>1</b>	<b>x</b>	<b>x</b>

Greenhouse Products	# Farms	Sq. Feet	% Alta.
Total Area Under Protection	4	48,300	0.4
Area in Use on May 15, 2001	4	44,215	0.4
Flowers	4	x	x
Vegetables	1	x	x
Other Greenhouse Products	0	0	0.0

Mushroom Houses	# Farms	Acres	% Alta.
Total Growing Area	1	x	x

Land Management	# Farms	Acres	% Alta.
Total Number of Farms	494	790,654	1.5
Use of Irrigation	1	x	x
Use of Commercial Fertilizer	290	259,791	1.6
Use of Herbicides (18)	303	243,261	1.5
Use of Insecticides (18)	24	7,525	0.9
Use of Fungicides (18)	24	18,509	1.4

Tillage Practices	# Farms	Acres	% Alta.
Area Prepared for Seeding	390	317,397	1.7
Incorporating Most Residue into Soil	191	102,706	1.5
Retaining Most Residue on Surface	153	100,875	1.5
No Tillage Prior to Seeding	119	113,816	2.2

Manure Application (19)	# Farms	Acres	% Alta.
Using a Solid Spreader	145	12,083	1.2
Using an Irrigation System	0	0	0.0
Using a Liquid Spreader (On Surface)	5	1,285	0.7
Using a Liquid Spreader (Injected)	1	x	x

Forms of Weed Control Use on Summerfallow Land	# Farms	Acres	% Alta.
Total Summerfallow Land	175	35,678	1.2
Chemical Only	38	8,931	1.2
Tillage Only	58	8,249	0.7
Tillage and Chemical Combination	98	18,498	1.6

Farms Reporting Soil Conservation Practices (20)	# Farms	% of Total Farms
Crop Rotation	338	68.4
Permanent Grass Cover	257	52.0
Winter Cover Crops	41	8.3
Contour Cultivation	11	2.2
Strip-Cropping	7	1.4
Grassed Waterways	68	13.8
Windbreaks or Shelterbelts	115	23.3

Regional values do not include municipalities where confidentiality applies. x - Confidential # Farms\* refers to number of farms reporting

"% Alta." refers to the municipality as a % of Alberta Asterisk (\*) refers to seeded acreage

Source: Statistics Canada, 2001 Census of Agriculture

Refer to Census definitions and notes for more information

Prepared by: Statistics and Data Development Unit, Alberta Agriculture, Food and Rural Development

**2001 Agriculture Profile - 4. Livestock, Poultry and Farm Machinery**

Cattle and Calves (21)	# Farms	Head	% Alta.
Total Cows	367	35,809	1.6
Dairy Cows	10	297	0.4
Beef Cows	366	35,512	1.7
Heifers	243	10,662	0.9
Bulls	325	1,865	1.7
Steers	91	9,723	1.0
Calves	365	32,458	1.5
<b>Total Cattle and Calves</b>	<b>385</b>	<b>90,517</b>	<b>1.4</b>

Pigs (22)	# Farms	Head	% Alta.
Boars	13	83	0.9
Sows and Gilts for Breeding	13	1,682	0.8
Nursing and Weaner Pigs	9	3,985	0.6
Grower and Finishing Pigs	16	6,926	0.6
<b>Total Pigs</b>	<b>19</b>	<b>12,676</b>	<b>0.6</b>

Sheep and Lambs	# Farms	Head	% Alta.
Rams	17	55	0.8
Ewes	23	1,368	1.0
Lambs	22	1,484	0.9
<b>Total Sheep and Lambs</b>	<b>25</b>	<b>2,907</b>	<b>0.9</b>

Other Livestock (23)	# Farms	Head	% Alta.
Horses and Ponies	183	1,044	0.7
Goats	18	344	0.8
Rabbits	2	x	x
Mink	0	0	0.0
Fox	0	0	0.0
Bison (Buffalo)	5	195	0.2
Deer (Excluding Wild Deer)	2	x	x
Elk	3	46	0.1
Llamas and Alpacas	11	108	0.8
Wild Boars	0	0	0.0

Colonies of Bees (24)	# Farms	Colonies	% Alta.
Alberta	467	209,821	100.0
Paintearth County No. 18	5	x	x

Poultry Inventory	# Farms	Number	% Alta.
Total Hens and Chickens	38	45,599	0.4
Broilers, Roasters, Cornish	19	9,114	0.1
Pullets for Laying (under 19 wks.)	9	x	x
Laying Hens (19 wks and over)	32	x	x
Laying Hens (Hatchery Supply Flock)	0	0	0.0
Turkeys	6	433	0.1
Other Poultry	18	2,088	0.9

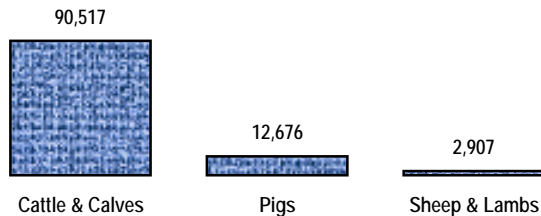
Poultry Production	# Farms	Kilograms	% Alta.
Broilers/Roasters/Cornish Production	5	37,896	0.0
Turkey Production	4	x	x

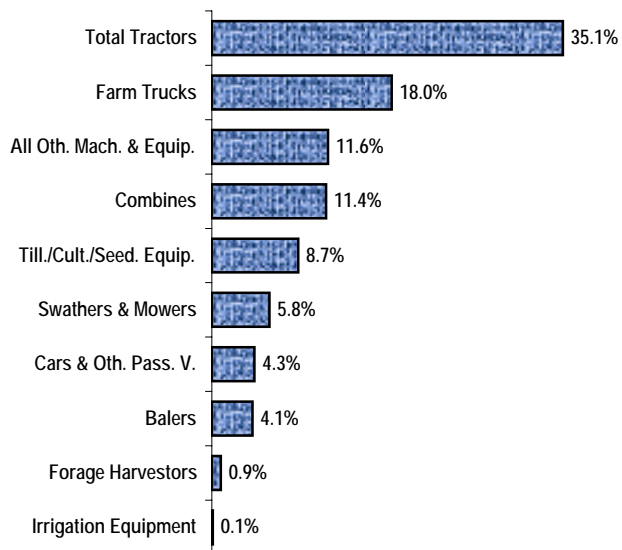
Chicks or Other Poultry Hatched	# Farms	Number	% Alta.
	0	0	0.0

Market Value of Farm Machinery and Equipment (8)	# Farms	Number	\$ '000
Total Tractors	452	1,521	28,618
Total Farm Trucks	482	1,565	14,667
Pick-ups and Cargo Vans	466	992	9,738
Other Farm Trucks	328	574	4,929
Cars and Other Passenger Vehicles	278	329	3,476
Swathers and Mower Conditioners	365	604	4,705
Combines	283	346	9,313
Balers	313	409	3,320
Forage Harvestors	67	65	723
Tillage/Cultivation/Seeding Equip.	359	966	7,049
Irrigation Equipment	7	n/a	90
Other*	372	n/a	9,469

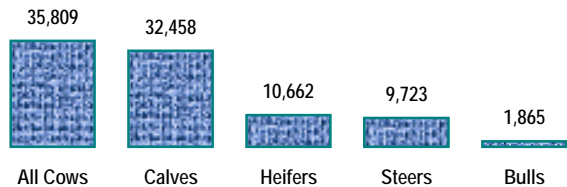
**Livestock Inventory, May 15, 2001  
(Number of Head)**



**Per Cent Distribution of Total Market Value  
of Machinery and Equipment**



**Cattle Inventory, May 15, 2001  
(Number of Head)**



Regional values do not include municipalities where confidentiality applies. x - Confidential "# Farms" refers to number of farms reporting

\* Other Machinery, Workshop and Office Equipment "% Alta." refers to the municipality as a % of Alberta n/a - not applicable

Source: Statistics Canada, 2001 Census of Agriculture

Refer to Census definitions and notes for more information

Prepared by: Statistics and Data Development Unit, Alberta Agriculture, Food and Rural Development