

2001 Agriculture Profile - 1. Farms and the Land

	Pincher Creek	Alberta
Total Population	3,197	2,974,807
Urban Population	0	2,405,160
Rural Population	3,197	569,647
<i>Rural as % of Total Population</i>	<i>100</i>	<i>19</i>
Number of Farms (1)	522	53,652
Average Farm Size (acres)	1,287	970
Average Per Reporting Farm	Dollars	
Net Farm Operating Income (2)	33,853	23,764
Farm Capital	1,801,646	1,029,903
Farm Operating Expenses	300,014	166,043
Gross Farm Receipts	329,392	184,885
Area in Crops (acres)	509	522
Seeded Area of Wheat (acres)	332	439
Number of Beef Cows (head)	97	74
Number of Pigs (head)	973	757

Farm Operating Arrangements (3)	# Farms	% Distr.
Sole Proprietorship	278	53.3
Partnership	169	32.4
With Written Agreement	36	6.9
Without Written Agreement	133	25.5
Corporation	69	13.2
Family	58	11.1
Non-Family	11	2.1
Other*	6	1.1
Total Farms	522	100.0

Farms by Total Farm Area	# Farms	% Distr.
Under 10 Acres	9	1.7
10 to 129 Acres	71	13.6
130 to 239 Acres	89	17.0
240 to 399 Acres	68	13.0
400 to 559 Acres	47	9.0
560 to 759 Acres	43	8.2
760 to 1,119 Acres	40	7.7
1,120 Acres and Over	155	29.7
1,120 to 1,599 Acres	44	8.4
1,600 to 2,239 Acres	32	6.1
2,240 to 2,879 Acres	17	3.3
2,880 to 3,519 Acres	18	3.4
3,520 Acres and Over	44	8.4
Total Farms	522	100.0

Farms by Type (4)	# Farms	% Distr.
Dairy	2	0.4
Cattle (Beef)	340	69.8
Hog	4	0.8
Poultry and Egg	5	1.0
Wheat	2	0.4
Grain and Oilseed (Except Wheat)	41	8.4
Field Crop (Except Grain and Oilseed)	24	4.9
Fruit	3	0.6
Vegetable	0	0.0
Miscellaneous Speciality	45	9.2
Livestock Combination	13	2.7
Other Combination	8	1.6
Total Farms Classified	487	100.0

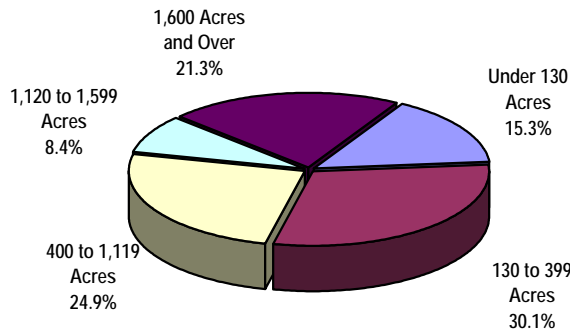
Land Tenure (5)	# Farms	Acres	% Acres
Total Area Owned	489	410,946	61.2
Total Area Rented/Leased/Crop Shared	237	260,676	38.8
Rented/Leased from Government	101	97,566	14.5
Rented/Leased from Others	188	150,435	22.4
Crop Shared from Others	25	12,675	1.9
Total Area of Farms	522	671,622	100.0

Farms by Use of Land	# Farms	Acres	% Acres
Total Land in Crops	401	204,109	30.4
Summerfallow	53	10,186	1.5
Total Pasture Land	...	426,387	63.5
Tame or Seeded Pasture	155	45,383	6.8
Natural Land for Pasture	442	381,004	56.7
All Other Land (6)	295	30,940	4.6
Total Area of Farms	522	671,622	100.0

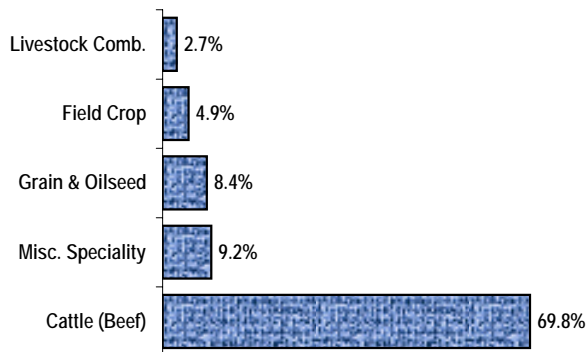
Paid Agricultural Labour (7)	# Farms	# Weeks	% Weeks
Year Round	113	9,089	84.7
Seasonal or Temporary	117	1,646	15.3
Total Paid Labour	204	10,735	100.0

Use of Personal Computers for Farm Management	
Number of Farms Reporting Use	262
% of Total Farms	50.2

Distribution of Farms by Size



Top Five Farm Types



Regional values do not include municipalities where confidentiality applies. x - Confidential "# Farms" refers to number of farms reporting

*Institutions, Community Pastures, etc. "% Distr." refers to % of total ...not available

Source: Statistics Canada, 2001 Census of Agriculture

Refer to Census definitions and notes for more information

Prepared by: Statistics and Data Development Unit, Alberta Agriculture, Food and Rural Development

2001 Agriculture Profile - 2. Financial Characteristics

	Pincher Creek	Alberta
Number of Farms	522	53,652
Average Per Reporting Farm		
	Dollars	
Net Farm Operating Income (2)	33,853	23,764
Farm Capital	1,801,646	1,029,903
Farm Operating Expenses	300,014	166,043
Farm Interest Expenses	19,958	14,319
Gross Farm Receipts	329,392	184,885

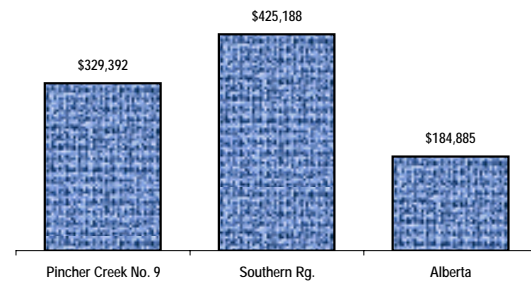
Farm Capital	# Farms	\$ '000	% Distr.
Machinery and Equipment (8)	522	80,992	8.6
Livestock and Poultry	470	138,567	14.7
Land and Buildings (9)	522	720,900	76.7
Owned	491	510,767	54.3
Rented or Leased from Others	241	210,133	22.3
Total Farm Capital	522	940,459	100.0

Farms Classified by Farm Capital	# Farms	% Distr.
Under \$50,000	3	0.6
\$50,000 - \$99,999	4	0.8
\$100,000 - \$199,999	22	4.2
\$200,000 - \$349,999	80	15.3
\$350,000 - \$499,999	58	11.1
\$500,000 - \$999,999	135	25.9
\$1,000,000 - \$1,499,999	67	12.8
\$1,500,000 and Over	153	29.3
Total Farms	522	100.0

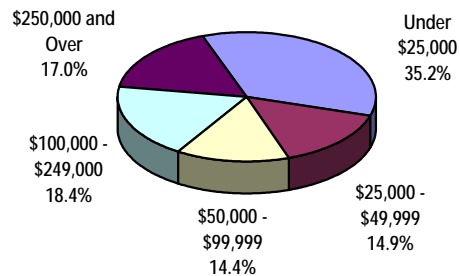
Farm Operating Expenses (10)	# Farms	\$ '000	% Distr.
Farm Interest Expenses	349	6,965	4.4
Custom and Contract Work	311	4,478	2.9
Rent/Leasing of Land and Buildings	229	2,881	1.8
Rent/Leasing of Mach./Equip./Vehicles	116	1,101	0.7
Wages and Salaries	204	4,305	2.7
Paid to Family Members	153	2,336	1.5
Paid to all Other Persons	88	1,969	1.3
All Fuel Expenses	494	3,745	2.4
Repair/Maint. to Mach./Equip./Vehicles	483	3,782	2.4
Fertilizer and Lime Purchases	281	4,841	3.1
Herbicides/Insecticides/Fungicides	192	1,668	1.1
Seed/Seedling Purchases	232	941	0.6
Livestock and Poultry Purchases	305	70,378	44.9
Veterinary Services, Drugs, etc.	440	2,104	1.3
Feed and Supplement Purchases	439	38,362	24.5
Electricity/Telephone/Telecom.	465	1,623	1.0
Repair/Maint. to Farm Bldgs./Fences	464	1,861	1.2
All Other Expenses	496	7,571	4.8
Total Operating Expenses	522	156,608	100.0

Owned and Leased Machinery	Total	Owned Number	Leased
Tractors	1,273	1,229	45
Farm Trucks	1,424	1,398	26
Pick-ups and Cargo Vans	994	976	18
Other Farm Trucks	430	422	8
Cars/Passenger Vehicles	345	338	7
Combines	163	157	6
Swathers/Mower Conditioners	462	454	8
Balers	400	389	11
Forage Harvesters	28	28	0
Tillage/Cult./Seed./Plant. Equip.	852	x	x
		\$ '000	% Alta.
Total Gross Farm Receipts (11)		171,943	1.7
Farms by Gross Farm Receipts	# Farms	% Distr.	
Under \$25,000	184	35.2	
Under \$10,000	94	18.0	
\$10,000 - \$24,999	90	17.2	
\$25,000 - \$49,999	78	14.9	
\$50,000 - \$99,999	75	14.4	
\$100,000 and Over	185	35.4	
\$100,000 - \$249,999	96	18.4	
\$250,000 - \$499,999	50	9.6	
\$500,000 and Over	39	7.5	
Total Farms	522	100.0	

Average Gross Receipts Per Farm



Distribution of Farms by Class of Gross Farm Receipts



Regional values do not include municipalities where confidentiality applies. x - Confidential
 "% Distr." refers to % of total "% Alta." refers to the municipality as a % of Alberta

"# Farms" refers to number of farms reporting

Source: Statistics Canada, 2001 Census of Agriculture

Refer to Census definitions and notes for more information

Prepared by: Statistics and Data Development Unit, Alberta Agriculture, Food and Rural Development

2001 Agriculture Profile - 3. Crops and Land Management

Grains*	# Farms	Acres	% Alta.
Total Wheat	54	17,926	0.3
Spring Wheat (Excl. Durum) (12)	37	14,372	0.2
Durum Wheat	1	x	x
Winter Wheat (13)	24	x	x
Oats	109	10,638	0.8
Barley	167	96,295	2.0
Mixed Grains	16	4,365	1.1
Corn for Grain	0	0	0.0
Buckwheat	0	0	0.0
Total Rye	9	961	0.8
Fall Rye (13)	9	961	1.1
Spring Rye	0	0	0.0

Oilseeds*	# Farms	Acres	% Alta.
Canola	8	x	x
Flaxseed	1	x	x
Soybeans	0	0	0.0
Mustard Seed	1	x	x
Sunflowers	0	0	0.0
Safflower	0	0	0.0

Other Field Crops* (14)	# Farms	Acres	% Alta.
Potatoes	4	x	x
Dry Field Peas	2	x	x
Lentils	0	0	0.0
Total Dry Field Beans	0	0	0.0
Dry White Beans	0	0	0.0
Chick Peas	0	0	0.0
Other Dry Beans	0	0	0.0
Canary Seed	1	x	x
Sugar Beets	0	0	0.0
Triticale	4	860	1.3
Forage Seed for Seed	1	x	x
All Other Field Crops	3	x	x

Hay and Fodder Crops* (14)	# Farms	Acres	% Alta.
Corn for Silage	0	0	0.0
Alfalfa and Alfalfa Mixtures	279	53,942	1.4
All Other Tame Hay/Fodder Crops	116	14,884	0.7

Selected Vegetables Grown for Sale (15)	# Farms	Acres	% Alta.
Sweet Corn	2	x	x
Tomatoes	1	x	x
Cucumbers	1	x	x
Green Peas	0	0	0.0
Green or Wax Beans	0	0	0.0
Cabbage	1	x	x
Cauliflower	0	0	0.0
Broccoli	0	0	0.0
Carrots	1	x	x
Rutabagas and Turnips	1	x	x
Beets	2	x	x
Radishes	2	x	x
Dry Onions	1	x	x
Shallots, Green or Seed Onions	0	0	0.0
Lettuces	1	x	x
Squash, Pumpkins and Zucchini	2	x	x
Total Vegetables	5	x	x

Fruits, Berries and Nuts	# Farms	Acres	% Alta.
Grown For Sale (16)			
Producing Area of Fruits/Berries/Nuts	4	7	0.3
Producing Area of Strawberries	2	x	x
Producing Area of Raspberries	2	x	x
Area of Nursery Products	2	x	x

Area of Christmas Trees	# Farms	Dollars	% Alta.
Grown For Sale (17)	1	x	x
Sales of Forest Products	7	175,129	2.5

Greenhouse Products	# Farms	Sq. Feet	% Alta.
Total Area Under Protection	2	x	x
Area in Use on May 15, 2001	2	x	x
Flowers	2	x	x
Vegetables	2	x	x
Other Greenhouse Products	0	0	0.0

Mushroom Houses	# Farms	Acres	% Alta.
Total Growing Area	0	0	0.0

Land Management	# Farms	Acres	% Alta.
Total Number of Farms	522	671,622	1.3
Use of Irrigation	41	7,045	0.6
Use of Commercial Fertilizer	252	148,314	0.9
Use of Herbicides (18)	179	113,169	0.7
Use of Insecticides (18)	4	1,074	0.1
Use of Fungicides (18)	5	21,108	1.6

Tillage Practices	# Farms	Acres	% Alta.
Area Prepared for Seeding	295	142,405	0.8
Incorporating Most Residue into Soil	154	42,170	0.6
Retaining Most Residue on Surface	116	67,345	1.0
No Tillage Prior to Seeding	61	32,890	0.6

Manure Application (19)	# Farms	Acres	% Alta.
Using a Solid Spreader	174	12,275	1.2
Using an Irrigation System	2	x	x
Using a Liquid Spreader (On Surface)	6	1,170	0.6
Using a Liquid Spreader (Injected)	2	x	x

Forms of Weed Control Use on Summerfallow Land	# Farms	Acres	% Alta.
Total Summerfallow Land	53	10,186	0.3
Chemical Only	15	6,498	0.9
Tillage Only	24	2,348	0.2
Tillage and Chemical Combination	18	1,340	0.1

Farms Reporting Soil Conservation Practices (20)	# Farms	% of Total Farms
Crop Rotation	196	37.5
Permanent Grass Cover	289	55.4
Winter Cover Crops	27	5.2
Contour Cultivation	26	5.0
Strip-Cropping	22	4.2
Grassed Waterways	101	19.3
Windbreaks or Shelterbelts	91	17.4

Regional values do not include municipalities where confidentiality applies. x - Confidential # Farms* refers to number of farms reporting

"% Alta." refers to the municipality as a % of Alberta Asterisk (*) refers to seeded acreage

Source: Statistics Canada, 2001 Census of Agriculture

Refer to Census definitions and notes for more information

Prepared by: Statistics and Data Development Unit, Alberta Agriculture, Food and Rural Development

2001 Agriculture Profile - 4. Livestock, Poultry and Farm Machinery

Cattle and Calves (21)	# Farms	Head	% Alta.
Total Cows	356	34,787	1.6
Dairy Cows	15	540	0.6
Beef Cows	354	34,247	1.6
Heifers	244	35,252	3.0
Bulls	300	1,874	1.7
Steers	134	19,235	1.9
Calves	363	32,734	1.5
Total Cattle and Calves	396	123,882	1.9

Pigs (22)	# Farms	Head	% Alta.
Boars	8	54	0.6
Sows and Gilts for Breeding	9	1,635	0.8
Nursing and Weaner Pigs	12	5,937	0.9
Grower and Finishing Pigs	14	8,909	0.8
Total Pigs	17	16,535	0.8

Sheep and Lambs	# Farms	Head	% Alta.
Rams	24	108	1.6
Ewes	33	2,569	2.0
Lambs	30	3,596	2.1
Total Sheep and Lambs	36	6,273	2.0

Other Livestock (23)	# Farms	Head	% Alta.
Horses and Ponies	290	1,886	1.2
Goats	12	x	x
Rabbits	2	x	x
Mink	0	0	0.0
Fox	0	0	0.0
Bison (Buffalo)	8	419	0.5
Deer (Excluding Wild Deer)	1	x	x
Elk	2	x	x
Llamas and Alpacas	17	481	3.7
Wild Boars	1	x	x

Colonies of Bees (24)	# Farms	Colonies	% Alta.
Alberta	467	209,821	100.0
Pincher Creek No. 9	4	151	0.1

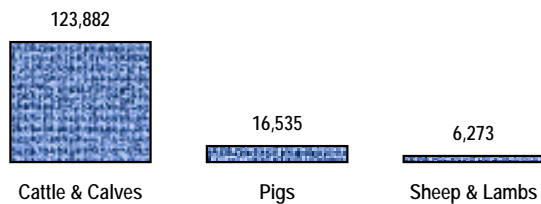
Poultry Inventory	# Farms	Number	% Alta.
Total Hens and Chickens	61	154,851	1.3
Broilers, Roasters, Cornish	24	115,643	1.3
Pullets for Laying (under 19 wks.)	21	12,924	1.2
Laying Hens (19 wks and over)	51	26,284	1.1
Laying Hens (Hatchery Supply Flock)	1	x	x
Turkeys	11	x	x
Other Poultry	22	3,575	1.6

Poultry Production	# Farms	Kilograms	% Alta.
Broilers/Roasters/Cornish Production	14	2,005,845	1.9
Turkey Production	4	x	x

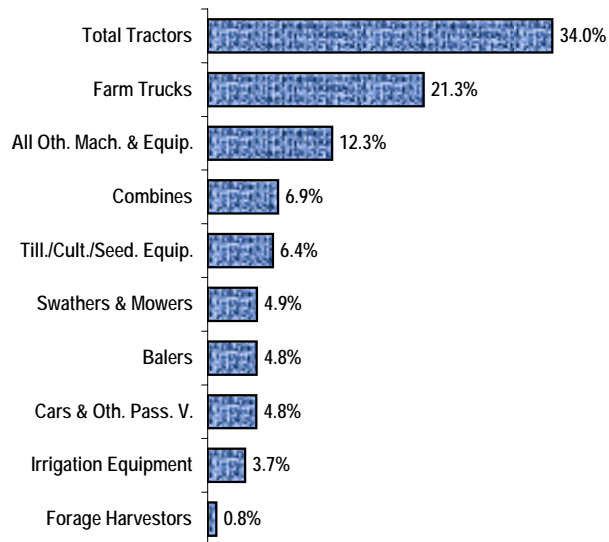
Chicks or Other Poultry Hatched	# Farms	Number	% Alta.
	0	0	0.0

Market Value of Farm Machinery and Equipment (8)	# Farms	Number	\$ '000
Total Tractors	449	1,273	27,543
Total Farm Trucks	495	1,424	17,249
Pick-ups and Cargo Vans	483	994	11,976
Other Farm Trucks	237	430	5,272
Cars and Other Passenger Vehicles	286	345	3,891
Swathers and Mower Conditioners	281	462	3,933
Combines	126	163	5,628
Balers	288	400	3,918
Forage Harvestors	26	28	678
Tillage/Cultivation/Seeding Equip.	271	852	5,212
Irrigation Equipment	58	n/a	3,001
Other*	387	n/a	9,940

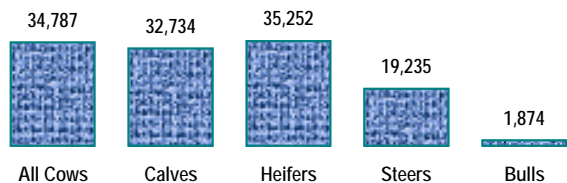
**Livestock Inventory, May 15, 2001
(Number of Head)**



**Per Cent Distribution of Total Market Value of
Machinery and Equipment**



**Cattle Inventory, May 15, 2001
(Number of Head)**



Regional values do not include municipalities where confidentiality applies. x - Confidential "# Farms" refers to number of farms reporting

* Other Machinery, Workshop and Office Equipment "% Alta." refers to the municipality as a % of Alberta n/a - not applicable

Source: Statistics Canada, 2001 Census of Agriculture

Refer to Census definitions and notes for more information

Prepared by: Statistics and Data Development Unit, Alberta Agriculture, Food and Rural Development