

2001 Agriculture Profile - 1. Farms and the Land

	Big Lakes	Alberta
Total Population	5,845	2,974,807
Urban Population	0	2,405,160
Rural Population	5,845	569,647
<i>Rural as % of Total Population</i>	<i>100</i>	<i>19</i>
Number of Farms (1)	467	53,652
Average Farm Size (acres)	972	970
Average Per Reporting Farm	Dollars	
Net Farm Operating Income (2)	8,898	23,764
Farm Capital	591,276	1,029,903
Farm Operating Expenses	61,627	166,043
Gross Farm Receipts	67,391	184,885
Area in Crops (acres)	448	522
Seeded Area of Wheat (acres)	216	439
Number of Beef Cows (head)	75	74
Number of Pigs (head)	78	757

Farm Operating Arrangements (3)	# Farms	% Distr.
Sole Proprietorship	297	63.6
Partnership	131	28.1
With Written Agreement	18	3.9
Without Written Agreement	113	24.2
Corporation	37	7.9
Family	30	6.4
Non-Family	7	1.5
Other*	2	0.4
Total Farms	467	100.0

Farms by Total Farm Area	# Farms	% Distr.
Under 10 Acres	1	0.2
10 to 129 Acres	12	2.6
130 to 239 Acres	89	19.1
240 to 399 Acres	57	12.2
400 to 559 Acres	56	12.0
560 to 759 Acres	51	10.9
760 to 1,119 Acres	69	14.8
1,120 Acres and Over	132	28.3
1,120 to 1,599 Acres	60	12.8
1,600 to 2,239 Acres	30	6.4
2,240 to 2,879 Acres	16	3.4
2,880 to 3,519 Acres	12	2.6
3,520 Acres and Over	14	3.0
Total Farms	467	100.0

Farms by Type (4)	# Farms	% Distr.
Dairy	2	0.5
Cattle (Beef)	236	54.0
Hog	3	0.7
Poultry and Egg	1	0.2
Wheat	15	3.4
Grain and Oilseed (Except Wheat)	56	12.8
Field Crop (Except Grain and Oilseed)	71	16.2
Fruit	0	0.0
Vegetable	0	0.0
Miscellaneous Speciality	40	9.2
Livestock Combination	8	1.8
Other Combination	5	1.1
Total Farms Classified	437	100.0

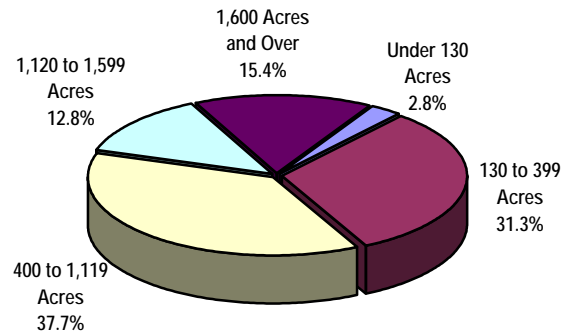
Land Tenure (5)	# Farms	Acres	% Acres
Total Area Owned	451	277,345	61.1
Total Area Rented/Leased/Crop Shared	231	176,598	38.9
Rented/Leased from Government	133	109,321	24.1
Rented/Leased from Others	140	58,114	12.8
Crop Shared from Others	34	9,163	2.0
Total Area of Farms	467	453,943	100.0

Farms by Use of Land	# Farms	Acres	% Acres
Total Land in Crops	409	183,071	40.3
Summerfallow	123	19,687	4.3
Total Pasture Land	...	185,067	40.8
Tame or Seeded Pasture	238	75,287	16.6
Natural Land for Pasture	261	109,780	24.2
All Other Land (6)	363	66,118	14.6
Total Area of Farms	467	453,943	100.0

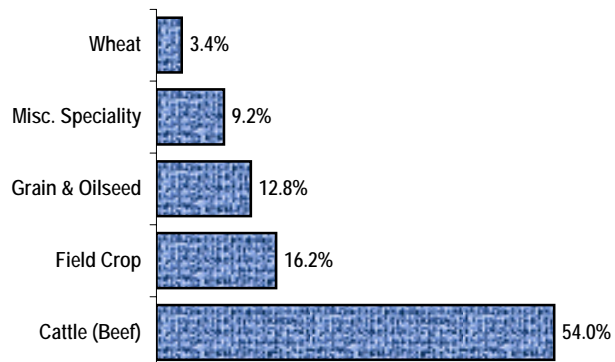
Paid Agricultural Labour (7)	# Farms	# Weeks	% Weeks
Year Round	74	3,800	72.2
Seasonal or Temporary	100	1,464	27.8
Total Paid Labour	161	5,264	100.0

Use of Personal Computers for Farm Management	
Number of Farms Reporting Use	162
% of Total Farms	34.7

Distribution of Farms by Size



Top Five Farm Types



Regional values do not include municipalities where confidentiality applies. x - Confidential "# Farms" refers to number of farms reporting

*Institutions, Community Pastures, etc. "% Distr." refers to % of total ...not available

Source: Statistics Canada, 2001 Census of Agriculture

Refer to Census definitions and notes for more information

Prepared by: Statistics and Data Development Unit, Alberta Agriculture, Food and Rural Development

2001 Agriculture Profile - 2. Financial Characteristics

	Big Lakes	Alberta
Number of Farms	467	53,652
Average Per Reporting Farm		
	Dollars	
Net Farm Operating Income (2)	8,898	23,764
Farm Capital	591,276	1,029,903
Farm Operating Expenses	61,627	166,043
Farm Interest Expenses	8,921	14,319
Gross Farm Receipts	67,391	184,885

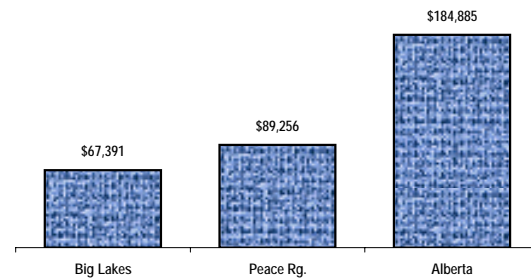
Farm Capital	# Farms	\$ '000	% Distr.
Machinery and Equipment (8)	467	56,209	20.4
Livestock and Poultry	351	51,635	18.7
Land and Buildings (9)	467	168,282	60.9
Owned	452	130,437	47.2
Rented or Leased from Others	231	37,844	13.7
Total Farm Capital	467	276,126	100.0

Farms Classified by Farm Capital	# Farms	% Distr.
Under \$50,000	0	0.0
\$50,000 - \$99,999	16	3.4
\$100,000 - \$199,999	68	14.6
\$200,000 - \$349,999	118	25.3
\$350,000 - \$499,999	79	16.9
\$500,000 - \$999,999	126	27.0
\$1,000,000 - \$1,499,999	28	6.0
\$1,500,000 and Over	32	6.9
Total Farms	467	100.0

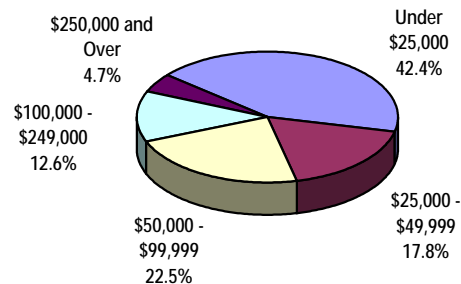
Farm Operating Expenses (10)	# Farms	\$ '000	% Distr.
Farm Interest Expenses	287	2,560	8.9
Custom and Contract Work	197	1,098	3.8
Rent/Leasing of Land and Buildings	166	655	2.3
Rent/Leasing of Mach./Equip./Vehicles	74	259	0.9
Wages and Salaries	161	1,942	6.7
Paid to Family Members	124	1,463	5.1
Paid to all Other Persons	74	479	1.7
All Fuel Expenses	458	3,337	11.6
Repair/Maint. to Mach./Equip./Vehicles	439	2,962	10.3
Fertilizer and Lime Purchases	170	1,936	6.7
Herbicides/Insecticides/Fungicides	155	987	3.4
Seed/Seedling Purchases	260	752	2.6
Livestock and Poultry Purchases	201	4,771	16.6
Veterinary Services, Drugs, etc.	299	504	1.8
Feed and Supplement Purchases	319	1,852	6.4
Electricity/Telephone/Telecom.	428	1,091	3.8
Repair/Maint. to Farm Bldgs./Fences	375	915	3.2
All Other Expenses	443	3,157	11.0
Total Operating Expenses	467	28,780	100.0

Owned and Leased Machinery	Total	Owned Number	Leased
Tractors	1,459	1,447	13
Farm Trucks	1,141	x	x
Pick-ups and Cargo Vans	740	737	3
Other Farm Trucks	401	x	x
Cars/Passenger Vehicles	243	x	x
Combines	292	x	x
Swathers/Mower Conditioners	470	x	x
Balers	368	368	0
Forage Harvesters	49	49	0
Tillage/Cult./Seed./Plant. Equip.	1,406	x	x
		\$ '000	% Alta.
Total Gross Farm Receipts (11)		31,472	0.3
Farms by Gross Farm Receipts		# Farms	% Distr.
Under \$25,000		198	42.4
Under \$10,000		108	23.1
\$10,000 - \$24,999		90	19.3
\$25,000 - \$49,999		83	17.8
\$50,000 - \$99,999		105	22.5
\$100,000 and Over		81	17.3
\$100,000 - \$249,999		59	12.6
\$250,000 - \$499,999		14	3.0
\$500,000 and Over		8	1.7
Total Farms		467	100.0

Average Gross Receipts Per Farm



Distribution of Farms by Class of Gross Farm Receipts



Regional values do not include municipalities where confidentiality applies. x - Confidential
 "% Distr." refers to % of total "% Alta." refers to the municipality as a % of Alberta

"# Farms" refers to number of farms reporting

Source: Statistics Canada, 2001 Census of Agriculture

Refer to Census definitions and notes for more information

Prepared by: Statistics and Data Development Unit, Alberta Agriculture, Food and Rural Development

2001 Agriculture Profile - 3. Crops and Land Management

Grains*	# Farms	Acres	% Alta.
Total Wheat	77	16,655	0.2
Spring Wheat (Excl. Durum) (12)	74	15,980	0.3
Durum Wheat	3	x	x
Winter Wheat (13)	1	x	x
Oats	143	17,341	1.3
Barley	93	15,479	0.3
Mixed Grains	17	2,912	0.7
Corn for Grain	0	0	0.0
Buckwheat	0	0	0.0
Total Rye	6	579	0.5
Fall Rye (13)	6	579	0.6
Spring Rye	0	0	0.0

Oilseeds*	# Farms	Acres	% Alta.
Canola	64	13,620	0.5
Flaxseed	1	x	x
Soybeans	0	0	0.0
Mustard Seed	0	0	0.0
Sunflowers	0	0	0.0
Safflower	0	0	0.0

Other Field Crops* (14)	# Farms	Acres	% Alta.
Potatoes	0	0	0.0
Dry Field Peas	27	x	x
Lentils	1	x	x
Total Dry Field Beans	1	x	x
Dry White Beans	0	0	0.0
Chick Peas	0	0	0.0
Other Dry Beans	1	x	x
Canary Seed	0	0	0.0
Sugar Beets	0	0	0.0
Triticale	2	x	x
Forage Seed for Seed	23	5,925	1.4
All Other Field Crops	2	x	x

Hay and Fodder Crops* (14)	# Farms	Acres	% Alta.
Corn for Silage	2	x	x
Alfalfa and Alfalfa Mixtures	179	40,991	1.0
All Other Tame Hay/Fodder Crops	251	63,763	2.8

Selected Vegetables Grown for Sale (15)	# Farms	Acres	% Alta.
Sweet Corn	0	0	0.0
Tomatoes	0	0	0.0
Cucumbers	0	0	0.0
Green Peas	0	0	0.0
Green or Wax Beans	0	0	0.0
Cabbage	0	0	0.0
Cauliflower	0	0	0.0
Broccoli	0	0	0.0
Carrots	0	0	0.0
Rutabagas and Turnips	0	0	0.0
Beets	0	0	0.0
Radishes	0	0	0.0
Dry Onions	0	0	0.0
Shallots, Green or Seed Onions	0	0	0.0
Lettuces	0	0	0.0
Squash, Pumpkins and Zucchini	0	0	0.0
Total Vegetables	0	0	0.0

Fruit, Berries and Nuts	# Farms	Acres	% Alta.
Grown For Sale (16)			
Producing Area of Fruits/Berries/Nuts	4	16	0.8
Producing Area of Strawberries	1	x	x
Producing Area of Raspberries	1	x	x
Area of Nursery Products	2	x	x
Area of Christmas Trees			
Grown For Sale (17)	4	15	1.2
	# Farms	Dollars	% Alta.
Sales of Forest Products	13	516,716	7.2

Greenhouse Products	# Farms	Sq. Feet	% Alta.
Total Area Under Protection	1	x	x
Area in Use on May 15, 2001	1	x	x
Flowers	1	x	x
Vegetables	1	x	x
Other Greenhouse Products	0	0	0.0

Mushroom Houses	# Farms	Acres	% Alta.
Total Growing Area	0	0	0.0

Land Management	# Farms	Acres	% Alta.
Total Number of Farms	467	453,943	0.9
Use of Irrigation	3	111	0.0
Use of Commercial Fertilizer	137	64,817	0.4
Use of Herbicides (18)	130	52,970	0.3
Use of Insecticides (18)	9	x	x
Use of Fungicides (18)	7	6,635	0.5

Tillage Practices	# Farms	Acres	% Alta.
Area Prepared for Seeding	279	85,295	0.5
Incorporating Most Residue into Soil	224	51,240	0.7
Retaining Most Residue on Surface	58	22,527	0.3
No Tillage Prior to Seeding	31	11,528	0.2

Manure Application (19)	# Farms	Acres	% Alta.
Using a Solid Spreader	68	6,908	0.7
Using an Irrigation System	0	0	0.0
Using a Liquid Spreader (On Surface)	1	x	x
Using a Liquid Spreader (Injected)	0	0	0.0

Forms of Weed Control Use on Summerfallow Land	# Farms	Acres	% Alta.
Total Summerfallow Land	123	19,687	0.6
Chemical Only	23	5,252	0.7
Tillage Only	77	7,622	0.6
Tillage and Chemical Combination	33	6,813	0.6

Farms Reporting Soil Conservation Practices (20)	# Farms	% of Total Farms
Crop Rotation	236	50.5
Permanent Grass Cover	232	49.7
Winter Cover Crops	8	1.7
Contour Cultivation	12	2.6
Strip-Cropping	10	2.1
Grassed Waterways	61	13.1
Windbreaks or Shelterbelts	110	23.6

Regional values do not include municipalities where confidentiality applies. x - Confidential

"# Farms" refers to number of farms reporting "% Alta." refers to the municipality as a % of Alberta

Asterisk (*) refers to seeded acreage

Source: Statistics Canada, 2001 Census of Agriculture

Refer to Census definitions and notes for more information

Prepared by: Statistics and Data Development Unit, Alberta Agriculture, Food and Rural Development

Big Lakes

2001 Agriculture Profile - 4. Livestock, Poultry and Farm Machinery

Cattle and Calves (21)	# Farms	Head	% Alta.
Total Cows	269	20,218	0.9
Dairy Cows	8	93	0.1
Beef Cows	269	20,125	1.0
Heifers	191	5,142	0.4
Bulls	227	897	0.8
Steers	62	1,347	0.1
Calves	263	17,608	0.8
Total Cattle and Calves	282	45,212	0.7

Pigs (22)	# Farms	Head	% Alta.
Boars	13	43	0.5
Sows and Gilts for Breeding	19	267	0.1
Nursing and Weaner Pigs	10	774	0.1
Grower and Finishing Pigs	19	780	0.1
Total Pigs	24	1,864	0.1

Sheep and Lambs	# Farms	Head	% Alta.
Rams	15	28	0.4
Ewes	15	407	0.3
Lambs	13	294	0.2
Total Sheep and Lambs	15	729	0.2

Other Livestock (23)	# Farms	Head	% Alta.
Horses and Ponies	157	1,487	0.9
Goats	14	481	1.1
Rabbits	4	74	1.3
Mink	0	0	0.0
Fox	0	0	0.0
Bison (Buffalo)	10	994	1.2
Deer (Excluding Wild Deer)	2	x	x
Elk	3	x	x
Llamas and Alpacas	7	x	x
Wild Boars	6	783	9.7

Colonies of Bees (24)	# Farms	Colonies	% Alta.
Alberta	467	209,821	100.0
Big Lakes	10	4,100	2.0

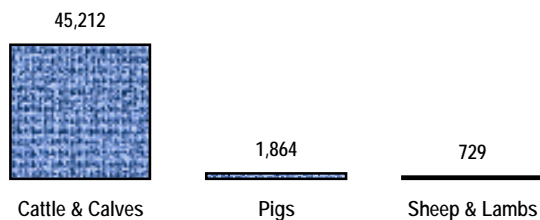
Poultry Inventory	# Farms	Number	% Alta.
Total Hens and Chickens	44	2,665	0.0
Broilers, Roasters, Cornish	21	1,091	0.0
Pullets for Laying (under 19 wks.)	15	522	0.0
Laying Hens (19 wks and over)	39	1,052	0.0
Laying Hens (Hatchery Supply Flock)	0	0	0.0
Turkeys	10	134	0.0
Other Poultry	11	130	0.1

Poultry Production	# Farms	Kilograms	% Alta.
Broilers/Roasters/Cornish Production	3	x	x
Turkey Production	1	x	x

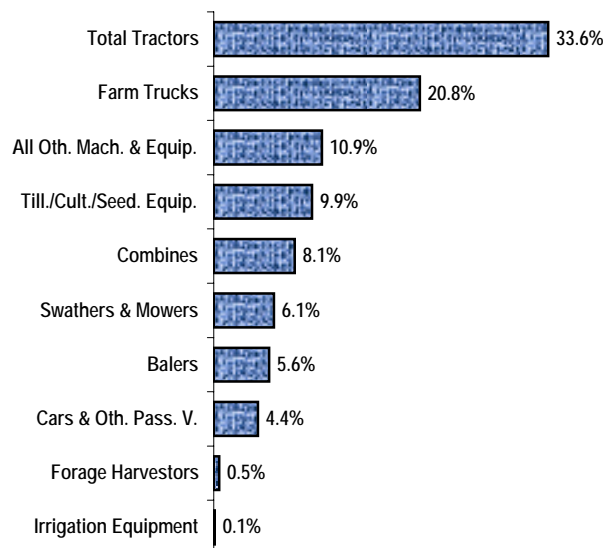
Chicks or Other Poultry Hatched	# Farms	Number	% Alta.
	0	0	0.0

Market Value of Farm Machinery and Equipment (8)	# Farms	Number	\$ '000
Total Tractors	445	1,459	18,912
Total Farm Trucks	438	1,141	11,663
Pick-ups and Cargo Vans	415	740	8,728
Other Farm Trucks	249	401	2,936
Cars and Other Passenger Vehicles	212	243	2,489
Swathers and Mower Conditioners	324	470	3,408
Combines	225	292	4,573
Balers	297	368	3,126
Forage Harvestors	42	49	306
Tillage/Cultivation/Seeding Equip.	347	1,406	5,555
Irrigation Equipment	7	n/a	54
Other*	318	n/a	6,121

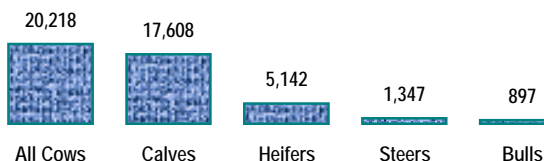
Livestock Inventory, May 15, 2001
(Number of Head)



Per Cent Distribution of Total Market Value of Machinery and Equipment



Cattle Inventory, May 15, 2001
(Number of Head)



Regional values do not include municipalities where confidentiality applies. x - Confidential "# Farms" refers to number of farms reporting

* Other Machinery, Workshop and Office Equipment "% Alta." refers to the municipality as a % of Alberta n/a - not applicable

Source: Statistics Canada, 2001 Census of Agriculture

Refer to Census definitions and notes for more information

Prepared by: Statistics and Data Development Unit, Alberta Agriculture, Food and Rural Development