

2001 Agriculture Profile - 1. Farms and the Land

	Clear Hills	Alberta
Total Population	2,772	2,974,807
Urban Population	0	2,405,160
Rural Population	2,772	569,647
<i>Rural as % of Total Population</i>	100	19
Number of Farms (1)	572	53,652
Average Farm Size (acres)	1,145	970
Average Per Reporting Farm	Dollars	
Net Farm Operating Income (2)	7,582	23,764
Farm Capital	538,513	1,029,903
Farm Operating Expenses	67,701	166,043
Gross Farm Receipts	73,124	184,885
Area in Crops (acres)	595	522
Seeded Area of Wheat (acres)	380	439
Number of Beef Cows (head)	x	74
Number of Pigs (head)	177	757

Farm Operating Arrangements (3)	# Farms	% Distr.
Sole Proprietorship	379	66.3
Partnership	139	24.3
With Written Agreement	21	3.7
Without Written Agreement	118	20.6
Corporation	51	8.9
Family	43	7.5
Non-Family	8	1.4
Other*	3	0.5
Total Farms	572	100.0

Farms by Total Farm Area	# Farms	% Distr.
Under 10 Acres	3	0.5
10 to 129 Acres	12	2.1
130 to 239 Acres	97	17.0
240 to 399 Acres	76	13.3
400 to 559 Acres	58	10.1
560 to 759 Acres	57	10.0
760 to 1,119 Acres	89	15.6
1,120 Acres and Over	180	31.5
1,120 to 1,599 Acres	64	11.2
1,600 to 2,239 Acres	50	8.7
2,240 to 2,879 Acres	20	3.5
2,880 to 3,519 Acres	11	1.9
3,520 Acres and Over	35	6.1
Total Farms	572	100.0

Farms by Type (4)	# Farms	% Distr.
Dairy	2	0.4
Cattle (Beef)	176	33.0
Hog	3	0.6
Poultry and Egg	1	0.2
Wheat	20	3.7
Grain and Oilseed (Except Wheat)	142	26.6
Field Crop (Except Grain and Oilseed)	125	23.4
Fruit	0	0.0
Vegetable	0	0.0
Miscellaneous Speciality	31	5.8
Livestock Combination	13	2.4
Other Combination	21	3.9
Total Farms Classified	534	100.0

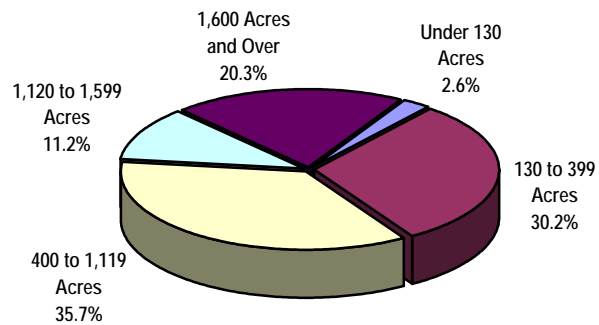
Land Tenure (5)	# Farms	Acres	% Acres
Total Area Owned	557	426,022	65.0
Total Area Rented/Leased/Crop Shared	240	229,161	35.0
Rented/Leased from Government	118	141,293	21.6
Rented/Leased from Others	136	68,476	10.5
Crop Shared from Others	33	19,392	3.0
Total Area of Farms	572	655,183	100.0

Farms by Use of Land	# Farms	Acres	% Acres
Total Land in Crops	540	321,476	49.1
Summerfallow	222	50,291	7.7
Total Pasture Land	...	205,182	31.3
Tame or Seeded Pasture	229	69,798	10.7
Natural Land for Pasture	269	135,384	20.7
All Other Land (6)	434	78,234	11.9
Total Area of Farms	572	655,183	100.0

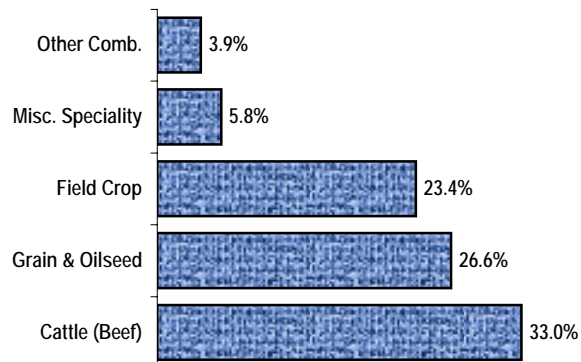
Paid Agricultural Labour (7)	# Farms	# Weeks	% Weeks
Year Round	81	3,844	58.4
Seasonal or Temporary	148	2,735	41.6
Total Paid Labour	209	6,579	100.0

Use of Personal Computers for Farm Management	
Number of Farms Reporting Use	178
% of Total Farms	31.1

Distribution of Farms by Size



Top Five Farm Types



Regional values do not include municipalities where confidentiality applies. x - Confidential "# Farms" refers to number of farms reporting

*Institutions, Community Pastures, etc. "% Distr." refers to % of total ...not available

Source: Statistics Canada, 2001 Census of Agriculture

Refer to Census definitions and notes for more information

Prepared by: Statistics and Data Development Unit, Alberta Agriculture, Food and Rural Development

2001 Agriculture Profile - 2. Financial Characteristics

	Clear Hills No. 21	Alberta
Number of Farms	572	53,652
Average Per Reporting Farm		
	Dollars	
Net Farm Operating Income (2)	7,582	23,764
Farm Capital	538,513	1,029,903
Farm Operating Expenses	67,701	166,043
Farm Interest Expenses	8,192	14,319
Gross Farm Receipts	73,124	184,885

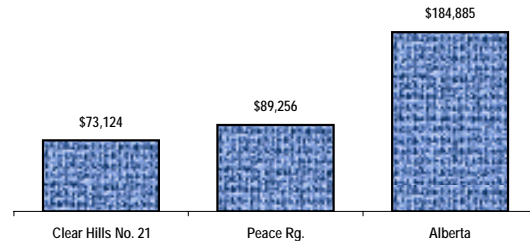
Farm Capital	# Farms	\$ '000	% Distr.
Machinery and Equipment (8)	572	81,018	26.3
Livestock and Poultry	352	41,622	13.5
Land and Buildings (9)	572	185,389	60.2
Owned	559	148,266	48.1
Rented or Leased from Others	241	37,124	12.1
Total Farm Capital	572	308,029	100.0

Farms Classified by Farm Capital	# Farms	% Distr.
Under \$50,000	4	0.7
\$50,000 - \$99,999	25	4.4
\$100,000 - \$199,999	118	20.6
\$200,000 - \$349,999	133	23.3
\$350,000 - \$499,999	93	16.3
\$500,000 - \$999,999	126	22.0
\$1,000,000 - \$1,499,999	40	7.0
\$1,500,000 and Over	33	5.8
Total Farms	572	100.0

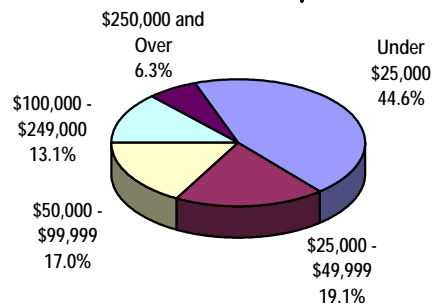
Farm Operating Expenses (10)	# Farms	\$ '000	% Distr.
Farm Interest Expenses	391	3,203	8.3
Custom and Contract Work	299	1,989	5.1
Rent/Leasing of Land and Buildings	172	865	2.2
Rent/Leasing of Mach./Equip./Vehicles	96	331	0.9
Wages and Salaries	209	2,307	6.0
Paid to Family Members	142	1,235	3.2
Paid to all Other Persons	108	1,071	2.8
All Fuel Expenses	556	4,205	10.9
Repair/Maint. to Mach./Equip./Vehicles	538	3,934	10.2
Fertilizer and Lime Purchases	350	4,617	11.9
Herbicides/Insecticides/Fungicides	296	2,512	6.5
Seed/Seedling Purchases	347	1,143	3.0
Livestock and Poultry Purchases	215	5,419	14.0
Veterinary Services, Drugs, etc.	283	440	1.1
Feed and Supplement Purchases	291	1,551	4.0
Electricity/Telephone/Telecom.	538	1,242	3.2
Repair/Maint. to Farm Bldgs./Fences	441	915	2.4
All Other Expenses	551	4,053	10.5
Total Operating Expenses	572	38,725	100.0

Owned and Leased Machinery	Total	Owned Number	Leased
Tractors	1,712	1,697	15
Farm Trucks	1,652	1,639	13
Pick-ups and Cargo Vans	1,043	x	x
Other Farm Trucks	609	x	x
Cars/Passenger Vehicles	288	284	5
Combines	465	461	4
Swathers/Mower Conditioners	585	581	4
Balers	330	x	x
Forage Harvesters	36	36	0
Tillage/Cult./Seed./Plant. Equip.	1,851	1,837	14
		\$ '000	% Alta.
Total Gross Farm Receipts (11)		41,827	0.4
Farms by Gross Farm Receipts		# Farms	% Distr.
Under \$25,000		255	44.6
Under \$10,000		126	22.0
\$10,000 - \$24,999		129	22.6
\$25,000 - \$49,999		109	19.1
\$50,000 - \$99,999		97	17.0
\$100,000 and Over		111	19.4
\$100,000 - \$249,999		75	13.1
\$250,000 - \$499,999		22	3.8
\$500,000 and Over		14	2.4
Total Farms		572	100.0

Average Gross Receipts Per Farm



Distribution of Farms by Class of Gross Farm Receipts



Regional values do not include municipalities where confidentiality applies. x - Confidential
 "% Distr." refers to % of total "% Alta." refers to the municipality as a % of Alberta

"# Farms" refers to number of farms reporting

Source: Statistics Canada, 2001 Census of Agriculture

Refer to Census definitions and notes for more information

Prepared by: Statistics and Data Development Unit, Alberta Agriculture, Food and Rural Development

2001 Agriculture Profile - 3. Crops and Land Management

Grains*	# Farms	Acres	% Alta.
Total Wheat	125	47,475	0.7
Spring Wheat (Excl. Durum) (12)	121	46,257	0.8
Durum Wheat	3	x	x
Winter Wheat (13)	1	x	x
Oats	184	25,028	1.8
Barley	159	34,693	0.7
Mixed Grains	3	x	x
Corn for Grain	0	0	0.0
Buckwheat	0	0	0.0
Total Rye	7	597	0.5
Fall Rye (13)	5	x	x
Spring Rye	2	x	x

Oilseeds*	# Farms	Acres	% Alta.
Canola	141	51,617	1.9
Flaxseed	0	0	0.0
Soybeans	0	0	0.0
Mustard Seed	0	0	0.0
Sunflowers	0	0	0.0
Safflower	0	0	0.0

Other Field Crops* (14)	# Farms	Acres	% Alta.
Potatoes	1	x	x
Dry Field Peas	32	5,891	1.0
Lentils	0	0	0.0
Total Dry Field Beans	0	0	0.0
Dry White Beans	0	0	0.0
Chick Peas	0	0	0.0
Other Dry Beans	0	0	0.0
Canary Seed	0	0	0.0
Sugar Beets	0	0	0.0
Triticale	0	0	0.0
Forage Seed for Seed	136	50,839	12.4
All Other Field Crops	5	380	1.8

Hay and Fodder Crops* (14)	# Farms	Acres	% Alta.
Corn for Silage	0	0	0.0
Alfalfa and Alfalfa Mixtures	203	43,770	1.1
All Other Tame Hay/Fodder Crops	232	60,942	2.7

Selected Vegetables Grown for Sale (15)	# Farms	Acres	% Alta.
Sweet Corn	0	0	0.0
Tomatoes	0	0	0.0
Cucumbers	0	0	0.0
Green Peas	0	0	0.0
Green or Wax Beans	0	0	0.0
Cabbage	0	0	0.0
Cauliflower	0	0	0.0
Broccoli	0	0	0.0
Carrots	0	0	0.0
Rutabagas and Turnips	0	0	0.0
Beets	0	0	0.0
Radishes	0	0	0.0
Dry Onions	0	0	0.0
Shallots, Green or Seed Onions	0	0	0.0
Lettuces	0	0	0.0
Squash, Pumpkins and Zucchini	0	0	0.0
Total Vegetables	1	x	x

Fruit, Berries and Nuts	# Farms	Acres	% Alta.
Grown For Sale (16)			
Producing Area of Fruits/Berries/Nuts	1	x	x
Producing Area of Strawberries	0	0	0.0
Producing Area of Raspberries	0	0	0.0
Area of Nursery Products	1	x	x
Area of Christmas Trees			
Grown For Sale (17)	0	0	0.0

Sales of Forest Products	# Farms	Dollars	% Alta.
	9	x	x

Greenhouse Products	# Farms	Sq. Feet	% Alta.
Total Area Under Protection	2	x	x
Area in Use on May 15, 2001	2	x	x
Flowers	1	x	x
Vegetables	1	x	x
Other Greenhouse Products	0	0	0.0

Mushroom Houses	# Farms	Acres	% Alta.
Total Growing Area	0	0	0.0

Land Management	# Farms	Acres	% Alta.
Total Number of Farms	572	655,183	1.3
Use of Irrigation	0	0	0.0
Use of Commercial Fertilizer	288	190,408	1.2
Use of Herbicides (18)	246	171,525	1.0
Use of Insecticides (18)	23	6,642	0.8
Use of Fungicides (18)	14	8,283	0.6

Tillage Practices	# Farms	Acres	% Alta.
Area Prepared for Seeding	396	195,395	1.1
Incorporating Most Residue into Soil	321	124,232	1.8
Retaining Most Residue on Surface	77	46,210	0.7
No Tillage Prior to Seeding	34	24,953	0.5

Manure Application (19)	# Farms	Acres	% Alta.
Using a Solid Spreader	50	4,161	0.4
Using an Irrigation System	0	0	0.0
Using a Liquid Spreader (On Surface)	1	x	x
Using a Liquid Spreader (Injected)	1	x	x

Forms of Weed Control Use on Summerfallow Land	# Farms	Acres	% Alta.
Total Summerfallow Land	222	50,291	1.6
Chemical Only	34	3,233	0.4
Tillage Only	121	25,653	2.2
Tillage and Chemical Combination	89	21,405	1.9

Farms Reporting Soil Conservation Practices (20)	# Farms	% of Total Farms
Crop Rotation	346	60.5
Permanent Grass Cover	249	43.5
Winter Cover Crops	9	1.6
Contour Cultivation	17	3.0
Strip-Cropping	2	0.3
Grassed Waterways	111	19.4
Windbreaks or Shelterbelts	109	19.1

Regional values do not include municipalities where confidentiality applies. x - Confidential

"# Farms" refers to number of farms reporting "% Alta." refers to the municipality as a % of Alberta

Asterisk (*) refers to seeded acreage

Source: Statistics Canada, 2001 Census of Agriculture

Refer to Census definitions and notes for more information

Prepared by: Statistics and Data Development Unit, Alberta Agriculture, Food and Rural Development

2001 Agriculture Profile - 4. Livestock, Poultry and Farm Machinery

Cattle and Calves (21)	# Farms	Head	% Alta.
Total Cows	247	12,926	0.6
Dairy Cows	10	x	x
Beef Cows	242	x	x
Heifers	181	5,411	0.5
Bulls	199	699	0.6
Steers	70	1,244	0.1
Calves	235	11,313	0.5
Total Cattle and Calves	263	31,593	0.5

Pigs (22)	# Farms	Head	% Alta.
Boars	13	63	0.7
Sows and Gilts for Breeding	16	617	0.3
Nursing and Weaner Pigs	9	1,640	0.2
Grower and Finishing Pigs	16	2,101	0.2
Total Pigs	25	4,421	0.2

Sheep and Lambs	# Farms	Head	% Alta.
Rams	14	26	0.4
Ewes	17	541	0.4
Lambs	14	665	0.4
Total Sheep and Lambs	20	1,232	0.4

Other Livestock (23)	# Farms	Head	% Alta.
Horses and Ponies	179	1,993	1.2
Goats	13	322	0.8
Rabbits	4	68	1.2
Mink	0	0	0.0
Fox	0	0	0.0
Bison (Buffalo)	19	1,907	2.4
Deer (Excluding Wild Deer)	3	x	x
Elk	10	676	2.2
Llamas and Alpacas	7	46	0.4
Wild Boars	4	435	5.4

Colonies of Bees (24)	# Farms	Colonies	% Alta.
Alberta	467	209,821	100.0
Clear Hills No. 21	2	x	x

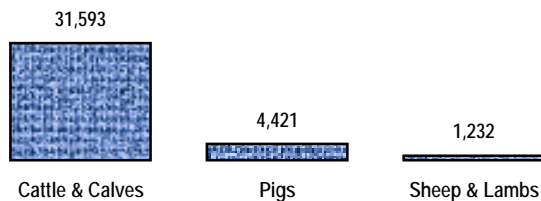
Poultry Inventory	# Farms	Number	% Alta.
Total Hens and Chickens	61	4,608	0.0
Broilers, Roasters, Cornish	23	2,836	0.0
Pullets for Laying (under 19 wks.)	7	x	x
Laying Hens (19 wks and over)	46	x	x
Laying Hens (Hatchery Supply Flock)	0	0	0.0
Turkeys	10	122	0.0
Other Poultry	9	52	0.0

Poultry Production	# Farms	Kilograms	% Alta.
Broilers/Roasters/Cornish Production	6	5,860	0.0
Turkey Production	1	x	x

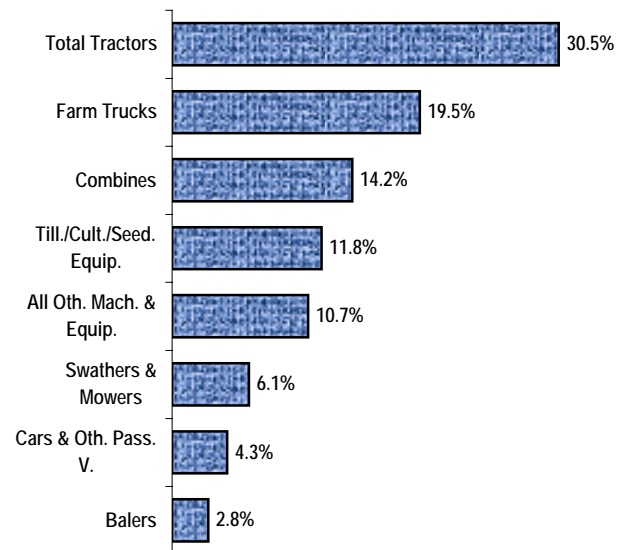
Chicks or Other Poultry Hatched	# Farms	Number	% Alta.
	0	0	0.0

Market Value of Farm Machinery and Equipment (8)	# Farms	Number	\$ '000
Total Tractors	522	1,712	24,633
Total Farm Trucks	537	1,652	15,788
Pick-ups and Cargo Vans	521	1,043	11,282
Other Farm Trucks	343	609	4,506
Cars and Other Passenger Vehicles	243	288	3,505
Swathers and Mower Conditioners	419	585	4,897
Combines	363	465	11,480
Balers	275	330	2,300
Forage Harvestors	33	36	x
Tillage/Cultivation/Seeding Equip.	453	1,851	9,529
Irrigation Equipment	2	n/a	x
Other*	409	n/a	8,658

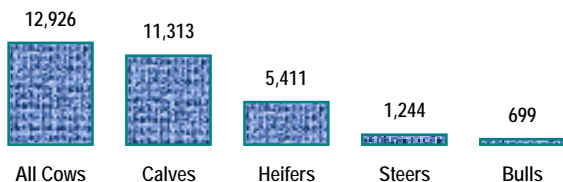
Livestock Inventory, May 15, 2001
(Number of Head)



Per Cent Distribution of Total Market Value of Machinery and Equipment



Cattle Inventory, May 15, 2001
(Number of Head)



Regional values do not include municipalities where confidentiality applies. x - Confidential "# Farms" refers to number of farms reporting

* Other Machinery, Workshop and Office Equipment "% Alta." refers to the municipality as a % of Alberta n/a - not applicable

Source: Statistics Canada, 2001 Census of Agriculture

Refer to Census definitions and notes for more information

Prepared by: Statistics and Data Development Unit, Alberta Agriculture, Food and Rural Development